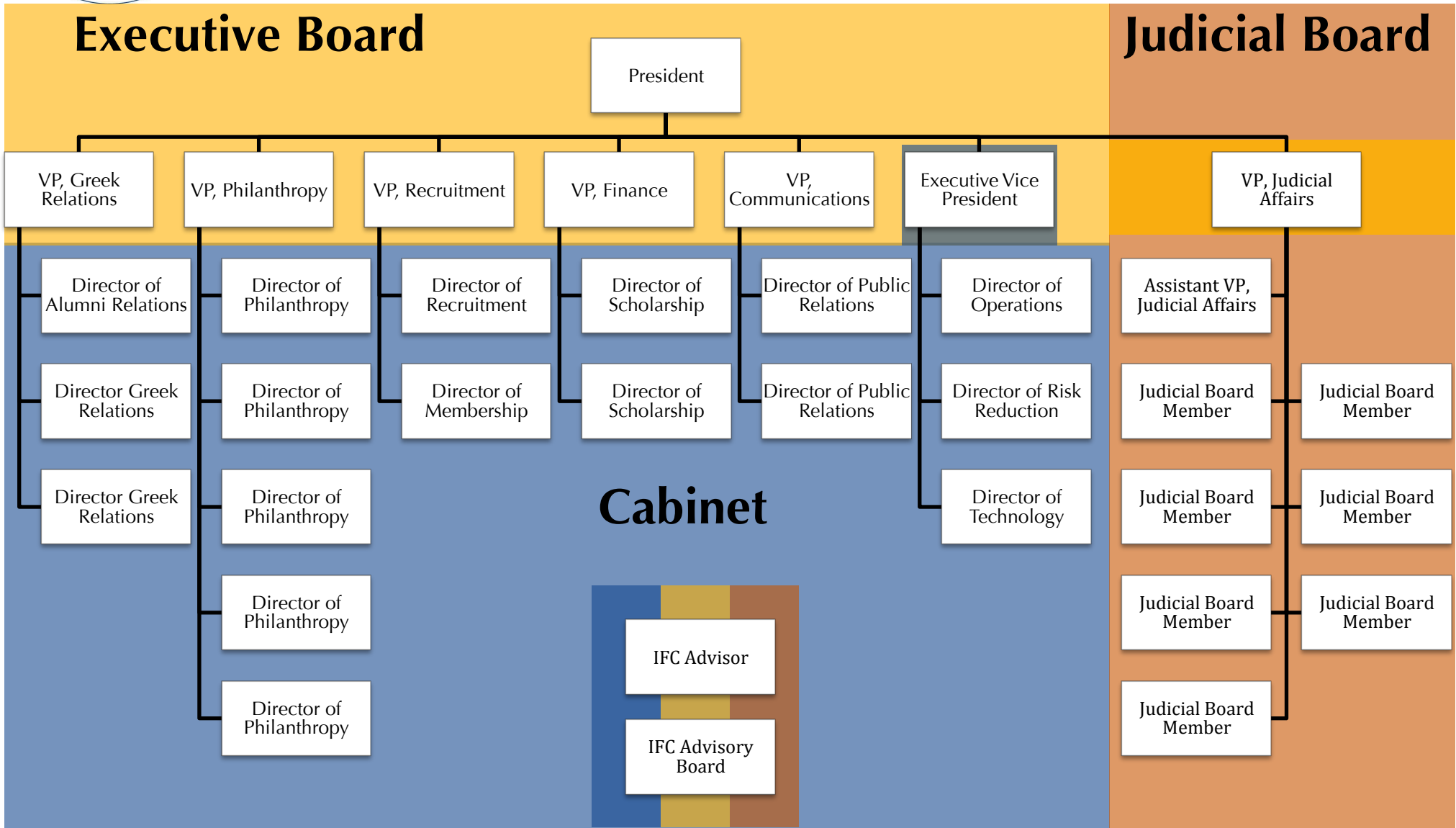




Interfraternity Council (IFC) Structure



The Interfraternity Council operates as three main branches: the Executive Board, the Cabinet, and the Judicial Board. The Executive Board is elected by IFC chapter presidents and delegates every calendar year before Winter Break. The Cabinet and the Judicial Board are appointed and approved by the Executive Board in a selection process at the beginning of every Spring semester.