



St. John's Lutheran Church

The EAGLE CALL

Volume 42, Number 11
November, 2010

Worship

Saturday
5:00 pm

Sunday
7:45 am
8:45 am
11:00 am

Radio Broadcast
KRNT 1350 AM
Sunday Mornings
8:30 am

Pastors

Rachel Thorson Mithelman
Senior Pastor
pastorrachel@stjohnsdsm.org

Robert Speirs
Associate Pastor
pastorbob@stjohnsdsm.org

Ramon Runkel
Visitation Pastor
Runkel1060@msn.com

Website

www.stjohnsdsm.org

God Gives...We Share

In Partnership with the Saints!

As St. John's celebrates its 145th anniversary this year (*don't forget our All Saints/145th Anniversary Festival Worship & Brunch on Nov. 7th!*) we remember, with thanks, the saints who have gone before us. Their love for and commitment to St. John's are stunning examples of faithfulness which we are called to emulate. In fact, we do not need to go very far back in our history to find faithful servants who understood that the financial resources they had were also gifts from God, meant to be shared. In spite of the fact that their earthly lives are over, many of these saints **continue** to support God's mission through St. John's because of plans they made before they died!

As we have faced financial challenges in recent years, St. John's has not had to borrow money from outside entities because of these forward-looking, hope-full saints...

- One friend and brother in Christ arranged for St. John's to receive a third of his estate.
- More than one long-time member remembered St. John's with a gift of \$25,000 or more upon their death in the last year.
- And one member who died last spring made arrangements for her financial offerings to continue – monthly - through 2014!

And this list – of the generosity of the saints – could go on for pages!

On this All Saints 2010, not only do we thank God for the amazing generosity and faithful vision of the saints, we also pray to follow in their footsteps now; for they truly understood that **God gives...and we share!**

WHAT'S INSIDE

| | | | | | |
|---|---|---|---|--------------------------------------|----|
| A Word from Our Pastors | 2 | Midweek Music & Artist of the Month | 5 | Children's & Youth Ministries | 8 |
| WELCA Updates, Stephen Ministry & SHIIP | 3 | Small Groups..... | 6 | Financials & A Call of Concern | 9 |
| Prepare for Worship | 4 | New Members | 7 | Hospitality & Outreach..... | 10 |
| | | | | Photos of the Month | 11 |

St. John's Lutheran Church

In the City for Good!
Phone 515.243.7691

Staff

Larry Christensen

Director of Music,
 Worship and the Arts
 larryc@stjohnsdsm.org

Megan Clausen

Director of Youth Ministry
 meganc@stjohnsdsm.org

Sarah Garner

Organist
 sgarner22@me.com

Jack Huff

Evening / Weekend
 Security / Maintenance

Amber Jackson-Elwer

Nursery Coordinator
 amberbeth22@yahoo.com

John Kelly

Evening / Weekend
 Security / Maintenance

Amanda Kuhlman

Nursery

Scott LaBlanc

Director of Parish Operations
 scottl@stjohnsdsm.org

Kim Lamb

Front Office Manager
 receptionist@stjohnsdsm.org

Laura Lundy

Financial Assistant
 laural@stjohnsdsm.org

Katie Tippins

Hospitality & Outreach
 katieltippins@stjohnsdsm.org

Teresa McKeever

Financial Assistant
 financeoffice@stjohnsdsm.org

Jean McKinney

Parish Nurse
 jeanmckinney@stjohnsdsm.org

Leslie Moeller

Maintenance
 lesmoeller@stjohnsdsm.org

Sheryl Reed

Director of Children's Ministries
 sherylreed@stjohnsdsm.org

Darla Stiles

Christian Involvement
 darlastiles@stjohnsdsm.org

Office Hours are:

Monday – Thursday
 9:00 am – 5:00 p.m.

Friday

9:00 - 4:00 p.m.

Saturday

9:00 am – 12:00 p.m.

Next Eagle Call Deadline
November 15 at 12 p.m.



A Word from Our Pastors
Pastor Robert Speirs

In 2 Corinthians 9, the Apostle Paul is in the process of encouraging the church at Corinth to give to the collection he is gathering for the church and saints in Jerusalem, so as to continue the ministry that has begun there (think stewardship campaign). After challenging them to be generous in their support, and stating that he has “boasted” to others about their generosity, Paul goes on to state in verse 6: “The point is this: The one

who sows sparingly will also reap sparingly, and the one who sows bountifully will also reap bountifully. Each of you must give as you have made up your mind, not reluctantly or under compulsion, for God loves a cheerful giver. And God is able to provide you with every blessing in abundance, so that by always having enough of everything, you may share abundantly in every work. As it is written, ‘he scatters abroad, he gives to the poor; his righteousness endures forever.’

I was reminded of a story that I heard this past summer after our middle school youth came back from their mission trip to Duluth, one day and after working for a long and hot period at a car wash (with the purpose of raising some money for a local senior center), one couple was so impressed and happy about the kids volunteer work and ability to clean cars, that they gave them a \$40 tip and told them to go and buy themselves ice cream for their good work. After a few moments of deliberation regarding the money, the youth made a unanimous decision to add it to the fund-raising monies for the senior center instead. Our High School, Middle School and even elementary-aged youth recently volunteered their time and energies to the Des Moines Hunger Hike, walking five miles in order to raise money and awareness for local hunger programs. Also, a few of our High School-aged youth - along with Megan Clausen, our Youth Minister and many other young people from all across the Des Moines area - spent a night in Drake Stadium for Reggie’s Sleepout to remember and support efforts to end the increasing homeless youth problem. Another one of our young people, who has now entered college, has begun a foundation that will raise monies to support a youth program in Chicago, and also attempt to supply those children who are needful with a simple Christmas present this year.

Where does this willingness to be generous and responsible for the challenges and difficulties of others come from? From home? From school? From church? Where? Could it be that we, as a community of faith, are actually making a difference in the lives and hearts of our youth? It is an amazing possibility that they are hearing loudly and clearly the Gospel of Jesus Christ and acting upon it, the same Jesus Christ who challenges each and every one of us to remember from whom our blessings and abundance come and how our wealth and ample resources can be used. Perhaps our young people understand, as much as we do, Jesus’ preaching on mercy and charity in the Matthew 25 passage where he states: “Come, you that are blessed by my Father, inherit the kingdom prepared for you from the foundation of the world; for I was hungry and you gave me food, I was thirsty and you gave me something to drink, I was a stranger and you welcomed me, I was naked and you gave me clothing, I was sick and you took care of me, I was in prison and you visited me. Then the righteous

Continued on Page 3

Continued from Page 2

will answer 'When was it that we saw you hungry, thirsty, naked, sick or in prison?' And the King will say... 'Truly, I tell you, just as you did it to one of the least of these who are members of my family, you did it to me.' It could be that our future is in much better shape and hands than what some of us may be thinking. Thanks be to God.

WELCA Updates



The collection of school supplies for the Children and Family Urban Ministries weighed in at 50.5 pounds with an estimated value of over \$200. We accumulated 26 pounds of paper and notebooks, 5 pounds of pencils, 6 pounds of crayons and an assortment of other useful new items. They are very appreciated. Thank you for being so very generous.

The November WELCA outreach project will be a collection for the Lutheran Services in Iowa Care Program. The LSI has a number of programs to assist families in Iowa. The most urgent needs are **Similac formula, baby food, rice/oatmeal cereal, pampers, baby wipes, baby shampoo, cabinet safety devices, baby gates, Onesies, t-shirts, 0 to 3-months pajamas, and educational toys for babies up to 5 years.** Please select one or more items and place in the boxes marked LSI near the office reception desk or in the hallway outside Neumann Hall. Your support is really appreciated!

The group meetings of Women of the ELCA will be held on November 4. The "Thank Offering" for the year and LSI needs will be gathered.

Sarah Group will meet at the home of Mary Liechty in Ankeny at 9:30 a.m. Mary will share her experiences as a winter volunteer at a wildlife-rescue preserve in Louisiana. Lois Group will meet in Neumann Hall at 12:30 p.m. Pastor Ramon Runkel will speak on "Thankful Thoughts".

Cookies! Treasures! Coming soon!! Mark your Calendars NOW and start baking...looking for a treasure {or two}! Yes, it's that time again, the traditional ST. Johns Cookie Walk and Treasure Table. Let's make it better than ever! Saturday & Sunday, December 11 & 12. Questions? Janie Clemenson, 274-0924...Lou Johnston, 287-2424.

Stephen Ministry

A Great Way You Can Help a Hurting Friend

Do you have a friend, neighbor, co-worker, or relative who has suffered a loss or is going through a difficult time? Here's a great way you can help--tell them about our Stephen Ministry! Stephen Ministers are members of our congregation who have received special training to provide high-quality, confidential, one-to-one Christian care to hurting people. Stephen Ministers meet weekly with their care receivers to listen, care, encourage, and provide emotional and spiritual support. (Males are matched with males, and females are matched with females.) The caring relationship lasts for as long as the person needs it. It's free, and it's a powerful way you can help a hurting friend.

To learn how to connect someone you know with a Stephen Minister, talk with one of our Stephen Ministry Leaders Pastor Speirs, Linda Rieck or Karen Zaabel. Our Stephen Ministers are here to care.

SHIIP, Medicare & the Bridge



Four downtown Des Moines congregations, including St. John's, are members of The Bridge. The Bridge, in turn, is a sponsor for SHIIP (Senior Health Insurance Information Program), which is funded by the federal government and operates under the Iowa Insurance Department.

Trained SHIIP volunteers help seniors, disabled persons on Medicare, and those about to turn age 65 navigate through the complex world of Medicare. The services provided by SHIIP counselors are free of charge.

Each fall Medicare Prescription Drug (Part D) Plans announce changes to their premiums, co-pays, and the drugs they cover. If you are currently enrolled in a Part D plan, you may be able to save money by choosing a different plan. Changes in existing plans may be made anytime from November 15 through December 31, 2010. During this period you can also enroll in Medicare Prescription Drug coverage, if you haven't done so already. Changes would go into effect on January 1, 2011.

Anyone in the congregation who seeks assistance can call SHIIP directly at 800-351-4664 or call the receptionist at St. John's at 515-243-7691. A volunteer counselor will then contact you to assist you with making appropriate Medicare decisions.

Prepare for Worship

Sunday, November 7th, "All Saints Sunday" and 145th Anniversary Celebration

In holy baptism, God makes saints out of sinners. In holy communion, God forgives the sins of all the saints. In the assembly today, we give thanks for all the saints "who from their labors rest," who have fought the good fight, who have gained the crown. In the same breath, we petition our God for the strength to hear and to heed the admonitions of the Lord Jesus in today's gospel to love and serve even our enemies.

The readings are Daniel 7:1-3, 15-18; Psalm 149; Ephesians 1:11-23; and Luke 6:20-31.

The hymns are ELW 422, "For All the Saints," ELW 449, "We Know That Christ is Raised and Dies No More," and ELW 826, "Thine the Amen, Thine the Praise."

Music for this Festival Sunday will include full orchestra with organ on the hymns. The choir from Temple B'Nai Jeshurun on Grand Avenue will join our choir on Brahms' beautiful chorus from his Requiem, "How Lovely Is Thy Dwelling Place," at 8:45 a.m. and 11:00 a.m. Des Moines Symphony string players who are members at the Temple will join our Chamber Orchestra for this very special musical offering. At 8:45 a.m. Erik Horak-Hult will sing and accompany himself on "Litanei," by Franz Schubert.

The focus on our forebears in the faith will take on added sweetness as we celebrate the 145th anniversary of the founding of St. John's in 1865. Since our 150th birthday is just five years off, this observance helps us get a head start on that momentous milestone!

Sunday, November 14th, Time after Pentecost – Lectionary 33 with Healing

The end is near. There is no doubt about it. The warnings are dire. The tone of today's texts is ominous. But the baptized know how to live in the "meantimes." The baptized are strengthened for the living of these days in word and sacrament. We rally round the invitation of the apostle: "Brothers and sisters, do not be weary of doing what is right."

The readings are Malachi 4:1-2a; Psalm 98; 2 Thessalonians 3:6-13; and Luke 21:5-19.

The hymns are ELW 657, "Rise, O Sun of Righteousness," ELW 711, "O Day of Peace," and ELW 327, "Through the Night of Doubt and Sorrow." At the 8:45 a.m. service

Cathedral Choir, Cantorei, soloists and St. John's Orchestra will present the cantata, "Good Christian Friends with Joy Draw Near," by Dietrich Buxtehude. The rite of laying on of hands and anointing with oil for healing will be part of each liturgy this weekend.

Friday, November 19, 6:00 p.m., Sabbath service at Temple B'Nai Jeshurun on Grand Avenue. Our Cathedral Choir, Cantorei, and Chamber Orchestra will join the Temple Choir and Strings for Brahms' "How Lovely Is Thy Dwelling Place" and "We Came to Sing in Jerusalem," by David Burger.

Sunday, November 21, Christ the King

Jeremiah's promise of the execution of "justice and righteousness in the land" finds ironic fulfillment in the execution of Jesus of Nazareth, the King of the Jews. It appears so utterly contradictory that the king should be crucified with the criminal. This victory appears for all the world as ignominious defeat. Yet, through the gate of death, our Lord opens the door to paradise.

The readings for this last Sunday of the Church Year are Jeremiah 23:1-6; Psalm 46; Colossians 1:11-20; and Luke 23:33-43. The hymns are ELW 634, "All Hail the Power of Jesus' Name!" ELW 727, "Lord Christ, When First You Came to Earth," and ELW 864, "Praise, My Soul, the God of Heaven." At 8:45 a.m. the Kisasa Choristers will sing "We Will Sing for Joy," by Domenico Scarlatti, arr. by H. Lowe for offering, and for communion Kisasa and friends will be joined by the St. John's Brass Quartet for "At the Name of Jesus" in a setting by Michael Burkhardt. At 11:00 a.m. Cathedral Choir will sing "Let All the World in Every Corner Sing," by Richard Proulx, for offering and will repeat "At the Name of Jesus" during communion.

Thursday, November 24, National Day of Thanksgiving, 10:00 a.m. service

Every gathering for worship has elements of thanksgiving. When we are nourished with God's bounty in holy communion, when we partake of Jesus' word that gives life to the world, and even when two or three of us simply join our hearts in prayer to make our requests known to God, we do so "with thanksgiving." Let us give thanks to the Lord, who is good and whose mercy endures forever.

Continued on Page 5

Continued from Page 4

The readings will be Deuteronomy 26:1-11; Psalm 100; Philippians 4:4-9; and John 6:25-35. We will use Marty Haugen's "Now the Feast" as the sung setting of the liturgy, and the hymns will be ELW 880, "O God, Beyond All Praising," ELW 879, "For the Beauty of the Earth," and ELW 840, "Now Thank We All Our God." The gospel canticle will be "All You Works of God," by Marty Haugen, and the Offertory will be stanza 1 of ELW 695, "As Saints of Old Their First Fruits Brought." Members of various choirs will combine for offering music.

Sunday, November 28, First Sunday of Advent

The new church year begins with a wake-up call: Christ is coming soon! In this day's readings, both Paul and Jesus challenge us to wake from sleep, for we know neither the day nor hour of the Lord's coming. Isaiah proclaims the day when God will gather all people on the holy mountain and there will be no more war or suffering. Though we vigilantly watch for the promised day of salvation, we wait for what we already have: Christ comes among us this day as the word and meal that strengthens our faith in the promises of God.

The readings are Isaiah 2:1-5; Psalm 122; Romans 13:11-14; and Matthew 24:36-44.

The processional canticle, which we will use throughout Advent, will be Donald Pearson's "An Advent Processional." (The refrain will also serve as the gospel verse.)

For the hymn of the day the choir tenors will sing "Wake, Awake, for Night is Flying" from Bach's cantata "Wachet auf." The offertory will be ELW 250, "Blessed Be the God of Israel," stanza 1, and the sending song will be ELW 244, "Rejoice, Rejoice, Believers."

The music at 8:45 a.m. and 11:00 a.m. will be the same with Cantorei and Cathedral Choir respectively. The offering will be "Prayer for Peace," by David Cherwien, and during communion the choirs will lead the congregation in ELW 706, "The People Walk" (Un pueblo que camina) and ELW 262, the Taize chant, "Wait for the Lord."

Did you know?

St. John's now offers Wi-Fi internet access from Weertz to DDI. Just look for the STJOHNS wireless network and use 'inthecity' for the passcode.

Midweek Music



The free noontime concerts run from 12:05 to 12:30 p.m. They are followed by a full lunch in Weertz Hall for only \$6. Make the middle of the week even more special and something to look forward to!

- **November 3** - Sue Odem, oboe, and Patrice Ewoldt, piano
- **November 10** - Central College Chamber Singers, Mark Babcock, conductor
- **November 17** - Sarah Plum, Drake University faculty member, violinist
- **November 24** - Kimberly Roberts, Simpson College faculty member, soprano

Artist of the Month



Awe-Inspiring Compositions of the Heavens

November Artist of the Month is Jerry Pottorff, a self-taught Des Moines artist, who began painting and drawing as a young child and has continued his passion for creating cutting edge art throughout his life. His work today is very distinctive, combining his artist talents and life-long fascination with astronomy to paint the eternal beauty and awe-inspiring compositions of the heavens. Don't miss it as it hangs on the walls of Weertz Fellowship Hall during the month of November.

Small Groups

Questions? Contact Darla Stiles, Small Groups Coordinator
243.7691 or darlastiles@stjohnsdsm.org

CALENDAR

Quilting, Tuesdays, 9:30 a.m. in Room 308.

Saturday a.m. Bible Study, Saturdays in November, 8:30 a.m. Check with Ellen Fisher, 250-9916, ellenfisher123@yahoo.com, or Rod Snavely, rsnavely@aol.com, for location.

3D, Wednesday, November 3, 10:00 a.m.

St. John's Moms, Saturday, November 13, 10:00 a.m. in the Nursery at church.

WIRED Retreat, Saturday, November 13, 8:30 a.m. to 3:00 p.m. at Park Fleur Conference Room.

Hardanger, Mondays, November 8 and 22, 9:00 a.m. in Neumann.

St. John's Job Networking Group, Monday, November 8, 5:30 p.m., Gateway Market on MLKing. Contact Ellen Fisher if questions, 274-5236 or Ellenfisher123@yahoo.com.

Lunch Bunch II, Wednesday, November 17, 12:30 p.m.

Lunch Bunch I, Thursday, November 18, 11:30 a.m.

Photography, Sunday, November 28, 10:00 a.m. in Neumann.

Recreational Reading, Wednesday, November 17, 4:30 p.m. in Rose Holm.

WIRED (Women Interested in Renewal, Education and Discovery) Watch bulletins for details on upcoming WIRED small groups.

Be sure to check www.stjohnsdsm.org for small group dates and events.

More information on upcoming events

Quilting Group will meet on Tuesdays at 9:30 a.m. in Room 308 at church.

Saturday a.m. Bible Study will meet Saturdays in November (except November 27 after Thanksgiving), 8:30 a.m. at a location to be determined by the group. Contact Ellen Fisher, 250-9916 or ellenfisher123@yahoo.com, or Rod Snavely, rsnavely@aol.com, for location.

On Saturday, November 13, **St. John's Moms** will welcome a guest to the group. Melissa Wardell is a certified sign-language instructor with My Smart Hands in Des Moines. Melissa will be introducing sign language through music and stories to moms and children

with a free program. This meeting will be at St John's in the Fireside Lounge. All moms of children 3 years and younger are welcome to join the class and the group! St John's Moms meets the second Saturday of each month and provides a nurturing environment for children to play together and support for new moms and mothers of toddlers. For more information, please contact Rachel Corron at rpcorron@gamil.com, 313-6645, or Kirsten LaBlanc at k.lablanc@gmail.com, 491-0907.

Hardanger Group will meet Mondays, November 8 and 22, at 9:00 a.m. in Neumann. If you are interested in joining the group or have questions about it, contact Arlene Field, 964-3363.

St. John's Job Networking Group is open to members who are job-seeking or who just enjoy job-networking and getting to know other people! St. John's Job Networking Group meets the second Monday of each month at 5:30 p.m. at Gateway Market at the corner of Woodland and Fleur. Contact Ellen Fisher (ellenfisher123@yahoo.com or 515-250-9916) with questions. The next meeting is **Monday, November 8**.

Lunch Bunch II will meet on Wednesday, November 17, at 12:30 a.m. If interested in joining this group, contact Janet Figg, 279-6326.

Lunch Bunch I will meet on Thursday, November 18, at 11:30 a.m. Anyone interested in joining the group should call Margaret Roby at 288-6304 to reserve a space. New members are most welcome!

Photography will meet on Sunday, November 28, 10:00 a.m., to install the Artist of the Month pictures in Weertz.

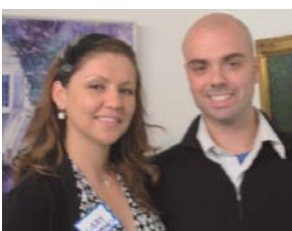
Recreational Reading will meet on Wednesday, November 17, at 4:30 p.m. in Rose Holm.

"WIRED"—Women Interested in Renewal, Education and Discovery, has scheduled a day retreat for Saturday, November 13, 8:30 a.m. to 3:00 p.m. at the Park Fleur conference room. Cost: \$30. Contact Sue Tew or Diane Glass for details.

New Members

Please welcome these new members to our St. John's family who joined our congregation on October 3. Pictures are printed below and they took the time to complete a questionnaire to introduce themselves to you. We encourage you to also take time to introduce yourselves to them! On a very positive note, three of the couples will be having their babies baptized here in the coming weeks – what a wonderful forecast for the future of our St. John's family!

John & Shelby Boyd have one son, John, age 4-months. Shelby works at the *Des Moines Register* as promotions coordinator. John is employed by Weitz Construction, Co. Shelby and John are golfers, enjoy traveling and spending time with friends and family. Additionally, Shelby is a Hawkeye football fan, likes movies, and shopping trips to Chicago. John enjoys horse-racing at Prairie Meadows. Other family tidbits: John was Shelby's high school sweetheart, Christmas is Shelby's favorite holiday and each year she drags (her word) John to the tree farm. John is a huge Cubs fan (and we all know how difficult that can be!). The Boyds live in Des Moines and were attracted to St. John's by friendly people, traditional services, beautiful sanctuary and the lovely location.



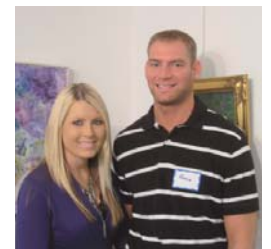
Joe & Libby Crimmings are the proud parents of Jackson, age 1. Joe is a self-employed photographer. Libby is the Regional Field Director (7 states in the Midwest) for the ONE campaign—an advocacy organization to fight extreme poverty and preventable disease in the poorest parts of the world. Joe's interests include art, running and travel. Libby loves art, sports, music, food, movies, traveling, friends and family time. She is also interested in animals, being outdoors – especially on a lake, painting and creating of any kind. Items Libby and Joe would like to share: Libby loves art and to especially painting murals. She also enjoys kids and works with children at Blank Children's Hospital. Joe is a cancer survivor and offers his services for anyone who needs support. He is also a Packer Backer (those of you who know, don't need an explanation; those of you who don't know, no explanation will suffice!), and is a Wisconsin native. They reside in Des Moines. Joe was attracted by the open, friendly environment here at St. John's. Libby always felt a connection to St. John's and has loved coming to St. John's for holiday services.

Matthew McIver & Julie Betts are married and make their home in Des Moines. Matt is the Artistic Director, and Julie is the Managing Director of the Des Moines Social Club. They have one daughter, Vaughn. Matt is into theater arts, education and reading. Julie loves dance, music crafts reading and singing. Matt is the son of the Music Director and organist and Choral Choir Director of First Lutheran Church in Greensboro, N.C. Julie and Matt were attracted to St. John's for community involvement and also great (and they enumerated!) services, music, sermons, pastors and people. We are also conveniently located!



Elaine Oldes transferred to St. John's from Capitol Lutheran. She currently lives in Ankeny and works for Food Service in the Des Moines Public Schools. Elaine enjoys cooking, baking and reading. She also likes tending her in-door plants, and especially enjoys being with her son and daughter-in-law. Elaine chose St. John's because she has friends here. She decided to join activities and signed up for several ministry groups with the Tell cards!

Reece Viet & Kristie Seibert reside in Urbandale and are engaged to be married at St. John's in May 2011. Reece is an accountant and Kristie is a registered nurse in a cardiac pulmonary unit at Mercy. Kristie's interests include singing and music, reading, helping animals, horse-back riding traveling, cooking, spending time with family and friends and helping people. Reece also enjoys time with family and friends, in addition to sports and outdoor activities. Reece is from a small town in North Central Iowa and previously attended a Reformed church. Kristie is from Story City. Kristie and Reece were attracted to the traditional services and the welcoming atmosphere. They were looking for a church to call home and St. John's suites them.



Children's Ministries

November Sunday School Schedule

November 7

Age 3 - Grade 3: The Red Sea (Exodus 14: 1-30)

Talk about these questions at home:

- What do you think life was like for the Israelites when they were slaves in Egypt?
- Talk about the term deliverance. What does it mean that God delivered the slaves out of Egypt?
- When has God helped you through a hard time?

4th, 5th, and 6th Grade: In honor of All Saints Sunday, Jean LemMon will lead a tour and explanation of our first saints. Most of Christ's disciples were martyred and all were sainted. Shields containing the symbols of those first saints are on the reredos in our chancel. The older Sunday School classes will be familiarized with the disciples. They will learn what saints are and how the disciples (and all of us) become saints by loving and following Christ.

November 14

Age 3 - Kindergarten: The Ten Commandments (Exodus 20: 1-17). Advent Program Rehearsal for part of Sunday School session will be in Room 7.

Talk about these questions at home:

- What are some rules you and your family have at home?
- How can rules help us serve and love God?
- Can you think of other rules in the Bible besides the Ten Commandments?

First - Sixth Grade: - Meet in Room 208 for Advent Program Rehearsal.

November 21

Age 3 - Kindergarten: The Battle of Jericho (Joshua 6: 1-20). Advent program rehearsal for part of Sunday School session will be in Room 7.

Talk about these questions at home:

- What things do you depend on God for?
- Why is it important to obey God, even when God's instructions don't make sense?
- What do you think the Israelites depended on God for?

First - Sixth Grade: - Meet in Room 208 for Advent Program Rehearsal.

November 28

Age 3 - Kindergarten: - Meet in Room 7 for Advent Program Rehearsal.

First - Sixth Grade: - Meet in Room 208 for Advent Program Rehearsal.

Youth Ministries

Thank you to all who participated in or donated money toward the Hunger Walk on October 10 and Reggie's Sleepout on October 16. Be sure to find young participants and ask him or her about the experiences they had.

November is kind of a quiet month for youth ministry at St. John's. No HUGE events planned. We will be preparing for Advent, and we will also be getting things ready to participate in Blank Children's Hospital's Festival of Trees and Lights. This is a new thing for us. Be sure to check how you can help us with this endeavor (see below)!

FESTIVAL OF TREES AND LIGHTS: Ways YOU can Help!

1) Check out the tree that the youth of St. John's will be decorating! You can also vote for it as your favorite! ☺

November 24 - 28, 2010

Polk County Convention Complex
501 Grand Avenue, Downtown Des Moines

Hours

- Wednesday: 11:00 a.m. to 7:00 p.m.
- Thursday, Thanksgiving Day: 1:00 to 7:00 p.m.
- Friday: 11:00 a.m. to 8:00 p.m.
- Saturday: 11:00 a.m. to 7:00 p.m.
- Sunday: 11:00 a.m. to 5:00 p.m.

Tickets

Tickets purchased at event: \$5.

Children 2 and younger, FREE

2) Help make decorations!

Contact Megan Clausen (meganc@stjohnsdsm.org) if you would like to be involved with making decorations.

3.) DONATE!

You can donate money or gift cards towards the supplies we have to purchase for decorating the tree! Gift Cards to Hobby Lobby, Michael's, or JoAnn's would be greatly appreciated! The tree has to look "expensive" and professionally decorated. It will, but we will need some financial support!

CONTACT MEGAN WITH ANY QUESTIONS OR TO DONATE TO THE CAUSE. (meganc@stjohnsdsm.org or 515.243.7691)

Financials

A statement of our financial position can now be obtained in the weekly bulletin or by contacting the Church Office.

NOTICE: All who give stock or other types of investments to St. John's, please be advised that St. John's has moved its investment portfolio from Citigroup Global Markets, Inc/Smith Barney to Ameritrade. When gifting please use the following information to make transfers to Ameritrade: **Ameritrade's DTC number is: 0188. Ameritrade's account number is: 788-285389. The name on the Ameritrade account is: St. Johns Lutheran Church.** Those making a contribution of stocks or other equities, please notify the finance office at financeoffice@stjohnsdsms.org or call 515-243-7691. New rules, post 9/11, do not allow brokers to identify donors without prior approval from the donor.

Thank you for your generous and continued support of the ministries of St. John's Lutheran Church.

So Long and Thanks for the Shade



One of the final renovation projects scheduled for this year, the tree in the courtyard was carefully removed this October.

A Call of Concern

You're attending services here at St. John's. You join the community for coffee and doughnuts. And, somewhere along the way, you realize there are some people you haven't seen in a while. Of course, travel or illness can cause a missed week here or there, but you become conscious of the fact you haven't seen them in several weeks.

It happens. And, until now, we didn't have a response for those circumstances, but with your help we'd like to rectify that situation.

We are looking for volunteers willing to make a friendly call to follow up with folks who have been missed at church. This isn't Big Brother watching. This is a call of concern to a member of our family. In fact, a couple of people have been trying out the call system, and their calls have been gratefully received. The recipients were glad someone had noticed and cared enough to call.

In a congregation as large as St. John's, with multiple services each week, it is difficult to keep track of people. We have worship cards, and they are recorded each week, but we also know that some people don't turn them in. For a variety of reasons, sometimes absences go unnoticed. Volunteers will be asked to call every 4-6 weeks. We will offer training and, in a sense, script what you need to say and offer suggestions if you learn of a member who needs help.

This is a very real opportunity for service to your neighbors. You can do it from the comfort of your own home. If interested, please call Katie Tippins at 243-7691, ext. 115. Thank you for considering this opportunity for ministry.

Send us your photos

Do you have photos from a St. John's event or group activity? Do you have a photo that says "St. John's"?

If so, send it to scottl@stjohnsdsms.org or drop it off at the church office. You never know, you may end up in the next issue of the Eagle Call.

Hospitality & Outreach



Social Ministry at St. John's...Part Deux!

When we left off in last month's *Eagle Call* we were exploring the various options for service within Social Ministry here at

St. John's. We described opportunities at Central Iowa Shelter and Services, the Interfaith Hospitality Network, and Homeless Youth Outreach.

Let's pick up our thread this month with the **Connection Café**...The four downtown churches established this free lunch program, available Monday through Saturday (with the exception of Thursday), at the Community Center at Seventh and Grand. Along with the aid of outreach groups, approximately 200 lunches are supplied from noon to 1:00 p.m. Volunteers provide ingredients, help put the lunches together and serve. In addition, any and all tax-deductible monetary donations are greatly appreciated.

The **Angel Tree Project** is an opportunity to provide Christmas gifts for families in need. After Thanksgiving, a Christmas tree will be put up with tags describing the needed gifts. Additionally, mittens and hats for children and adults in our area are needed for the **Mitten and Hat Tree Project**. These items are distributed to a number of agencies and local schools. Both of these projects are easy ways to help fulfill needs within our community.

ELCA **World Hunger Appeal** is a comprehensive and sustainable program using multiple strategies—relief, development, education and advocacy—to address the root causes of hunger and poverty, and responds to neighbors around the corner and around the world. Monetary gifts to the **World Hunger Appeal** help feed, clothe, educate and provide health care for global sisters and brothers. St. John's is proud to be a partner in this worldwide ministry. More information is available at <http://www.elca.org/Our-Faith-In-Action/Responding-to-the-World/ELCA-World-Hunger.aspx>.

St. John's is a member of **AMOS (A Mid-Iowa Organizing Strategy)**, which is a broad-based, nonpartisan, interfaith community organization comprised of over 25 diverse religious congregations in central Iowa. AMOS works for justice and environmental issues, health care, youth, and immigration. I'm sure you've noticed items in our announcements and inserts in our bulletins regarding AMOS initiatives. St. John's has numerous dedicated members committed to the good causes of AMOS. For


information on the organization, check out the website at <http://www.amosiowa.org/>

Fields of Hope is a Foods Resource Bank growing project. It is a community effort by farmers, churches, agribusinesses, etc., to help people feed themselves long-term. With the annual use of donated land, labor and inputs, the crops are harvested and monetized. The cash is used to fund overseas food-security programs. In fact, the harvest of this land was just completed in mid-October. Hopefully, you saw the notices about Fields in the announcements or on the website in recent weeks. It is a wonderful way to make real for children and "citized" adults the actual process of food production.

Additional chances to help include financial and in-kind gifts for local homeless shelters; the Family Violence Center and our own Good Samaritan Fund. You may also participate in Habitat for Humanity projects; tutoring children from the Homes of Oakridge; Collection of food for the DMARC (Des Moines Area Religious Council) Food Pantry; and Serenity Seekers, a support group for women from the Family Violence Center.

Last month's information, as well as the above, is an effort to call attention to activities that go on day in and day out at St. John's. It seems we need to shine a periodic spotlight on them so newcomers can learn and long-term members can remember the myriad of ways to bring Christ to others. And, as you can see, your involvement can be from a financial distance or direct person-to-person contact. Something for everyone and both options necessary for the success of these outreach efforts.

If you are interested in learning how your gifts and passions can assist the ministries here at St. John's, please contact Katie, Hospitality and Outreach Coordinator, at 243-7691 x 115 or katiet@stjohnsdsm.org.



Would you like to receive an electronic version of the Eagle Call?

E-mail businessoffice@stjohnsdsm.org and request the eEagle Call. Help us save on the cost of postage, use less paper, and see each issue in **FULL COLOR**.

Photos of the Month

Special Communion Service Fall 2010



Jester Park 2010



November 2010
Volume 42, No. 11 · Periodical

In the City (and the World) For Good!

As a center for mission in the heart of Des Moines, we are called to provide for our brothers and sisters who are hungry...

- **St. John's serves supper at Central Iowa Shelter & Services on the 18th & 19th of every month. New participants in this effort are always welcome! Check the sign-up sheets in the narthex to see how you may contribute.**
- **A few volunteers are needed to transport our DMARC Food Shelf donations to the food shelf once per month. Contact Katie in the church office if you sense a call to this task.**
- **And due to the fact that some veteran serving groups have taken a break from their commitment to the Connection Café, St. John's has offered to provide lunch on two additional dates – November 3rd (Wednesday) and December 31st (Friday). If you are willing to gather a group to donate, prepare, and serve on those dates, please contact Pastor Mithelman as soon as possible!**

DECEMBER EAGLE CALL DEADLINE

The deadline for all Eagle Call information is **Monday, November 15, 2010**. Please send information or articles in digital format if possible, to Scott LaBlanc, scottl@stjohnsdsm.org. If you cannot send it by e-mail, drop it off at the church office.
Thank you!