
FLAT ART

FLAT ART

15 JANUARY-20 FEBRUARY 2015

*"Sculpture is what you bump into when you
back up to see a painting"*

Barnett Newman

William Benington Gallery is pleased to begin our 2015 program of exhibitions with Flat Art. For this group show we have invited four contemporary sculptors to explore the concerns of their personal practices while limiting them to use only the walls of the gallery to display their work. By being restricted to territory usually reserved for paintings and photography – or flat art – the artists are confronting both their own and the viewers' perceptions of sculpture's position within the gallery or home.





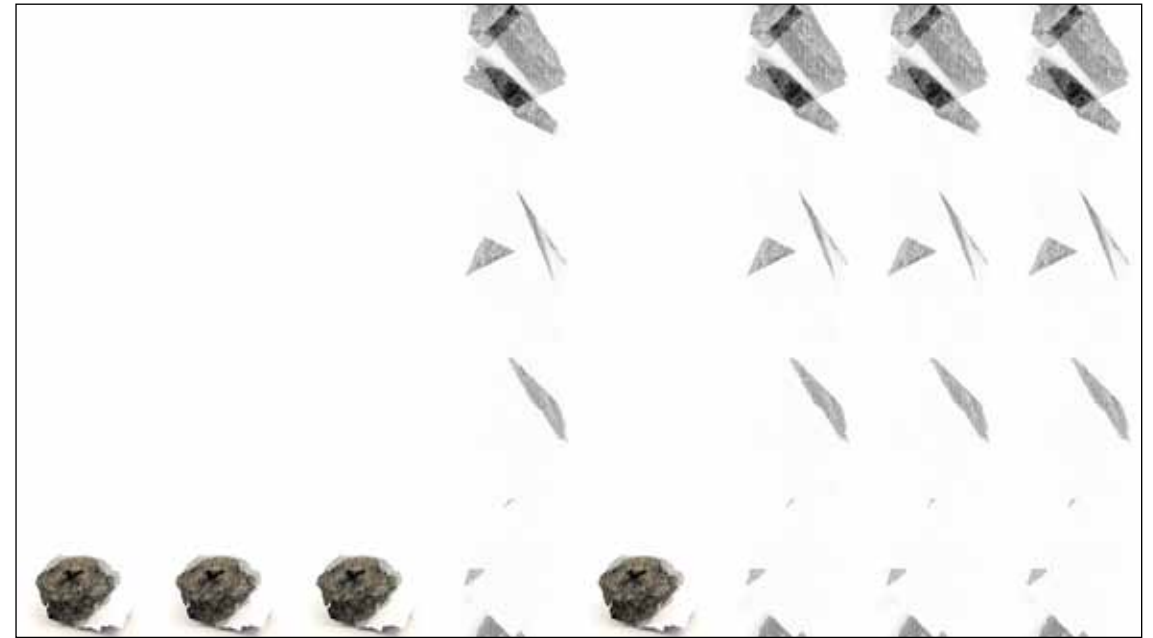


Mark Davey
Changing Room, 2015
43 x 25cm
Black glass, chromed steel
£1,000





Mark Davey
Trust, 2015
43 x 37cm
Gold plated steel
£800 edition of 3



James Irwin
Silicone Binary Progression
(ii), 2014
4min15sec
Single channel HD video
£1,500

george@williambenington.co.uk
020 3659 5818
www.williambeningtongallery.co.uk
20 Arlington Way, London, EC1R 1UY



James Irwin
Silicone Shuffle (unmask), 2014
38 x 26cm
C-Type print, framed
£450



James Irwin
Silicone Shuffle (mask), 2014
38 x 26cm
C-Type print, framed
£450







Amy Stephens
Industrial Symphony, 2015
Dimensions variable
Framed photograph, acrylic,
wood, enamel, lighting gel
£1,200





Amy Stephens
Pause, 2015
30 x 21cm
Framed Collage
£700





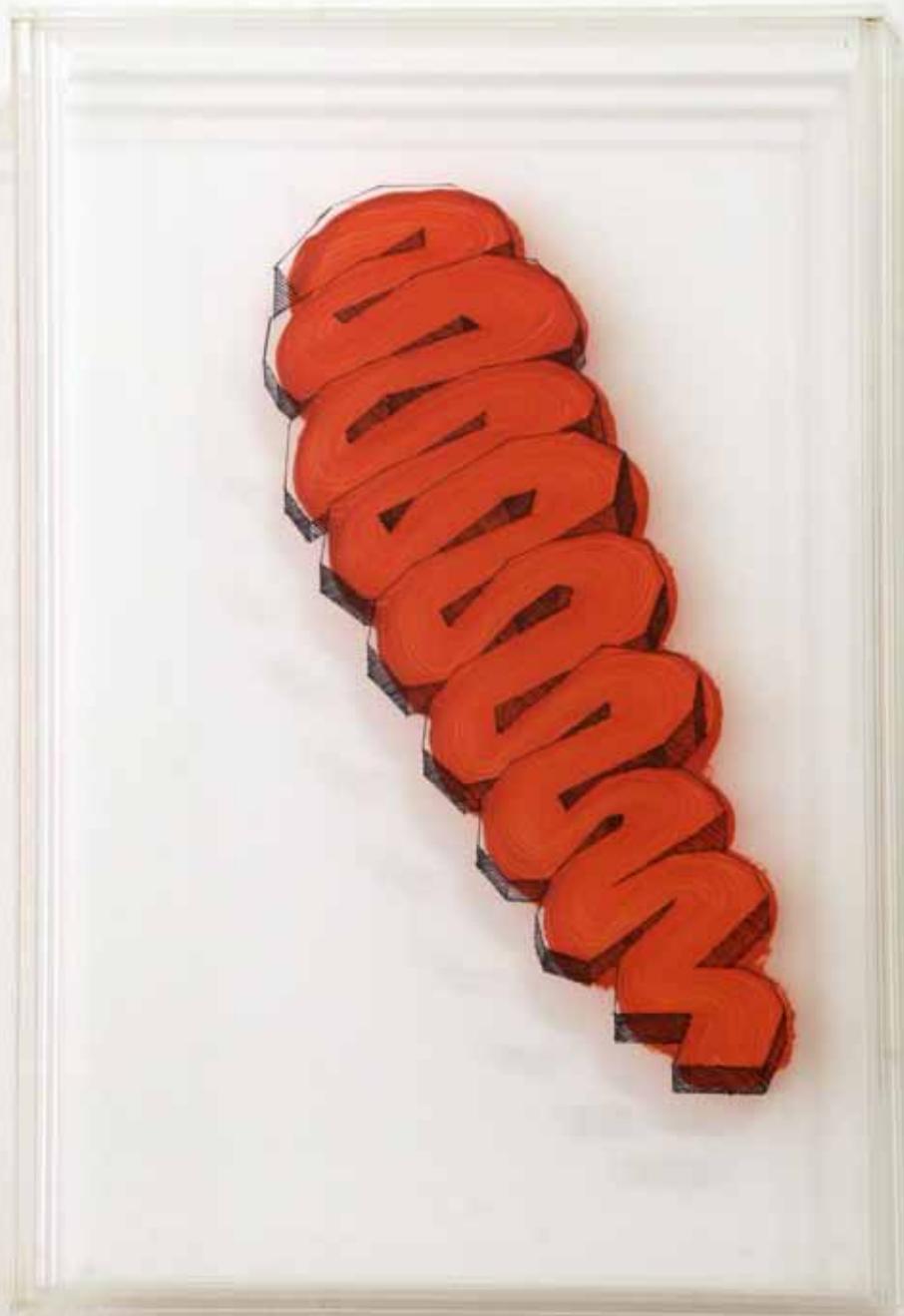
Amy Stephens
The First Dive, 2013
42 x 130 x 10cm
Steel, paint, heat transfer foil
£1,300







Julian Wild
Ripple Painting I, 2010-2015
45 x 35cm
Oil paint, Perspex
£1,000



Julian Wild
Ripple Painting II, 2010-2015
45 x 35cm
Oil paint, Perspex
£1,000



Julian Wild
Ripple Painting III, 2010-2015
45 x 35cm
Oil paint, Perspex
£1,000





Julian Wild
Elements, 2010
Dimensions variable
Glazed stoneware ceramic
£300 each

