

# BANKSIDE'S IMMERSIVE ARTS FESTIVAL

24 SEPTEMBER – 7 OCTOBER 2016

**MERGE**

**BANKSIDE**

ART, MUSIC &  
PERFORMANCE

VISIT US AT [MERGEFESTIVAL.CO.UK](http://MERGEFESTIVAL.CO.UK)



[@MERGEFESTIVAL](https://twitter.com/MERGEFESTIVAL)  
[#MERGEBANKSIDE](https://twitter.com/MERGEFESTIVAL)



04

# Welcome to MERGE 2016

MERGE Bankside is back in 2016 to showcase a collection of immersive art, theatre, and music throughout Bankside, London SE1.

The festival features high profile names and emerging talent taking over spaces in the Bankside area, from Blackfriars to London Bridge from 24 September – 7 October.

Bompas & Parr will be connecting you with the supernatural at Hilton London Bankside's swimming pool. See Food Demonstrations Gone Wrong at Borough Market, and keep an eye out for an extraordinary spectacle around the Blackfriars Road area as Bureau of Silly Ideas finds new ways to commemorate the Zeppelin raids of WW1.

Time To Be Late returns to Blackfriars Road too, injecting humour and energy into the daily commute.

And of course, the ever popular Riverside Stage is back outside Tate Modern.

MERGE Bankside is curated and produced by Illuminate Productions, in collaboration with Better Bankside – Bankside's Business Improvement District. It is supported by Tate Modern and Southwark Council.



11



15

Illuminate Productions

Better Bankside

TATE

Southwark Council

DELANCEY

## BANKSIDE TRANSFORMED

# Voice of God

*Bompas & Parr*

**Hilton London Bankside,  
2-8 Great Suffolk Street,  
SE1 0UG**

**Southwark / London Bridge**

**29 September – 2 October**

**Thursday 12pm – 5.30pm  
Friday 4.30pm – 7.30pm  
Saturday and Sunday 10am – 5pm**

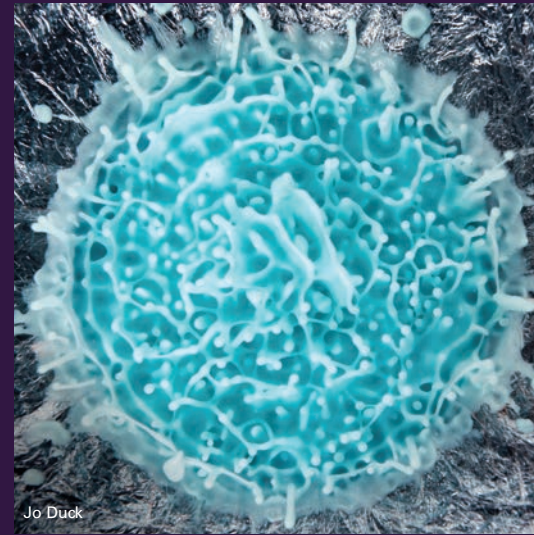
**£ FREE**

Experience Bompas & Parr's supernatural voice installation. The creative duo have conceived an art installation which transposes voices to infrasound to give you a supernatural experience at Hilton London Bankside's swimming pool.

*"The physical installation poses questions about consciousness, our perception of the physical world and our understanding of the supernatural"*

Voice of God is a world first; the only time that infrasound has been creatively used to give people a spectral visitation.

Bompas & Parr have worked with acoustic scientists to design and build the sound-based installation that appears to connect you with the supernatural. A custom sound system created by TPI Sound will broadcast infrasound at 19 Hz. This frequency is below the regular hearing threshold of a human



Jo Duck

but is the resonant frequency of the human eyeball. These low-frequency vibrations can cause the eyeball to distort activating the rods and cones in your eyes through pressure rather than light.

The soundscape itself is being created by composer and sound designer Dom James based on message recordings people were invited to send. These voices will trigger seemingly supernatural and divine visions through the medium of sound.

**For more about Bompas & Parr and the science behind Voice of God visit [mergifestival.co.uk](http://mergifestival.co.uk).**

Hilton LONDON BANKSIDE

# The Riverside Stage

Programmed by Sister Ray and New Roots

The Riverside Stage on the river walkway by the Millennium Bridge is curated across the weekend to showcase and promote original song writing and musical talent.

 River walkway outside Tate Modern, Bankside SE1 9TG

 Southwark / Blackfriars

 24 and 25 September

 12pm – 6pm

 FREE

## SATURDAY 24 SEPTEMBER

Programmed by Sister Ray

**Sister Ray** first opened on Berwick Street in Soho 30 years ago. In that time they've become an institution and seen plenty of musical genres delight, frustrate, annoy and enlighten. That's what they sell and that's what they love.

### 5pm MIGHTY DYNAMITE

Mighty Dynamite are a joyful merging of musical styles. The band are formed from members of indie favourites Mansun and Victoria. Filling venues wherever they go with their sideways look at life, love and escape, giving a voice to the unheard,

getting feet dancing and faces smiling, they're sure to be your new favourite band.

### 4pm JON KENZIE

Jon Kenzie is a singer-songwriter from Manchester. His solo music provides a fresh take on blues, folk, soul and Americana, sitting somewhere between the troubadour stylings of modern day practitioners such as M. Ward and the earthy edginess of Tom Waits.



### 3pm DANNY TOEMAN

London-born soul man Danny Toeman has worked hard to secure a reputation for his energetic live shows containing up tempo, feel good soul music. Danny has gone on to perform at legendary venues including the Royal Albert Hall, the O2 Arena, the Roundhouse, and appeared alongside several US and UK soul staples including Robert Cray and Betty Wright.

### 2pm WESLEY GONZALEZ

Wesley Gonzalez harks back to mid 70s singer-songwriters such as Todd Rundgren and Emmitt Rhodes, but with added elements of soul and funk – drawing upon influences like Sly And The Family Stone and Donny Hathaway.



### 1pm COLDBOYS

Winners of the Berwick Street Calling competition, their easy going songs are influenced by many bands from both America and the UK. Their music faintly reminisces the guitar work of Johnny Marr from The Smiths.

### 12pm GLENN HODGE BANNED

Contemporary folk singer Glenn Hodge is often compared to Billy Bragg, a troubadour to be reckoned with. His new single 'Perfect Gentlemen' demonstrates this combination of thought provoking lyrics and energetic musicianship.

## SUNDAY 25 SEPTEMBER

Programmed by New Roots

**New Roots** is committed to promoting events that shine a light on up and coming talent in the UK roots scene. [newrootsevents.com](http://newrootsevents.com)

### 5pm SISIKA

A four piece from south London, Sisika play soulful, sparsely arranged songs with close harmonies, warm melodic guitar, rhythmic piano lines and subtle grooves. The band draws on a range of influences to create their sound; from old folk harmonies, to triphop beats and rootsy jazz. Their debut EP is released this October.

### 4pm LORDS OF THYME

Featured by fRoots magazine as four from the New Folk Underground to watch. The Lords of Thyme are Joe Woolley, Tali Trow and Pat Kenneally, all past members of acclaimed UK prog-folk act Circulus. They share a love of esoteric folk, psych and progressive music, and have appeared on the 'Shirley Collins Inspired' album in collaboration with folk legend Bonnie Dobson, alongside Bonnie Prince Billy and many others.

### 3pm HOUSE ABOVE THE SUN

House Above The Sun are a roots rock group from south London led by singer/songwriter Jim Moreton. Distinguished by rich male/female vocal harmonies and inventive

guitar motifs, they play melodic and poetic songs with a soulful stripped down feel, ranging from bittersweet country soul balladry to groove based, tightly wound guitar epics. They are preparing to release their first full album by the end of 2016.



### 2pm GENEVIEVE

Genevieve is a singer songwriter originally from Edinburgh and now based in south-east London. Bringing together honest lyrics with a warmth and soulfulness reminiscent of Laura Marling and Ani DiFranco.

### 1pm LUCAS & KING

Lucas and King are a truly exciting new young duo emerging from Southampton. Songs of exceptional craft and depth pull influence from classic folk and American roots flavours, all delivered with the spine-tingling, unforgettable voice of Bo Lucas and perfectly judged guitar accompaniment from Hayleigh King.

### 12pm NED ROBERTS

London based acoustic singer-songwriter Ned Roberts was discovered by producer Luther Russell (Sarabeth Tucek, Richmond Fontaine, Noah & The Whale). The first single 'Red Sun' featured frequently on BBC 6 Music, BBC Radio 2, BBC Radio Scotland, and Radio 3, with the follow-up 'Blues #6' championed by Lauren Laverne, Jo Whiley, Gideon Coe, and Huey Morgan on BBC Radio. The new album is due for release later in 2016.



"Fantastic performance, really funny, witty and original"



## THEATRE


# Demonstration Gone Wrong

Robin Linde Productions

 **Demonstration Kitchen, Market Hall, Borough Market, SE1 1TL**

 **London Bridge**

 **24 September and 1 October**

 **12pm – 4pm  
(on the hour for 15 minutes)**

 **FREE**

**B**y trying too hard, having a different approach to team-work, and changing the recipe last minute by mistake, everything is sure to go unexpectedly wrong. Keeping up appearances during a live food demonstration at Borough Market, whilst trying to save the dish of the day, will escalate into a ludicrous display of antics in this interactive physical slapstick comedy.

After last year's overwhelming success, Monsieur Ma'Mon, the world's greatest chef, is back in London with his assistant Charlotta to present his newest food creations in a site-specific performance for Borough Market's demonstration kitchen.

At each performance a new effort is made to create the perfect dish, Ma'Mon style.

*Written, directed and performed by Jonathan Peck and Robin Linde.*

**BOROUGH MARKET**

## BLACKFRIARS STORIES

# Sightings! Blackfriars

*Bureau of Silly Ideas*

 **Blackfriars Road**

 **Southwark**

 **30 September and 1 October  
(weather dependent)**

 **30 September from 2pm,  
1 October from 4.30pm  
(for one hour)**

 **FREE**

**A**s part of the Blackfriars Stories series of events, Bureau of Silly Ideas (BOSI), which has an international reputation for its gloriously silly interpretations of heritage events, is referencing the Zeppelin attack of 1 October 1916 when the daring flying ace Heinrich Mathy's Zeppelin was downed in a blazing fireball over Blackfriars Bridge, creating a harrowing yet spectacular vision for Londoners.

Of course, they won't be setting anything on fire – but they will be creating an extraordinary diversion around the Blackfriars Road area. Led peas-fully by the Peas-Corps (bringing Peas to the World), local people and visitors can get trained in the Peas Corps tactics, follow the Foot Patrol and learn the truth about rumours of air support!

Harnessing their unique take on the contradictions of war and its aftermath, BOSI will create a localised spectacle in



the Blackfriars Road area, in a free show that will resonate with all members of the community, whether they're residents or workers. While by no means glossing over the horror of the original story (Zeppelins were the first ever machines to drop bombs from the air on civilians) Sightings! Blackfriars will both educate and entertain with a show aiming to replace the fear and destruction of 100 years ago with fun and creativity.

## MUSIC

# MERGE Radio Show

Resonance FM

📅 20 September (8pm)  
repeated 28 September (5.30pm)

🌐 [resonancefm.com](http://resonancefm.com)

**M**ERGE will be collaborating with Resonance FM for a show which will include live music, an interview with Sam Bompas from Bompas & Parr, and interviews with the directors of *Time To be Late* and *Demonstrations Gone Wrong* – all part of this year's MERGE Festival.

Live music acts include Ned Roberts, Sisika, House Above The Sun, and Jon Kenzie. See more about these acts on *The Riverside Stage* pages.

Resonance is a groundbreaking 24/7 radio station which broadcasts on 104.4 FM to central London, DAB to Greater London, nationally on Radioplayer and live streamed to the rest of the world.

Founded in 2002, Resonance encourages creativity through radio. Its resources are open to a wide range of artists, art forms and diverse communities. Resonance's expert, arts-focused programmes challenge, inspire and transform people's creative and listening experiences.



## MUSIC

### Lunchtime Gigs

*Various locations, follow @MergeFestival on Twitter for live updates or visit [mergefestival.co.uk](http://mergefestival.co.uk) for more information*

**M**ERGE promises to entertain you on your lunchbreak, whether you're taking some time out of the office or just wandering through Bankside.

A variety of loud, lively and theatrical music performances will pop up in various spots so keep your eyes and ears peeled.



Rumpus Room, Mondrian London

## Happenings

### Skyline Sessions at Mondrian London

Every Wednesday from 7pm  
20 Upper Ground, SE1 9PD

Rumpus Room, a rooftop bar situated on the 12th floor of Mondrian London at Sea Containers, plays host to Skyline Sessions – a live music series every Wednesday night. With striking views across the river Thames and London's skyline, this hidden gem is a modern interpretation of 1920s London. Sunshine by day, skyline by night.

### Live music at The Gladstone Arms

Check [mergefestival.co.uk](http://mergefestival.co.uk) for dates

64 Lant Street, SE1 1QN

'The biggest small venue in the world', throughout September and October The Glad will showcase a variety of live roots, blues and folk music, as it has done for the last decade. See soul man Dai & the Ramblers, Dom Pipkin solo on the piano and ever-entertaining The Yess Mess. See more information about the musicians on the website.

### Wheatsheaf: Happy 185th Birthday to Young's

Thursday 22 September  
6 Stoney Street, SE1 9AA

As Young's celebrates its 185th Birthday, join the Wheatsheaf for... spoiler alert: free beer (and probably cake).

### The Bridge Choir

Monday 26 September, 6.45pm – 8.45pm  
Kitchen @ The Bridge, 73 – 81 Southwark Bridge Road, SE1 0NQ

The Bridge Choir, based in Bankside, will be performing a range of pop, gospel, soul and reggae.

### Sunday Sessions at Bedales

Sunday 2 October, drink specials start at 5pm and Holloway will start at 7.30pm  
5 Bedale Street, SE1 9AL


Join Bedales as they welcome Lottie Holloway for a fun acoustic set. The three-piece, fronted by the striking blonde haired lead singer, is a beacon for new music in London's wave of indie-electro and alt-popular bands.


## Time To Be Late

Written and directed by  
Jonathan Peck and Robin Linde

 Various points along Blackfriars Road SE1, including pavements and buses

 Southwark

 6 – 7 October

 8.30am – 9.30am, 12.30pm – 1.30pm and 5.30pm – 6.30pm

 FREE

**'Imagination is the only weapon in the war against reality.'**

Lewis Carroll

Providing commuters with some much needed comedy on their journey to and from work, Time To Be Late delivers immersive pop-up art, music and theatre experiences at various points along Blackfriars Road.

After its success in MERGE 2015, in partnership with Southwark Council, this year we will draw upon infamous characters from the area and the rich history of Southwark to inject energy and humour into the daily commute.

A series of weekday early morning, lunchtime and early evening 'happenings' will take place in unexpected places – at bus stops, outside Southwark tube station, and in local businesses.

TimeTo Be Late will bring a smile to your commute and encourage you to look at the world in a slightly different way.



Fantastic to be greeted by @MergeFestival artists this morning on leaving Southwark @jubileeline station- I'm still smiling!

@alisonleary1

Hilarious! Performers from Time To Be Late, part of @mergefestival #mergebankside in #southwark

@bakerpictures



## Frankenstein and Southwark

### LOOK OUT FOR

Frankenstein introducing his wide eyed creation to the glorious sights and people around Blackfriars Road.

Despite being set in locations all over the world, there are numerous connections between the novel Frankenstein and the London Borough of Southwark. Mary Wollenscroft, mother of Mary Shelley, lived in the Blackfriars area from 1788-1791: a time when the area was seeing great change due to the opening of the new Blackfriars Bridge.

**"A famous ménage à trois existed on Blackfriars Road where Mary Shelley, poet Percy Bysshe Shelley and partner of Lord Byron, Claire Clairmont made a liberal home in Nelson Square just off Blackfriars Road in 1814"**

Mary Shelley, author of Frankenstein (published 1818) was born in 1797. She married romantic poet Percy Bysshe Shelley in 1816. Two years later, she published her most famous novel, Frankenstein.

A famous ménage à trois existed on Blackfriars Road where Mary Shelley, poet Percy Bysshe Shelley and partner of Lord Byron, Claire Clairmont made a liberal home in Nelson Square just off Blackfriars Road in 1814.

Southwark was also the birthplace of William Henry Pratt, better known as Boris Karloff. Karloff is notable as the actor who portrays Frankenstein's Monster in Frankenstein, Bride of Frankenstein and Son of Frankenstein.

Shelley's Frankenstein depicts a world of instability and uncertainty, parallels which can be drawn with the area of Southwark which was undergoing huge change at the beginning of the 19th century.



TIME TO BE LATE

TIME TO BE LATE

## Pilgrims and Blackfriars

**LOOK OUT FOR**

Two tiny adventurers with a lot on their minds and even more on their backs. **Hodman and Sally by Flying Buttresses** will walk the length of Blackfriars Road.



TIME TO BE LATE

In celebration of Pilgrims and Blackfriars, join these elderly amblers as they set out to comprehend the modern world, meet strange and exciting new people and search for a decent place to camp!

An interactive street theatre act, be enchanted by the witty, adorable characters of Hodman and Sally and the unique illusion the act creates. A heart-warming and magical walkabout show.

Blackfriars has a long standing link with the historical pilgrimage from London to Canterbury, famous today through Chaucer's Canterbury Tales. The link lies in the history of the name Blackfriars itself, named after the Dominican Friars who first came to Canterbury in 1221. The Dominicans were

known as Black Friars due to the black caps that the Friars wore. Three Friars came to London setting up a monastery in Holborn. Fifty years later such was their patronage that they obtained land on the north side of the Thames near the river Fleet, consequently giving rise to the area we call Blackfriars today. Remnants of the friary can still be seen today, for example the Blackfriar pub and the Apothecaries Hall which is now on the site of their guesthouse.

**LOOK OUT FOR**

Now it's **Musical Ruth's** turn to spread her harmonious message to Blackfriars Road, this will be one to remember!

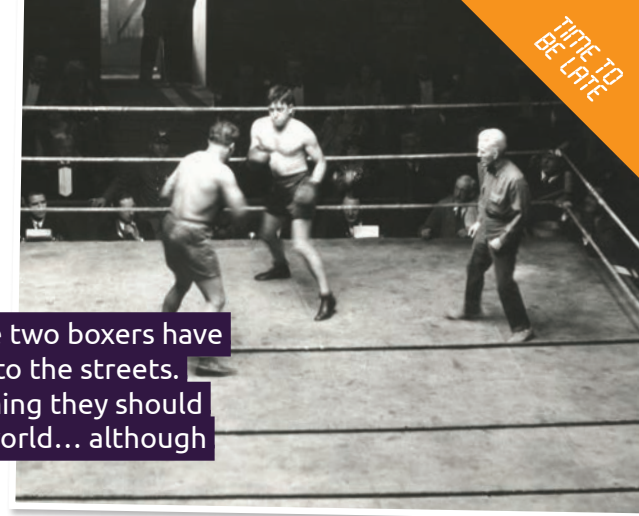


**M**usical Ruth is a humorous mix and mingle comedy act performed on an extravagantly decorated baby grand piano built on to an electrically powered vehicle. Visually stunning, once witnessed Musical Ruth is never forgotten.

## The Ring on Blackfriars Road

**LOOK OUT FOR**

The big fight, so big that these two boxers have taken it out of the ring and onto the streets. Both undefeated and proclaiming they should be reigning champion of the world... although it's their first ever fight.



TIME TO BE LATE

Inspired by 'The Ring', a boxing stadium which once stood on Blackfriars Road. Although established as a boxing venue in 1910, the actual building dated all the way back to 1783; originally designed as a chapel by the Reverend Rowland Hill – who reportedly opted for the unusual, circular design so that there would be no corners in which the devil could hide.

Decades later, the man responsible for overseeing the chapel's conversion was Dick Burge, a former English Middleweight

champion. The Ring opened in 1910, quickly attracting keen crowds and staging events four to five times a week. It became a bare knuckle boxing venue for decades, during which time Bella Burge (aka Bella of Blackfriars) broke the taboo of women attending fights and she later took over the running of the site – often ejecting drunks herself. Dick and Bella also set up a soup kitchen which they ran from the building during the quieter daytime hours to help London's homeless.

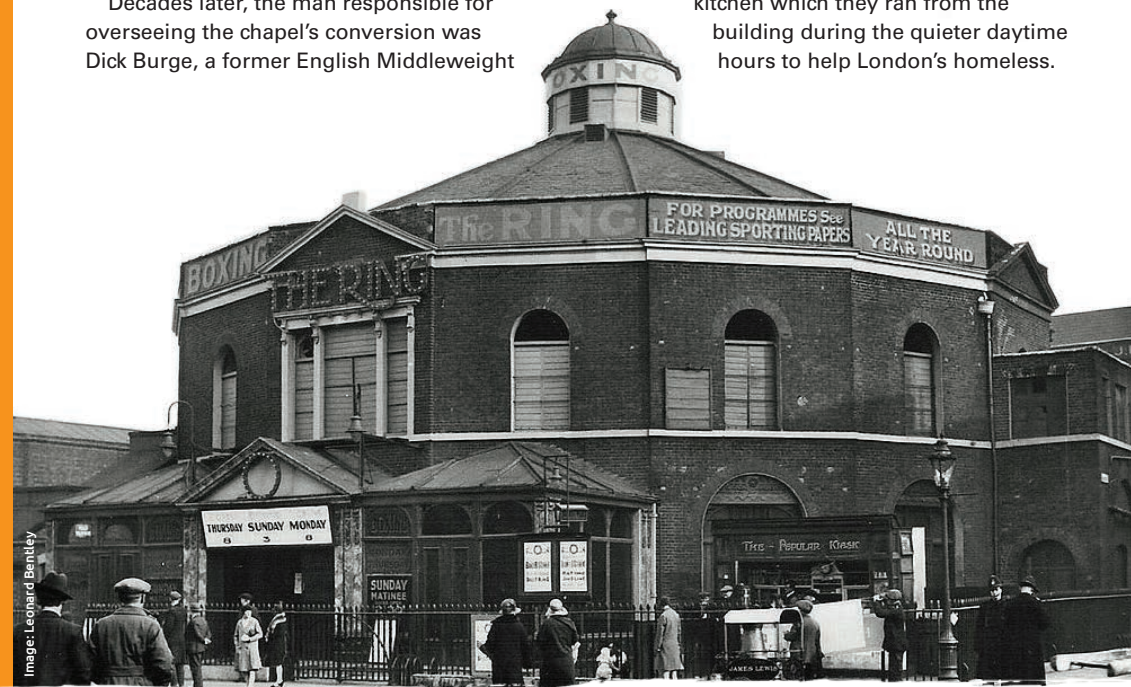


Image: Leonard Bentley

**LOOK OUT FOR**

**Bert Hardy**, his camera and his muse capturing London's beauty in black and white... only to discover the streets of Southwark are filled with new fashions and distractions galore.



Photographer Bert Hardy was born into a working class family in Blackfriars in 1913. Hardy left school at the age of 14 to begin earning money working in a chemist's shop which also processed photographs. A self-taught photographer, Hardy's first break came when he managed to photograph King George V and Queen Mary as they passed through his borough

in a carriage. He later served as a military photographer from 1942-46, taking part in the 1944 D-Day landings. After the war Hardy worked in poor districts such as Elephant and Castle, documenting their social scene. The resulting images are today considered classics showing the strength of the human spirit despite the dire poverty found there. Hardy received substantial critical acclaim for these photographs.

TIME TO BE LATE

**ON THE LINE**  
**United we stand**



Join us for boogie, bingo and banter. This theatre piece, part of Time To Be Late in partnership with Southwark Council, will celebrate a shared strength and dignity in unity. Stand up against the injustice that threatens to destroy our homes, history and identity all while dancing the night away.

It is 1985 and a group of proactive miners' wives are hosting a festive fundraising party to collect for the hungry families in their community – and we're all invited. Babs and her best friend Jackie are putting on a night to remember.

ON THE LINE draws parallels between Thatcher's "Divide and Rule" tactics and today's political agenda, opening up a moment in recent history and making it more immediate today.

Our audience is encouraged to bring a food donation to the party which will then go directly to those Londoners most in need. Partnered with a London food bank, we are supporting parts of our own community that are forced to live on the line. The 7pm performance at Platform Southwark will be followed by an 80s disco!



*Written by Aled Pedrick, directed by Yasmeen Arden. Music composed and performed by Kevin Potton. Brought to you by Robyn Bennett in collaboration with Robin Linde Productions.*

**"It's hard to tell if it's improvised or skilfully scripted to seem improvised, either way, there's a freshness to their performance which is hugely engaging for the duration"**

@AmieAmieTay

**LOOK OUT FOR**

Stop and Go... where would London be without its much loved lollipop lady shining in the streets and helping us all on our merry way.

Lollipop men and women, known elsewhere as crossing guards, have a history that can be traced back to 1920s America. The term lollipop man/woman is only used in Britain and Australia and originates from the circular signs carried on a stick. Britain did not have its first lollipop person until 1937 when a Mrs Hunt took up the role. The longest serving lollipop lady in the UK was Eunice Robinson who worked for at least 40 years.



**LOOK OUT FOR**

Using the Cycle Super Highway? Late for work? Life is so much easier on your bike with supporting fans cheering you along your way.

Cycle Superhighways are cycle routes running from outer London into and across central London. They give safer, faster and more direct journeys into the city. Four Superhighways have already launched. The Southwark Spine cycle route is an important new addition to the cycle network in Southwark.

📍 Platform Southwark, 1 Joan Street, SE1 8BS

🚫 Southwark / Waterloo

📅 Friday 7 October

🕒 7pm – 60 minute play followed by 80s disco

£ FREE – booking required. Purchase tickets online from [mergifestival.co.uk](http://mergifestival.co.uk)







TIME TO  
BE LATE  
6-7 OCTOBER 2016

Image, The Naturals, Time To Be Late, MERGE 2015

VISIT US AT [MERGEFESTIVAL.CO.UK](http://MERGEFESTIVAL.CO.UK)



[@MERGEFESTIVAL](https://twitter.com/MERGEFESTIVAL)  
[#MERGEBANKSIDE](https://twitter.com/MERGEFESTIVAL)