



MicroTek
Finishing

Standard Inspection Report

Job # 3265-SMP01 Date 11/19/15

Customer PO # SAMPLE

Customer MTF Sample Contact Tim Bell

Part # Seat Clamp

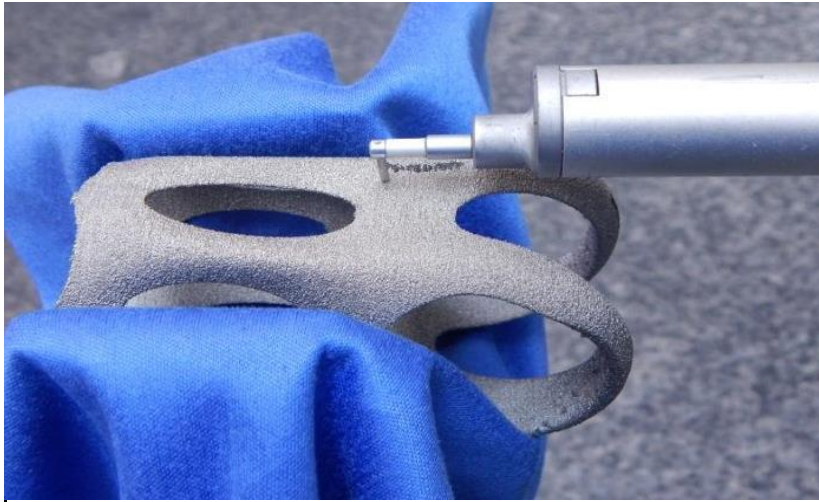
Part Description ARCAM Seat Clamp

Before MMP

After MMP

Sample Length (le) .160" Cut Off (lc) .030"

Sample Length (le) .160" Cut Off (lc) .030"



Technician SSA

Ra μ"	Rq μ"	Rsk μ"	Rt μ"
663.810	846.049	-0.454	4257.579
662.993	842.947	-0.464	4199.182
458.068	-0.176	-0.369	4190.843

Avg. **594.957** **562.940** **-0.429** **4215.868**

Technician SSA 12/14/15

Ra μ"	Rq μ"	Rsk μ"	Rt μ"
24.569	30.655	1.649	176.877
22.806	29.269	1.729	186.747
21.370	28.016	1.763	186.901

Avg. **22.915** **29.313** **1.714** **183.508**

Parameter	Micro inch μ"	Micro meter μm
Ra	594.957	15.112
Rq	562.940	14.299
Rsk	-0.429	-0.011
Rt	4215.868	107.083

Parameter	Micro inch μ"	Micro meter μm
Ra	22.915	0.582
Rq	29.313	0.745
Rsk	1.714	0.044
Rt	183.508	4.661



Standard Inspection Report

Job # 3265-SMP01 Date _____

Customer PO # SAMPLE

Customer MTF Sample Contact Tim Bell

Part # Seat Clamp

Part Description ARCAM Seat Clamp

Before MMP

After MMP

Sample Length (le) .160" Cut Off (lc) .030"

Sample Length (le) .160" Cut Off (lc) .030"



Technician SSA

Ra μ"	Rq μ"	Rsk μ"	Rt μ"
667.337	822.106	-0.348	3775.936
667.594	822.873	-0.350	3782.881
665.786	820.456	-0.337	3748.112

Avg. 666.906 821.812 -0.345 3768.976

Technician SSA

Ra μ"	Rq μ"	Rsk μ"	Rt μ"
483.449	607.316	-0.914	3374.087
482.541	600.928	-0.871	3203.975
485.555	601.680	-0.857	3119.944

Avg. 483.848 603.308 -0.881 3232.669

Parameter	Micro inch μ"	Micro meter μm
Ra	666.906	16.939
Rq	821.812	20.874
Rsk	-0.345	-0.009
Rt	3768.976	95.732

Parameter	Micro inch μ"	Micro meter μm
Ra	483.848	12.290
Rq	603.308	15.324
Rsk	-0.881	-0.022
Rt	3232.669	82.110



Standard Inspection Report

Job # 3265-SMP01 Date _____

Customer PO # SAMPLE

Customer MTF Sample Contact Tim Bell

Part # Seat Clamp

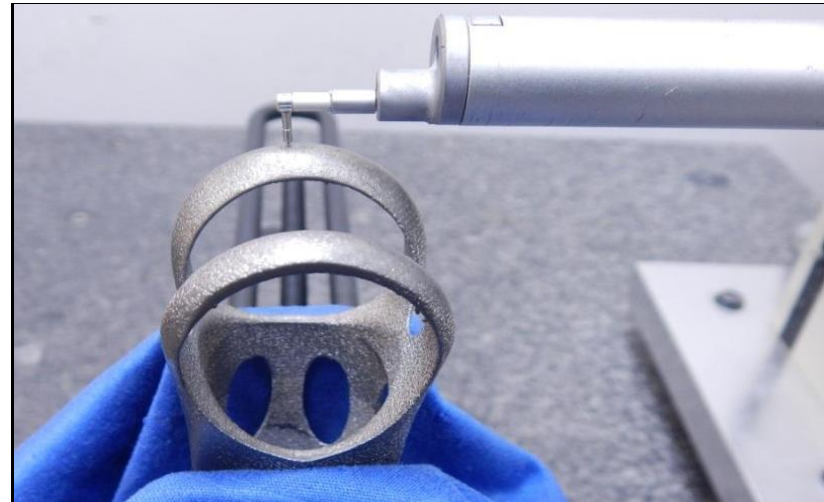
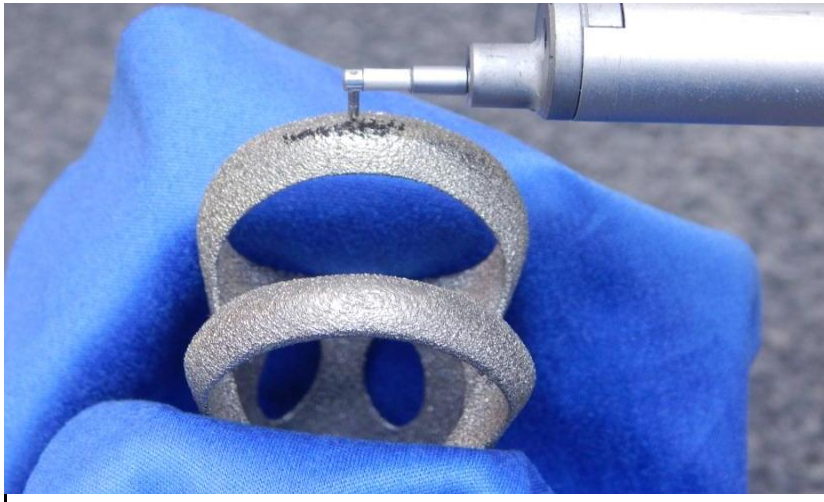
Part Description ARCAM Seat Clamp

Before MMP

After MMP

Sample Length (le) .160" Cut Off (lc) .030"

Sample Length (le) .160" Cut Off (lc) .030"



Technician SSA

Ra μ"	Rq μ"	Rsk μ"	Rt μ"
300.018	409.127	0.116	2329.601
302.673	412.111	0.161	2331.303
302.489	413.270	0.840	2321.541

Avg. **301.727** **411.503** **0.372** **2327.482**

Technician SSA

Ra μ"	Rq μ"	Rsk μ"	Rt μ"
46.206	81.282	-3.479	700.468
46.323	81.654	-3.478	706.865
46.050	81.617	-3.486	707.120

Avg. **46.193** **81.518** **-3.481** **704.818**

Parameter	Micro inch μ"	Micro meter μm
Ra	301.727	7.664
Rq	411.503	10.452
Rsk	0.372	0.009
Rt	2327.482	59.118

Parameter	Micro inch μ"	Micro meter μm
Ra	46.193	1.173
Rq	81.518	2.071
Rsk	-3.481	-0.088
Rt	704.818	17.902



Standard Inspection Report

Job # 3265-SMP01 Date _____

Customer PO # SAMPLE

Customer MTF Sample Contact Tim Bell

Part # Seat Clamp

Part Description ARCAM Seat Clamp

Before MMP

After MMP

Sample Length (le) .160" Cut Off (lc) .030"

Sample Length (le) .160" Cut Off (lc) 0.03



Technician SSA

Ra μ"	Rq μ"	Rsk μ"	Rt μ"
891.164	1065.031	-0.142	4643.365
899.958	1074.390	-0.054	4649.204
899.879	1074.017	-0.051	4646.830

Avg. 897.000 1071.146 -0.082 4646.466

Technician SSA

Ra μ"	Rq μ"	Rsk μ"	Rt μ"
379.406	544.925	-1.800	3110.145
379.193	543.848	-1.795	3102.567
379.734	544.352	-1.795	3102.567

Avg. 379.444 544.375 -1.797 3105.093

Parameter	Micro inch μ"	Micro meter μm
Ra	897.000	22.784
Rq	1071.146	27.207
Rsk	-0.082	-0.002
Rt	4646.466	118.020

Parameter	Micro inch μ"	Micro meter μm
Ra	379.444	9.638
Rq	544.375	13.827
Rsk	-1.797	-0.046
Rt	3105.093	78.869