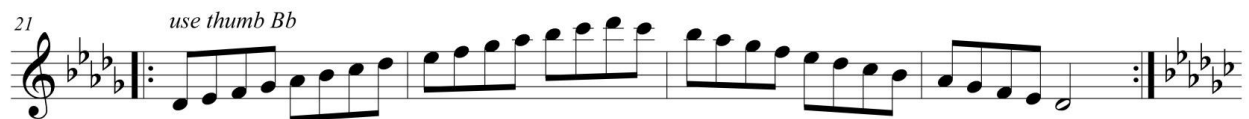
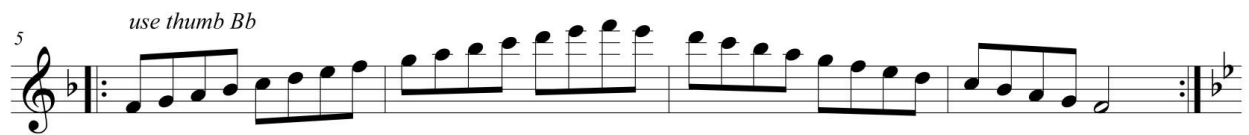


Two Octave Major Scales



25 *use lever Bb/A#*



Musical notation for measure 25, starting with a treble clef and a key signature of three flats (Bb, Eb, Ab). The notation includes a repeat sign, followed by a sequence of eighth notes, a series of sixteenth notes, and a final quarter note. The measure ends with a double bar line and repeat dots.

29 *use lever Bb/A#*




Musical notation for measure 29, starting with a treble clef and a key signature of three sharps (F#, C#, G#). The notation includes a repeat sign, followed by a sequence of eighth notes, a series of sixteenth notes, and a final quarter note. The measure ends with a double bar line and repeat dots.

33



Musical notation for measure 33, starting with a treble clef and a key signature of three sharps (F#, C#, G#). The notation includes a repeat sign, followed by a sequence of eighth notes, a series of sixteenth notes, and a final quarter note. The measure ends with a double bar line and repeat dots.

37



Musical notation for measure 37, starting with a treble clef and a key signature of three sharps (F#, C#, G#). The notation includes a repeat sign, followed by a sequence of eighth notes, a series of sixteenth notes, and a final quarter note. The measure ends with a double bar line and repeat dots.

41



Musical notation for measure 41, starting with a treble clef and a key signature of two sharps (F#, C#). The notation includes a repeat sign, followed by a sequence of eighth notes, a series of sixteenth notes, and a final quarter note. The measure ends with a double bar line and repeat dots.

45 *also 8^{vb} with b foot*



Musical notation for measure 45, starting with a treble clef and a key signature of one sharp (F#). The notation includes a repeat sign, followed by a sequence of eighth notes, a series of sixteenth notes, and a final quarter note. The measure ends with a double bar line and repeat dots.