

# UNIVERSAL PRIMER

Universal Primer is a **water-based primer-sealer for interior and exterior areas**. It offers low odour application, quick drying convenience and promotes adhesion on difficult surfaces. Universal Primer **effectively primes, seals and blocks stains for a wide variety of interior and exterior surfaces**. A 'bond coat' primer that's great for hard-to-stick surfaces, offering excellent adhesion with minimal preparation. Also **prevents rust formation** when applied over clean ferrous metal such as iron and steel. Universal Primer **contains a biocide** that protects the dried coating against fungal degradation, making it **ideal for high-humidity areas such as bathrooms and utility rooms**. It offers effective resistance to fungal degradation on the underside and surface of the primer film, prolonging the life of your paint finish.



# ULTIMATE PRIMER

The **Ultimate Shellac-Based Primer & Stain Blocker**. Offering **excellent adhesion to glossy surfaces** - even glass. **Blocks stubborn and persistent stains**. The advanced shellac formula seals porous surfaces with excellent enamel holdout, even sealing bleeding knots and sap streaks. Suitable for **use on water stains, fungal degradation, nicotine, oil stains, marker pen stains** and more. Designed to **permanently block odours** (from smoke and fire damage to odours from pets and nicotine). The **dried film is non-toxic and hypo-allergenic** and may be used in areas where incidental contact with food items occur. Ideal for interior ceilings, walls, doors and general paintable surfaces. Including spot priming on wood, metal, trims and PVC.

# CONTAINS A BIOCIDES

**Universal Primer** and **Omni-White** both contain a **biocide** that protects the dried coating against fungal degradation, including efficacy against the following organisms:

## Moulds

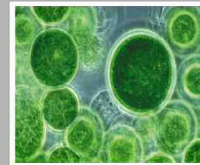
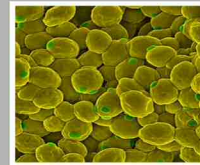
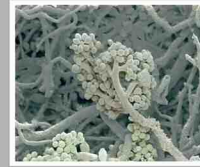
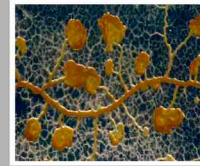
Alternaria Alternata  
Aspergillus Niger  
Aspergillus Versicolor  
Aureobasidium Pullulans  
Cladosporium Cladosporoides  
Penicillium Funiculosum  
Penicillium Purpurogenum  
Phoma Violacea  
Ulocladium Atrum

## Yeasts

Candida Albicans  
Rhotorula Ruba  
Saccharomyces Cerevisiae

## Algae

Chlorella Emersonii  
Gloeocapsa SP  
Nostoc Commune  
Pleurococcus SP  
Scenedesmus Vacuolatus  
Stichococcus Bacillaris  
Stigeoclonium Tenue  
Trentepohlia Aurea  
Trentepohlia Odorata



# STAIN COVER +

Stain Cover + is an **interior & exterior primer/sealer**, stain sealer and bonding coat that dries for over-coating in only two hours. On interior surfaces, Stain Cover + dries quickly and has excellent hiding power providing outstanding stain killing and adhesion promoting properties. Stains of all kinds are permanently sealed so topcoats are blemish free. Stain Cover + is **especially effective on nicotine and water stains**. New wood trim can be primed, sanded and top-coated the same day, saving time and money. On exterior surfaces, Stain Cover + has a unique formulation that delivers full penetration and flexibility on all surfaces, especially dimensionally unstable panels and trims, where few oil-based primers can succeed. Stain Cover + **resists cracking and peeling** and is compatible with most decorative top coats.

# OMNI-WHITE

Omni-White **contains a biocide** that protects the dried coating against fungal degradation. This paint is designed to **resist cracking, peeling and blistering** to avoid constant maintenance. Omni-White bonds to existing painted surfaces and promotes adhesion on a wide range of surfaces with minimal preparation. Omni-White also seals porous surfaces and is **ideal for use in areas of persistent high humidity**, frequent temperature changes and poor air circulation. Washable, scrubbable, stain and moisture resistant finish. Self-priming - sticks to surface with minimal preparation. **A fade resistant coating**. Water-based, easy to apply, low odour and quick drying.



# WHICH PRIMER?

## UNIVERSAL PRIMER

WATER BASED

Promotes Adhesion, Blocks Stains  
Anti Fungal Protection  
Prevents Rust Formation  
Low Odour, Quick Drying, Non Toxic  
Dries in 30 minutes, Recoat in 1 hour

## ULTIMATE PRIMER

SHELLAC/SOLVENT BASED

Promotes Adhesion  
Blocks Stains and Odours  
Quick Drying, Non Toxic  
Dries in 20 minutes, Recoat in 1 hour

## STAIN COVER +

SOLVENT BASED

Stain & Moisture Resistant  
Adhesion Promoting  
Minimal Preparation  
Quick Drying, Non Toxic  
Dries in 1 - 2 hours, Recoat in 2 - 4 hours

## OMNI-WHITE

WATER BASED

Moisture Resistant  
Anti Fungal Protection  
Minimal Preparation, Adhesion Promoting  
For Priming or Finishing Coats  
Low Odour, Quick Drying, Non Toxic  
Dries in 30 minutes, Recoat in 2 hours

Advanced Technologies Primers  
 Anti Climb Paint  
 Anti Corrosive Primer  
 Anti Rugine (MIO) Primer  
 Anti Slip PU Floor Paints  
 Anti Slip (WATER BASED) Floor Paints  
 Apexior 1 & 3  
 Black Bitumen  
 Black Magic  
 Chalk Paint  
 Chlorinated Rubber  
 Concrete Sealer  
 Emulsion Glaze  
 Flagespeed/QAD Enamel  
 Heavy Duty Elastomeric Floor Paint  
 Polyurethane Floor Paint  
 Red/Grey Oxide QD  
 Rust Converter  
 Roadline Paints  
 Roofix M & 20/10  
 Tile Paints

Asipo Algicidal Treatment  
 Asipo Barrier  
 Asipo Internal  
 Asipo Dampstain Proofer  
 Asipo Algicidal External  
 Asipo All Weather Coating  
 Asipo Fine Textured Masonry Paint  
 Asiposeal

Acrylic Primer/Undercoat  
 Aluminium Gloss  
 Aluminium Primer  
 Flag Gloss  
 Flag Undercoat  
 Flag Vinyl Matt & Silk  
 Masonry Paint Smooth  
 Masonry Paint Fine Textured  
 Patent Knotting Solution  
 Shed & Fence Treatment  
 Wood Primer

Antifouling Thinner  
 Bilge Paint  
 Cruising Antifouling  
 Hull Wax  
 Multi-Purpose Metallic Primer  
 Performance Extra Antifouling  
 Yacht Varnish

Aqualac  
 Aqualac PU  
 Aquapolish

2 Pack Tannin Blocker  
 General Purpose Varnish  
 Polyurethane Varnish  
 Quick Drying PU Varnish  
 Yacht Varnish

Best White Polish  
 Brush Polish  
 Button Polish  
 French Polish  
 Garnet Polish  
 Pure Shellac Varnish  
 Shellac Sanding Sealer  
 Special Pale Polish  
 Transparent Polish

431 Wax  
 62 Wax  
 Classic Wax  
 Gilt Wax  
 Liming Wax  
 Natural Creamy Beeswax

Boiled Linseed Oil  
 Danish Oil  
 Furniture Cleaner  
 Raw Linseed Oil  
 Teak Oil  
 Spirit Stain  
 Water Stain

Genuine Turpentine  
 HD Thinner  
 T10009 Thinners Xylene

# FLAG PAINTS



## THE ADVANCED SOLUTION

With over 75 years experience, FLAG Paints manufactures high quality specialist coatings and problem solving solutions, including associated products at highly competitive prices. We are proud to offer first class QUALITY and SERVICE at all times.

Advanced Technologies products are made in  
 The United Kingdom by FLAG PAINTS LTD

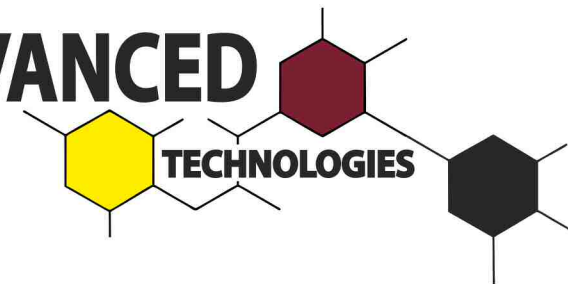
### IMPORTANT NOTE:

For technical reasons connected with colour reproduction and paint manufacturing the colours and finishes are for approximate guide purposes only.

### SAFETY:

Handle with care. Before and during use, observe all safety labels on packaging and paint containers, consult Material Safety Data Sheets and follow all local or national safety regulations.

# ADVANCED



# TECHNOLOGIES

## THE ADVANCED SOLUTION

# ADVANCED PRIMERS

Advanced Technologies made by FLAG Paints Ltd.  
 8 Springfield Road, Springfield Industrial Estate  
 Burnham-on-Crouch, Essex, CM0 8UA, United Kingdom  
 Tel: +44 (0) 1621 785173 Fax: +44 (0) 1621 785393  
[www.flagpaints.co.uk](http://www.flagpaints.co.uk) [sales@flagpaints.co.uk](mailto:sales@flagpaints.co.uk)