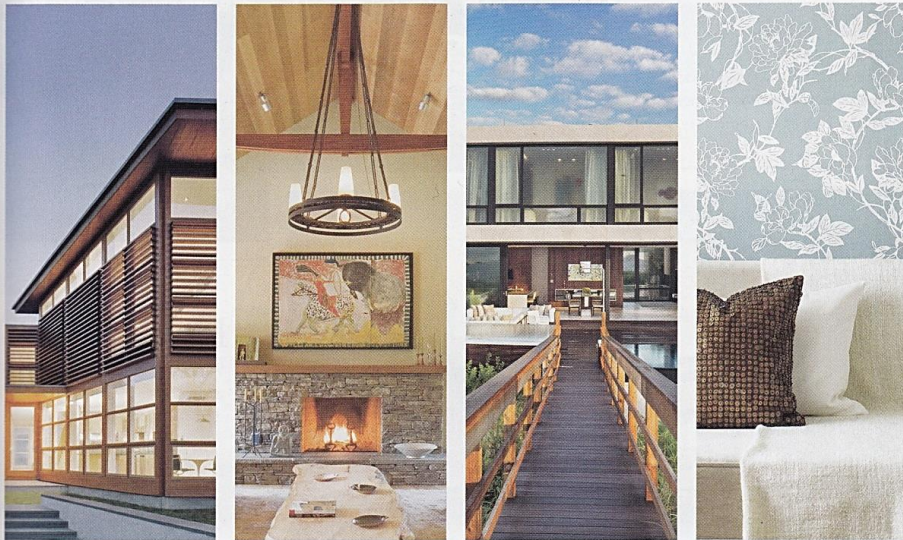


luxe.

interiors + design®

Winter 2014



luxe. *scene*

blue print.

DELVE INTO A STRIKING ASSEMBLAGE OF ARCHITECTURAL GEMS
AND STRUCTURAL HOME FURNISHINGS CONCEIVED BY AN
IMPRESSIVE LINEUP OF HIGH-CAIBER DESIGNERS.

WRITTEN AND PRODUCED BY **MALLORY EVANS**

✓ CLASSIC REVISION

Come fall, Tribeca's North Historic District will welcome a brilliant new boutique development to its roster of landmark buildings and storied cobblestone streets. Imagined by architect Morris Adjmi, along with collaborative design studio Gachot, The Sterling Mason is housed in a turn-of-the-last-century brick warehouse supplemented by a newly constructed twin clad in a dazzling metallic façade. For the residences, one of which is shown below, John and Christine Gachot envisioned interiors that combine the best of the loft experience—high ceilings, open spaces—and the classic pre-war apartment, culminating in a fluid progression through a series of rooms. "We took a cue from the architecture's interplay between the historic and modern," says Christine, "embracing the craft of 20th-century Danish furnishings and American oak flooring, juxtaposed with state-of-the-art cabinetry and appliances." thesterlingmason.com

