

EB10 SERIES BATCH CONTROLLERS

Features/Benefits

- Large 8 digit LCD batch total display & cumulative totaliser
- Robust IP66 field mountable housing with protection cover or DIN panel mount version
- Simple flow chart touch key programming
- Scaleable universal high speed pulse & frequency flow inputs
- Two stage control available for soft start & close sequencing.
- PIN protected programming
- Automatic overrun compensation
- Missing pulse (no flow) alarm
- Maximum batch size limiting
- Non volatile memory
- Multiple batcher interlock function (network up to 10 controllers)
- Reverse polarity protection

Network Interlocks

As many as 10 Ecobatch controllers may be networked together with one common flowmeter for applications where one liquid is being dispensed to a number of individually operated outlets. Ecobatch will also take an "inhibit start" input signal from other control or plant equipment.

Programming

Simple PIN protected flow chart programming with English prompts guide you through the programming routine greatly reducing the need to refer to the instruction manual.

Options

- AC power + SPDT control relays
- Ecobatch batching systems
Also available
- Battery totalisers
- Flow rate totalisers



Overview

The EB Ecobatch high speed batch controller is specifically designed to operate with common pulse producing flowmeters such as positive displacement, turbine, mass, vortex or magnetic style. The instrument displays batch value, batch progress & cumulative total in engineering units as programmed by the user, it also logs the total number of batches performed. Ecobatch scrolls messages to prompt the user at each stage of operation. Batch limiting and no-flow detection are "feature safeguards" against erroneously high batch entries, loss of the flow input signal, control valve or pump failure.

Control Outputs

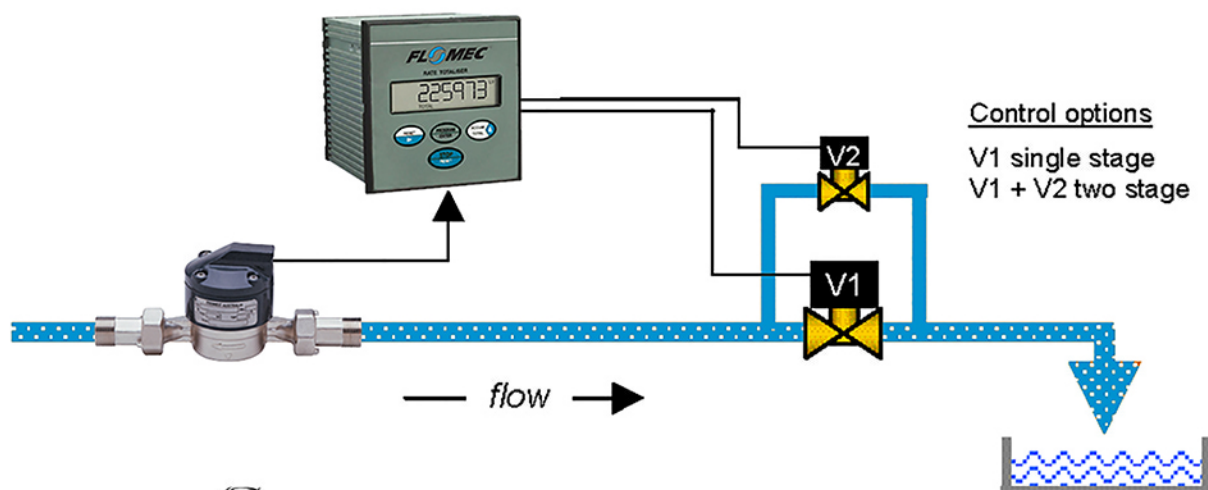
DC powered models have two solid state 1A NPN current sinking control outputs, AC & DIN models have two single pole double throw (SPDT) 5A relays. These two independent outputs can be programmed to provide stepped control at the start and/or end of each batch. An Automatic Overrun Compensation feature corrects for any batch errors attributed to slow closing valves or flow rate deterioration

Specifications

Liquid crystal display (LCD)	9mm high alpha numeric characters + subscripts
Batch & accumulated totals	8 digit, programmable to 3 decimal places
Engineering units displayed	Litres, gallons, m3, lbs, kgs or no eng. units displayed
Input types (pulse & frequency)	Reed switch, open collector, coil (15mV P~P min.) Namur & other proximities. Max. frequency 10Khz
Input scaling range	0.001~9,999,999.999 with 3 floating decimal points
Control outputs	Two 1A NPN open collectors, 24Vdc max. Two SPDT 5A relays (with AC & DIN powered versions)
Alarm output (no flow alarm)	1A open collector (NPN/PNP selectable), 24Vdc max.
Operating temperature	-10~+80°C (14~176°F), refer factory for higher temp.
Power requirements	12~24Vdc, 50mA, 95~260Vac options
Status interlocks	Batch status output, batch inhibit input, network looping
Enclosures (two styles)	IP66 (NEMA 4X) GRN field mount or DIN panel mount
Mounting	Meter & stem mount, wall, surface, pipe or panel mount
Batching systems	Ecobatch with flowmeter & control valve eg: UM020 system, 1~70 L/min, 10 bar, 90°C

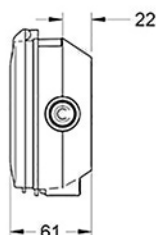
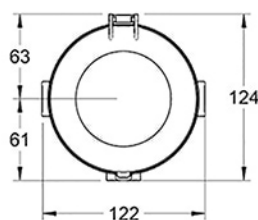
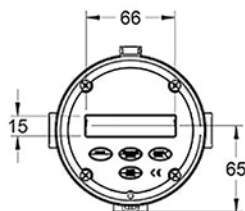
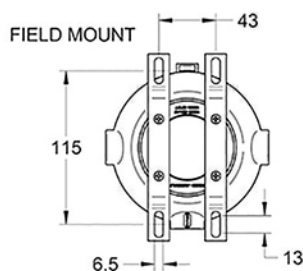
EB10 SERIES BATCH CONTROLLERS

Single or Two Stage Control

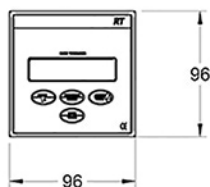


Dimensions

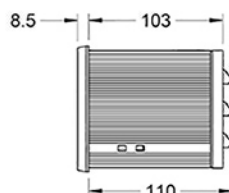
STANDARD ENCLOSURE



DIN PANEL MOUNT ENCLOSURE



CUTOUT DIMENSIONS
91mm x 91mm



Meter mount view of the OM025
Aluminium threaded meter fitted with
FEB10 batch controller

Model Coding

FLOMEC™ Panel Mount Flow Instruments									
PANEL MOUNT INSTRUMENTS (suitable for Panel or Enclosure mount)									
Model	Function (FEB10 instruments have program PIN protection)								
EB10	AC or DC powered ecobatch one or two stage batch controller with two SPDT x 5A control relays								
Electrical access									
0	Rear terminal connections, DIP switches & 8~24 Vdc source regulation.								
Flow input type									
D	Digital (pulse or frequency)								
Power supply									
1	110V AC (can also be powered by 8~24V DC)								
2	220V AC (can also be powered by 8~24V DC)								
Housing type									
PM	DIN panel mount 96 x 96 (3.8") bezel 91 x 91 (3.5") cut out, 110mm (4.3") deep								
FE	Instrument supplied fitted to an IP66 field enclosure (FE) also includes clear bezel boot								
Options									
-	S	Clear silicone bezel boot (seals entire bezel whilst maintaining touch key sensitivity)							
Model No. Example									
EB10	0	D	2	PM	-	S			

UNIVERSAL MOUNT INSTRUMENTS (suitable for wall, surface, pipe, meter or panel mounting)							
Model	Function (all instruments have program PIN protection)						
EB10	Ecobatch dc powered one or two stage batch controller						
Electrical access							
0	Cable gland supplied (BT11 totaliser only)						
1	M20 x 1.5mm (M16 x 1.5mm for Al housing)						
2	1/2" NPT female threaded conduit entry ports (not available on aluminium housing)						
5	3/4" NPT female threaded conduit entry ports (only available on Exd housing for connection to turbine meters)						
Flow input type							
D	Digital (pulse or frequency)						
Power supply							
0	Self powered (battery) or regulated 8~24Vdc - EB10 batcher needs to be externally powered						
Housing type							
FM	Universal mount (field or panel) - GRN housing						
FA	Universal mount (field or panel) - Aluminium housing						
MM	Integral meter mount - GRN housing						
MA	Integral meter mount - Aluminium housing						
* Only order MM or MA when retro fitting an instrument to OM series pulse meters							
Electrical options							
R	Control output relay board interface with two DPDT relays (RT12 & EB10 only)						
Mechanical options							
P	Facia protector - for Aluminium housing only (3mm clear polycarbonate protection plate)						
Model No. Example							
EB10	1	D	0	FA	-	R	P

Service & Warranty: For technical assistance, warranty replacment contact your FLOMEC™ distributor.
 In North or South America: 888-996-3837 / GPI.net
 Outside North or South America: +612 9540 4433 / flomec.com.au