

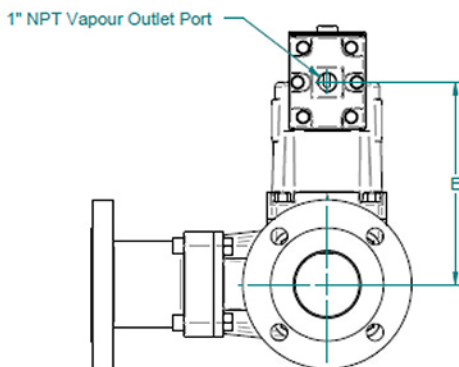
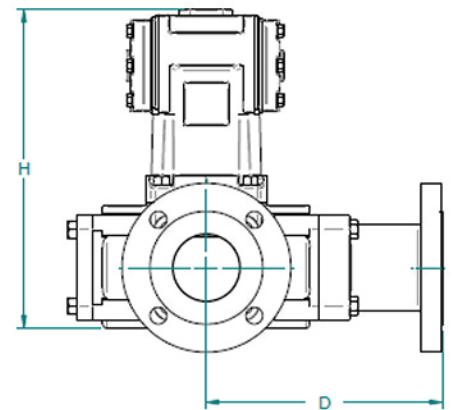
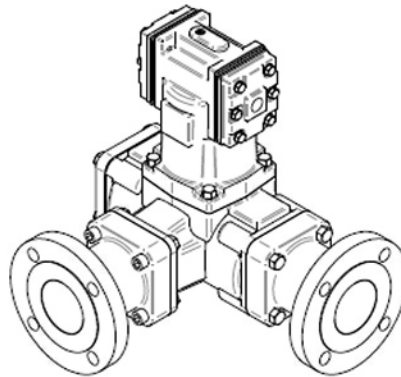
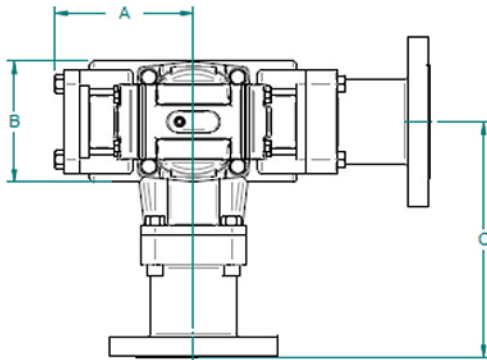
MODULAR AIR ELIMINATOR STRAINER

FLOMEC® Modular Air Eliminator Strainer is suitable for removal of entrained air and vapor bubbles from low and medium viscosity liquids, up to a limit of approximately 100cP. For removal of large air volumes from a flow stream, or for gas elimination in high viscosity liquids, please contact Flomec regarding our large capacity air separator tanks. The Eliminator Strainer can be purchased as a stand-alone or close coupled strainer unit, or as a multifunction air eliminator & strainer. As the ES assembly is modular, these two configurations are interchangeable in the field. Wafer back-pressure check valves can also be purchased for fitment between a FLOMEC® meter and the Eliminator Strainer. The back pressure check valve provides the necessary back pressure required for correct operation of the air eliminator, and ensures that the flow system cannot experience reverse flow. Back-pressure check valves should be purchased for any flow systems that do not have a minimum of 30kpa (approx. 4psi) backpressure present.

General Specifications

| | | | | | |
|----------------------------|---|-------|-------|-------|-------|
| Model prefix: | ES025 | ES040 | ES050 | ES080 | ES100 |
| Nominal Size (Inches) | 1" | 1.5" | 2" | 3" | 4" |
| Materials | aluminum body, 316SS basket, viton seals | | | | |
| Strainer mesh Sizes | 80 mesh (180 micron) | | | | |
| Maximum pressure | 10 bar (145 psig) | | | | |
| Air release head | dual port double reed valve (1" NPT Female) | | | | |
| Venting capacity @ 10 psig | 154 CFM (4.36 cubic meter/min @ 70kpa) | | | | |

Overall Dimensions



| SIZE | A | B | C | D | E | H |
|------------|-----|-----|-----|-----|-----|-----|
| 1" Flanged | 140 | 130 | 198 | 213 | 230 | 355 |
| 1" BSP | 140 | 130 | 125 | 140 | 230 | 355 |
| 2" Flanged | 140 | 130 | 198 | 213 | 230 | 355 |
| 2" BSP | 140 | 130 | 125 | 140 | 230 | 355 |
| 3" Flanged | 155 | 135 | 265 | 265 | 230 | 355 |
| 3" BSP | 155 | 135 | 160 | 160 | 230 | 355 |
| 4" Flanged | 210 | 175 | 287 | 329 | 335 | 400 |
| 4" BSP | 210 | 175 | 177 | 219 | 335 | 400 |

MODULAR AIR ELIMINATOR STRAINER

Model Coding

| | |
|-------|------------------------------------|
| ES025 | 25mm (1" process connection) |
| ES040 | 40mm (1 1/2" process connection) |
| ES050 | 50mm (2" process connection) |
| ES080 | 80mm (3" process connection) |
| ES100 | 100mm (4" process connection) |

Materials

| | |
|---|--|
| A | Aluminum body Stainless Steel screen element |
|---|--|

Mesh sizing

| | |
|---|-------------------------------------|
| 1 | Standard nominal - mesh (microns) |
|---|-------------------------------------|

Process connections

| | |
|---|--------------------------------|
| 1 | BSP female threaded |
| 2 | NPT female threaded |
| 4 | ANSI 150 RF aluminum flanges |
| 9 | Customer nominated connections |

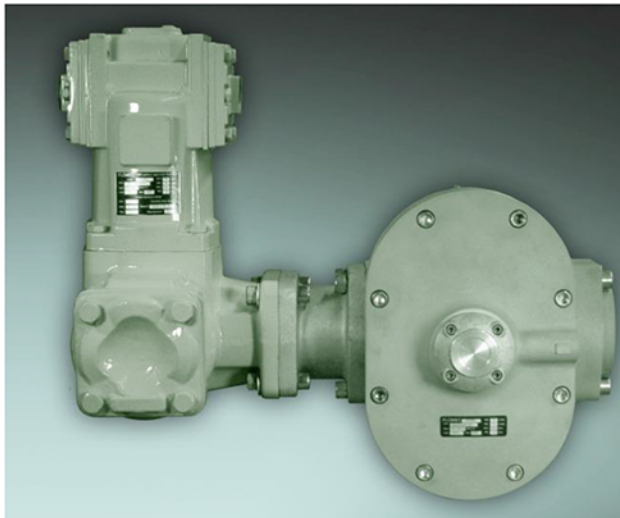
Function options

| | |
|---|--|
| 1 | Strainer only - no air eliminator mechanism |
| 2 | Strainer with integral air eliminator |
| 3 | Strainer with integral air eliminator & check valve* |

*Integral check valve only available when close coupled to flowmeter

Coupling options

| | |
|---|------------------------------------|
| - | Stand alone unit-not close coupled |
| C | Close Coupled to flow meter |



Model no. example

| | | | | | | |
|-------|---|---|---|---|--|---|
| ES080 | A | 1 | 1 | 2 | BSP fittings on inlet & outlet of strainer | |
| ES080 | A | 1 | 1 | 2 | C | BSP fitting on inlet & flow meter coupling flange on outlet |