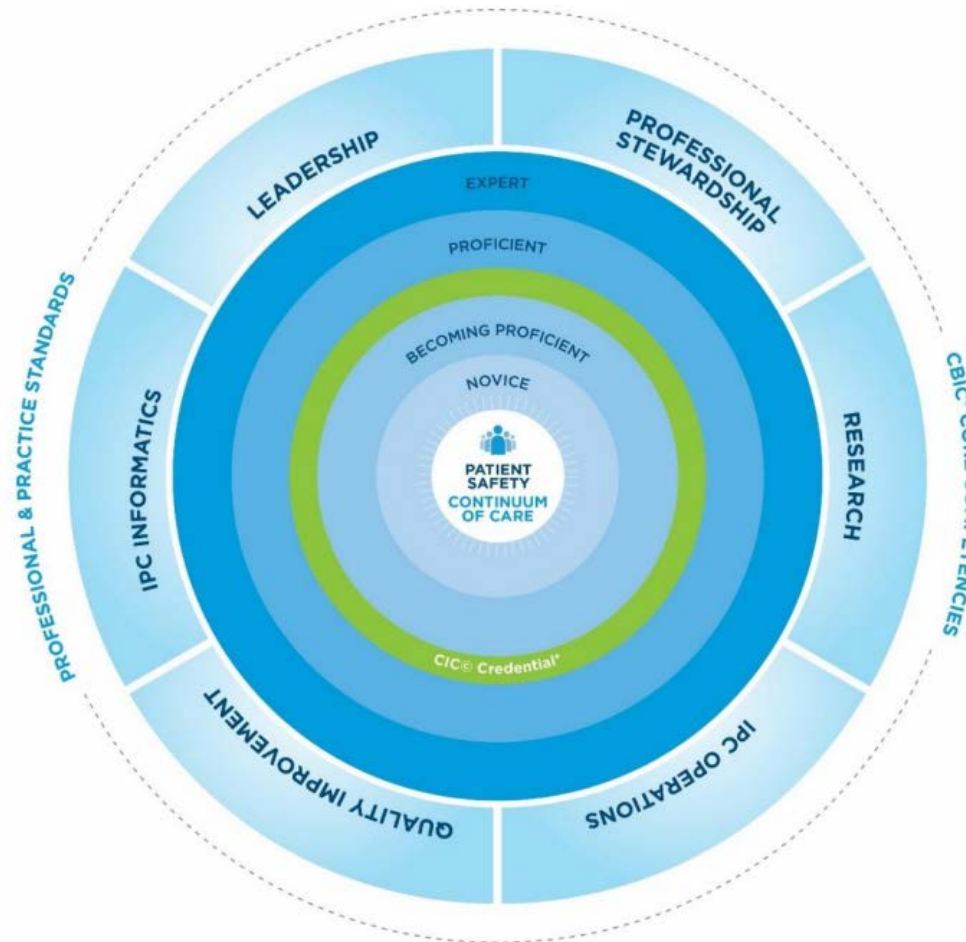


# STAR AWARD: APIC COMPETENCY MODEL CRITERIA



Applying APIC's Competency Model

<https://youtu.be/UoxO-vvVXY>

APIC Competency Model	Novice (Estimated 1-3yrs as IP)	Becoming Proficient (Estimated 3-5)	Proficient (Estimated 5-10yrs)	Expert (Estimated >10yrs)
<p><b>Domain 1: Leadership</b>            Communication            Critical Thinking            Collaboration            Behavioral Science            Program Management            Mentorship</p>	<p>Attends &gt;75% of APIC DFW chapter meetings</p>	<p>Attends &gt;75% of APIC DFW chapter meetings</p>	<p>Attends &gt;75% of APIC DFW chapter meetings</p>	<p>Attends &gt;75% of APIC DFW chapter meetings</p>
	<p>Actively works in practice setting on infection prevention and control program elements, practices and processes within healthcare facilities</p>	<p>Actively works in practice setting on infection prevention and control program elements, practices and processes within healthcare facilities</p>	<p>Actively works in practice setting on infection prevention and control program elements, practices and processes within healthcare facilities</p>	<p>*Actively works in practice setting on infection prevention and control program elements, practices, and processes within healthcare facilities AND            *Provides management oversight for healthcare facility infection prevention program</p>
		<p>Participates in a local, state, national, or international professional organization committee affiliated with infection control (e.g. APIC, AORN, TSICP, SHEA, etc.)</p>	<p>Elected or appointed to a position in a local, state, national, or international professional organization affiliated with infection control (e.g. APIC, AORN, TSICP, SHEA, etc.)</p>	<p>Elected or appointed to a position in a local, state, national, or international professional organization affiliated with infection control (e.g. APIC, AORN, TSICP, SHEA, etc.)</p>
		<p>Participates in training, planning, and mentoring staff to facilitate advancement of IPC practices.</p>	<p>Participates in training, planning, and mentoring staff to facilitate advancement of IPC practices.</p>	<p>Participates in training, planning, and mentoring staff to facilitate advancement of IPC practices.</p>
	<p>Participates in training, planning, and mentoring staff to facilitate advancement of IPC practices.</p>		<p>Actively participates in local or national APIC mentorship program</p>	

APIC Competency Model	Novice (Estimated 1-3yrs as IP)	Becoming Proficient (Estimated 3-5)	Proficient (Estimated 5-10yrs)	Expert (Estimated >10yrs)
<b>Domain 2: Professional Stewardship</b> Accountability Ethics Financial Acumen Population Health Continuum of Care Advocacy	New IP who has independently pursued professional growth through professional organization membership	IP who has independently pursued professional growth through professional organization membership	IP who has independently continued their professional growth through CIC certification	IP who has independently maintained their professional growth through CIC recertification AND Has achieved additional certifications
	Volunteers outside of work to support the local community on infection prevention practices	Volunteers outside of work to support the local community on infection prevention practices	Volunteers outside of work to support the local community on infection prevention practices	Volunteers outside of work to support the local community on infection prevention practices
		Provides a lecture or training on infection prevention and control to internal stakeholders	Provides multiple educational presentations (poster or oral abstract) at a local, state, national, or international infection control meeting	Provides multiple educational presentations (poster or oral abstract) at a local, state, national, or international infection control meeting
	Provides a lecture or training on infection prevention and control to internal stakeholders	Provides an educational presentation (poster or oral abstract) at a local, state, national, or international infection control meeting	Provides a lecture or training on infection prevention and control to internal and external stakeholders	Provides a lecture or educational class about infection prevention and control topics to a professional group or organization for continuing education contact hours or IPU's
			Serves on an IP-related panel	Serves on an IP-related panel
				Achieves advanced degree (Master's level or higher)
		Serves on an IP related panel	Actively pursuing advanced degree (Master's level or higher)	Author or Co-author of a published, professional article, chapter, or book related to infection prevention and control
				Prepares financial business case to justify or support roles or initiatives within the IPC department

APIC Competency Model	Novice (Estimated 1-3yrs as IP)	Becoming Proficient (Estimated 3-5)	Proficient (Estimated 5-10yrs)	Expert (Estimated >10yrs)
<b>Domain 3: Quality Improvement</b> Infection Preventionist as subject matter expert (SME) Performance Improvement (PI) Patient Safety Data Utilization Risk Assessment and Risk Reduction	Participates on an internal performance improvement project team related to infection prevention and control	Identifies PI opportunities and assists with facilitating a PI team among internal stakeholders	Identifies PI opportunities, assembles PI team, and champions PI projects using the organization's preferred PI tools, measures success, and disseminates lessons learned	Identifies PI opportunities, assembles PI team, and champions PI projects using organization's preferred PI tools, measures success, and disseminates lessons learned
	Provides assistance with internal risk assessments	Independently performs internal risk assessments	Independently performs risk assessments, identifies and employs strategies to reduce risk	Independently performs risk assessments, identifies and employs strategies to reduce risk
	Graphs data and generates basic reports and disseminates to internal and external stakeholders	Graphs data and generates reports and disseminates to internal and external stakeholders	Proficient in leveraging data to support IP practices	Expert in leveraging data to support IP practices
		Graphs data and generates basic reports and disseminates to internal and external stakeholders	Assists with analysis and trending of occupational exposure incidents	Leads analysis and trending of occupational exposure incidents and facilitates information exchange between occupational health and IPC department
	Develops interprofessional competencies, uses advanced PI tools/methods, and focuses on reliability and sustainability			Develops interprofessional competencies, uses advanced PI tools/methods, and focuses on reliability and sustainability
	Develops interprofessional competencies, uses advanced PI tools/methods, and focuses on reliability and sustainability		Achieves certification in PI methodologies (e.g. Lean, Six Sigma)	

APIC Competency Model	Novice (Estimated 1-3yrs as IP)	Becoming Proficient (Estimated 3-5)	Proficient (Estimated 5-10yrs)	Expert (Estimated >10yrs)
<p><b>Domain 4: Infection Prevention and Control Operation</b></p> <ul style="list-style-type: none"> <li>Epidemiology and Surveillance</li> <li>Education</li> <li>IPC rounding</li> <li>Cleaning, Disinfection, Sterilization</li> <li>Outbreak Detection and Management</li> <li>Emerging Technologies</li> <li>Antimicrobial Stewardship</li> <li>Diagnostic Stewardship</li> </ul>	<p>Provide assistance to develop a surveillance plan based on the population(s) served, services provided, and previous surveillance data.</p>	<p>Periodically evaluate the effectiveness of the surveillance plan and modify as necessary.</p>	<p>Use epidemiologic principles to conduct surveillance and investigations.</p>	<p>Incorporate information technology and systems applications into the analysis and dissemination of data.</p>
	<p>Assess the needs of customers and develop educational objectives and strategies to meet those needs.</p>	<p>Ensure requirements for communicable disease reporting are met.</p>	<p>Report epidemiologically significant findings to key stakeholders Use appropriate information technology in educational design and delivery</p>	<p>Enhance the visibility of healthcare providers and their knowledge of specific infection prevention and control practices, targets, and organizational goals</p>
	<p>Assess the needs of customers and develop educational objectives and strategies to meet those needs.</p>	<p>Collaborate in the development and delivery of educational programs and/or tools that relate to infection prevention, control, and epidemiology.</p>	<p>Use standardized definitions for the identification and classification of events, indicators/measures, and/or outcomes.</p>	<p>Critically evaluate the significance of findings and make recommendations for improvement based on those finding</p>
	<p>Assess the needs of customers and develop educational objectives and strategies to meet those needs.</p>	<p>Collaborate in the development and delivery of educational programs and/or tools that relate to infection prevention, control, and epidemiology.</p>	<p>Evaluate the effectiveness of educational programs and learner outcomes.</p>	<p>Conduct outbreak investigations. Use statistical techniques to describe the data, calculate risk-adjusted rates, and establish benchmarks.</p>

APIC Competency Model	Novice (Estimated 1-3yrs as IP)	Becoming Proficient (Estimated 3-5)	Proficient (Estimated 5-10yrs)	Expert (Estimated >10yrs)
<p><b>Domain 5: Infection Prevention and Control Informatics</b></p> <p>Surveillance Technology Electronic Medical Records (EMR) AND Electronic Data Warehouse (EDW) Data Management, Analysis, AND Visualization Application of Diagnostic Testing Data and Techniques</p>	<p>Knowledge and ability to monitor health care worker activities related to patient and provider safety (eg, hand hygiene compliance).</p>	<p>The ability to incorporate infection prevention concepts and practices in scenario simulations.</p>	<p>Use data mining and surveillance technology. Use of other technologies include capabilities for hand hygiene compliance monitoring, scenario simulations, environmental disinfection methods, and device design with the intent of reducing the risk of device-associated infections</p>	<p>The ability to use a systematic approach to evaluate costs, benefits, and effect</p>
		<p>Access to a variety of tools to aid in prevention efforts.</p>	<p>Access to a variety of tools to aid in prevention efforts.</p>	<p>The use of algorithms to identify potential HAIs or syndromes to prompt further evaluation and review.  The use of aggregate data to identify changing patterns in microbial isolates in a population.</p>



APIC Competency Model	Novice (Estimated 1-3yrs as IP)	Becoming Proficient (Estimated 3-5)	Proficient (Estimated 5-10yrs)	Expert (Estimated >10yrs)
<p><b>Domain 6: Research:</b>            Evaluation of Research            Comparative Effectiveness Research (CER)            Implementation and Dissemination Science            Conduct or Participate in Research or Evidence-Based Practice</p>	<p>Participate in critically evaluating published research and incorporate appropriate findings into practice</p>	<p>Participate in IPC-related research independently and/or collaboratively with other professions and organizations.</p>	<p>Participate in IPC-related research independently and/or collaboratively with other professions and organizations.</p>	<p>Share relevant research findings through practice, education, and/or consultation (ie, develop or revise policies, guidelines, protocols, and relevant educational modules/ strategies)</p>
		<p>Participate in critically evaluating published research and incorporate appropriate findings into practice</p>	<p>Identify sources and apply for funding when applicable.            Incorporate cost analysis into IPC research</p>	<p>Identify sources and apply for funding when applicable.            Incorporate cost analysis into IPC research</p>
		<p>Participate in critically evaluating published research and incorporate appropriate findings into practice</p>	<p>Identify sources and apply for funding when applicable.            Incorporate cost analysis into IPC research</p>	<p>Conduct research in compliance with human subject protection and the Health Insurance and Accountability Act of 1996 regulations.</p>
		<p>Participate in critically evaluating published research and incorporate appropriate findings into practice</p>	<p>Identify sources and apply for funding when applicable.            Incorporate cost analysis into IPC research</p>	<p>Publish and present research findings to assist in advancing the field</p>