



Perspective Property Inspections
 A Steel Rhino Property Inspections Affiliate
 P.O. Box 3441, Littleton CO 80161
 720-221-3669
Providing the Peace of Mind You Deserve!

This Sewer scope is intended for the express use of the purchaser. Not valid for any other recipient. Location services are for the general information and are not a guarantee of accuracy. Location should be verified by the repairing company prior to the start off any repairs. All findings are at and limited to the date and time that the scope was performed. A performed sewer scope is not a warranty or guarantee of or from future issues and findings

Client: Sample Client SClient@gmail.net (720) 555-1212	Property Address: 1005 E Sample St City, Colorado 80000	Date: <Today>
---------------------------------------------------------------------------------------------------------------	----------------------------------------------------------------------	-------------------------

Findings

Approximate Distance to Tap: 33 Feet from POE

Point of Entry (POE): Exterior Cleanout

Type of Pipe: SDR : Concrete transition at ~28'

Observations

Recommendations

Root(s) Noted:	Yes	Rooting Recommended:	Yes
Offset(s) Noted:	Yes	Jetting Recommended:	Yes
Crack(s) Noted:	No	Re-Scope Recommended:	Yes*
Break(s) Noted:	No	Repair Recommended:	Yes
Blockage(s) Noted:	No	Monitoring Recommended:	Yes
Buildup Noted:	Yes		

Grade

Video Link: Available online 90 Days and upon request for 1 year after the inspection

C

<https://www.dropbox.com/s/bl51ym85v3ui0ud/Sample%20Scope%20Video.mp4?dl=0>

Pricing

Standard Scope: \$150.00
 Additional Cost: N/A
Total: \$150.00

Comments

Minor belly between 12' and 14" where the camera was within water but not submerged.

The installation of SDR ends at the offset. Root intrusion is between the off set and the sewer tap.

Root intrusion/growth extends into the sewer tap.

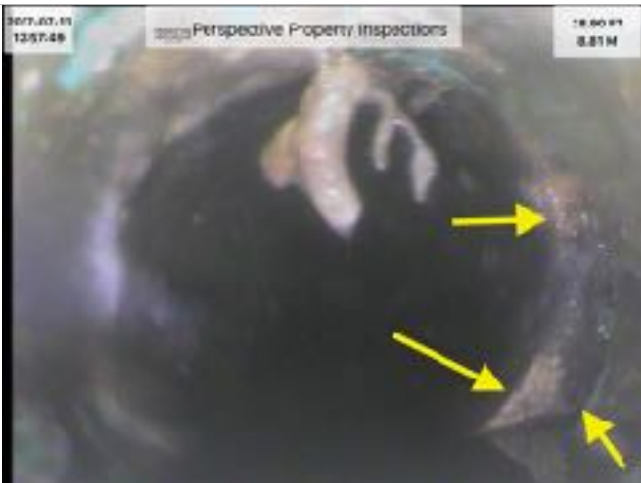
Recommend contacting a sewer line plumbing contractor to evaluate and repair the segment between the SDR/Concrete transition and the sewer tap. *Recommend re-scoping post repair and 1-2 years to monitor.



General Photo



POE



Off Set noted at transition from SDR to Concrete.



Offset ~7' - 8' deep at the at the storm curb



Surface measurements and view of off set and root intrusion



Surface view of off set.



Root Intrusion



Roots extend into the city sewer line



Approximate depth and location of sewer tap. Surface view

