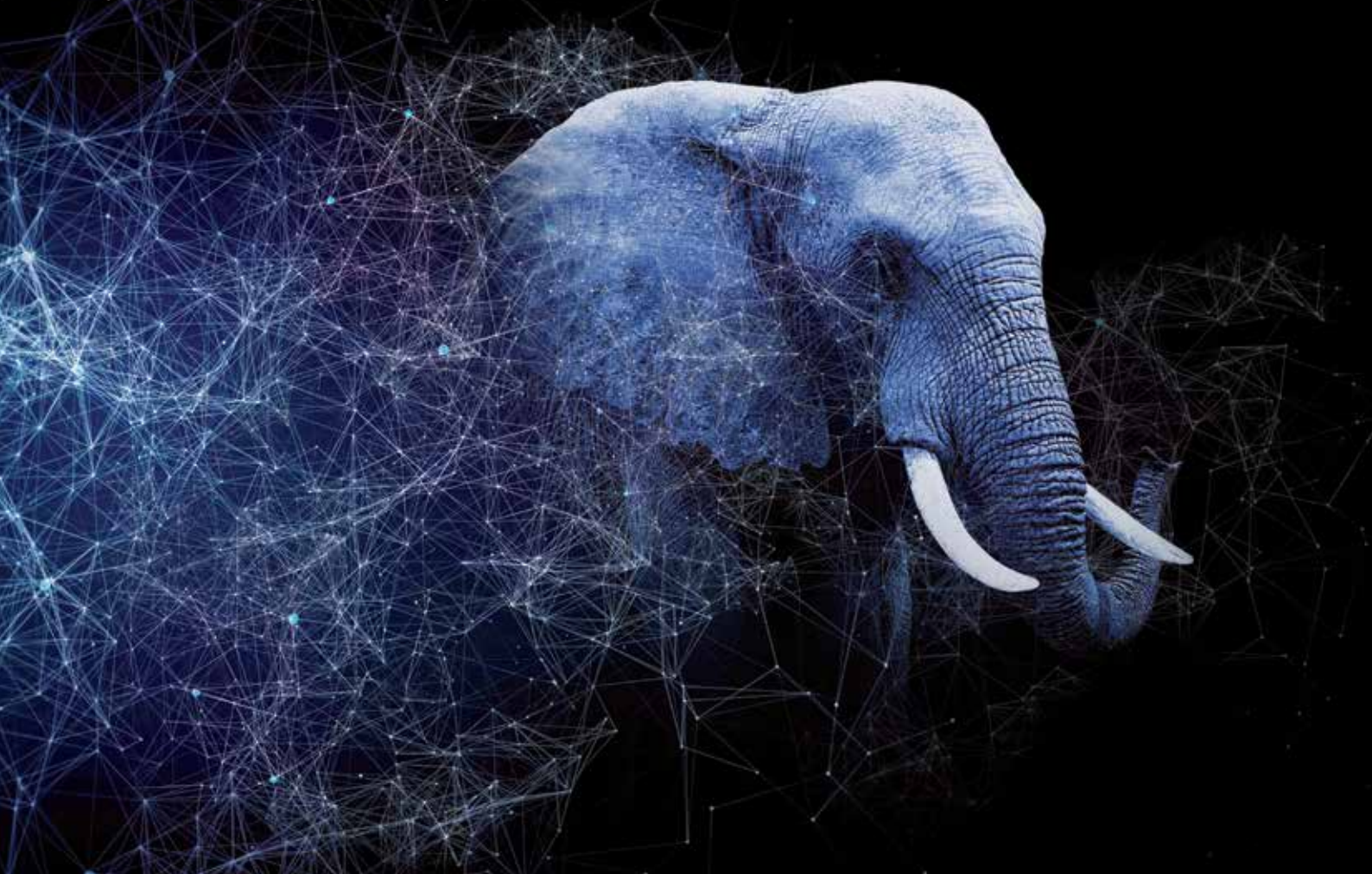




Modular and scalable camera  
that leads to infinite solutions

# INFINITE

High Frame Rate. Trigger-Less. Single Channel.



## High Frame Rate

- Up to 180 FPS continuous recording in 4K
- Up to 600 FPS continuous recording in 1080HD
- Up to 600 FPS continuous recording in 720HD

## Trigger-less

- Simply go backward without missing any action
- More than one hour of continuous non-stop loop recording
- No dedicated operator is needed

## Single Channel

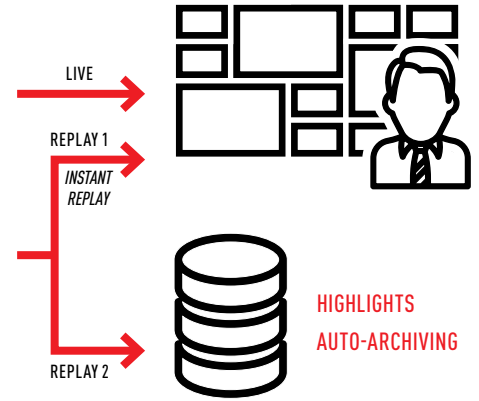
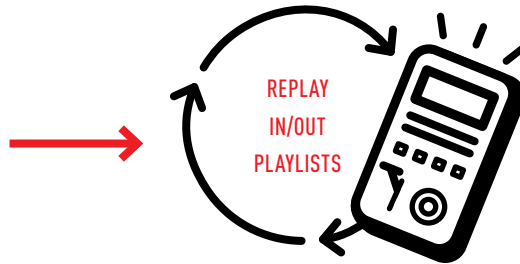
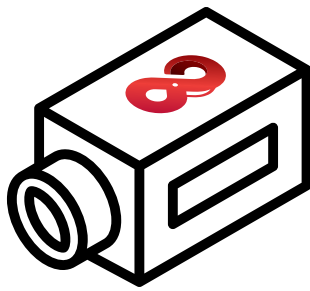
- Up to 12x Super Slow Motion using only one channel
- Space saver
- License free
- Stand-alone mode available

Based on X10 UHD and Phantom Flex 4K high-speed camera, including Extended RAW Memory Mode.

**Other configurations available: IP/Remote production, RF/Wireless mode, ASPEN technology, and many more.**

THE WORLDWIDE LEADER IN EXTREME SLOW MOTION FOR SPORTS BROADCAST  
Tel. +32 (0)65 320 450 / [info@i-movix.com](mailto:info@i-movix.com) / [www.i-movix.com](http://www.i-movix.com)

**i-movix**  
extreme slow motion



Up to 12x in HD / 3x in 4K

More than 1 hour continuous recording

Trigger-less

No action ever missed

Stunning speed ramping effect

No Dedicated Server

Single channel



## CAMERA

Latest generation 4K camera

B4, PL, F Mounts

Up to 1000 FPS in ultra slow motion mode in 4k

Up to 600 FPS real-time continuous super slow motion in 1080p60

SMPTe Fiber Optic Connection

4K Single CMOS Sensor

Red and Green Tally

Built-in Intercom

2 microphone inputs

Video returns



## OCP

Joystick Control (Iris, Black, Preview)

RGB & Master Gains

RGB & Master Pedestals

Auto White/ Black Balance

Gamma Control, Black Gamma

Standard Color Matrix

Saturation

Flare compensation

Detail enhancement

Frame Rate/Shutter Control

Setup settings (Format, Genlock, etc.)

User presets

Remote updates



## CCU

HD-SDI Live Signal

Size: 2U

10x output to the EVS XT3 live production server, with UMotion

Four video return inputs

Ethernet connection between CCU and OCP

Bi-level, tri-level Genlock

Intercom

Up to 1,000m between camera and CCU

Remote updates



## SLOW MOTION REMOTE

User-Friendly Slow Motion Remote

Easy Sequence Selection

Auto-clip to EVS server

Instant Replay

Ramping of Speed Within a Replay

Cueing System

Multi-block Management

Compatible with EVS Hypermotion Mode

## RAW NON-VERSATILE MEMORY SIZE\*

FPS	HD720	HD1080	UHD-1 4K
120	458	203	51
180	339	151	38
200	275	122	—
240	229	102	—
300	183	81	—
360	153	68	—
400	137	61	—
500	110	49	—
540	102	45	—
600	92	41	—

\*Recording times (in minutes)

## CAMERA

### GENERAL

#### PHANTOM FLEX 4K

Sensor	CMOS Sensor with 6.75µm pixel
Effective picture elements	4096 x 2304
Lens mount	B4 Mount, PL Mount, Nikon F Mount
8-inch Color Viewfinder	Sony OLED, or any HD-SDI viewfinder
Operation temperature	-20°C – +50°C
Dimensions (W x H x L)	144 x 198 x 291 mm
Weight	6,3 Kg (14lbs)

#### CAMERA BOX

Dimensions (W x H x L)	506 x 195 x 95 mm
Weight	3 Kg
Temperature	-20°C – +45°C
Mounting	Native mounting holes Heavy duty frame (optional)

### INPUT/OUTPUT CONNECTORS

Viewfinder connector	3G HD-SDI BNC
Output DC (12V/1.5A) + Tally	5-pin Hirose
Lens connector	12-pin Hirose
Hybrid fiber connector	LEMO® EDW.3K.93C.TLC / SMPTE 304 Tajimi / Fischer / Rosenberger connector (optional)

### INTERCOM - AUDIO

Head set connector	5-pin XLR (Dynamic or condenser mic)
Microphone input	2x 3-pin XLR/0 to 60dB gain/48V switchable phantom power/ maximum input level 9dBu
Volume control	ENG, PROD, PGM

### TRANSMISSION

Transmission cable	SMPTE 311 Hybrid Cable up to 1,000m
--------------------	-------------------------------------

## CAMERA CONTROL UNIT (CCU)

### GENERAL

Dimensions (W x H x D)	438 (19inch rack) x 88 (2U) x 465 mm
Weight	7 Kg (15.43 lb)
Operation temperature	0-40 degrees C (32-104 F)
Operation humidity	Max 80 % (non-condensing)

### CONNECTORS

SDI-in	4 x BNC 1ch 1.0Vp-p 75 Ω
SDI-out	6 x BNC 1ch 1.0Vp-p 75 Ω
Control data	RJ45 x 2
Tally (R, G)	Dry-contact inputs
Genlock	SD Analog Black Burst (Bi-Level) or HD Tri-Level Sync
Hybrid Fiber Connection	LEMO FMW.3k93C. SMPTE 304 Tajimi / Fischer / Rosenberger Connector (optional)

### VIDEO OUTPUT & INPUT FORMATS

Video Output & Input Formats	HD — HD-SDI 1080i 50 / 59 / 60
	HD-SDI 1080p 50 / 59 / 60
	HD-SDI 720p 50 / 59 / 60
	UHD — HD-SDI 4Kp 50 / 59 / 60

### INTERCOM - AUDIO

Line Level	+4dBu Nominal
Intercom ENG/PROD	4-wire System (Balanced)
Intercom PGM	Balanced Line Input / Maximum input level 13dBa
Microphone preamp output	2 x 3-pin XLR / Balanced line level / Maximum output level 13 dBu

### POWER

Power requirements	AC 80 V to 240V, 47 to 63 Hz
Power connector	IEC type, 3-pin male
Power consumption	280VA max. with camera

## OPERATIONAL CONTROL PANEL (OCP)

User interface	Graphical TouchScreen, Rotary Knobs
Power connector	XLR 4-pin 12 Vdc
Control Data	RJ45 / Up to 100m between CCU and OCP
Dimensions (W x H x L)	99 x 116 x 355 (323) mm
Weight	2 kg (4.41 lb)

## SLOW MOTION CONTROL (VERSION 1)

Controls	Jog, Shuttle, Buttons
Power Connector	XLR 4-pin 12 Vdc
Control Data	RJ45 / Up to 100m between CCU and slow motion remote
Dimensions (W x H x L)	164 x 80 x 255 mm
Weight	1.5 kg (3.3 lb)