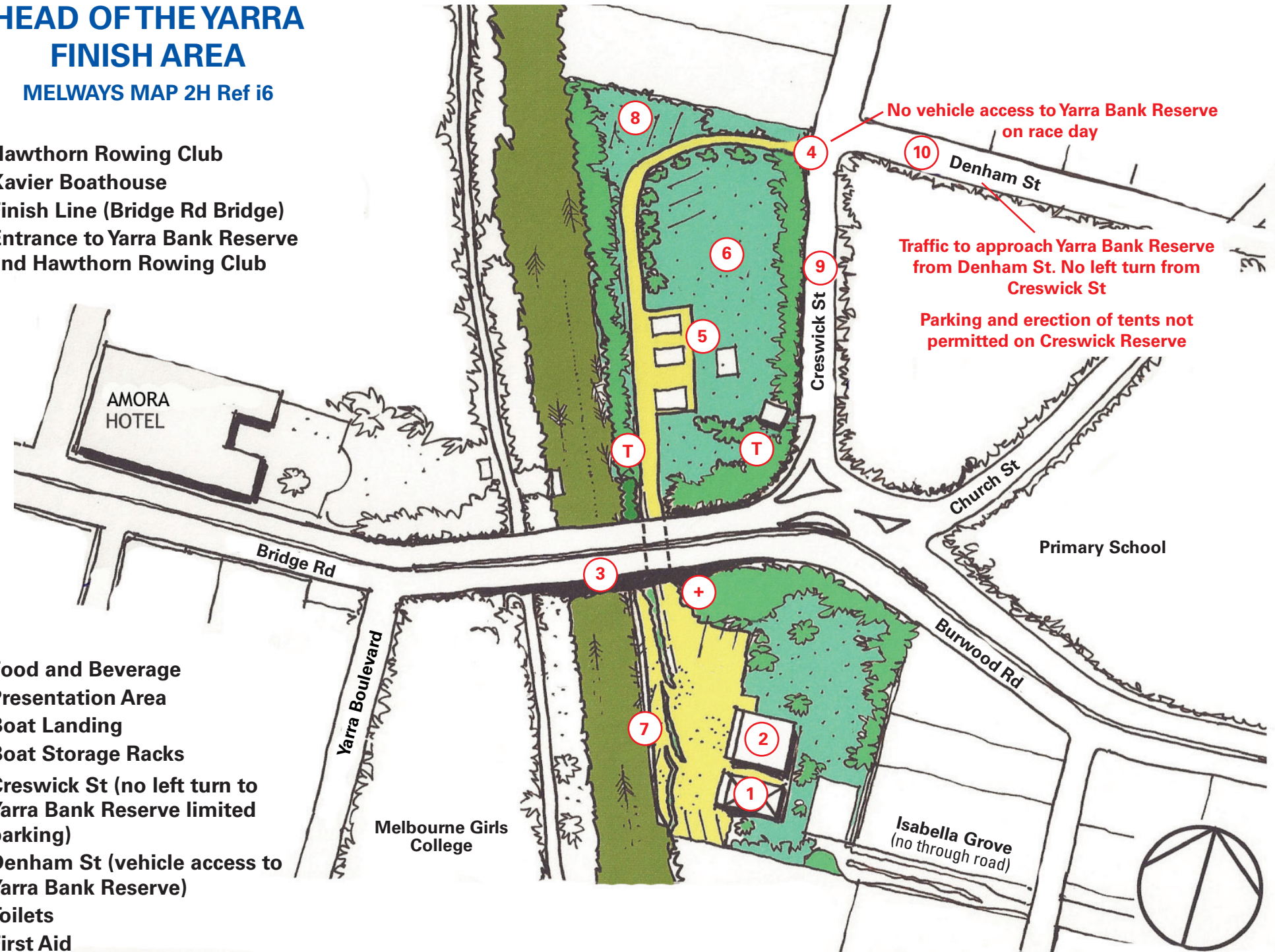


HEAD OF THE YARRA FINISH AREA

MELWAYS MAP 2H Ref i6

- 1 Hawthorn Rowing Club
- 2 Xavier Boathouse
- 3 Finish Line (Bridge Rd Bridge)
- 4 Entrance to Yarra Bank Reserve and Hawthorn Rowing Club

- 5 Food and Beverage
- 6 Presentation Area
- 7 Boat Landing
- 8 Boat Storage Racks
- 9 Creswick St (no left turn to Yarra Bank Reserve limited parking)
- 10 Denham St (vehicle access to Yarra Bank Reserve)
- T Toilets
- + First Aid



No vehicle access to Yarra Bank Reserve on race day

Traffic to approach Yarra Bank Reserve from Denham St. No left turn from Creswick St

Parking and erection of tents not permitted on Creswick Reserve