



**2016**

## **TRAFFIC MANAGEMENT AND SECURITY ARRANGEMENTS**

### **START LINE**

#### **City Security – Friday 25 November**

Hawthorn Rowing Club has appointed a uniformed security guard to patrol a specific area to protect your boats and oars. The location is to the east of Melbourne University Boat Club called Engineers Lawn.

It is imperative your boat is placed as efficiently as possible (to maximise number of boats) within this area. We implement this for competitors to minimise malicious damage caused by passers-by. Competitors continue to leave their boats at their own risk.

Competitors will need to make own arrangements in relation to trestles. Please do not store boats overnight in front of the rowing sheds.

Security in the patrolled area will occur on **Friday 25 November 8pm to 6am**

#### **BOATHOUSE DRIVE ROAD CLOSURE – Saturday 26 November**

Hawthorn Rowing Club has a permit for a ROAD CLOSURE OF BOATHOUSE DRIVE on Saturday 26 NOVEMBER from 5am to 2pm.

As such, **only** boat trailers and Head of the Yarra official vehicles will be permitted to enter the area. Please note that general vehicles will be turned away. This measure has been introduced to maintain pedestrian safety. Access to Boathouse Drive is limited for the purpose of the placement of boats and moving boats from the storage area to the water.

**Please note that this is only until 2pm after which normal traffic conditions will apply.**

Boat Trailers will be able to remain within the Boathouse Drive area as shown below during the road closure.

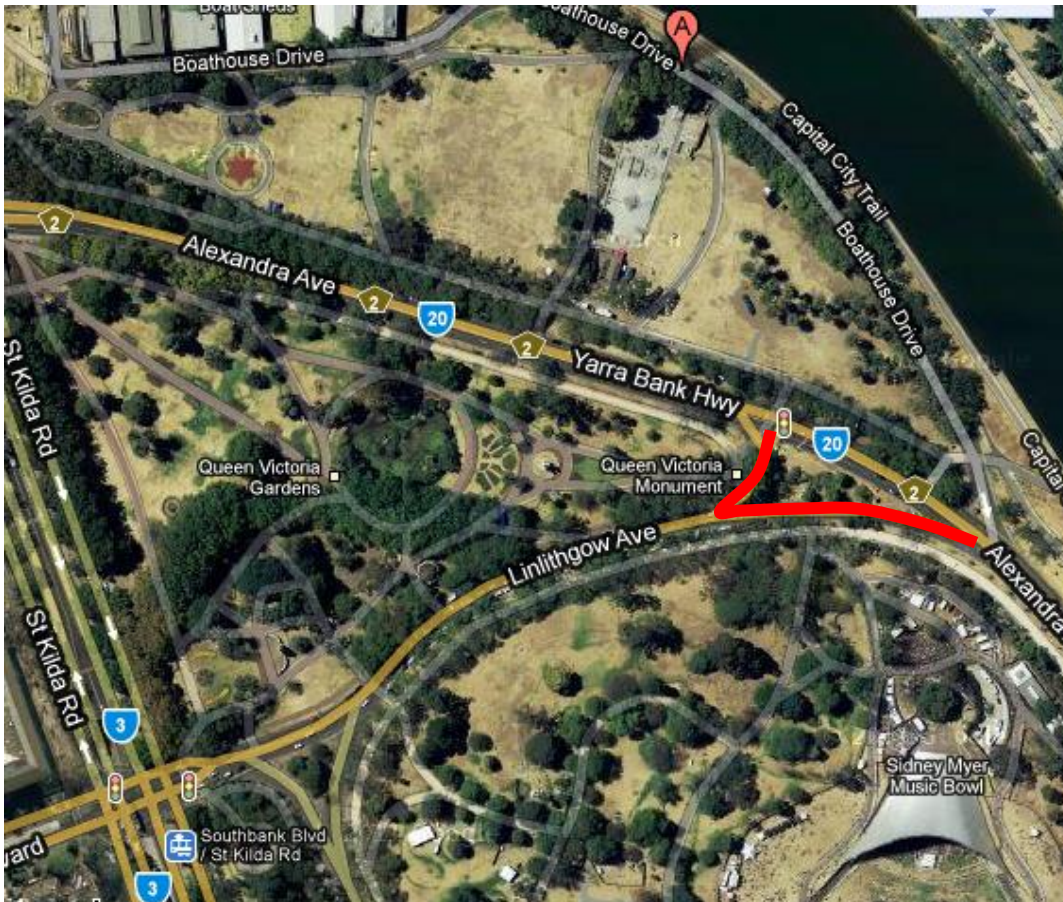
FRIDAY STORAGE AREA



photo courtesy of [www.balloonman.com.au](http://www.balloonman.com.au)



## Trailer and Vehicular access into Boathouse Drive, City



Trailers requiring access into Boathouse Drive must **ONLY** turn left into Boathouse Drive from Alexandra Avenue irrespective of which direction you are coming from.

If you are travelling from the east, you must

- Turn left into Linlithgow Avenue from Alexandra Avenue and almost immediately there is an opening to turn right back along the road towards the river.
- Stop at the traffic lights and turn right back into Alexandra Parade, then turn left into Boathouse Drive



## **FINISH AREA**

### **Hawthorn - Residential Area**

Please note that this is a residential area and whilst Hawthorn Rowing Club negotiates various road closures to facilitate through traffic of boat trailers and provide some parking, the storage of boat trailers is at a premium.

We ask for competitors continued patience and a common sense approach during peak times and to also maximise parking opportunities where available.

Please note that council does not permit the parking of boat trailers on grassed areas, particularly on Creswick Reserve, a highly regarded and manicured parkland and also along Denham Street.

New for 2016, parking of boat trailers is NO LONGER permitted to the lower park section at the entry to Creswick Street, opposite the public toilet. This will be cordoned off to remind further on days prior.

### **Creswick Street closed for trailer parking on race day**

Creswick Street between Denham Street and Bridge Road is closed on the day of the event and only to be used by Boat Trailers in the loading or unloading of boats. A traffic management team is appointed at the corner of Bridge and Creswick Streets to ensure the safety of pedestrians and temporarily parked boat trailers involved in any pick up/drop off activity.

We ask that Boat Trailers that permanently park in this area throughout the weekend park on an angle in order to maximize the number of trailers possible and not to block through access of the road.





## Finish Area



## Legend



Creswick Park Lower – NO PARKING PERMITTED



Limited Boat Trailer Parking, ensure park efficiently on angle. Road closed during event.



### No Trailer access to Yarra Bank Reserve for Early Arrivals

No vehicular access is possible to Yarra Bank Reserve from Thursday 8pm. On race day the road is used for official deliveries and emergency vehicles only.

Should you arrive prior to the security guard being rostered in position it is imperative the trailer is moved on the Friday morning by 8am as the turning circle in the parking area is required for large vehicles with race infrastructure to exit the park.

Free parking is available for Boat Trailers on a first come first serve basis on Yarra Boulevard, Richmond and on Church Street, Hawthorn.

### Hawthorn Security

Boats are encouraged to be stored in the parkland itself on trestles or supplied boat racks as there will be a security guard to patrol the grounds on the following days and times:

**Thursday - 8pm to 6am Friday**  
**Friday - 8pm to 6am Saturday**  
**Saturday - 6am to 6am Sunday**

Hawthorn Rowing Club cannot guarantee security of your equipment and you leave it in Yarra Bank Reserve at your own risk.

### Hawthorn Boat Racking

Boat Racks will be placed in the parkland on the Friday and removed on the Saturday post event. Boats that remain over the Saturday night are asked to be placed on trestles to facilitate boat rack removal.

Hawthorn Rowing Club representatives will be required to move your boat in the event that it remains on a boat rack in the clearing of the park post event.

**We hope you have a great regatta and thank you for your participation.**