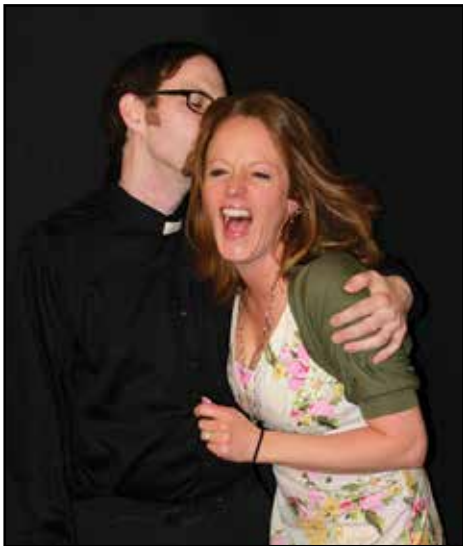




## Spring Quarterly 2014



### *AND EVERMORE SHALL BE SO*

Stone Arch concludes our "Season of Mystery" with *AND EVERMORE SHALL BE SO*, a scintillating whodunnit by Norman Robbins. When Rev. Edwin Summerfield and his wife Lydia invite their friend Brandon Walsh to visit, they discover a dark evil lurks beneath the placid façade of their small

town of Athelston. Brandon is a writer, and when he investigates the town's most notorious unsolved crime- the murder of Jason Lilywhite- some folks in town aren't too happy to have their dirty secrets exposed. Soon the only things piling up faster than the dead bodies are the shocking twists in this ruthless murder mystery that will keep you guessing to the very end!

Directed by Colette Hartzler (*GOD'S FAVORITE*), *EVERMORE* features a great cast of returning favorites and brand new faces. Playing Brandon is Richard Knouse, a new player on the SAP stage who was previously seen in State College's production of *THE NUTCRACKER* last December. Zachariah Smith (last seen in *WEB OF MURDER*) plays Edwin, and Sherri Heller, another new SAP discovery, plays Lydia. Cara Harmon (*THE PSYCHIC*) and our favorite JP Edward's waiter, Michael Armstrong, play Jason Lilywhite's grieving family.

The rest of Athelston's eccentric citizens are fleshed out by a gaggle of SAP audience favorites. We are very pleased to welcome back to the stage longtime Stone Archer Katie Long (playing town gossip Sheila Pashley). Katie sat in the director's chair for a number of shows like *CLIFFHANGER* and *THE LADIES OF THE CAMELLIAS*. Returning from our previous hit *THE GAME'S AFOOT* are Anita Rishel and Bill Daup, playing, respectively, the Summerfields' housekeeper Ida and local restaurateur Maurice Walker. Hunky heart-throb Brad Williams (*DROP DEAD*) lurks about as the Summerfields' suspicious gardener Roy, and Jill Harbst Boulanger (*WEB OF MURDER*) plays the mysterious Gwendolyn Cranshawe, who has some scandalous evidence regarding the Lilywhite case.

What IS the shocking secret of the Lillywhite Murder? Is Jason's killer still on the loose? And how does the traditional song "Green Grow the Rushes O" fit into all this? All shall be revealed in our spring production, *AND EVERMORE SHALL BE SO*!!



*Zachariah Smith, Sherri Heller, and Richard Knouse rehearse a scene from AND EVERMORE SHALL BE SO*

## Our Forty-SEVENTH Anniversary Season! 1967-2014 at the Theatre In The Park

### "AND EVERMORE SHALL BE SO"

By Norman Robbins

Comedy/Mystery, Directed by Colette Hartzler

Performances: 8:00 p.m. Fridays and Saturdays

May 16, 17, 23, 24, 30 and 31

2:00 p.m. Sundays, May 25 & June 1

### STONE ARCH PLAYERS THEATER CAMP

June 16-20

Public Performance

Friday, June 20<sup>th</sup> at 6:00 p.m.

Stone Arch Box Office: 717-248-2224

Color versions of the newsletter photos  
are available on our web site:

[www.stonearchplayers.com](http://www.stonearchplayers.com)

Look for us on

facebook



### *THE GAME'S AFOOT*

*The Cast  
and Crew of  
our runaway  
smash hit!*

### STONE ARCH PLAYERS THEATRE CAMP

Stone Arch Players are excited to announce they will be presenting their new Theater Camp for Kids, June 16 - 20! The one-week day camp will introduce 25 lucky kids, ages 6-12, to the world of theater. The kids will spend the mornings learning basic drama skills through fun exercises and activities, and each afternoon they'll rehearse their very own play which will be performed on Friday, June 20th at 6:00 pm. Camp director Julie Ufema will be aided by Assistant Director Zachariah Smith and five older students who will be interns and also perform in the climactic show. Additionally, a variety of SAP veterans will be on hand each day to teach the campers all aspects of theater, from the tech, to make up to directing. This program was made possible through assistance of a grant from the Pennsylvania Partners in the Arts, Project Stream in association with the Community Partnerships RC&D. We hope this is the start of a new annual tradition and urge everyone to attend the kid's show on Friday, June 20th at 6:00 pm at the theatre-in-the-park. Tickets are \$5.00.



Nonprofit Org.  
U.S. POSTAGE  
**PAID**  
Permit No. 48  
Lewistown, PA

RETURN SERVICE REQUESTED

STONE ARCH PLAYERS  
P.O. Box 604  
Lewistown, PA 17044



### **SPOON RIVER ANTHOLOGY**

On April 21<sup>st</sup>, 2014 an audience at the Lewistown Country Club will be treated to a reading of SPOON RIVER ANTHOLOGY, Edgar Lee Masters' collection of short free-form poems comprised of the epitaphs of the residents of a small town. Bringing to life thirty of the townfolk will be a cast of just

four Stone Archers: Our favorite sexy action hero Rob Burns (somehow finding the energy after starring in WEB OF MURDER, IT'S A WONDERFUL LIFE, and THE GAME'S AFOOT back to back); Colette Hartzler and Zachariah Smith (director and co-star, respectively, of our upcoming mystery AND EVERMORE SHALL BE SO); and, in a rare on-stage appearance, Madam President Thiry Olbrich!



### **EDITOR RETIRES**

This edition of the Stone Arch Players' newsletter ON CUE, is the final one to be written by Bill Daup. The job of newsletter editor is now being taken on by the very talented Susan Turns. Bill wrote the newsletter since July of 1988 and is retiring after twenty five years of service.

*Congratulations Susan on your new assignment!*



### **BITTERSWEET STUDIOS GOING STRONG**

Stone Arch audiences know Julie O'Conner Ufema from her performances in shows like SUITE SURRENDER and our recent hit THE GAME'S AFOOT, but outside the theater she is also an accomplished author, screenwriter and filmmaker. Last summer Julie added another credit to her ever-growing resume: professional photographer, with the opening of her new photography atelier Bittersweet Studios. Located on

N. Wayne Street in Lewistown, Julie has constructed a life-sized dollhouse/dream factory, with each room bursting with eye-popping colors and bold design choices. The Bittersweet crew also works outside the studio, covering concerts, events, weddings, and more. Bittersweet creates the official head shots and promotional photographs for Stone Arch Players, and also recently covered the wedding of Stone Archer favorites Mike Cramer and Abby Hunley. While Julie's camera captures everything from sunny family portraits to grime-caked zombies, she admits her true passion is her saucy series of boudoir photographs. "Everyone, at any age, deserves the chance to be whomever they dream of being for a day and having the images to remember that day by," explains Julie. "We want to help give them that opportunity." We here at Stone Arch hope Julie gets the opportunity to give those opportunities again and again and again!

### **STONE ARCH ON THE WEB**

Did you know the Stone Arch Players are all over the internet? For a while now Michael A. Cramer has been running ([stonearchplayers.com](http://stonearchplayers.com)), your best source for information on tickets, upcoming shows, auditions, and more. Also, the site features the full-color version of this very newsletter! If you're into social media, follow our Facebook page at ([facebook.com/StoneArchPlayers](https://facebook.com/StoneArchPlayers).) Julie O'Conner Ufema supplies it with constant updates on all our exciting projects- like our upcoming Theatre Camp (which has its own page at ([facebook.com/SAPTheatreCamp](https://facebook.com/SAPTheatreCamp))) - and much more, including hilarious photos and out-takes from our rehearsals! Or if you want something visual that's not too abysmal, you could take in our new tumblr page, ([stonearchplayers.tumblr.com](http://stonearchplayers.tumblr.com)) where "Stone Archeologist" Zachariah Smith has been posting a variety of pictures from SAP's 47 year history. "I've already found at least one photo each from over a hundred SAP shows but I need way more," says Zack. "If anyone has any pictures, programs, videos, or other memorabilia from past shows please contact me via Facebook or ([zachariahsmys@ gmail.com](mailto:zachariahsmys@ gmail.com))!" Oh, and if you're into that whole brevity thing, get SAP updates in 140 characters or less by following our Twitter page, ([twitter.com/StoneArchPlayer](https://twitter.com/StoneArchPlayer)!) Now you have no excuse not to immerse yourself in the Stone Arch Players on your PC, laptop, tablet, or mobile device!