

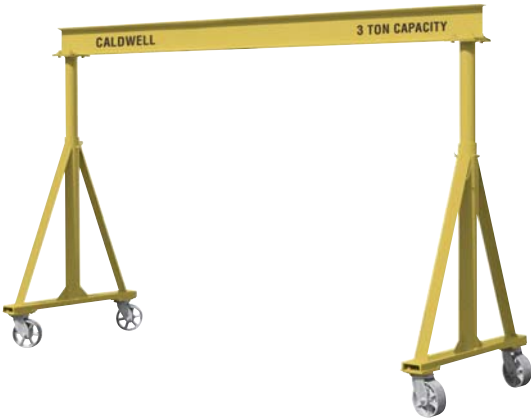
Gantry Cranes



The Caldwell Group • 800-628-4263 • www.caldwellinc.com

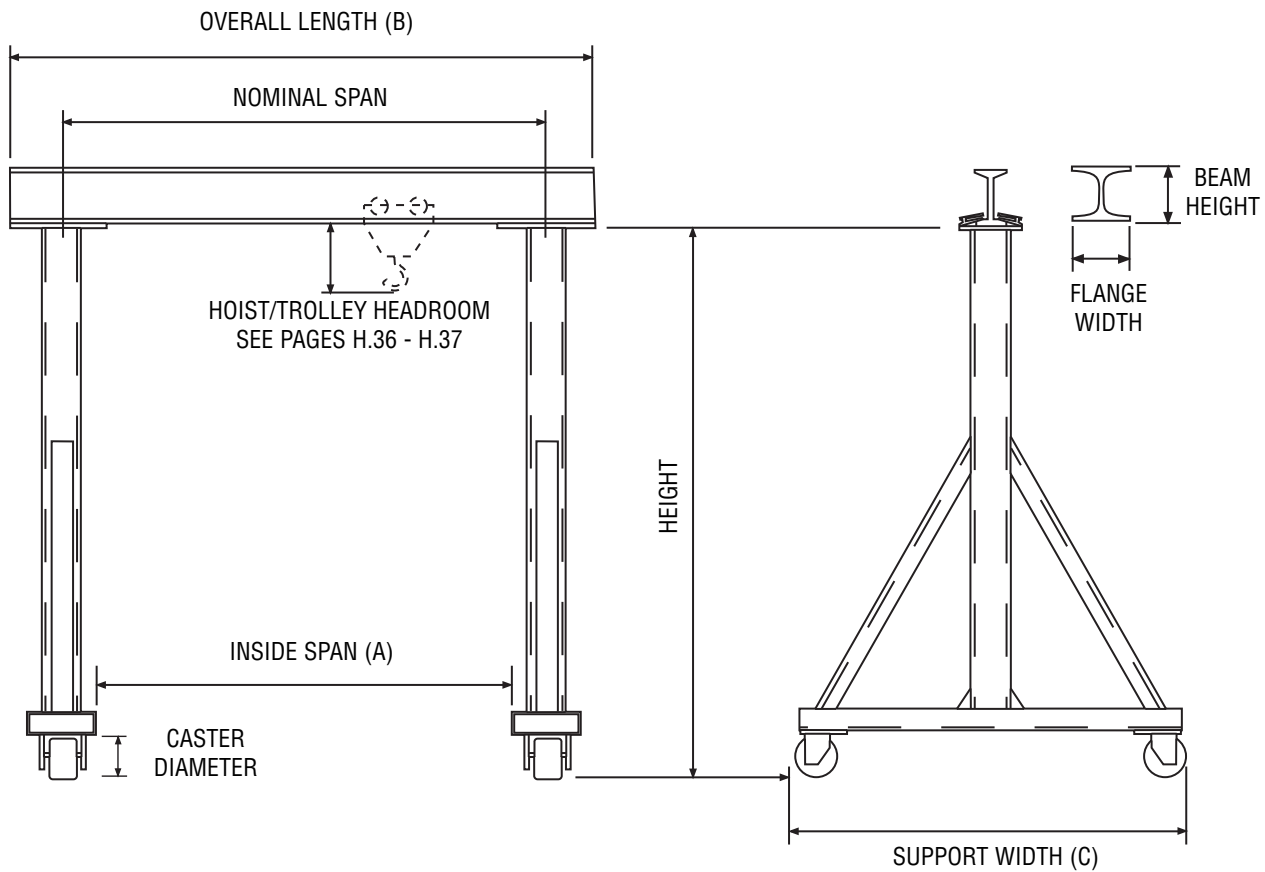
Krane-King® Section
2011-2013 Master Catalog

Model H90 - Fixed Height Gantry



PRODUCT FEATURES:

- Adjustable span standard on 10'-16' spans through 5 ton.
- Bolted connections on spans of 20'-24' and all 8 ton units.
- Heavy duty supported leg design.
- Balanced design allows for easy rolling, even under load.
- Conforms to AISC, OSHA, and CMAA specifications.
- Simple bolt together construction.
- Easy setup and maintenance.
- 4 - steel swivel casters standard.
- Assembly instructions provided.
- For our optional gantry crane features, please see page H.15.



Gantry Cranes



The Caldwell Group • 800-628-4263 • www.caldwellinc.com

Krane-King® Section
2011-2013 Master Catalog

| SPECIFICATIONS | | | Nominal Span (ft.) | | | | | |
|-------------------------|----|--------------------|--------------------|-------------|-------------|-------------|-----------------|-------------|
| 1 Ton Capacity* | | | Clamp Connection | | | | Bolt Connection | |
| | | | 10 | 12 | 14 | 16 | 20 | 24 |
| Height Under Beam (ft.) | 10 | Model Number | H90-1-10/10 | H90-1-10/12 | H90-1-10/14 | H90-1-10/16 | H90-1-10/20 | H90-1-10/24 |
| | | Inside Span (A) | 10'-4" | 12'-4" | 14'-4" | 16'-4" | 18'-6" | 22'-6" |
| | | Overall Length (B) | 11'-6" | 13'-6" | 15'-6" | 17'-6" | 21'-6" | 25'-6" |
| | | Weight (lbs.) | 825 | 930 | 967 | 1136 | 1424 | 1794 |
| | | Support Width (C) | 5'-6" | | | | | |
| | 12 | Model Number | H90-1-12/10 | H90-1-12/12 | H90-1-12/14 | H90-1-12/16 | H90-1-12/20 | H90-1-12/24 |
| | | Inside Span (A) | 10'-4" | 12'-4" | 14'-4" | 16'-4" | 18'-6" | 22'-6" |
| | | Overall Length (B) | 11'-6" | 13'-6" | 15'-6" | 17'-6" | 21'-6" | 25'-6" |
| | | Weight (lbs.) | 913 | 1018 | 1055 | 1224 | 1546 | 1916 |
| | | Support Width (C) | 6'-6" | | | | | |
| | 14 | Model Number | H90-1-14/10 | H90-1-14/12 | H90-1-14/14 | H90-1-14/16 | H90-1-14/20 | H90-1-14/24 |
| | | Inside Span (A) | 10'-4" | 12'-4" | 14'-4" | 16'-4" | 18'-6" | 22'-6" |
| | | Overall Length (B) | 11'-6" | 13'-6" | 15'-6" | 17'-6" | 21'-6" | 25'-6" |
| | | Weight (lbs.) | 977 | 1082 | 1119 | 1288 | 1667 | 2037 |
| | | Support Width (C) | 7'-6" | | | | | |
| | 16 | Model Number | H90-1-16/10 | H90-1-16/12 | H90-1-16/14 | H90-1-16/16 | H90-1-16/20 | H90-1-16/24 |
| Inside Span (A) | | 10'-4" | 12'-4" | 14'-4" | 16'-4" | 18'-6" | 22'-6" | |
| Overall Length (B) | | 11'-6" | 13'-6" | 15'-6" | 17'-6" | 21'-6" | 25'-6" | |
| Weight (lbs.) | | 1081 | 1186 | 1223 | 1392 | 1790 | 2160 | |
| Support Width (C) | | 7'-6" | | | | | | |
| Beam Height (in.) | | 6 | 8 | | 10 | | 12 | |
| Flange Width (in.) | | 3.33 | 4 | | 4.66 | | 5.25 | |
| Caster Diameter (in.) | | 6 | | | | | | |

| SPECIFICATIONS | | | Nominal Span (ft.) | | | | | |
|-------------------------|----|--------------------|--------------------|-------------|-------------|-------------|-----------------|-------------|
| 2 Ton Capacity* | | | Clamp Connection | | | | Bolt Connection | |
| | | | 10 | 12 | 14 | 16 | 20 | 24 |
| Height Under Beam (ft.) | 10 | Model Number | H90-2-10/10 | H90-2-10/12 | H90-2-10/14 | H90-2-10/16 | H90-2-10/20 | H90-2-10/24 |
| | | Inside Span (A) | 10'-4" | 12'-4" | 14'-4" | 16'-4" | 18'-6" | 22'-6" |
| | | Overall Length (B) | 11'-6" | 13'-6" | 15'-6" | 17'-6" | 21'-6" | 25'-6" |
| | | Weight (lbs.) | 949 | 986 | 1131 | 1182 | 1577 | 2016 |
| | | Support Width (C) | 5'-6" | | | | | |
| | 12 | Model Number | H90-2-12/10 | H90-2-12/12 | H90-2-12/14 | H90-2-12/16 | H90-2-12/20 | H90-2-12/24 |
| | | Inside Span (A) | 10'-4" | 12'-4" | 14'-4" | 16'-4" | 18'-6" | 22'-6" |
| | | Overall Length (B) | 11'-6" | 13'-6" | 15'-6" | 17'-6" | 21'-6" | 25'-6" |
| | | Weight (lbs.) | 1041 | 1078 | 1223 | 1274 | 1699 | 2138 |
| | | Support Width (C) | 6'-6" | | | | | |
| | 14 | Model Number | H90-2-14/10 | H90-2-14/12 | H90-2-14/14 | H90-2-14/16 | H90-2-14/20 | H90-2-14/24 |
| | | Inside Span (A) | 10'-4" | 12'-4" | 14'-4" | 16'-4" | 18'-6" | 22'-6" |
| | | Overall Length (B) | 11'-6" | 13'-6" | 15'-6" | 17'-6" | 21'-6" | 25'-6" |
| | | Weight (lbs.) | 1101 | 1138 | 1283 | 1334 | 1820 | 2259 |
| | | Support Width (C) | 7'-6" | | | | | |
| | 16 | Model Number | H90-2-16/10 | H90-2-16/12 | H90-2-16/14 | H90-2-16/16 | H90-2-16/20 | H90-2-16/24 |
| Inside Span (A) | | 10'-4" | 12'-4" | 14'-4" | 16'-4" | 18'-6" | 22'-6" | |
| Overall Length (B) | | 11'-6" | 13'-6" | 15'-6" | 17'-6" | 21'-6" | 25'-6" | |
| Weight (lbs.) | | 1205 | 1242 | 1387 | 1438 | 1943 | 2382 | |
| Support Width (C) | | 7'-6" | | | | | | |
| Beam Height (in.) | | 8 | 10 | | 12 | | 15 | |
| Flange Width (in.) | | 4 | 4.66 | | 5 | | 5.5 | |
| Caster Diameter (in.) | | 8 | | | | | | |

* Total weight of hoist and trolley not to exceed 20% of rated capacity.

Gantry Cranes



The Caldwell Group • 800-628-4263 • www.caldwellinc.com

Krane-King® Section
2011-2013 Master Catalog

| SPECIFICATIONS | | | Nominal Span (ft.) | | | | | |
|-------------------------|----|--------------------|--------------------|-------------|-------------|-------------|-----------------|-------------|
| 3 Ton Capacity* | | | Clamp Connection | | | | Bolt Connection | |
| | | | 10 | 12 | 14 | 16 | 20 | 24 |
| Height Under Beam (ft.) | 10 | Model Number | H90-3-10/10 | H90-3-10/12 | H90-3-10/14 | H90-3-10/16 | H90-3-10/20 | H90-3-10/24 |
| | | Inside Span (A) | 9'-3" | 11'-3" | 13'-3" | 15'-3" | 18'-6" | 22'-6" |
| | | Overall Length (B) | 11'-6" | 13'-6" | 15'-6" | 17'-6" | 21'-6" | 25'-6" |
| | | Weight (lbs.) | 1107 | 1157 | 1208 | 1427 | 1654 | 2016 |
| | | Support Width (C) | 5'-6" | | | | | |
| | 12 | Model Number | H90-3-12/10 | H90-3-12/12 | H90-3-12/14 | H90-3-12/16 | H90-3-12/20 | H90-3-12/24 |
| | | Inside Span (A) | 9'-3" | 11'-3" | 13'-3" | 15'-3" | 18'-6" | 22'-6" |
| | | Overall Length (B) | 11'-6" | 13'-6" | 15'-6" | 17'-6" | 21'-6" | 25'-6" |
| | | Weight (lbs.) | 1229 | 1279 | 1330 | 1529 | 1776 | 2138 |
| | | Support Width (C) | 6'-6" | | | | | |
| | 14 | Model Number | H90-3-14/10 | H90-3-14/12 | H90-3-14/14 | H90-3-14/16 | H90-3-14/20 | H90-3-14/24 |
| | | Inside Span (A) | 9'-3" | 11'-3" | 13'-3" | 15'-3" | 18'-6" | 22'-6" |
| | | Overall Length (B) | 11'-6" | 13'-6" | 15'-6" | 17'-6" | 21'-6" | 25'-6" |
| | | Weight (lbs.) | 1350 | 1400 | 1451 | 1670 | 1897 | 2259 |
| | | Support Width (C) | 7'-6" | | | | | |
| | 16 | Model Number | H90-3-16/10 | H90-3-16/12 | H90-3-16/14 | H90-3-16/16 | H90-3-16/20 | H90-3-16/24 |
| Inside Span (A) | | 9'-3" | 11'-3" | 13'-3" | 15'-3" | 18'-6" | 22'-6" | |
| Overall Length (B) | | 11'-6" | 13'-6" | 15'-6" | 17'-6" | 21'-6" | 25'-6" | |
| Weight (lbs.) | | 1473 | 1523 | 1574 | 1793 | 2020 | 2382 | |
| Support Width (C) | | 7'-6" | | | | | | |
| Beam Height (in.) | | | 10 | | 12 | | 15 | 18 |
| Flange Width (in.) | | | 4.66 | | 5 | | 5.5 | 6 |
| Caster Diameter (in.) | | | 8 | | | | | |

| SPECIFICATIONS | | | Nominal Span (ft.) | | | | | |
|-------------------------|----|--------------------|--------------------|-------------|-------------|-------------|-----------------|-------------|
| 4 Ton Capacity* | | | Clamp Connection | | | | Bolt Connection | |
| | | | 10 | 12 | 14 | 16 | 20 | 24 |
| Height Under Beam (ft.) | 10 | Model Number | H90-4-10/10 | H90-4-10/12 | H90-4-10/14 | H90-4-10/16 | H90-4-10/20 | H90-4-10/24 |
| | | Inside Span (A) | 9'-3" | 11'-3" | 13'-3" | 15'-3" | 18'-6" | 22'-6" |
| | | Overall Length (B) | 11'-6" | 13'-6" | 15'-6" | 17'-6" | 21'-6" | 25'-6" |
| | | Weight (lbs.) | 1217 | 1287 | 1357 | 1812 | 1954 | 2410 |
| | | Support Width (C) | 5'-6" | | | | | |
| | 12 | Model Number | H90-4-12/10 | H90-4-12/12 | H90-4-12/14 | H90-4-12/16 | H90-4-12/20 | H90-4-12/24 |
| | | Inside Span (A) | 9'-3" | 11'-3" | 13'-3" | 15'-3" | 18'-6" | 22'-6" |
| | | Overall Length (B) | 11'-6" | 13'-6" | 15'-6" | 17'-6" | 21'-6" | 25'-6" |
| | | Weight (lbs.) | 1339 | 1409 | 1479 | 1934 | 2076 | 2532 |
| | | Support Width (C) | 6'-6" | | | | | |
| | 14 | Model Number | H90-4-14/10 | H90-4-14/12 | H90-4-14/14 | H90-4-14/16 | H90-4-14/20 | H90-4-14/24 |
| | | Inside Span (A) | 9'-3" | 11'-3" | 13'-3" | 15'-3" | 18'-6" | 22'-6" |
| | | Overall Length (B) | 11'-6" | 13'-6" | 15'-6" | 17'-6" | 21'-6" | 25'-6" |
| | | Weight (lbs.) | 1460 | 1530 | 1600 | 2055 | 2197 | 2653 |
| | | Support Width (C) | 7'-6" | | | | | |
| | 16 | Model Number | H90-4-16/10 | H90-4-16/12 | H90-4-16/14 | H90-4-16/16 | H90-4-16/20 | H90-4-16/24 |
| Inside Span (A) | | 9'-3" | 11'-3" | 13'-3" | 15'-3" | 18'-6" | 22'-6" | |
| Overall Length (B) | | 11'-6" | 13'-6" | 15'-6" | 17'-6" | 21'-6" | 25'-6" | |
| Weight (lbs.) | | 1583 | 1653 | 1723 | 2178 | 2320 | 2776 | |
| Support Width (C) | | 7'-6" | | | | | | |
| Beam Height (in.) | | | 10 | 12 | | 15 | | 18 |
| Flange Width (in.) | | | 4.66 | 5 | | 5.5 | | 6.0 |
| Caster Diameter (in.) | | | 8 | | | | | |

* Total weight of hoist and trolley not to exceed 20% of rated capacity.

Gantry Cranes



The Caldwell Group • 800-628-4263 • www.caldwellinc.com

Krane-King® Section
2011-2013 Master Catalog

| SPECIFICATIONS | | | Nominal Span (ft.) | | | | | |
|-------------------------|----|--------------------|--------------------|-------------|-----------------|-------------|-------------|-------------|
| 5 Ton Capacity* | | | Clamp Connection | | Bolt Connection | | | |
| | | | 10 | 12 | 14 | 16 | 20 | 24 |
| Height Under Beam (ft.) | 10 | Model Number | H90-5-10/10 | H90-5-10/12 | H90-5-10/14 | H90-5-10/16 | H90-5-10/20 | H90-5-10/24 |
| | | Inside Span (A) | 9'-3" | 11'-3" | 13'-3" | 15'-3" | 18'-6" | 22'-6" |
| | | Overall Length (B) | 11'-6" | 13'-6" | 15'-6" | 17'-6" | 21'-6" | 25'-6" |
| | | Weight (lbs.) | 1397 | 1467 | 1537 | 1992 | 2607 | 3063 |
| | | Support Width (C) | 5'-6" | | | | | |
| | 12 | Model Number | H90-5-12/10 | H90-5-12/12 | H90-5-12/14 | H90-5-12/16 | H90-5-12/20 | H90-5-12/24 |
| | | Inside Span (A) | 9'-3" | 11'-3" | 13'-3" | 15'-3" | 18'-6" | 22'-6" |
| | | Overall Length (B) | 11'-6" | 13'-6" | 15'-6" | 17'-6" | 21'-6" | 25'-6" |
| | | Weight (lbs.) | 1519 | 1589 | 1659 | 2114 | 2803 | 3259 |
| | | Support Width (C) | 6'-6" | | | | | |
| | 14 | Model Number | H90-5-14/10 | H90-5-14/12 | H90-5-14/14 | H90-5-14/16 | H90-5-14/20 | H90-5-14/24 |
| | | Inside Span (A) | 9'-3" | 11'-3" | 13'-3" | 15'-3" | 18'-6" | 22'-6" |
| | | Overall Length (B) | 11'-6" | 13'-6" | 15'-6" | 17'-6" | 21'-6" | 25'-6" |
| | | Weight (lbs.) | 1640 | 1710 | 1780 | 2235 | 2997 | 3463 |
| | | Support Width (C) | 7'-6" | | | | | |
| | 16 | Model Number | H90-5-16/10 | H90-5-16/12 | H90-5-16/14 | H90-5-16/16 | H90-5-16/20 | H90-5-16/24 |
| Inside Span (A) | | 9'-3" | 11'-3" | 13'-3" | 15'-3" | 18'-6" | 22'-6" | |
| Overall Length (B) | | 11'-6" | 13'-6" | 15'-6" | 17'-6" | 21'-6" | 25'-6" | |
| Weight (lbs.) | | 1763 | 1833 | 1903 | 2358 | 3192 | 3648 | |
| Support Width (C) | | 7'-6" | | | | | | |
| Beam Height (in.) | | | 12 | | 15 | | 18 | |
| Flange Width (in.) | | | 5 | | 5.5 | | 6.0 | |
| Caster Diameter (in.) | | | 8 | | | | | |

| SPECIFICATIONS | | | Nominal Span (ft.) | | | | | |
|-------------------------|----|--------------------|--------------------|-------------|-------------|-------------|-------------|-------------|
| 8 Ton Capacity* | | | Bolt Connection | | | | | |
| | | | 10 | 12 | 14 | 16 | 20 | 24 |
| Height Under Beam (ft.) | 10 | Model Number | H90-8-10/10 | H90-8-10/12 | H90-8-10/14 | H90-8-10/16 | H90-8-10/20 | H90-8-10/24 |
| | | Inside Span (A) | 8'-6" | 10'-6" | 12'-6" | 14'-6" | 18'-6" | 22'-6" |
| | | Overall Length (B) | 11'-6" | 13'-6" | 15'-6" | 17'-6" | 21'-6" | 25'-6" |
| | | Weight (lbs.) | 2019 | 2115 | 2211 | 2395 | 2835 | 3287 |
| | | Support Width (C) | 5'-6" | | | | | |
| | 12 | Model Number | H90-8-12/10 | H90-8-12/12 | H90-8-12/14 | H90-8-12/16 | H90-8-12/20 | H90-8-12/24 |
| | | Inside Span (A) | 8'-6" | 10'-6" | 12'-6" | 14'-6" | 18'-6" | 22'-6" |
| | | Overall Length (B) | 11'-6" | 13'-6" | 15'-6" | 17'-6" | 21'-6" | 25'-6" |
| | | Weight (lbs.) | 2215 | 2311 | 2407 | 2591 | 3036 | 3483 |
| | | Support Width (C) | 6'-6" | | | | | |
| | 14 | Model Number | H90-8-14/10 | H90-8-14/12 | H90-8-14/14 | H90-8-14/16 | H90-8-14/20 | H90-8-14/24 |
| | | Inside Span (A) | 8'-6" | 10'-6" | 12'-6" | 14'-6" | 18'-6" | 22'-6" |
| | | Overall Length (B) | 11'-6" | 13'-6" | 15'-6" | 17'-6" | 21'-6" | 25'-6" |
| | | Weight (lbs.) | 2409 | 2505 | 2601 | 2785 | 3225 | 3677 |
| | | Support Width (C) | 7'-6" | | | | | |
| | 16 | Model Number | H90-8-16/10 | H90-8-16/12 | H90-8-16/14 | H90-8-16/16 | H90-8-16/20 | H90-8-16/24 |
| Inside Span (A) | | 8'-6" | 10'-6" | 12'-6" | 14'-6" | 18'-6" | 22'-6" | |
| Overall Length (B) | | 11'-6" | 13'-6" | 15'-6" | 17'-6" | 21'-6" | 25'-6" | |
| Weight (lbs.) | | 2604 | 2700 | 2796 | 2980 | 3420 | 3872 | |
| Support Width (C) | | 7'-6" | | | | | | |
| Beam Height (in.) | | | 18 | | 16.43-W | | 18.35-W | |
| Flange Width (in.) | | | 6.0 | | 7.12 | | 7.59 | |
| Caster Diameter (in.) | | | 8 | | | | | |

* Total weight of hoist and trolley not to exceed 20% of rated capacity.