

Gantry Cranes

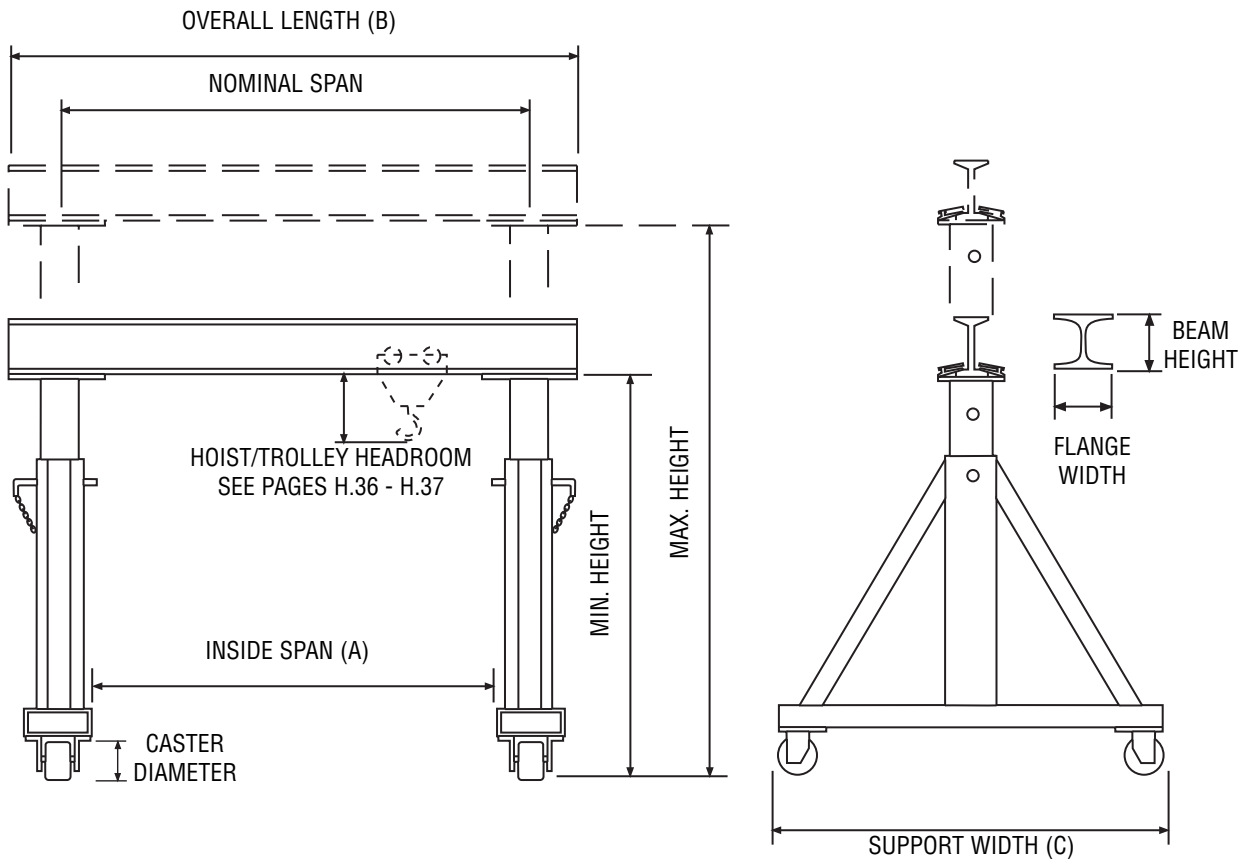
Model K90 - Adjustable Height & Span Gantry



**QUICKSHIP
PROGRAM**

PRODUCT FEATURES:

- Adjustable span standard on 10'-16' spans through 5 ton.
- Bolted connections on spans of 20'-24' and all 8 ton units.
- Heavy duty supported leg design.
- Balanced designed allows for easy maneuvering, even under load.
- Conforms to AISC, OSHA and CMAA specifications.
- Simple bolted construction.
- Easy set up and maintenance.
- 4-steel swivel casters standard.
- Height & span adjustability.
- Height adjustable down from maximum in 12" increments.
- For our optional gantry crane features, please see page H.15.



The Caldwell Group • 800-628-4263 • www.caldwellinc.com

Krane-King® Section
2011-2013 Master Catalog

Gantry Cranes



The Caldwell Group • 800-628-4263 • www.caldwellinc.com

Krane-King® Section
2011-2013 Master Catalog

Model K90-1 - 1 Ton Capacity



SPECIFICATIONS			Nominal Span (ft.)					
			Clamp Connection				Bolt Connection	
1 Ton Capacity*			10	12	14	16	20	24
Maximum Height Under Beam (ft.)	7	Model Number	K90-1-7/10	K90-1-7/12	K90-1-7/14	K90-1-7/16	K90-1-7/20	K90-1-7/24
		Inside Span (A)	10'-4"	12'-4"	14'-4"	16'-4"	18'-6"	22'-6"
		Overall Length (B)	11'-6"	13'-6"	15'-6"	17'-6"	21'-6"	25'-6"
		Weight (lbs.)	704	809	846	1015	1294	1664
		Minimum Height	4'-11"				5'-5"	
		Support Width (C)	4'-0"					
	9	Model Number	K90-1-9/10	K90-1-9/12	K90-1-9/14	K90-1-9/16	K90-1-9/20	K90-1-9/24
		Inside Span (A)	10'-4"	12'-4"	14'-4"	16'-4"	18'-6"	22'-6"
		Overall Length (B)	11'-6"	13'-6"	15'-6"	17'-6"	21'-6"	25'-6"
		Weight (lbs.)	802	907	944	1113	1408	1778
		Minimum Height	5'-11"				6'-5"	
		Support Width (C)	5'-0"					
	10	Model Number	K90-1-10/10	K90-1-10/12	K90-1-10/14	K90-1-10/16	K90-1-10/20	K90-1-10/24
		Inside Span (A)	10'-4"	12'-4"	14'-4"	16'-4"	18'-6"	22'-6"
		Overall Length (B)	11'-6"	13'-6"	15'-6"	17'-6"	21'-6"	25'-6"
		Weight (lbs.)	847	952	989	1158	1482	1852
		Minimum Height	6'-5"				6'-11"	
		Support Width (C)	5'-6"					
	12	Model Number	K90-1-12/10	K90-1-12/12	K90-1-12/14	K90-1-12/16	K90-1-12/20	K90-1-12/24
		Inside Span (A)	10'-4"	12'-4"	14'-4"	16'-4"	18'-6"	22'-6"
		Overall Length (B)	11'-6"	13'-6"	15'-6"	17'-6"	21'-6"	25'-6"
		Weight (lbs.)	944	1049	1086	1225	1609	1979
		Minimum Height	7'-5"				7'-11"	
		Support Width (C)	6'-6"					
	14	Model Number	K90-1-14/10	K90-1-14/12	K90-1-14/14	K90-1-14/16	K90-1-14/20	K90-1-14/24
		Inside Span (A)	10'-4"	12'-4"	14'-4"	16'-4"	18'-6"	22'-6"
		Overall Length (B)	11'-6"	13'-6"	15'-6"	17'-6"	21'-6"	25'-6"
		Weight (lbs.)	1028	1133	1170	1339	1733	2103
Minimum Height		8'-5"				8'-11"		
Support Width (C)		7'-6"						
16	Model Number	K90-1-16/10	K90-1-16/12	K90-1-16/14	K90-1-16/16	K90-1-16/20	K90-1-16/24	
	Inside Span (A)	10'-4"	12'-4"	14'-4"	16'-4"	18'-6"	22'-6"	
	Overall Length (B)	11'-6"	13'-6"	15'-6"	17'-6"	21'-6"	25'-6"	
	Weight (lbs.)	1132	1237	1274	1443	1860	2230	
	Minimum Height	10'-5"				10'-11"		
	Support Width (C)	7'-6"						
Beam Height (in.)			6		8		10	
Flange Width (in.)			3.33		4		4.66	
Caster Diameter (in.)			6		8			

* Total weight of hoist and trolley not to exceed 20% of rated capacity.

Gantry Cranes

Model K90-2 - 2 Ton Capacity



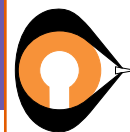
The Caldwell Group • 800-628-4263 • www.caldwellinc.com

Krane-King® Section
2011-2013 Master Catalog

SPECIFICATIONS		Nominal Span (ft.)						
		Clamp Connection				Bolt Connection		
2 Ton Capacity*		10	12	14	16	20	24	
Maximum Height Under Beam (ft.)	7	Model Number	K90-2-7/10	K90-2-7/12	K90-2-7/14	K90-2-7/16	K90-2-7/20	K90-2-7/24
		Inside Span (A)	10'-4"	12'-4"	14'-4"	16'-4"	18'-6"	22'-6"
		Overall Length (B)	11'-6"	13'-6"	15'-6"	17'-6"	21'-6"	25'-6"
		Weight (lbs.)	828	865	1010	1061	1447	1886
		Minimum Height	5'-2"				5'-5"	
		Support Width (C)	4'-0"					
	9	Model Number	K90-2-9/10	K90-2-9/12	K90-2-9/14	K90-2-9/16	K90-2-9/20	K90-2-9/24
		Inside Span (A)	10'-4"	12'-4"	14'-4"	16'-4"	18'-6"	22'-6"
		Overall Length (B)	11'-6"	13'-6"	15'-6"	17'-6"	21'-6"	25'-6"
		Weight (lbs.)	926	963	1108	1159	1561	2000
		Minimum Height	6'-2"				6'-5"	
		Support Width (C)	5'-0"					
	10	Model Number	K90-2-10/10	K90-2-10/12	K90-2-10/14	K90-2-10/16	K90-2-10/20	K90-2-10/24
		Inside Span (A)	10'-4"	12'-4"	14'-4"	16'-4"	18'-6"	22'-6"
		Overall Length (B)	11'-6"	13'-6"	15'-6"	17'-6"	21'-6"	25'-6"
		Weight (lbs.)	971	1008	1153	1204	1635	2074
		Minimum Height	6'-8"				6'-11"	
		Support Width (C)	5'-6"					
	12	Model Number	K90-2-12/10	K90-2-12/12	K90-2-12/14	K90-2-12/16	K90-2-12/20	K90-2-12/24
		Inside Span (A)	10'-4"	12'-4"	14'-4"	16'-4"	18'-6"	22'-6"
		Overall Length (B)	11'-6"	13'-6"	15'-6"	17'-6"	21'-6"	25'-6"
		Weight (lbs.)	1068	1105	1250	1301	1762	2201
		Minimum Height	7'-8"				7'-11"	
		Support Width (C)	6'-6"					
14	Model Number	K90-2-14/10	K90-2-14/12	K90-2-14/14	K90-2-14/16	K90-2-14/20	K90-2-14/24	
	Inside Span (A)	10'-4"	12'-4"	14'-4"	16'-4"	18'-6"	22'-6"	
	Overall Length (B)	11'-6"	13'-6"	15'-6"	17'-6"	21'-6"	25'-6"	
	Weight (lbs.)	1152	1189	1334	1385	1886	2325	
	Minimum Height	8'-8"				8'-11"		
	Support Width (C)	7'-6"						
16	Model Number	K90-2-16/10	K90-2-16/12	K90-2-16/14	K90-2-16/16	K90-2-16/20	K90-2-16/24	
	Inside Span (A)	10'-4"	12'-4"	14'-4"	16'-4"	18'-6"	22'-6"	
	Overall Length (B)	11'-6"	13'-6"	15'-6"	17'-6"	21'-6"	25'-6"	
	Weight (lbs.)	1256	1293	1438	1489	2013	2452	
	Minimum Height	10'-8"				10'-11"		
	Support Width (C)	7'-6"						
Beam Height (in.)		8			10		12	15
Flange Width (in.)		4			4.66		5	5.5
Caster Diameter (in.)		8						

* Total weight of hoist and trolley not to exceed 20% of rated capacity.

Gantry Cranes



The Caldwell Group • 800-628-4263 • www.caldwellinc.com

Krane-King® Section
2011-2013 Master Catalog

Model K90-3 - 3 Ton Capacity



SPECIFICATIONS		Nominal Span (ft.)						
		Clamp Connection				Bolt Connection		
3 Ton Capacity*		10	12	14	16	20	24	
Maximum Height Under Beam (ft.)	7	Model Number	K90-3-7/10	K90-3-7/12	K90-3-7/14	K90-3-7/16	K90-3-7/20	K90-3-7/24
		Inside Span (A)	9'-3"	11'-3"	13'-3"	15'-3"	18'-6"	22'-6"
		Overall Length (B)	11'-6"	13'-6"	15'-6"	17'-6"	21'-6"	25'-6"
		Weight (lbs.)	977	1027	1078	1297	1524	1886
		Minimum Height	5'-5"					
		Support Width (C)	4'-0"					
	9	Model Number	K90-3-9/10	K90-3-9/12	K90-3-9/14	K90-3-9/16	K90-3-9/20	K90-3-9/24
		Inside Span (A)	9'-3"	11'-3"	13'-3"	15'-3"	18'-6"	22'-6"
		Overall Length (B)	11'-6"	13'-6"	15'-6"	17'-6"	21'-6"	25'-6"
		Weight (lbs.)	1091	1141	1192	1411	1638	2000
		Minimum Height	6'-5"					
		Support Width (C)	5'-0"					
	10	Model Number	K90-3-10/10	K90-3-10/12	K90-3-10/14	K90-3-10/16	K90-3-10/20	K90-3-10/24
		Inside Span (A)	9'-3"	11'-3"	13'-3"	15'-3"	18'-6"	22'-6"
		Overall Length (B)	11'-6"	13'-6"	15'-6"	17'-6"	21'-6"	25'-6"
		Weight (lbs.)	1165	1215	1266	1485	1712	2074
		Minimum Height	6'-11"					
		Support Width (C)	5'-6"					
	12	Model Number	K90-3-12/10	K90-3-12/12	K90-3-12/14	K90-3-12/16	K90-3-12/20	K90-3-12/24
		Inside Span (A)	9'-3"	11'-3"	13'-3"	15'-3"	18'-6"	22'-6"
		Overall Length (B)	11'-6"	13'-6"	15'-6"	17'-6"	21'-6"	25'-6"
		Weight (lbs.)	1292	1342	1393	1612	1839	2201
		Minimum Height	7'-11"					
		Support Width (C)	6'-6"					
14	Model Number	K90-3-14/10	K90-3-14/12	K90-3-14/14	K90-3-14/16	K90-3-14/20	K90-3-14/24	
	Inside Span (A)	9'-3"	11'-3"	13'-3"	15'-3"	18'-6"	22'-6"	
	Overall Length (B)	11'-6"	13'-6"	15'-6"	17'-6"	21'-6"	25'-6"	
	Weight (lbs.)	1416	1466	1517	1736	1963	2325	
	Minimum Height	8'-11"						
	Support Width (C)	7'-6"						
16	Model Number	K90-3-16/10	K90-3-16/12	K90-3-16/14	K90-3-16/16	K90-3-16/20	K90-3-16/24	
	Inside Span (A)	9'-3"	11'-3"	13'-3"	15'-3"	18'-6"	22'-6"	
	Overall Length (B)	11'-6"	13'-6"	15'-6"	17'-6"	21'-6"	25'-6"	
	Weight (lbs.)	1543	1593	1644	1863	2090	2452	
	Minimum Height	10'-11"						
	Support Width (C)	7'-6"						
Beam Height (in.)		10			12		15	18
Flange Width (in.)		4.66			5		5.5	6
Caster Diameter (in.)		8						

* Total weight of hoist and trolley not to exceed 20% of rated capacity.

Gantry Cranes

Model K90-4 - 4 Ton Capacity



The Caldwell Group • 800-628-4263 • www.caldwellinc.com

Krane-King® Section
2011-2013 Master Catalog

SPECIFICATIONS			Nominal Span (ft.)					
			Clamp Connection				Bolt Connection	
4 Ton Capacity*			10	12	14	16	20	24
Maximum Height Under Beam (ft.)	7	Model Number	K90-4-7/10	K90-4-7/12	K90-4-7/14	K90-4-7/16	K90-4-7/20	K90-4-7/24
		Inside Span (A)	9'-3"	11'-3"	13'-3"	15'-3"	18'-6"	22'-6"
		Overall Length (B)	11'-6"	13'-6"	15'-6"	17'-6"	21'-6"	25'-6"
		Weight (lbs.)	1087	1157	1227	1682	1824	2280
		Minimum Height	5'-5"					
		Support Width (C)	4'-0"					
	9	Model Number	K90-4-9/10	K90-4-9/12	K90-4-9/14	K90-4-9/16	K90-4-9/20	K90-4-9/24
		Inside Span (A)	9'-3"	11'-3"	13'-3"	15'-3"	18'-6"	22'-6"
		Overall Length (B)	11'-6"	13'-6"	15'-6"	17'-6"	21'-6"	25'-6"
		Weight (lbs.)	1201	1271	1341	1796	1938	2394
		Minimum Height	6'-5"					
		Support Width (C)	5'-0"					
	10	Model Number	K90-4-10/10	K90-4-10/12	K90-4-10/14	K90-4-10/16	K90-4-10/20	K90-4-10/24
		Inside Span (A)	9'-3"	11'-3"	13'-3"	15'-3"	18'-6"	22'-6"
		Overall Length (B)	11'-6"	13'-6"	15'-6"	17'-6"	21'-6"	25'-6"
		Weight (lbs.)	1275	1345	1415	1870	2012	2468
		Minimum Height	6'-11"					
		Support Width (C)	5'-6"					
	12	Model Number	K90-4-12/10	K90-4-12/12	K90-4-12/14	K90-4-12/16	K90-4-12/20	K90-4-12/24
		Inside Span (A)	9'-3"	11'-3"	13'-3"	15'-3"	18'-6"	22'-6"
		Overall Length (B)	11'-6"	13'-6"	15'-6"	17'-6"	21'-6"	25'-6"
		Weight (lbs.)	1402	1472	1542	1997	2139	2595
		Minimum Height	7'-11"					
		Support Width (C)	6'-6"					
	14	Model Number	K90-4-14/10	K90-4-14/12	K90-4-14/14	K90-4-14/16	K90-4-14/20	K90-4-14/24
		Inside Span (A)	9'-3"	11'-3"	13'-3"	15'-3"	18'-6"	22'-6"
		Overall Length (B)	11'-6"	13'-6"	15'-6"	17'-6"	21'-6"	25'-6"
		Weight (lbs.)	1526	1596	1666	2121	2263	2719
		Minimum Height	8'-11"					
		Support Width (C)	7'-6"					
16	Model Number	K90-4-16/10	K90-4-16/12	K90-4-16/14	K90-4-16/16	K90-4-16/20	K90-4-16/24	
	Inside Span (A)	9'-3"	11'-3"	13'-3"	15'-3"	18'-6"	22'-6"	
	Overall Length (B)	11'-6"	13'-6"	15'-6"	17'-6"	21'-6"	25'-6"	
	Weight (lbs.)	1653	1733	1793	2248	2390	2846	
	Minimum Height	10'-11"						
	Support Width (C)	7'-6"						
Beam Height (in.)			10	12	15	18		
Flange Width (in.)			4.66	5.0	5.5	6.0		
Caster Diameter (in.)			8					

* Total weight of hoist and trolley not to exceed 20% of rated capacity.

Gantry Cranes



The Caldwell Group • 800-628-4263 • www.caldwellinc.com

Krane-King® Section
2011-2013 Master Catalog

Model K90-5 - 5 Ton Capacity



SPECIFICATIONS			Nominal Span (ft.)					
			Clamp Connection				Bolt Connection	
5 Ton Capacity*			10	12	14	16	20	24
Maximum Height Under Beam (ft.)	7	Model Number	K90-5-7/10	K90-5-7/12	K90-5-7/14	K90-5-7/16	K90-5-7/20	K90-5-7/24
		Inside Span (A)	9'-3"	11'-3"	13'-3"	15'-3"	18'-6"	22'-6"
		Overall Length (B)	11'-6"	13'-6"	15'-6"	17'-6"	21'-6"	25'-6"
		Weight (lbs.)	1267	1337	1407	1862	2449	2905
		Minimum Height	5'-6"					
		Support Width (C)	4'-0"					
	9	Model Number	K90-5-9/10	K90-5-9/12	K90-5-9/14	K90-5-9/16	K90-5-9/20	K90-5-9/24
		Inside Span (A)	9'-3"	11'-3"	13'-3"	15'-3"	18'-6"	22'-6"
		Overall Length (B)	11'-6"	13'-6"	15'-6"	17'-6"	21'-6"	25'-6"
		Weight (lbs.)	1381	1451	1521	1976	2662	3118
		Minimum Height	6'-6"					
		Support Width (C)	5'-0"					
	10	Model Number	K90-5-10/10	K90-5-10/12	K90-5-10/14	K90-5-10/16	K90-5-10/20	K90-5-10/24
		Inside Span (A)	9'-3"	11'-3"	13'-3"	15'-3"	18'-6"	22'-6"
		Overall Length (B)	11'-6"	13'-6"	15'-6"	17'-6"	21'-6"	25'-6"
		Weight (lbs.)	1455	1525	1595	2050	2770	3226
		Minimum Height	7'					
		Support Width (C)	5'-6"					
	12	Model Number	K90-5-12/10	K90-5-12/12	K90-5-12/14	K90-5-12/16	K90-5-12/20	K90-5-12/24
		Inside Span (A)	9'-3"	11'-3"	13'-3"	15'-3"	18'-6"	22'-6"
		Overall Length (B)	11'-6"	13'-6"	15'-6"	17'-6"	21'-6"	25'-6"
		Weight (lbs.)	1582	1652	1722	2177	2984	3440
		Minimum Height	8'					
		Support Width (C)	6'-6"					
	14	Model Number	K90-5-14/10	K90-5-14/12	K90-5-14/14	K90-5-14/16	K90-5-14/20	K90-5-14/24
		Inside Span (A)	9'-3"	11'-3"	13'-3"	15'-3"	18'-6"	22'-6"
		Overall Length (B)	11'-6"	13'-6"	15'-6"	17'-6"	21'-6"	25'-6"
		Weight (lbs.)	1706	1776	1846	2301	3196	3652
Minimum Height		9'						
Support Width (C)		7'-6"						
16	Model Number	K90-5-16/10	K90-5-16/12	K90-5-16/14	K90-5-16/16	K90-5-16/20	K90-5-16/24	
	Inside Span (A)	9'-3"	11'-3"	13'-3"	15'-3"	18'-6"	22'-6"	
	Overall Length (B)	11'-6"	13'-6"	15'-6"	17'-6"	21'-6"	25'-6"	
	Weight (lbs.)	1833	1903	1973	2428	3411	3867	
	Minimum Height	11'						
	Support Width (C)	7'-6"						
Beam Height (in.)			12			15		18
Flange Width (in.)			5			5.5		6.0
Caster Diameter (in.)			8					

* Total weight of hoist and trolley not to exceed 20% of rated capacity.

Gantry Cranes



The Caldwell Group • 800-628-4263 • www.caldwellinc.com

Krane-King® Section
2011-2013 Master Catalog

Model K90-8 - 8 Ton Capacity

SPECIFICATIONS			Nominal Span (ft.)					
			Bolt Connection					
8 Ton Capacity*			10	12	14	16	20	24
Maximum Height Under Beam (ft.)	7	Model Number	K90-8-7/10	K90-8-7/12	K90-8-7/14	K90-8-7/16	K90-8-7/20	K90-8-7/24
		Inside Span (A)	8'-6"	10'-6"	12'-6"	14'-6"	18'-6"	22'-6"
		Overall Length (B)	11'-6"	13'-6"	15'-6"	17'-6"	21'-6"	25'-6"
		Weight (lbs.)	1861	1957	2053	2237	2677	3129
		Minimum Height	5'-6"					
		Support Width (C)	4'-0"					
	9	Model Number	K90-8-9/10	K90-8-9/12	K90-8-9/14	K90-8-9/16	K90-8-9/20	K90-8-9/24
		Inside Span (A)	8'-6"	10'-6"	12'-6"	14'-6"	18'-6"	22'-6"
		Overall Length (B)	11'-6"	13'-6"	15'-6"	17'-6"	21'-6"	25'-6"
		Weight (lbs.)	2074	2170	2266	2450	2890	3342
		Minimum Height	6'-6"					
		Support Width (C)	5'-0"					
	10	Model Number	K90-8-10/10	K90-8-10/12	K90-8-10/14	K90-8-10/16	K90-8-10/20	K90-8-10/24
		Inside Span (A)	8'-6"	10'-6"	12'-6"	14'-6"	18'-6"	22'-6"
		Overall Length (B)	11'-6"	13'-6"	15'-6"	17'-6"	21'-6"	25'-6"
		Weight (lbs.)	2182	2278	2374	2558	2998	3450
		Minimum Height	7'					
		Support Width (C)	5'-6"					
	12	Model Number	K90-8-12/10	K90-8-12/12	K90-8-12/14	K90-8-12/16	K90-8-12/20	K90-8-12/24
		Inside Span (A)	8'-6"	10'-6"	12'-6"	14'-6"	18'-6"	22'-6"
		Overall Length (B)	11'-6"	13'-6"	15'-6"	17'-6"	21'-6"	25'-6"
		Weight (lbs.)	2396	2492	2588	2772	3212	3664
		Minimum Height	8'					
		Support Width (C)	6'-6"					
14	Model Number	K90-8-14/10	K90-8-14/12	K90-8-14/14	K90-8-14/16	K90-8-14/20	K90-8-14/24	
	Inside Span (A)	8'-6"	10'-6"	12'-6"	14'-6"	18'-6"	22'-6"	
	Overall Length (B)	11'-6"	13'-6"	15'-6"	17'-6"	21'-6"	25'-6"	
	Weight (lbs.)	2608	2704	2800	2984	3424	3876	
	Minimum Height	9'						
	Support Width (C)	7'-6"						
16	Model Number	K90-8-16/10	K90-8-16/12	K90-8-16/14	K90-8-16/16	K90-8-16/20	K90-8-16/24	
	Inside Span (A)	8'-6"	10'-6"	12'-6"	14'-6"	18'-6"	22'-6"	
	Overall Length (B)	11'-6"	13'-6"	15'-6"	17'-6"	21'-6"	25'-6"	
	Weight (lbs.)	2823	2919	3015	3199	3640	4091	
	Minimum Height	11'						
	Support Width (C)	7'-6"						
Beam Height (in.)			18			16.43 - W		18.35 - W
Flange Width (in.)			6.0			7.12		7.59
Caster Diameter (in.)			8					

* Total weight of hoist and trolley not to exceed 20% of rated capacity.