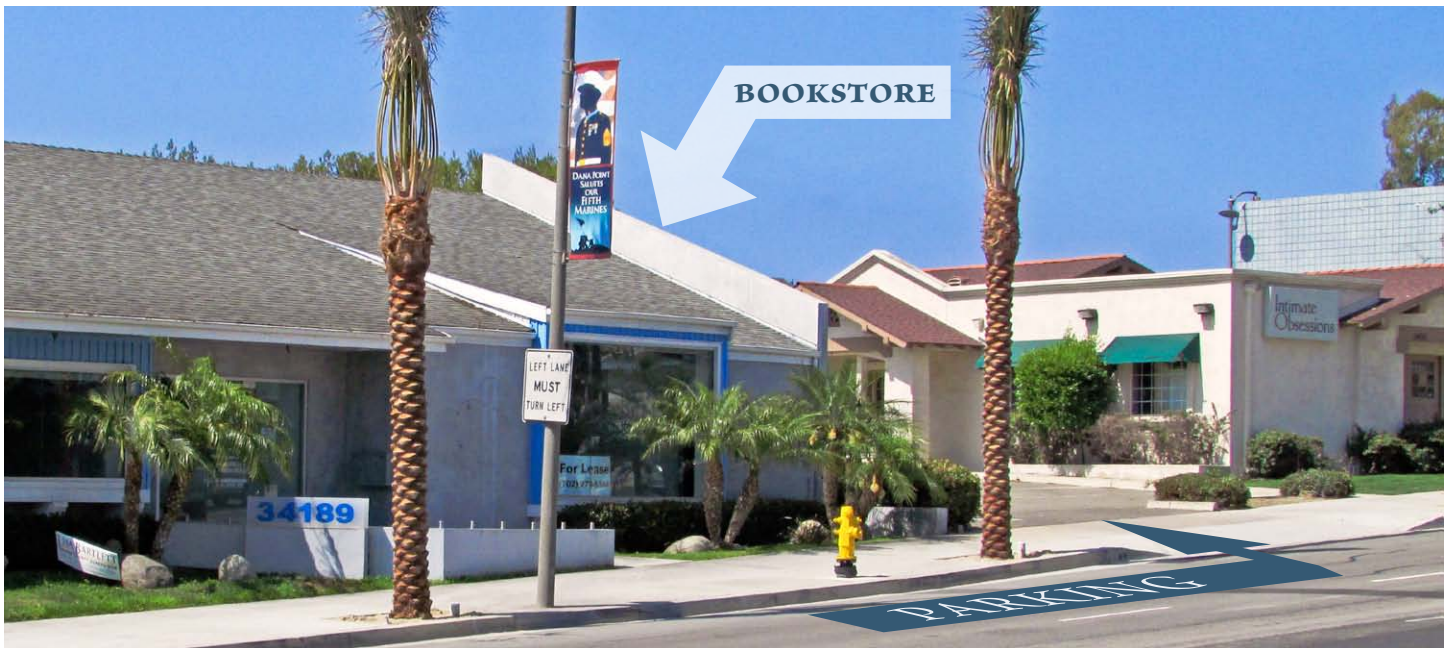


# The Sea Scribe

THE NEWSLETTER OF THE FRIENDS OF THE DANA POINT LIBRARY ♪ SPRING 2014

## LIBRARY RENOVATION



### WE'RE RELOCATING FOR JULY AND AUGUST

#### *Bookstore Moves Temporarily to 34189 Pacific Coast Highway*

We're delighted to announce that renovations to replace skylights at the Dana Point Library will start at the beginning of July 2014. The project will take about two months, and is funded by the *Friends of the Dana Point Library* and the *Orange County Public Libraries*. The whole library building will be closed during that time, so we'll be temporarily moving the Friends' Bookstore to downtown Dana Point for July and August 2014.

Our new address is 34189 *Pacific Coast Highway*, on the lefthand side of the road before crossing Golden Lantern as you drive north on Route 1 towards Laguna Beach. The location has a dedicated parking lot.

Our thanks go to *Vickie and Joe Scala* (owners of the *Tavern on the Coast* restaurant), who have graciously offered us the space rent-free.

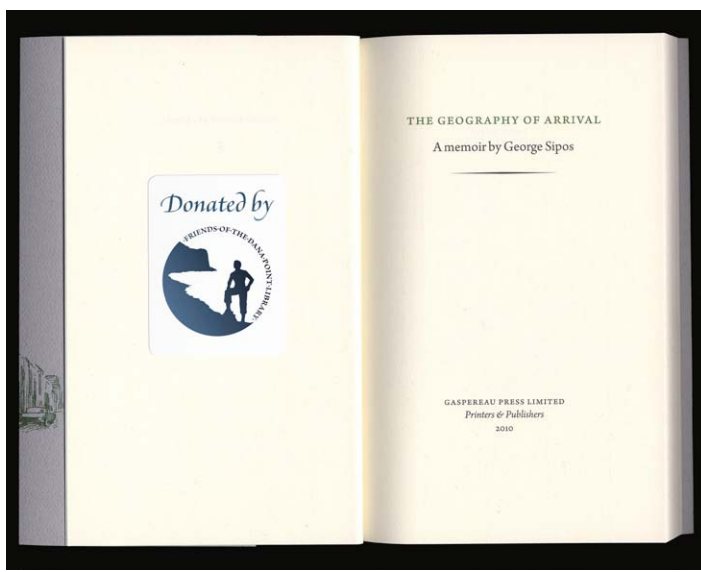
Before we move, the Bookstore will have a 50% off sale during the last week of June. We welcome book donations at the new location starting on 1 July 2014.

We need help moving books to our new location. If you'd like to volunteer (or have a truck or van), please contact Paul Strauss at [president@friendsdanapoint.org](mailto:president@friendsdanapoint.org).

We'll be holding a party at the new bookstore from 1:00 to 3:00 PM on Tuesday 1 July 2014. Please join us to help celebrate our move.



NEW BOOKSTANDS: At Dana Wharf Sportfishing (left) and at Tutor & Spunky's Deli (right).



NEW BOOKPLATES: About one third of all books purchased by the Dana Point Library this year will have our bookplate.

## PRESIDENT'S REPORT

What a pleasure it is to work in an organization that is self-sustaining. I was away for a six-week vacation, during which time the association secretary Juliette Ravenelle had a four-week vacation. The remaining board members stepped into the breach. Then two board members resigned within one week, but we found two willing replacements in a few days' time. And recently we heard that the library and bookstore will be closed for two months! Once again the board members came up with a plan to avoid losing two months of income. Well done all!

Our treasurer Julie Arnold's husband has taken up a position in Michigan, and Bill Shepherd has taken an executive position in Irvine that prevents him devoting time to the board. We thank both for their work. Julie has revamped a number of the treasurer's systems, and has proven to be most efficient. The board has appointed their replacements: Kat Quinn has taken Julie's place and Karla Sanders has replaced Bill.

Thanks to the hard work of Cubby Rayfield, the Friends has eleven new business members. Please support them as we build up relationships between the library and the wider community. Their business information is provided in this newsletter.

Our model of providing stacked shelves of books for eliciting donations – as seen at *JC Beans* over the years – has been extended to *Tutor & Spunky's Deli* and *Dana Wharf Sportfishing* under the rubric '\$2.00 per Book'. Please use these alternate book sources for your new reading material needs.

To better reflect the Friends' support of the Dana Point Library, we've arranged to add bookplates to new library purchases. Our association currently provides about one third of the total funding – our bookplate will consequently appear on the frontispiece of a third of books purchased this year by the library.

**Paul Strauss** ([president@friendsdanapoint.org](mailto:president@friendsdanapoint.org))



TUESDAY'S VOLUNTEERS: *Mary Bott, Cubby Rayfield, Barbara Anderson, Juliette Ravenelle & Lisa Buchner.*

## NEWS FROM THE BOOKSTORE

The bookstore is running smoothly, and donations of books have been increasing so that we can offer sales of books in almost any subject to our customers. We prefer not to trash books that we cannot use; rather we donate to organizations that have a need for them. This has enabled us to serve organizations including the *Good Shepherd Shelter for Battered Women with Children*, and elementary school teachers who welcome our donations of children's books. It is very satisfying to be able to reach out, filling a need – and also offering our faithful customers a wide selection.

We also continue to donate to the *Vietnam Veterans of America*, the *Susan G Komen Foundation*, and the *Salvation Army*. Our volunteers' enthusiasm to improve the store and assist our customers has given us a reputation: we have been told that we are *'one of the best around.'*

We are always looking to increase the number of volunteers, and appreciate any commitment you can make to improve our library. You can volunteer as flexibly as you need: as little as once a week, once a month, or substituting when there is a need. We have many volunteers who are readers and are familiar with authors, both fiction and non-fiction writers. They are always available to recommend and help customers select books and hear about the latest books to come in the store. We hope you'll drop by to select your summer reading.

Jackie Kraver has volunteered to take over the manager's position of departing Julie Arnold on Friday morning. We thank Julie for the vibrancy and dedication that she brought to the bookstore.

**Barbara Anderson (Bookstore Manager)**

## NEW MEMBERS

Thank you to all who have renewed their memberships for 2014. We'd also like to welcome these new members:

### ANNUAL MEMBERS

Sue Chaska; Fran Gale; Heather Johnson;  
Bernice Mahoney; Christine Miller; Joanna Schroeder;  
Maryam Shaifi; Marion Tresfon.

### FAMILY MEMBERS

Phyllis Tezer; Gloria & Joel Weintraub.

### LIFE MEMBERS

Priscilla Agnew; Ellen Dovey; Karl & Carol Kuhn;  
Kat Quinn.

### HONORARY LIFE PATRONS

Hansa & Lakshman Sehgal.

---

## MEMBERSHIP TYPES

### ANNUAL MEMBERSHIPS

- ~ \$20 – Single (*\$15 from September to December*)
- ~ \$35 – Family (*\$30 from September to December*)
- ~ \$50 – Patron (*\$40 from September to December*)
- ~ \$100 – Business Member

### LIFETIME MEMBERSHIPS

- ~ \$250 – Life Member (*one-time payment*)
- ~ \$500 – Honorary Life Patron (*one-time payment*)
- ~ \$1000 – Distinguished Life Patron (*one-time payment*)

## DONATIONS

We've been fortunate to receive a number of generous donations this year. Thank you to the following donors:

- ~ \$1000 from the Dana Point Women's Club
- ~ \$50 from Lynne Day (*in memory of Charlotte McClung*)
- ~ \$50 from the Friday Big Book Club
- ~ \$50 from Sue & William Korby  
(*celebrating Darlene Robertson & Winton Sanson*)
- ~ \$50 from Sue & William Korby (*celebrating Sharon & Chris Hockmeyer's fiftieth wedding anniversary*)
- ~ \$1750 from the National Charity League
- ~ \$400 from the Niguel Shores Women's Club
- ~ \$156 from the Page Turners Reading Group  
(*in memory of Gretchen Rask*)

---

## IN MEMORIAM

The Board expresses condolences with the family of *Forrest Owen*, who passed away recently. He served as Association President in years past, and worked on the Bylaws Amendment Committee during 2013.

We'd also like to note the passing of *Charlotte McClung* and *Gretchen Rask*. They will be missed.

---

## PRODUCTION

The Spring 2014 edition of the *Friends of the Dana Point Library* newsletter was published on 6 June 2014.

Thank you to all of our authors and other contributors. We welcome your feedback and comments – please send any correspondence to the editor.

EDITOR: Paul Strauss ([president@friendsdanapoint.org](mailto:president@friendsdanapoint.org))

LAYOUT: Andrew Keith Strauss ([www.hangklip.net](http://www.hangklip.net))

## NEW BUSINESS MEMBER INFORMATION

---

### *Bonjour Café & Bistro*

24633 Del Prado  
Dana Point – California – 92629  
Tel 1 949 496 6368 – [www.bonjourcafe.com](http://www.bonjourcafe.com)

### *Brenda's Hair House*

34144 Pacific Coast Highway – Suite C  
Dana Point – California – 92629  
Tel 1 949 661 8665 – *Brenda Eiserhover*

### *Brio Tuscany Grille*

24050 Camino del Avion  
Monarch Beach – California – 92629  
Tel 1 949 443 1476 – [www.briorestaurant.com](http://www.briorestaurant.com)

### *The Coffee Importers*

34531 Street of the Golden Lantern  
Dana Point – California – 92629  
Tel 1 949 493 7773 – [www.coffeeimporters.com](http://www.coffeeimporters.com)

### *Dana Point Hardware*

24422 Del Prado  
Dana Point – California – 92629  
Tel 1 949 496 4158 – [billydpg@gmail.com](mailto:billydpg@gmail.com)

### *Dana Point Nursery*

34100 Pacific Coast Highway  
Dana Point – California – 92629  
Tel 1 949 496 5137 – [www.danapointnursery.com](http://www.danapointnursery.com)

### *Harbor Jeweler*

34515 Street of the Golden Lantern  
Dana Point – California – 92629  
Tel 1 949 276 2424 – [www.harborjeweler.com](http://www.harborjeweler.com)

### *Jack's Restaurant & Bar*

24462 Del Prado  
Dana Point – California – 92629  
Tel 1 949 489 1903 – [www.jacksdp.com](http://www.jacksdp.com)

### *Jeff Kindseth DDS*

24721 La Plaza  
Dana Point – California – 92629  
Tel 1 949 661 2152 – [jeffkindsethdds@aol.com](mailto:jeffkindsethdds@aol.com)

### *Lantern Bay Carpet & Drapes*

24462 Del Prado – Suite 1 A  
Dana Point – California – 92629  
Tel 1 949 240 1545 – [www.lanternbaycarpets.com](http://www.lanternbaycarpets.com)

### *Tavern on the Coast*

34212 Pacific Coast Highway – Suite A  
Dana Point – California – 92629  
Tel 1 949 415 5888 – [www.tavernonthecoast.com](http://www.tavernonthecoast.com)

### *Tutor & Spunky's Deli*

34085 Pacific Coast Highway – Suite 116  
Dana Point – California – 92629  
Tel 1 949 248 9008 – [www.tutorandspunkys.com](http://www.tutorandspunkys.com)

# FINANCIAL REPORT FOR 2014 *~* YEAR TO DATE

## Balance Sheet

## Expenses Statement

CASH BASIS 1 January 2014 to 30 April 2014

CASH BASIS 1 January 2014 to 30 April 2014

### ASSETS

Petty Cash	40.00
U S Bank ( <i>Checking</i> )	10 816.72
Wells Fargo (CD)	50 941.27
Wells Fargo ( <i>Checking</i> )	100.00
Wells Fargo ( <i>Money Market 1</i> )	31 187.87
Wells Fargo ( <i>Money Market 2</i> )	(3.85)

**TOTAL ASSETS \$ 93 082.01**

### LIABILITIES & EQUITY

EQUITY	
Retained Earnings	159 049.60
Net Income	(65 967.59)
<b>TOTAL EQUITY</b>	<b>\$ 93 082.01</b>

**TOTAL LIABILITIES & EQUITY \$ 93 082.01**

## Income Statement

CASH BASIS 1 January 2014 to 30 April 2014

Book Sales	16 351.52
Donations ( <i>Directed</i> )	210.00
Donations ( <i>General</i> )	713.44
Donations ( <i>Total</i> )	923.44
Interest Income	86.65
Membership Dues	3250.00
Merchandise Sales	32.95

**TOTAL INCOME \$ 20 644.56**

### LIBRARY DONATIONS

Building Renovations	70 000.00
Books ( <i>Adult</i> )	4 379.00
Books ( <i>Children</i> )	4 454.00
Books ( <i>AV, Periodicals &amp; Reference</i> )	551.00
Books ( <i>Teen</i> )	2 023.00
Books ( <i>Total</i> )	11 407.00
Programs ( <i>Adult</i> )	600.00
Programs ( <i>Children: Directed</i> )	100.00
Programs ( <i>Children: Other</i> )	750.00
Programs ( <i>Total</i> )	1 450.00

**TOTAL LIBRARY DONATIONS \$ 82 857.00**

### ASSOCIATION OPERATIONS

Bank Charges	44.65
Bookstore Expenses	349.96
Equipment & Supplies	80.99
Insurance	2 329.00
Membership Expenses	63.86
Newsletter, Roster & Website	78.85
Postage	280.50
Professional Fees ( <i>Accounting</i> )	400.00
Public Relations	92.34
Taxes & Fees	35.00

**TOTAL ASSOCIATION OPERATIONS \$ 3 755.15**

**TOTAL EXPENSES \$ 86 612.15**

**NET INCOME (\$ 65 967.59)**