

The Mississippi School for Mathematics and Science



2016-2017 PROFILE



MSMS is a Member of the National Consortium of Secondary STEM Schools. The goal of the Consortium is to foster, support, and advance the efforts of those specialized schools whose primary purpose is to attract and academically prepare students for leadership in mathematics, science, and technology.

1100 College Street, MUW 1627 Columbus, MS 39701

Phone: 662-329-7674 Fax: 662-329-7467

www.themsms.org

The Mississippi School for Mathematics (MSMS) is a public, residential, co-educational high school for academically talented juniors and seniors. We admit qualified Mississippi students without regard to race, creed, color, sex, or national and ethnic origin. Our mission is “to enhance the future of Mississippi in the global society by meeting the individual needs of gifted and talented students through providing innovative learning experiences and leadership development in a residential environment, providing quality educational leadership for other educators, and conducting aggressive outreach programs that impact students across Mississippi.”

In 2014, MSMS was ranked 57th by *the Daily Beast* on their list of best high schools in America!

ACCREDITATION Southern Association of Colleges and Schools (SACS)

ENROLLMENT

Juniors	117
Seniors	120

ETHNICITY

Asian	12.7%
African American	16.9%
Hispanic	1.7%
Native American	0.4%
White	65.8%
Two or More Races	2.5%

LOW SES Annually 25-30%

TEACHING FACULTY

Master Degrees	100%
Doctoral Degrees	27.2%

<u>Executive Director</u> Dr. Germain McConnell gmconnell@themsms.org	<u>Dir. for Academic Affairs</u> Mrs. Kelly Brown kbrown@themsms.org
--	--

<u>Dir. for Advancement</u> Dr. Heather Hanna (662) 329-8521 hhanna@themsms.org	<u>Dir. for Student Affairs</u> Mr. Rick Smith (662) 329-7679 rsmith@themsms.org
--	---

ACADEMICS

- All courses taught at honors level or above. Dual credit courses receive college credits from MUW or MSU.
- 24.5 Carnegie units required for graduation from MSMS for the class of 2016 and 2017; 13 units earned while at MSMS
- Students have opportunities for in-depth studies through independent courses, mentorship, and research.

ADVANCED PLACEMENT COURSES

AP Physics I	AP Chemistry
AP Physics II	AP Statistics
AP Physics C Mechanics	AP Calculus I
AP Physics C E&M	AP Calculus II
AP Biology	AP Calculus III

DUAL CREDIT COURSES

University English I - MUW EN 101 & EN 102
University English II - MUW EN 201 & EN 202
University Calculus I - MUW MA 181
University Calculus II - MUW MA 182
University Western Civilization - MUW HIS 102
University History of the US II - MUW HIS 110
University Intro to Programming - MSU CSE 1284
University Intermediate Programming - MSU CSE 1384
University Intro to Engineering – MSU GE 1911
University Intro to Chem Engineering – MSU CHE2203

POST HIGH SCHOOL PLACEMENT

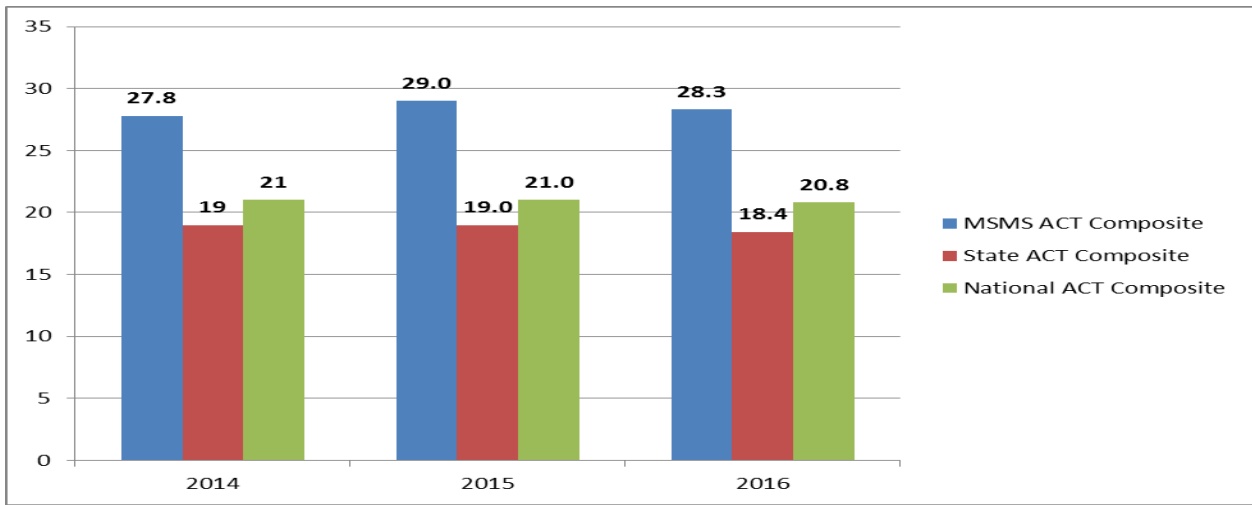
99% matriculate to 4-year colleges
1% matriculate to 2-year colleges

83% receive bachelor's degree or higher
48% receive graduate degree

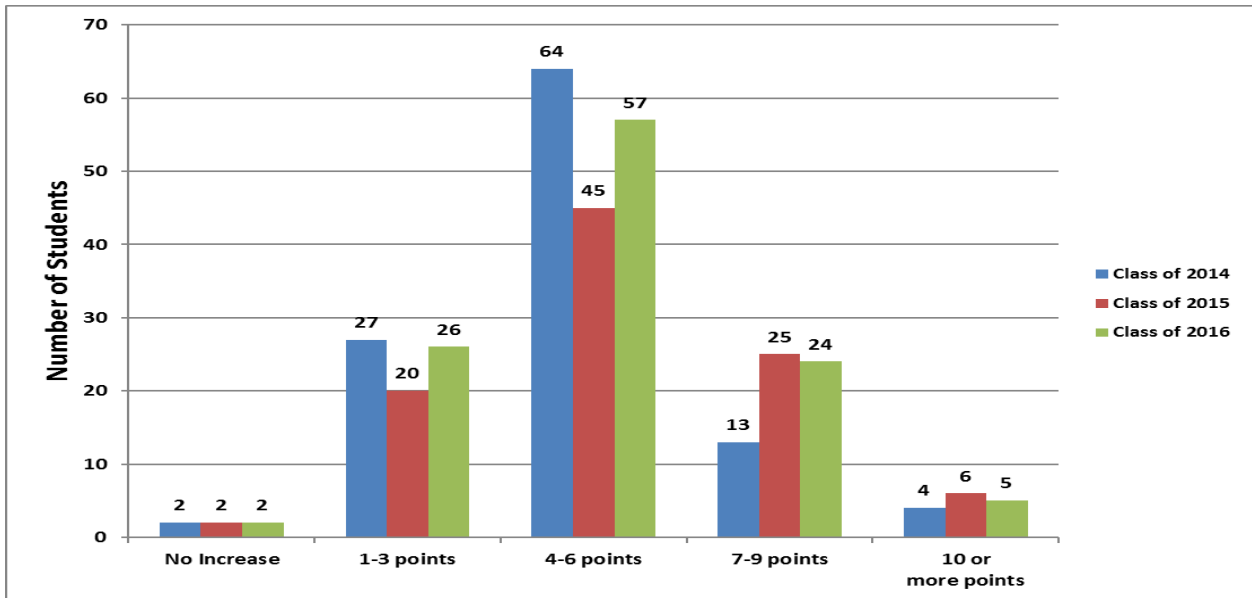
AWARDS AND DISTINCTIONS

11	National Merit Finalists
3	National Merit Scholars
1	Presidential Scholars
5	QuestBridge Scholarship Winners
2	Participants in National Youth Science Camp
7	MS Governor's School Scholars
1	MS Excellence in Teaching Program

2014-2016 MEAN ACT SCORE TRENDS



2014-2016 INCREASE ON ACT COMPOSITE SCORES



Colleges Attended by MSMS 2016 Graduates

(Since 2013, between 53% and 63% of MSMS graduates stayed in-state to attend college)

Agnes Scott College
 Bay Path University
 Baylor University
Belhaven University (1)
 Boston College
 Carleton College
 Colgate University
 Columbia College Chicago
 Columbia University
 Florida State University
 Grinnell College
 Harvey Mudd College
 Howard University
Jackson State University (1)

Louisiana State University
 Loyola University, New Orleans
 Marlboro College
 Massachusetts Institute of Technology
 Mercer University
Mississippi State University (30)
 Rhodes College
 Rice University
 Savannah College of Art and Design
 Stanford University
 Stevens Institute of Technology
 The University of Memphis
The University of Mississippi (30)
 Tufts University

United States Air Force Academy
 University of North Carolina – Chapel Hill
 University of Illinois –Urbana-Champaign
 University of South Alabama
 University of Southern California
University of Southern Mississippi (8)
 University of Utah
 University of Washington
 University of Waterloo
 Vanderbilt University
 Vassar College
 Washington and Lee University
 Washington University in St. Louis
 Yale University

MSMS ALUMNI IMPACT ON MISSISSIPPI

(Based on the 2015 MSMS Economic & Social Impact Survey conducted by the MSMS Foundation, Inc.)

Alumni Living In-State	36%
Average Income of Alumni Living In-State Compared to Average Mississippian	264%
Annual Economic Value of MSMS Alumni-Owned Businesses in MS	\$29-63 Million
What is the Return on Investment for MSMS?	10.2:1