

Passover Cranium

Rules and Introduction

- **Supplies:**
 - 30 cutout Pesach Cranium Cards - folded in half.
 - 4-40 people split into two teams: Gefilte Fish and Borscht.
 - A desire to step out of your shell at the Pesach Seder.
- **Game-play:**
 - Teams take turns responding to the challenges on their respective Cranium Cards.
 - A member of team Gefilte Fish should read the card aloud and, depending on the task, the card will be given to the Borscht member who will be accomplishing the task. Make sure they don't see the answer on the back of the card!
 - The card should always be given to the other team, except for the Gnilleps Cards that requires them to spell a word backwards.
 - Teams should be given approximately 2 minutes to accomplish each card, but hey, who's counting?
 - If the team gets accomplished the task, they keep the card which is worth one point. At the end of the night, add up the points and see who won!
- **When do we play?:**
 - Strategize beforehand to think about when you might expect a lull in the action. Alternatively, keep it ready for when you see people going upstairs to check if Eliyahu is under their blanket.
 - You can play the game straight through, or stop to give each team the opportunity to do one card before moving on to the next part of the seder.
 - You can save half of the cards for the second night in order to allow for a rematch.
- **Important Reminder!:**
 - The Pesach Seder can be fun, so whether you use these cards or not, make it a night to remember! Have fun!





TEAM: Gefilte Fish

cameo

To win this **cameo**, your team must choose one performer to **act out silent clues**, just like charades.

Hint
Passover Story

Cameo Word
Plague of the Frogs

CRANIUM® CUSTOM

star performer®



* Plague of the Frogs



TEAM: Borscht

cameo

To win this **cameo**, your team must choose one performer to **act out silent clues**, just like charades.

Hint
Passover Seder

Cameo Word
Eating Maror

CRANIUM® CUSTOM

star performer®



* Eating Maror



TEAM: Gefilte Fish

gnilleps®

To win this **Gnilleps**, choose a teammate who can correctly **spell** the word below **backwards** on the first try without writing it down. I'll read the word aloud and then start the timer.

Word
FREEDOM

CRANIUM® CUSTOM

word worm®



* M-O-D-E-E-R-F



TEAM: Borscht

gnilleps®

To win this **Gnilleps**, choose a teammate who can correctly **spell** the word below **backwards** on the first try without writing it down. I'll read the word aloud and then start the timer.

Word
EGYPT

CRANIUM® CUSTOM

word worm®



* T-P-Y-G-E



TEAM: Gefilte Fish

polygraph®

To win this **Polygraph**, your team must determine whether the statement below is **true or false**. I'll read the statement aloud, pass the card to you, and then start the timer.

Question
True or False? The dog eats the goat in the passover song "Chad Gadya."

CRANIUM® CUSTOM

data head®



* False. Who did?



TEAM: Borscht

polygraph®

To win this **Polygraph**, your team must determine whether the statement below is **true or false**. I'll read the statement aloud, pass the card to you, and then start the timer.

Question
True or False? Moshe was not the messenger for all 10 plagues.

CRANIUM® CUSTOM

data head®



* True. Who did the rest?





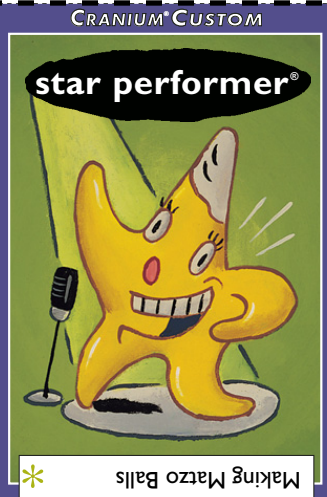
TEAM: **Gefilte Fish**

sideshow

To win this **sideshow**, choose a performer from your team who can get you to guess the answer on the back of this card by **moving a teammate's arms and legs like a puppet**, with no talking or sound effects.

Hint
Passover Preparation

Sideshow Word
Making Matzo Balls



TEAM: **Borscht**

sideshow

To win this **sideshow**, choose a performer from your team who can get you to guess the answer on the back of this card by **moving a teammate's arms and legs like a puppet**, with no talking or sound effects.

Hint
Passover Preparation

Sideshow Word
Bedikat Chametz



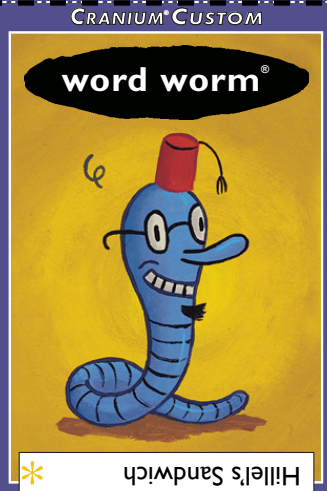
TEAM: **Gefilte Fish**

zelpuz

To win this **Zelpuz**, your team must **rearrange the letters** in the mixed-up puzzle below to find the answer. I'll read the hint and puzzle aloud, pass the card to you, and then start the timer.

Hint
Passover Seder

Puzzle
SLEIHLL IASCHDNW



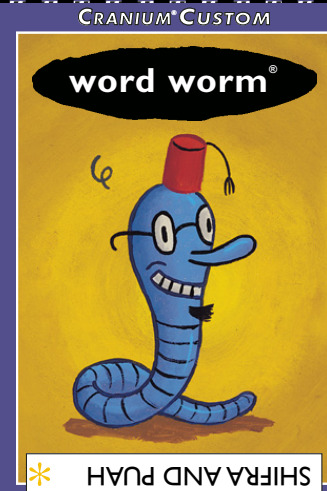
TEAM: **Borscht**

zelpuz

To win this **Zelpuz**, your team must **rearrange the letters** in the mixed-up puzzle below to find the answer. I'll read the hint and puzzle aloud, pass the card to you, and then start the timer.

Hint
Passover Characters

Puzzle
FRIASH DAN AHPU

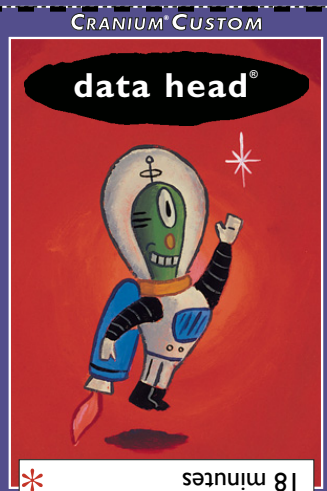


TEAM: **Gefilte Fish**

factoid

To win this **factoid**, your team must correctly answer the **question** below. I'll read the question aloud, pass the card to you, and then start the timer.

Question
How many minutes can a matzo bake before it becomes chametz?

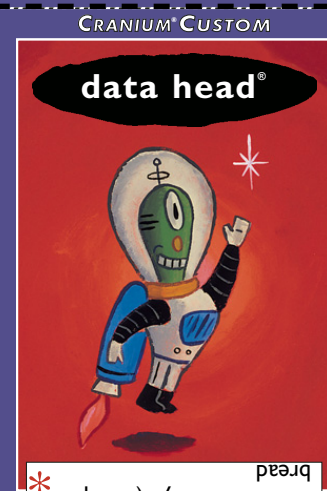


TEAM: **Borscht**

factoid

To win this **factoid**, your team must correctly answer the **question** below. I'll read the question aloud, pass the card to you, and then start the timer.

Question
During what part of the seder do we invite all hungry people to join in our seder?





TEAM: **Gefilte Fish**

cameo

To win this **cameo**, your team must choose one performer to **act out silent clues**, just like charades.

Hint
Passover Story

Cameo Word
Moshe approaching the burning bush.

CRANIUM® CUSTOM

star performer®



* See reverse.



TEAM: **Borscht**

cameo

To win this **cameo**, your team must choose one performer to **act out silent clues**, just like charades.

Hint
Passover Story

Cameo Word
Nachshon jumping into the sea

CRANIUM® CUSTOM

star performer®



* Nachshon jumping in sea



TEAM: **Gefilte Fish**

gnilleps®

To win this **Gnilleps**, choose a teammate who can correctly **spell** the word below **backwards** on the first try without writing it down. I'll read the word aloud and then start the timer.

Word
PASSOVER

CRANIUM® CUSTOM

word worm®



* R-E-V-O-S-S-A-P



TEAM: **Borscht**

gnilleps®

To win this **Gnilleps**, choose a teammate who can correctly **spell** the word below **backwards** on the first try without writing it down. I'll read the word aloud and then start the timer.

Word
QUESTIONS

CRANIUM® CUSTOM

word worm®



* S-N-O-I-T-S-E-U-Q



TEAM: **Gefilte Fish**

polygraph®

To win this **Polygraph**, your team must determine whether the statement below is **true or false**. I'll read the statement aloud, pass the card to you, and then start the timer.

Question
True or False? Aside from Matzo, the seder plate consists only of the Maror, the Pesach, the Egg and the karpas.

CRANIUM® CUSTOM

data head®



* False. What's missing?



TEAM: **Borscht**

polygraph®

To win this **Polygraph**, your team must determine whether the statement below is **true or false**. I'll read the statement aloud, pass the card to you, and then start the timer.

Question
True or False? The Jews were saved from the 10th plague because they prayed to God not to be killed.

CRANIUM® CUSTOM

data head®



* False. Why were they saved?





TEAM: **Gefilte Fish**

sideshow

To win this **sideshow**, choose a performer from your team who can get you to guess the answer on the back of this card by **moving a teammate's arms and legs like a puppet**, with no talking or sound effects.

Hint
Passover Story

Sideshow Word
Placing baby Moshe into the basket in the river.



* See reverse



TEAM: **Borscht**

sideshow

To win this **sideshow**, choose a performer from your team who can get you to guess the answer on the back of this card by **moving a teammate's arms and legs like a puppet**, with no talking or sound effects.

Hint
Passover Story

Sideshow Word
Miriam Leading Bnei Yisrael in song through the sea.



* See reverse



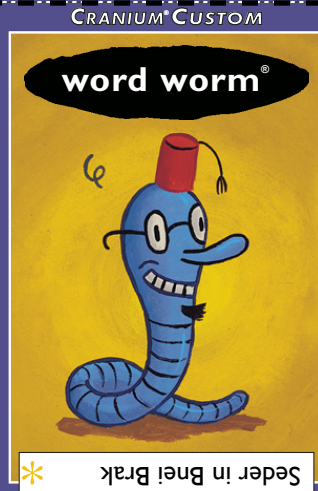
TEAM: **Gefilte Fish**

zelpuz

To win this **Zelpuz**, your team must **rearrange the letters** in the mixed-up puzzle below to find the answer. I'll read the hint and puzzle aloud, pass the card to you, and then start the timer.

Hint
Passover Seder

Puzzle
DEERS NI EBIN ARBK



* Seder in Bnei Brak



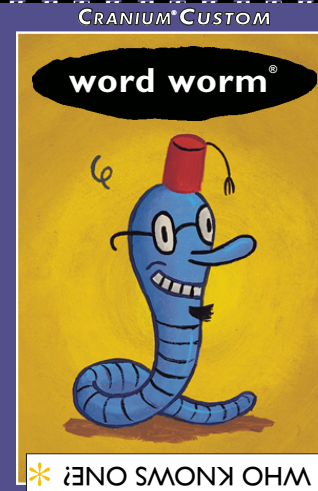
TEAM: **Borscht**

zelpuz

To win this **Zelpuz**, your team must **rearrange the letters** in the mixed-up puzzle below to find the answer. I'll read the hint and puzzle aloud, pass the card to you, and then start the timer.

Hint
Passover Seder

Puzzle
HOW WSOKN NOE?



* WH KNOWS ONE!

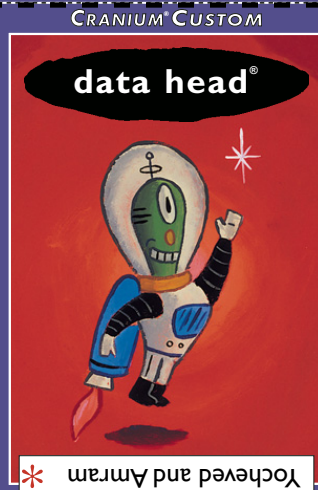


TEAM: **Gefilte Fish**

factoid

To win this **factoid**, your team must correctly answer the **question** below. I'll read the question aloud, pass the card to you, and then start the timer.

Question
Who were Moshe's Parents?



* Yocheved and Amram

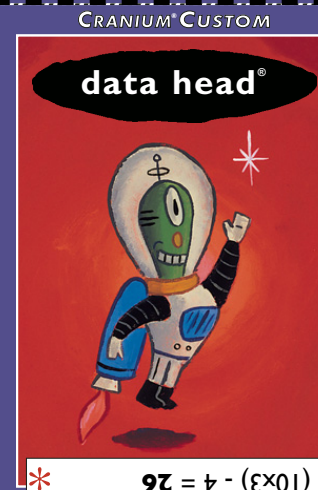


TEAM: **Borscht**

factoid

To win this **factoid**, your team must correctly answer the **question** below. I'll read the question aloud, pass the card to you, and then start the timer.

Question
What number do you get when multiplying the number of plagues by the number of matzos and subtracting the number of sons?



* $(10 \times 3) - 4 = 26$





TEAM: Gefilte Fish

sideshow

To win this **sideshow**, choose a performer from your team who can get you to guess the answer on the back of this card by **moving a teammate's arms and legs like a puppet**, with no talking or sound effects.

Hint
Passover Story

Sideshow Word
Egyptians suffering from the plague of Lice (kinim)

CRANIUM® CUSTOM

star performer®



* See reverse



TEAM: Borscht

sideshow

To win this **sideshow**, choose a performer from your team who can get you to guess the answer on the back of this card by **moving a teammate's arms and legs like a puppet**, with no talking or sound effects.

Hint
Passover Story

Sideshow Word
Jews putting the blood on the doorpost.

CRANIUM® CUSTOM

star performer®



* See reverse



TEAM: Gefilte Fish

zelpuz

To win this **Zelpuz**, your team must **rearrange the letters** in the mixed-up puzzle below to find the answer. I'll read the hint and puzzle aloud, pass the card to you, and then start the timer.

Hint
Passover Seder

Puzzle
LAGPEU FO HET SFIRT
NBRO

CRANIUM® CUSTOM

word worm®



* Plague of the First Born



TEAM: Borscht

zelpuz

To win this **Zelpuz**, your team must **rearrange the letters** in the mixed-up puzzle below to find the answer. I'll read the hint and puzzle aloud, pass the card to you, and then start the timer.

Hint
Passover Seder

Puzzle
YLAUIHE NAIVHA

CRANIUM® CUSTOM

word worm®



* ELIYAHU HANAVI



TEAM: Gefilte Fish

factoid

To win this **factoid**, your team must correctly answer the **question** below. I'll read the question aloud, pass the card to you, and then start the timer.

Question
In the song "Who knows one?" What is 13?

CRANIUM® CUSTOM

data head®



* The 13 attributes of God



TEAM: Borscht

factoid

To win this **factoid**, your team must correctly answer the **question** below. I'll read the question aloud, pass the card to you, and then start the timer.

Question
We wash our hands twice at the Seder. Which time do we say the bracha "al n'tilat yadayim"?

CRANIUM® CUSTOM

data head®



* The second time.

