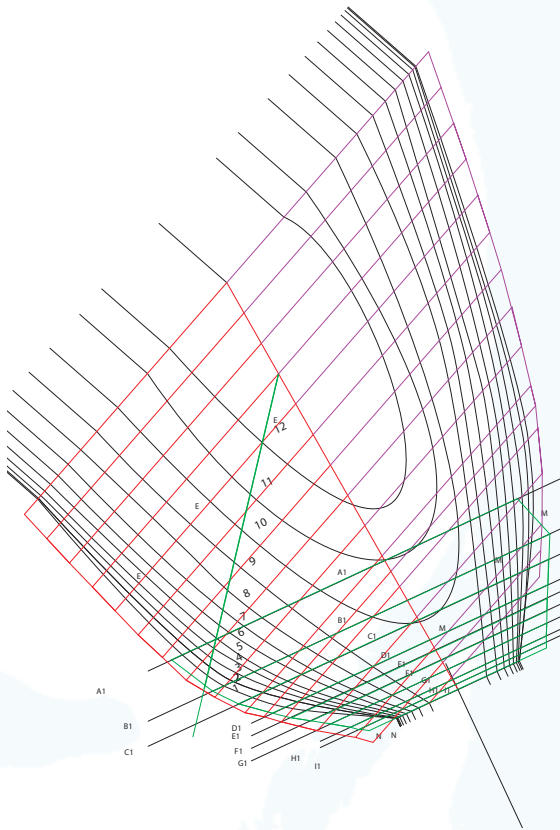
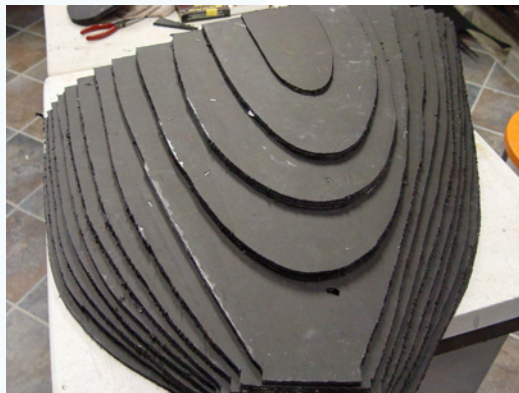
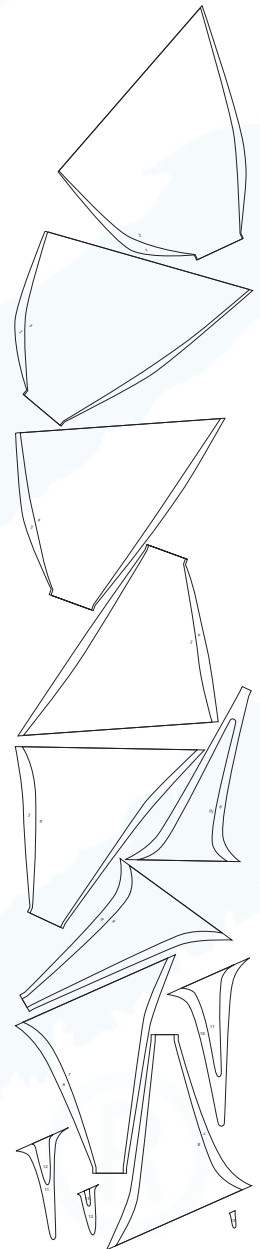


Making the Sail Vase



Originally designed using a computerized vector graphics program that balanced the volume on either side of its vertical axis for stability, the pre-model for this piece was created by assembling thin layers of cross sections and then making a plaster model from the resulting laminate.



Working plaster molds were then created into which the final object is slip cast, fired once to approximately 1800 degrees F and then hand – decorated by the artist, using underglazes



applied with fine-tipped bottles and finished in a spray booth with a transparent matte glaze. The object emerges from the final which

requires approximately 2100 degrees F to take the work to its final form. Creating this piece requires an overhead crane, but the resulting work is lightweight (approximately 6 pounds).



Bill Barker
Lori Barker