

Soft Deck

Soft Non Skid & HPEAFS

High-Performance, Energy-Absorbing Flooring System



HPEAFS (patent pending)

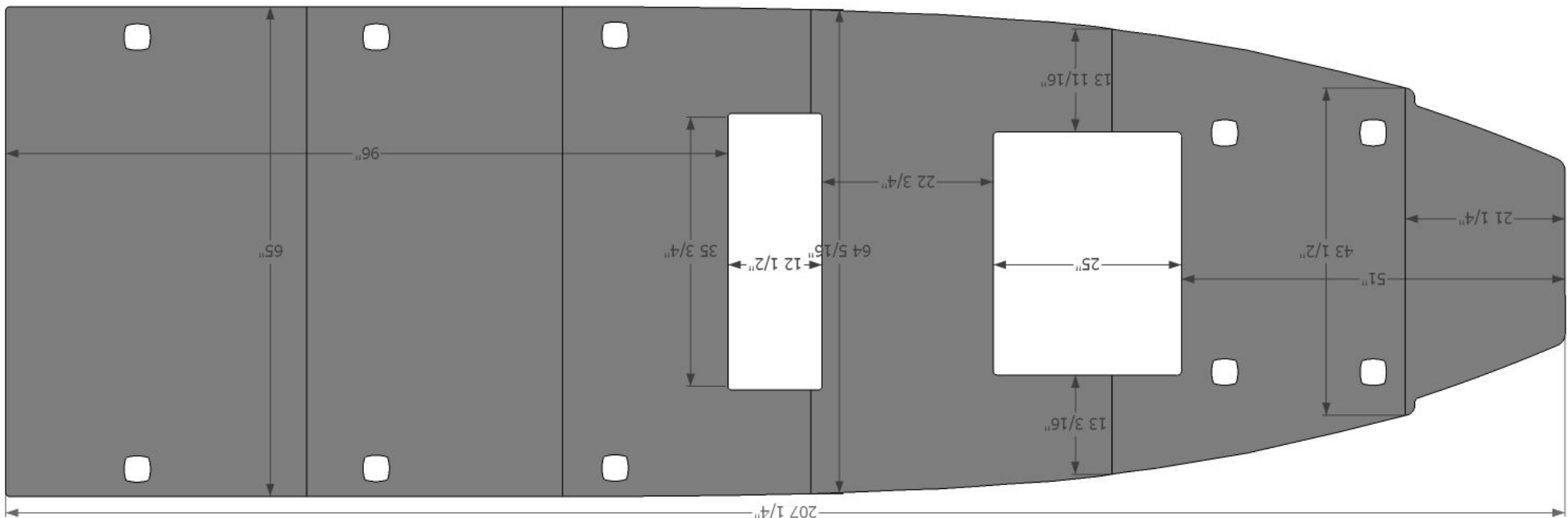
High-Performance, Energy-Absorbing Flooring System

- **Shock Mitigating**
Designed to protect against major, minor impacts and vibration.
- **Multiple Installation Methods**
Glue in
Installation blocks
Removable sections
- **CNC Cut To Any Size Or Shape**
Precision fitment
Easy reordering



HPEAFS Intended Uses

- Full Deck Covering HSC
- Helm Pads
- Crew Pads
- Gunnery Station Pads
- Ships Bridge



Laboratory Testing



The results show that our HPEAFS reduced the shock transmitted to our simulated sailor by approximately **50%** when averaging the results.



Shock transmissibility test setup under 220 pounds.

Shock Blow No.	Test Item	Weight (lbs)	Direction	Required Level (g)	Actual Level (g)	Peak Response (g)	Actual Duration (ms)
1	RShock 18M	170	Vertical +	3	2.968	1.792	10
2	RShock 18M	170	Vertical +	4	4.06	2.293	10
3	RShock 18M	170	Vertical +	5	5.183	2.761	10
4	RShock 18M	170	Vertical +	6	6.319	3.277	10
5	RShock 18M	170	Vertical +	7	7.393	3.731	10.2
6	RShock 18M	170	Vertical +	8	8.463	4.28	10
7	RShock 18M	170	Vertical +	9	9.558	4.935	10.2
8	RShock 18M	170	Vertical +	10	10.63	5.774	10
9	RShock 18M	220	Vertical +	3	3.007	1.569	10.4
10	RShock 18M	220	Vertical +	4	4.126	2.023	10.3
11	RShock 18M	220	Vertical +	5	5.239	2.438	10.3
12	RShock 18M	220	Vertical +	6	6.214	2.926	10.4
13	RShock 18M	220	Vertical +	7	7.368	3.467	10.3
14	RShock 18M	220	Vertical +	8	8.372	3.925	10.3
15	RShock 18M	220	Vertical +	9	9.54	4.589	10.3
16	RShock 18M	220	Vertical +	10	10.59	5.319	10.3
Totals					109.03	55.099	

Average Impact Transmitted 55.099 / 109.03 = 50.54%

HPEAFS Benefits

- **Closed Cell Construction**
Won't absorb or trap water
- **Progressively Increased Resistance**
Comfort
Vibration Protection
Minor and Major Impacts
- **Multiple Installation Methods**
Allows for installation in any area



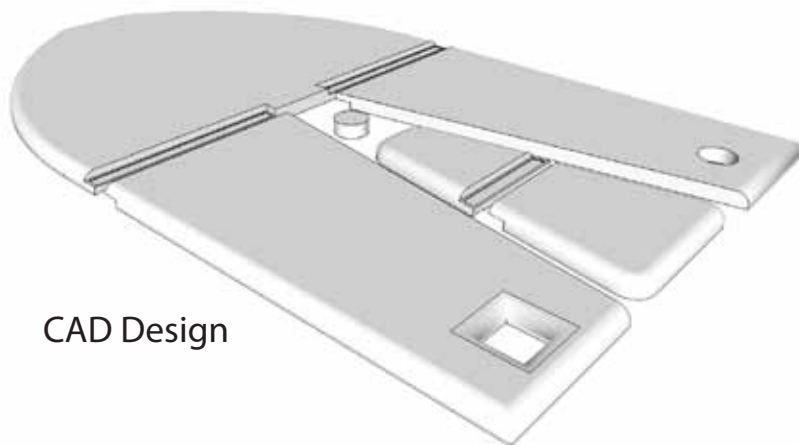
Side view of Soft Deck's Flooring System

HPEAFS Specifications

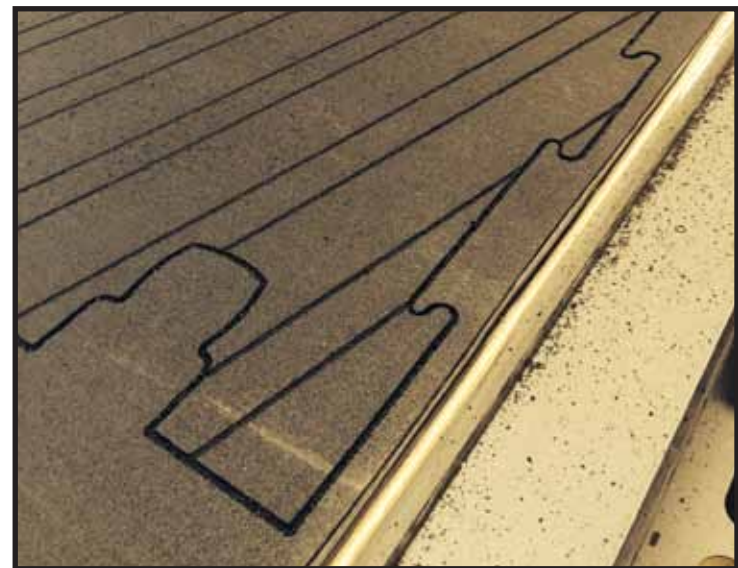
- 1.25" thick
- Multiple methods of attachment to the deck
- Soft non skid top layer
- Easily removable
- CAD designs and CNC manufacturing
- Easily retrofit and installed on craft in service
- Custom densities and thickness available
- Waterproof and positively buoyant
- Resistant to fuel, oil, and other harsh chemicals
- Easily cleans up with soap and water
- Will not grow mold



Two Joined Pieces



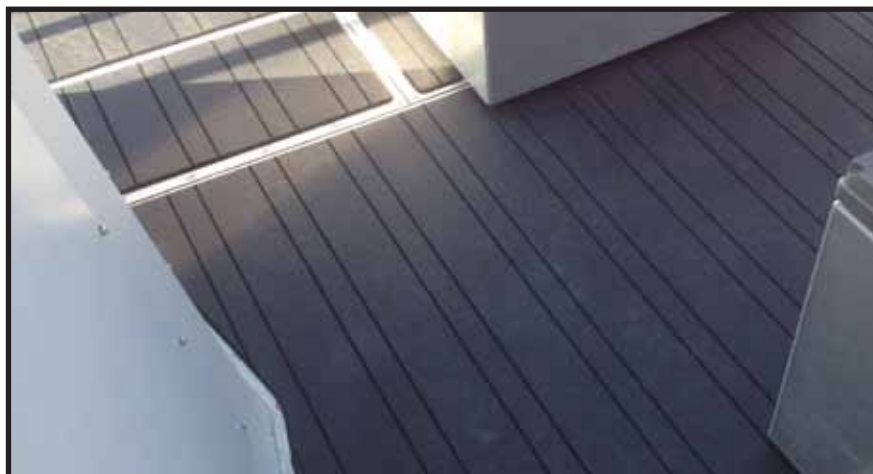
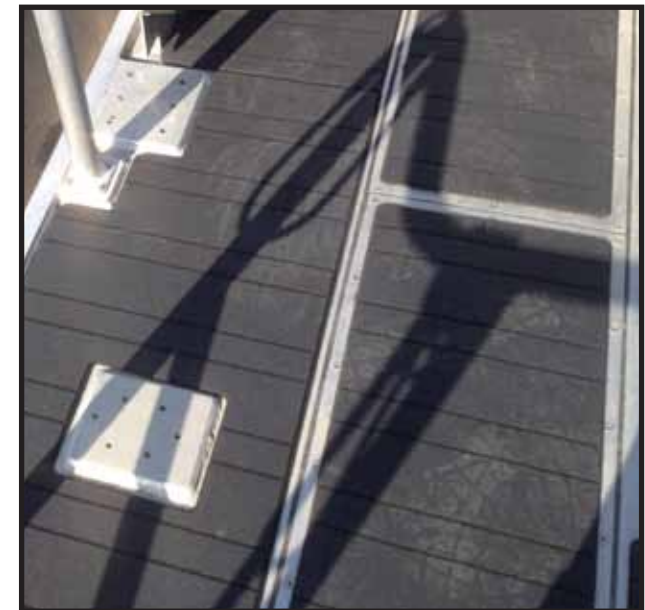
CAD Design



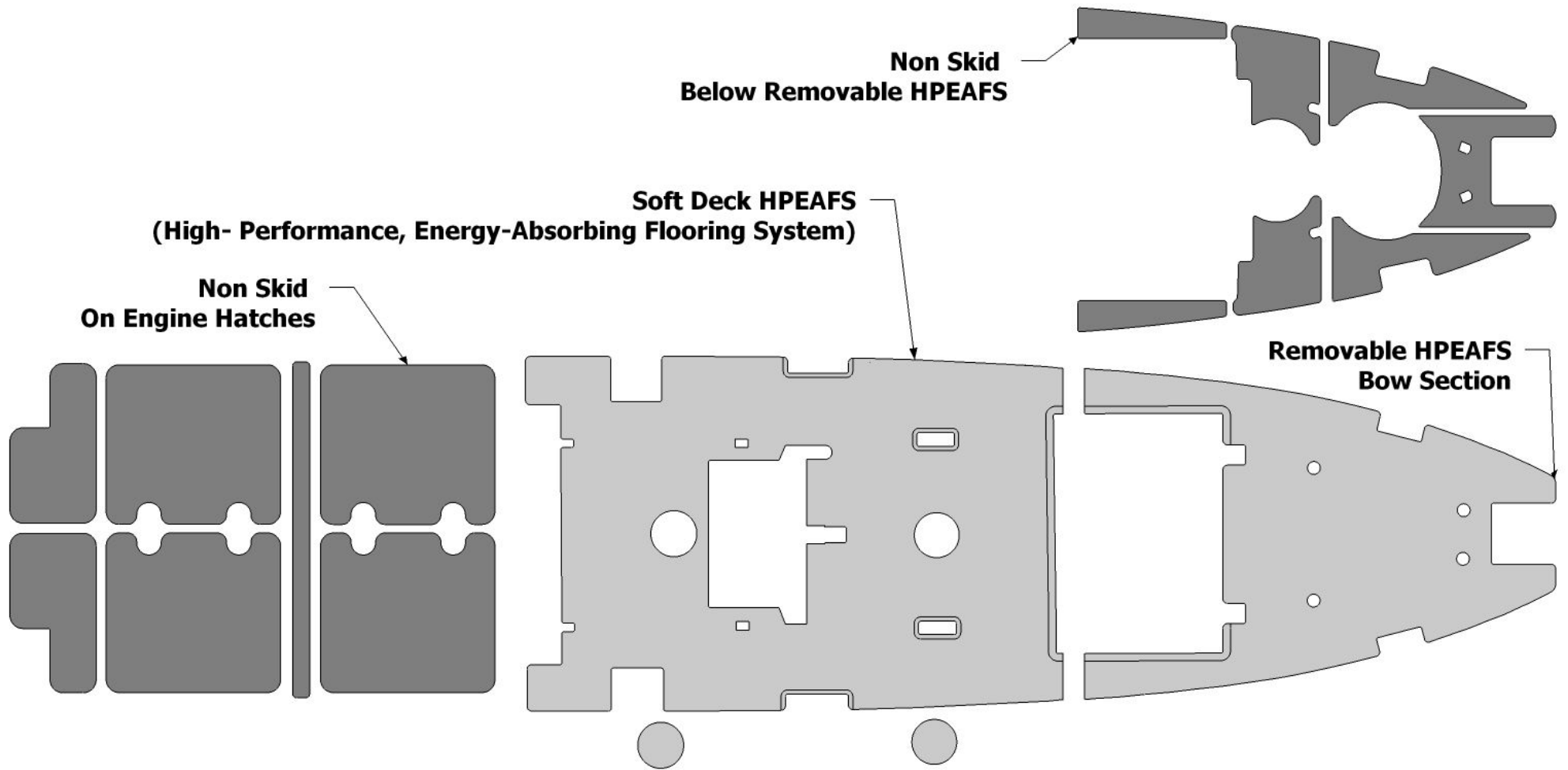
CNC Manufacturing

Soft Non Skid Specifications

- **1/4" thick**
- **Exceptional traction wet or dry**
- **Durable**
- **Protects both gear and deck**
- **Won't damage lines or wet suits**
- **Installs with contact cement, epoxy**
- **CAD designs and CNC manufacturing**
- **Easily retrofit and installed on craft in service**
- **Clean beveled edges**
- **Resistant to fuel, oil, and other harsh chemicals**
- **Easily cleans up with soap and water**
- **Will not grow mold**



Engineered Solutions



Soft Deck

Soft Non Skid & HPEAFS

High-Performance, Energy-Absorbing Flooring System

