



6459 DeSoto Avenue, Woodland Hills, CA 91367  
Phone: (818) 703-7493 · (800) 854-6951 Fax: (818) 703-7647  
order online [www.dennisuniform.com](http://www.dennisuniform.com)  
National Customer Service 800.854.6951

## WELCOME TO DENNIS

We look forward to working with you this year! Since 1920, DENNIS has sewn the best uniforms available in our Portland, Oregon factory. We are a family-owned business committed to quality, customer service, and education. Our goal is to have every student in uniform by the first day of school. If you need any help, please do not hesitate to contact our National Customer Service Department 800.854.6951.

## EASY WAYS TO SHOP

- ◆ Store, online, phone/fax/mail order.
- ◆ DENNIS accepts Visa, Mastercard, Discover & checks in US Dollars.
- ◆ Call National Customer Service for custom garments.

## ORDER ONLINE

- ◆ [www.dennisuniform.com](http://www.dennisuniform.com)
- ◆ Enter school code: **SH00AM**
- ◆ Or Scan QR code:



## NATIONAL CUSTOMER SERVICE

800.854.6951 fax 877.291.5480  
Hours: Monday-Friday 8am-5pm PST  
Extended summer hours

## RETURNS & EXCHANGES

DENNIS guarantees the quality of workmanship and fabrics on all garments.

Merchandise will be accepted for return or exchange within 90 days.

Merchandise must be accompanied by sales receipt, be unworn, unwashed, and unaltered, with tags intact.

There are no returns or exchanges on custom items.

Returns / exchanges / defective garments accepted at any branch store, or by mailing to:

DENNIS Uniform, 135 SE Hawthorne Blvd,  
Portland, Oregon 97214

National Customer Service 800.854.6951

UNIFORM PRICING EFFECTIVE 5/1/2015

## WOODLAND HILLS

818.703.7493 fax 818.703.7647

### REGULAR STORE HOURS

Tuesday-Thursday 11am – 6pm

Friday 10am – 3pm

Saturday 10am – 4pm

Labor Day 10am – 2pm

### EXTENDED SUMMER HOURS:

#### August 3-29

Monday-Friday 10am – 6pm

Saturday 10am – 5pm

*DENNIS stores are closed on major holidays and from Christmas to New Year's Day.*

### DIRECTIONS

From 101 Freeway, exit onto De Soto Ave. DENNIS is on the southwest corner of De Soto Ave and Victory Blvd. Entrance is off of De Soto Ave, just south of Victory Blvd.

### DENNIScrip, Gift Scrip & AFP Vouchers

- DENNIScrip is redeemable for merchandise at all DENNIS stores, on-campus sales and for online, phone and mail order purchases.
- Please note: only DENNIScrip with a barcode can be redeemed online or by phone.
- Maximum change given is \$5.00 in stores and at on-campus sales. We cannot make change on mail order purchases.
- DENNIScrip is good forever!



### DENNIS PROMOTIONS

All year long, DENNIS offers sales and specials for customers. Watch for changing promotions in your store and online!

To receive email notifications of our latest promotions & special offers, call National Customer Service 800.854.6951 or sign up online at [www.dennisuniform.com](http://www.dennisuniform.com).

# ST. CYRIL OF JERUSALEM SCHOOL

School Code: SH00AM

4548 Haskell Avenue ; Encino, CA 91436

## Girls, grades: PK-2 SHIFTS



Girls 3-20	\$47.75
Girls 6½-16½	\$48.75

Item #: 032890-201

Belair Plaid-Front zipper, tie tab (180)

Optional

## Girls, grades: 6-8 SKIRTS



Girls 3-20	\$45.50
Girls 6½-16½	\$46.50
Juniors 1-19	\$46.50
Juniors 21-25	\$46.50

Item #: 008680-201

Belair Plaid-Center box pleat (180)

6-8 Choice of skirt or skort required for Formal Uniform.No shorter than 3" above the back of the knee.

## Girls, grades: PK-8 SKORTS



Girls 3-20	\$47.00
Girls 6½-16½	\$53.00
Juniors 1-19	\$53.00
Juniors 21-25	\$53.00

Item #: 035210-201

Belair Plaid w/Tabs (180)

PK-5 Required for Formal Uniform.

## Girls, grades: PK-8 SKORTS



Girls 3-20	\$31.50
Girls 6½-16½	\$33.50
Juniors 1-19	\$33.50
Juniors 21-25	\$33.50

Item #: 035210-965

Skort-Navy Twill w/Tabs (069)

Optional

## Girls, grades: PK-2 BLOUSES



Youth 4-16	\$18.25
Adult S-2XL	\$19.25

Item #: 00080A-911

White BC S/S-Peter Pan Collar (119)

Optional; May be worn under shifts only

## Girls, grades: PK-7 POLO



Youth 2XS-XL	\$20.50
Adult XS-2XL	\$22.50

Item #: 08200A-YM7

GIRLS Dk Green Jersey S/S w/St. Cyril fiberlok (136)

Choice of Dk. Green Polo required for Formal Uniform. 8th grade has class polo.

## Girls, grades: PK-7 POLO



Youth 2XS-XL	\$20.50
Adult XS-2XL	\$22.50

Item #: 08220A-YM7

GIRLS Ash Pique S/S w/St. Cyril fiberlok (002)

Optional; Choice of Dk. Green Polo required for Formal Uniform. 8th grade has class polo.

## Girls, grades: PK-7 POLO



Youth 2XS-XL	\$20.50
Adult S-3XL	\$22.50

Item #: 08300A-YM7

Dk Green Jersey S/S w/St. Cyril fiberlok (136)

Choice of Dk. Green Polo required for Formal Uniform. 8th grade has class polo.

### Girls, grades: PK-7 POLO



Youth 2XS-XL	\$22.70
Adult S-3XL	\$24.70

Item #: 08300C-YM7

Dk Green Jersey L/S w/St. Cyril fiberlok (136)

**Choice of Dk. Green Polo required for Formal Uniform. 8th grade has class polo.**

### Girls, grades: PK-7 POLO



Youth 2XS-XL	\$20.50
Adult S-3XL	\$22.50

Item #: 08700A-YM7

Ash Pique S/S w/St. Cyril fiberlok (002)

Dk Green Pique S/S w/St. Cyril fiberlok (136)

**Optional; Choice of Dk. Green Polo required for Formal Uniform. 8th grade has class polo.**

### Girls, grades: PK-7 POLO



Youth 2XS-XL	\$22.70
Adult S-3XL	\$24.70

Item #: 08700C-YM7

Ash Pique L/S w/St. Cyril fiberlok (002)

Dk Green Pique L/S w/St. Cyril fiberlok (136)

**Optional; Choice of Dk. Green Polo required for Formal Uniform. 8th grade has class polo.**

### Girls, grades: PK-2 PANTS



Toddler 2-4	\$17.50
Youth XS-M	\$17.50

Item #: 044120-965

Pull on-Navy Twill (069)

**Optional**

### Girls, grades: PK-8 PANTS



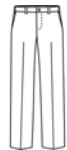
Girls 3-6X	\$29.00
Girls 7-20	\$31.00
Girls 6½-18½	\$33.00
Juniors 1-19	\$37.00
Juniors 21-25	\$37.00

Item #: 040330-998

Navy Flat Front Stretch (067)

**Optional**

### Girls, grades: PK-8 PANTS



Reg 3-6 or Slim 4-6	\$25.50
Reg 7-20 or Slim 7-16	\$27.50
Girls 6½-16½	\$27.50
Juniors 1-21	\$31.75

Item #: 040390-962

Girls-Irvington Flat Front-Navy Twill (067)

**Optional**

### Girls, grades: PK-8 WALK SHORTS



Girls 3-6X	\$15.75
Girls 6½-18½	\$20.50

Item #: 024440-997

Girls Bermuda FF-Navy 97C/3S (067)

**Optional**

### Girls, grades: PK-8 WALK SHORTS



Girls 3-6X	\$22.00
Girls 7-20	\$24.50
Girls 6½-18½	\$25.50
Juniors 1-19	\$28.50
Juniors 21-25	\$28.50

Item #: 040320-998

Navy Knee Length FF Stretch (067)

**Optional**

### Girls, grades: PK-2 PULL ON SHORT



Toddler 2-4	\$15.50
Youth XS-M	\$15.50

Item #: 035290-965

Pull on Short-Navy Twill (069)

Optional

### Girls, grades: PK-8 SWEATSHIRT



Youth 2XS-XL	\$25.00
Adult S-3XL	\$29.25

Item #: 093000-YM7

Sweatshirt 1/4 Zip - Dk Green w/St. Cyril fiberlok (136)

All outerwear must have school logo.

### Girls, grades: PK-8 CARDIGAN



Youth 2XS-XL	\$38.85
Adult S-XL	\$43.30
Adult 2XL-3XL	\$48.85

Item #: 063000-YM7

Green V-Neck w/St. Cyril fiberlok (039)

Optional

### Girls, grades: PK-8 SWEATPANT 9oz



Youth 3XS-XL	\$23.00
Adult S-3XL	\$26.00

Item #: 090410-YM5

Navy w/St. Cyril of Jerusalem screen (067)

Starting 2015/2016 May be worn Nov-Feb and Spirit Days, may not be worn on Formal Days.

---

### Girls, grades: PK-8 JACKETS



Youth XS-L	\$46.30
Adult XS-XL	\$53.85
Adult 2XL-3XL	\$56.35

Item #: 037000-YM7

Hooded Microfibre -Dk Green w/St. Cyril fiberlok (136)

All outerwear must have school logo. Paid orders only.

---

### Girls, grades: PK-8 FLEECE JACKET



Youth 2XS-XL	\$40.30
Adult S-3XL	\$50.30

Item #: 054000-YM7

Forest Green Microfleece Jacket-front zipper w/St. Cyril fiberlo (035)

All outerwear must have school logo. Paid orders only.

---

### Girls, grades: PK-8 ACCESSORIES



One size	\$5.95
----------	--------

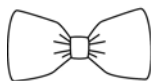
Item #: 004880-201

Padded Headband-Belair Plaid (180)

Belair Plaid or Dark Green hair accessories only.

---

### Girls, grades: PK-8 ACCESSORIES



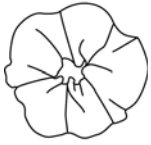
One size	\$4.95
----------	--------

Item #: 005070-201

Hairbow-Belair Plaid (180)

Belair Plaid or Dark Green hair accessories only.

### Girls, grades: PK-8 ACCESSORIES



One size \$5.95

Item #: 005090-201

Scrunchy-Belair Plaid (180)

**Belair Plaid or Dark Green hair accessories only.**

### Girls, grades: PK-8 ACCESSORIES



Youth 2XS-XL \$12.95  
Adult XS-XL \$15.50

Item #: 035340-909

Bike Shorts-Dk Navy (025)

### Boys, grades: PK-7 POLO



Youth 2XS-XL \$20.50  
Adult S-3XL \$22.50

Item #: 08300A-YM7

Dk Green Jersey S/S w/St. Cyril fiberlok (136)

**Choice of Dk. Green Polo required for Formal Uniform. 8th grade has class polo.**

### Boys, grades: PK-7 POLO



Youth 2XS-XL \$22.70  
Adult S-3XL \$24.70

Item #: 08300C-YM7

Dk Green Jersey L/S w/St. Cyril fiberlok (136)

**Choice of Dk. Green Polo required for Formal Uniform. 8th grade has class polo.**

### Boys, grades: PK-7 POLO



Youth 2XS-XL \$20.50  
Adult S-3XL \$22.50

Item #: 08700A-YM7

Ash Pique S/S w/St. Cyril fiberlok (002)

Dk Green Pique S/S w/St. Cyril fiberlok (136)

**Optional; Choice of Dk. Green Polo required for Formal Uniform. 8th grade has class polo.**

### Boys, grades: PK-7 POLO



Youth 2XS-XL \$22.70  
Adult S-3XL \$24.70

Item #: 08700C-YM7

Ash Pique L/S w/St. Cyril fiberlok (002)

Dk Green Pique L/S w/St. Cyril fiberlok (136)

**Optional; Choice of Dk. Green Polo required for Formal Uniform. 8th grade has class polo.**

### Boys, grades: PK-2 PANTS



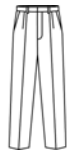
Toddler 2-4 \$17.50  
Youth XS-M \$17.50

Item #: 044120-965

Pull on-Navy Twill (069)

**Choice of Navy pant or short required for Formal Uniform.**

### Boys, grades: PK-8 PANTS



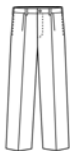
Reg 3-7 or Slim 3-7 \$24.00  
Reg 8-16 or Slim 8-16 \$27.25  
Husky 25-38 \$32.50  
Prep 26-32 \$31.50  
Mens 33-44 \$33.50

Item #: 070000-964

Boys Navy Rassler Twill-Pit Frt-DENNIS Durables (067)

**While supplies last; Choice of Navy pant or short required for Formal Uniform.**

### Boys, grades: PK-8 PANTS



Reg 3-7 or Slim 4-7	\$24.00
Reg 8-16 or Slim 8-16	\$27.25
Husky 8-32	\$32.50
Prep 27-32	\$31.50
Mens 33-48	\$33.50

Item #: 071000-962

Boys-Hawthorne Plt Front - Navy Twill (067)

Available May 2015. Choice of Navy pant or short required for Formal Uniform.

### Boys, grades: PK-8 PANTS



Reg 3-7 or Slim 3-7	\$24.00
Reg 8-16 or Slim 8-16	\$27.25
Husky 25-38	\$32.50
Prep 27-32	\$31.50
Mens 33-48	\$33.50

Item #: 075500-964

Boys Navy Twill-Rlxd Fit -Flat Frt (067)

While supplies last; Choice of Navy pant or short required for Formal Uniform.

### Boys, grades: PK-8 PANTS



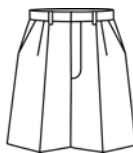
Reg 3-7 or Slim 4-7	\$24.00
Reg 8-16 or Slim 8-16	\$27.25
Husky 26-38	\$32.50
Prep 27-32	\$31.50
Mens 33-48	\$33.50

Item #: 077000-962

Boys-Irvington Flat Front - Navy Twill (067)

Choice of Navy pant or short required for Formal Uniform.

### Boys, grades: PK-8 WALK SHORTS



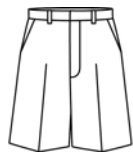
Reg 3-7 or Slim 3-7	\$21.00
Reg 8-16 or Slim 8-16	\$24.50
Husky 26-38	\$29.00
Prep 26-32	\$29.00
Mens 33-44	\$30.00

Item #: 040600-964

Boys Navy Ressler Twill Pltd Frt (067)

Choice of Navy short or pant required for Formal Uniform. May not be worn longer than top of the knee. While supplies last

### Boys, grades: PK-8 WALK SHORTS



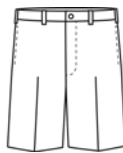
Reg 3-7 or Slim 3-7	\$21.00
Reg 8-16 or Slim 8-16	\$24.50
Husky 26-38	\$29.00
Prep 27-32	\$29.00
Mens 33-48	\$30.00

Item #: 040620-964

Boys Navy Twill Flat Front (067)

Choice of Navy short or pant required for Formal Uniform. May not be worn longer than top of the knee. While supplies last

### Boys, grades: PK-8 WALK SHORTS



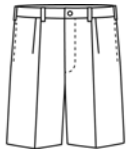
Reg 3-7 or Slim 4-7	\$21.00
Reg 8-16 or Slim 8-16	\$24.50
Husky 26-38	\$29.00
Prep 27-32	\$29.00
Mens 33-48	\$30.00

Item #: 040720-962

Boys-Irvington Flat Front-Navy Twill (067)

Choice of Navy short or pant required for Formal Uniform. May not be worn longer than top of the knee.

### Boys, grades: PK-8 WALK SHORTS



Reg 3-7 or Slim 4-7	\$21.00
Reg 8-16 or Slim 8-16	\$24.50
Husky 8-32	\$29.00
Prep 27-32	\$29.00
Mens 33-48	\$30.00

Item #: 040900-962

Boys-Hawthorne Plt Front-Navy Twill (067)

Available May 2015. Choice of Navy short or pant required for Formal Uniform. May not be worn longer than top of the knee

### Boys, grades: PK-2 PULL ON SHORT



Toddler 2-4	\$15.50
Youth XS-M	\$15.50

Item #: 035290-965

Pull on Short-Navy Twill (069)

Choice of Navy short or pant required for Formal Uniform.

### Boys, grades: PK-8 CARDIGAN



Youth 2XS-XL	\$38.85
Adult S-XL	\$43.30
Adult 2XL-3XL	\$48.85

Item #: 063000-YM7

Green V-Neck w/St. Cyril fiberlok (039)

Optional

### Boys, grades: PK-8 SWEATSHIRT



Youth 2XS-XL	\$25.00
Adult S-3XL	\$29.25

Item #: 093000-YM7

Sweatshirt 1/4 Zip - Dk Green w/St. Cyril fiberlok (136)

All outerwear must have school logo.

### Boys, grades: PK-8 SWEATPANT 9oz



Youth 3XS-XL	\$23.00
Adult S-3XL	\$26.00

Item #: 090410-YM5

Navy w/St. Cyril of Jerusalem screen (067)

Starting 2015/2016 May be worn Nov-Feb and Spirit Days, may not be worn on Formal Days.

### Boys, grades: PK-8 JACKETS



Youth XS-L	\$46.30
Adult XS-XL	\$53.85
Adult 2XL-3XL	\$56.35

Item #: 037000-YM7

Hooded Microfibre -Dk Green w/St. Cyril fiberlok (136)

All outerwear must have school logo. Paid orders only.

### Boys, grades: PK-8 FLEECE JACKET



Youth 2XS-XL	\$40.30
Adult S-3XL	\$50.30

Item #: 054000-YM7

Forest Green Microfleece Jacket-front zipper w/St. Cyril fiberlo (035)

All outerwear must have school logo. Paid orders only.





# STUDENTS' BODY MEASUREMENTS

## HOW TO MEASURE

chest/bust: fullest part  
 waist: traditional waist, the narrowest part; all style sizes are scaled to this measurement  
 hips: stand heels together; fullest part  
 rise: bottom of waistband at the back around crotch to bottom of waistband front  
 waist length: from nape of neck to waist  
 inseam: from crotch to top of shoe  
 skirt length: from bottom of waistband

## SPECIAL SIZES

require these measurements:  
 jumpers: bust/ waist/ hip/ skirt length/ waist length  
 skirts/skort: waist/ hip/ skirt length  
 pants: waist/ hip/ inseam  
 walk shorts: waist/ hip/ walk short length

## BOYS' PANTS & WALK SHORTS\*

boys' size	waist	short length	pant inseam
3	21.5	12	14.5
4 slim	20	—	16
4	22	12.5	16
5 slim	20.5	—	17.5
5	22.5	13	17.5
6 slim	21	—	19.5
6	23	13.5	19.5
7 slim	21.5	—	20
7	23.5	14	20
8 slim	22	—	21.5
8	24	15	21.5
9 slim	22.5	—	23
9	24.5	—	23**
10 slim	23	—	24
10	25	16.5	24
11 slim	23.5	—	25**
11	25.5	—	25
12 slim	24	—	26.5
12	26	17.25	26.5
14 slim	25	—	28
14	27	17.75	28
16 slim	26	—	29.5
16	28	17.75	29.5

\*Sizes 4-10 have elastic in back waistband.  
 \*\*Sizes 9 & 11 not available in walk shorts.

## HUSKY/PREP/MEN'S PANTS & WALK SHORTS

waist size	husky shorts length	prep shorts length	husky pants inseam	prep pants inseam	men's pants inseam
26*	14.25	19**	21.5	—	—
27*	15.75	19	22.5	32	—
28*	16.25	19.25	24	32	—
29*	16.75	19.5	25.5	32	—
30*	17.25	19.75	27	32	—
31	17.75	20	27.5	32	—
32	18.25	20.25	28.5	32	—
33***	18.75	20.5	29.5	—	36
34	19.25	20.75	29.5	—	36
36	19.75	21.25	30.5	—	36
38	—	21.75	31.5	—	36
40	—	22.25	—	—	36
42	—	22.5	—	—	36
44	—	22.75	—	—	36

\*Husky sizes 26-30 have elastic in waistband.  
 \*\*Twill walk shorts only.  
 \*\*\*Men's waist size 33" and up are 36" unhemmed.

## T-SHIRTS, JACKETS & SWEATSHIRTS

youth size	t-shirts garment size	jackets/sweatshirts garment size
XS	4-5	2-4
S	6-8	6-8
M	10-12	10-12
L	14-16	14-16
XL	18-20	18-20
adult size garment size		
S	34-36	
M	38-40	
L	42-44	
XL	46-48	

## GYM SHORTS & SWEATPANTS

youth size	gym shorts waist	sweatpants waist
S	21-22	22-24
M	23-24	24-26
L	25-26	26-28
adult size gym shorts waist sweatpants waist		
XS	24-26	N/A
S	28-30	30-32
M	32-34	34-36
L	36-38	38-40
XL	40-42	42-44

## PULL-ON PANTS & SHORTS

youth size	waist	pants inseam
2XS	21-22	16
XS	22-23	19
S	23-24	22
M	25-26	25
L	27-28	27
XL	29-30	28
adult size waist pants inseam		
XS	25-27	31.5
S	28-30	32
M	31-33	32.5
L	34-36	33
XL	37-39	33.5
2XL	40-42	34

## SHIRTS

youth size	chest
4	22
6	24
8	26
10	28
12	30
14	32
16	34
18	36
20	38
adult size neck sleeve length*	
S	14.5 32
M	15.5 33
L	16.5 34
XL	17.5 35
2XL	18.5 36

\*Long sleeve oxford only.

## KNIT SHIRTS

youth size	chest
2XS	23
XS	25
S	27
M	29
L	32
XL	35
adult size chest	
S	35
M	38
L	42
XL	46
2XL	50
3XL	54

## SWEATERS

youth size	chest
2XS	23
XS	25
S	27
M	29
L	32
XL	35
adult size chest	
S	35
M	38
L	42
XL	46

## GIRLS' JUMPERS, SKIRTS & SKORTS, PANTS & WALK SHORTS

### students' body measurements length by style

size	chest	waist	hip	skirt length	3521 skort length*	walk shorts length	4040 pants inseam	4030 flat-front pants inseam
G3	23	21	24	11	10.25	10.25	15.25	19.25
G4	24	22	25	12	10.75	11	16.75	20.25
G5	24.5	22.5	26	13	11.5	11.75	18.5	21.25
G6	25	23	26.5	14	12	12.5	20.25	22.25
G6x		23.5	27		12.75	13.25	22	23.25
G7	26	23.5	27.5	15	14.75	14	24	24
G8	27	24	28.5	16	15.25	14.75	25.5	25.5
G10	29	25	30.5	17	15.75	15.5	26.5	27.75
G12	30.5	26	33	18	16.5	16.5	27	28.25
G14	32	27	35	19	17	17.5	27.75	29
G16	34	28	37	20	17.75	18.25	28	29.25
G18	36	29	39	20	18.5	19	28	29.25
G20	38	30	41	20	18.75	19.25	28	29.25

### Half (plus) sizes

H6.5	27	25	28.5	14	12.75	12.5	20.25	—
H8.5	29	26	30.5	16	15.25	14.75	25.5	—
H10.5	31	27	32.5	17	15.75	15.5	26.5	—
H12.5	32.5	28	35	18	16.5	16.5	27	—
H14.5	34	29	37	19	17	17.5	27.75	—
H16.5	36	30	39	20	17.75	18.25	28	—

\*3550 longer skort measures 3" longer.

**Girls' Pleat-front Pants (#4040)** are available in slim sizes. Slim sizes run 2" smaller in waist and hips than regular sizes and are available in sizes S4, S5, S6, S7, S8, S10, S12, S14, S16.

## JUNIORS' SKIRTS, SKORTS, PANTS & WALK SHORTS

### students' body measurements length by style

juniors' size	waist	hip	skirt length	3521 skort length*	walk shorts length	4040 pants inseam	4030 flat-front pants inseam
J1	25	35.5	19	17.5	16.25	30.75	32.25
J3	26	36.5	19	17.75	16.5	30.75	32.25
J5	27	37.5	19	18	16.75	31	32.5
J7	28	38.5	20	18.25	17	31.25	32.5
J9	29	39.5	20	18.5	17.25	31.25	32.75
J11	30	40.5	20	18.75	17.5	31.25	32.75
J13	31.5	42	20	19	17.75	31.25	32.75
J15	33	43.5	21	19.25	18	31.5	33
J17	34.5	45	21	19.5	18.25	31.5	33
J19	36	46.5	21	19.75	18.5	31.75	33.25

\*3550 longer skort measures 3" longer.

## GIRLS' BLOUSES\*

size	blouse chest	butterfly/camp shirt chest only
G3	22	23
G4	23	24
G5	—	24.5
G6	24	25
G6x	—	25.5
G7	—	26
G8	25	27
G10	27	29
G12	29	30.5
G14	31	32
G16	33	34

\*Order same size as jumper or skirt.

## JUNIORS' & WOMEN'S BLOUSES

juniors' size	camp shirt chest	women's size	blouse chest
J1	34	S	30-32
J3	35	M	34-36
J5	36	L	38-40
J7	37	XL	42-44
J9	38	2XL	46-48
J11	39	3XL	50-52
J13	40.5		
J15	42		
J17	43.5		
J19	45		

## GIRLS' POLO SHIRT\*

size	chest	length of garment
2XS	22	16
XS	24	17
S	26	18
M	27	19.5
L	29	21
XL	31	22

\*Garment is styled to have a trim fit.

## JUNIORS' POLO SHIRT\*

size	chest	length of garment
XS	35	23.5
S	37	24.5
M	39	25
L	41	26
XL	44	26.5
2XL	47	27

\*Garment is styled to have a trim fit.

## SOCKS

sock size	shoe size	approx. age
XS (6-7.5)	youth 7.5-11.5	3-5 years
S (7-8.5)	youth 9-adult 2.5	4-7 years
M (8-9.5)	youth 12-adult 5.5	6-9 years
L (9-11)	adult 4-10	10 & up
XL (10-12)	adult 6-11	tall girl
XL (10-13)	adult 6-12	men's

## TIGHTS

tights size (approx. age)	height	weight
XS (2-4)	33-38"	28-38#
S (4-6)	39-45"	38-50#
M (6-8)	45-51"	50-62#
L (8-10)	51-56"	62-74#
XL (10-14)	56-64"	74-110#
petite	5'1"-5'5"	95-130#
average	5'3"-5'7"	125-160#
tall	5'7"-6'0"	155-180#