

## Thank You to Our Generous Supporters

Abram & Ray Kaplan Foundation  
Allman Brothers Band / Live Nation  
Anonymous (3)  
Rose M. Badgley Residuary Charitable Trust  
Barham Family Foundation  
Barker Welfare Foundation  
Bomar Ministries  
The Robert Bowne Foundation  
The Bulova-Stetson Fund  
Camp Scatico  
Citizens Committee for New York City  
ConEdison  
The Daphne Foundation  
Direct Access Group Benefits  
Elephant Rock Foundation  
The Elkes Foundation  
Ethical Culture Fieldston School  
Evangelical Lutheran Church of the Advent  
Fort Washington Collegiate Church  
The Charles A. Frueauff Foundation  
Gold Family Foundation  
Clara & Kurt Hellmuth Foundation  
Marble Collegiate Church  
The McReynolds Family Foundation  
The Metzger-Price Fund  
The Pinkerton Foundation  
Public Allies

The Rau Foundation  
The Stephen and May Cavin  
Leeman Foundation  
The SHAPE Fund  
Jean L. and Robert A. Stern Foundation  
TD Charitable Foundation  
Tombstones Productions, Inc.  
TransCanada Corporation  
United Palace Cathedral  
United Way of NYC Community Grant Program  
United Way of Central Ohio  
United Way of Columbus Ohio

### Government Funding

Emergency Food and Shelter National  
Board Program  
Manhattan Borough President Scott Stringer  
NYC Council Member Gale Brewer  
NYC Council Member Robert Jackson  
NYC Council Member Ydanis Rodriguez  
NYC Dept. for the Aging  
NYC DYCD - OST Program  
NYC DYCD - SYEP Program  
NYS Dept. of Health - CACFP  
NYS Dept. of Health - HPNAP  
US Dept. of Agriculture - TEFAP

## Board of Directors

### Edward Lehmann – Chair

Vice President  
Citi Hedge Fund Services

### Judd Henry – Secretary

Associate, Litigation  
Paul, Weiss, Rifkind, Wharton, & Garrison

### Marcela Shine

Sr. Vice President - Operations  
Perform Line Inc.

### Gary Kreissman

Founder  
Group PRM

### Otto Lombardo

Managing Director  
Lombardo & Company

### Lewis Schiff – Vice Chair

Executive Director  
Inc. Magazine's Business Owners Council

### Steven Elkes – Treasurer

Trustee  
The Elkes Foundation

### Hal Malone

Vice President  
Jefferies & Company

### Rebecca Sale, MPH

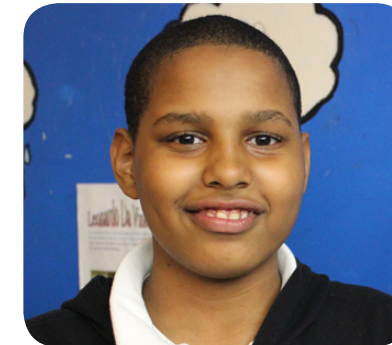
Director, Executive and Part-Time MPH  
Programs  
Columbia University  
Mailman School of Public Health

CELEBRATING  
20 YEARS OF  
SERVING  
YOUTH  
and  
COMMUNITY

**FRESH YOUTH**  
INITIATIVES  
505 W. 171st Street  
New York, NY 10032  
info@freshyouth.org  
Tax ID 13-3723207

**FRESH YOUTH**  
INITIATIVES

DEVELOPING YOUTH. IMPACTING COMMUNITY.



Follow us:



Annual Report 2013  
Fiscal Year 6/1/2012 - 5/31/2013



*A Message from Steve*

Dear FYI Family,

This year's report is a celebration of you, our supporters. One simple yet profound idea grew into what FYI is today because of caring people like you who believe in the idea that all young people should be given the tools to develop their potential; to become meaningful contributors in their communities; and to lead fulfilled, productive lives.

During our fiscal year 2012-2013, more than 300 young people spent over 12,000 hours with FYI doing volunteer work, getting academic support, learning new skills, and gaining exposure to enriching and positive experiences. Thanks to your support, FYI continues to improve its programs to better serve the youth who rely on us.

Our report this year is short and sweet; I hope you enjoy it. Thanks for your time, your attention, and for being a part of the FYI family.

Yours in Service,

Esteban "Steve" Ramos, MSW  
Executive Director



*"FYI helped me learn that I am much greater than what I think I am and sparked my passion to help others through service."*

Luis A. Tapia, FYI Alum  
Director, William J. Duncan Center, PAL



*"FYI is really a life changing organization that I am very thankful for... FYI is one of the best things in my life right now."*

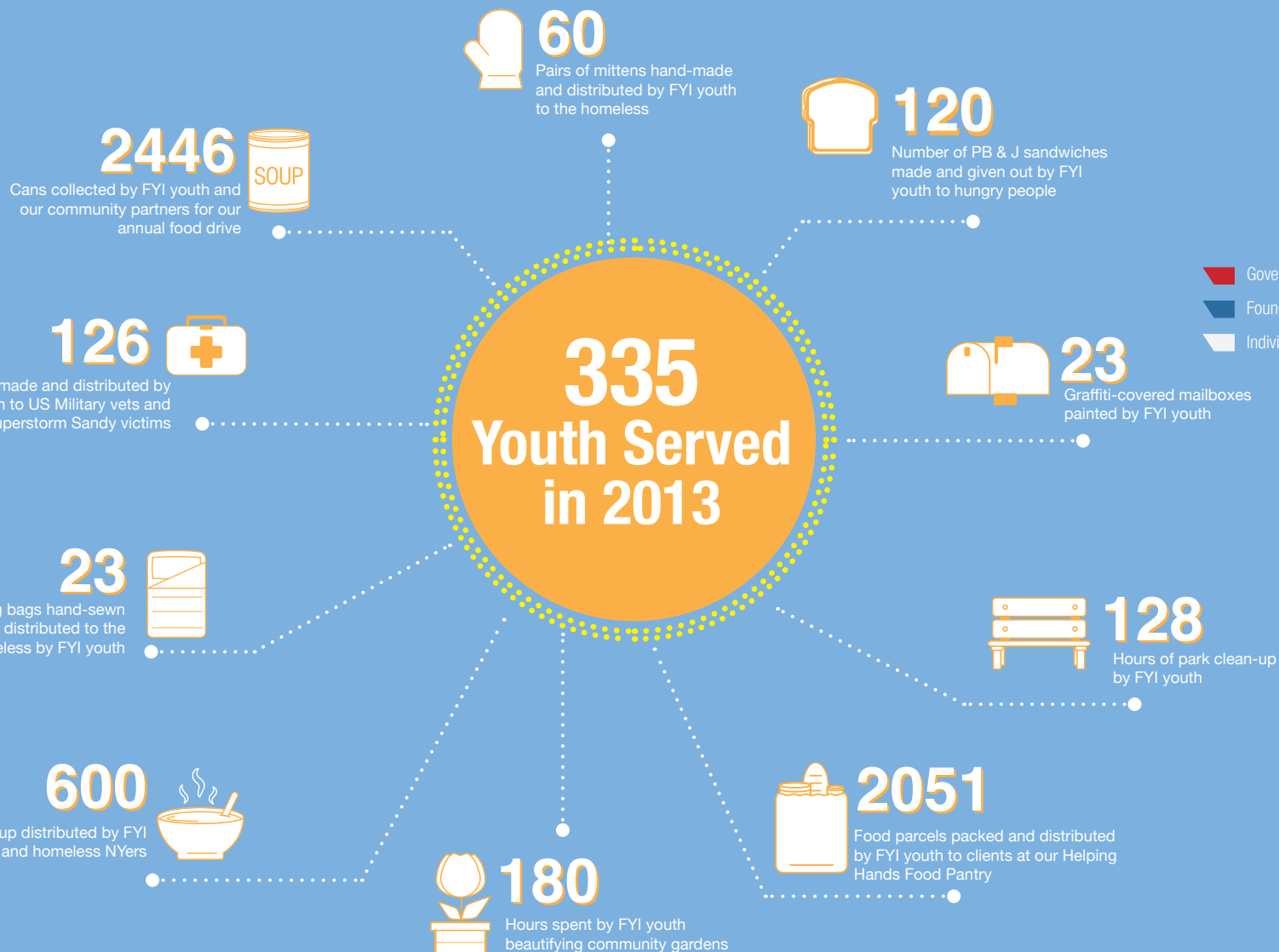
Caitly, FYI participant



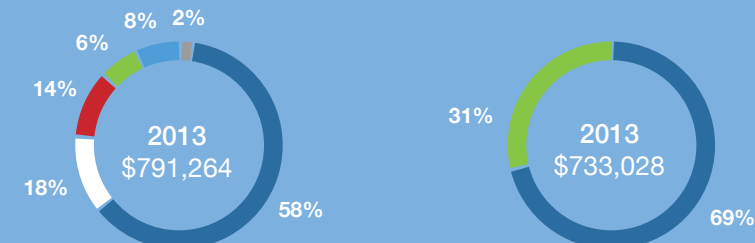
*"I really enjoy coming to FYI because every day it's a new experience for me; FYI keeps me motivated and on track in my school work... I can say that FYI really changed my life because it kept me away from the streets."*

Richard, FYI Youth Leader

**335**  
Youth Served in 2013



**Financial Statement**



**Revenue**

- Government - \$101,270
- Foundations - \$427,614
- Individual - \$139,685
- Corporate - \$44,950
- Other/Misc - \$64,995
- In-Kind - \$12,750

**Operating Expenses**

- Program Services - \$503,369
- Supporting Services - \$229,659

|                                       | 2013               | 2012               |
|---------------------------------------|--------------------|--------------------|
| <b>Assets</b>                         |                    |                    |
| Cash & Cash Equivalents               | \$112,019          | \$87,473           |
| Investments                           | \$164,615          | \$171,166          |
| Fixed Assets/Other                    | \$3,237,091        | \$3,298,627        |
| <b>Total Assets</b>                   | <b>\$3,513,725</b> | <b>\$3,557,266</b> |
| <b>Liabilities</b>                    |                    |                    |
| Accts. Payable & Accrued Expenses     | \$19,461           | \$18,830           |
| <b>Total Liabilities</b>              | <b>\$19,461</b>    | <b>\$18,830</b>    |
| <b>Net Assets</b>                     |                    |                    |
| Unrestricted                          | \$3,289,437        | \$3,383,223        |
| Temporarily Restricted                | \$53,077           | \$3,463            |
| Permanently Restricted                | \$151,750          | \$151,750          |
| <b>Total Net Assets</b>               | <b>\$3,494,264</b> | <b>\$3,538,436</b> |
| <b>Statement of Activities/Income</b> |                    |                    |
| Private Grants & Contributions        | \$785,804          | \$766,605          |
| Other Revenue                         | \$5,820            | \$4,426            |
| <b>Total Revenue &amp; Support</b>    | <b>\$791,264</b>   | <b>\$771,031</b>   |
| <b>Expenses</b>                       |                    |                    |
| Program Expenses                      | \$503,369          | \$611,970          |
| Management & General                  | \$74,484           | \$66,586           |
| Fund Raising                          | \$155,175          | \$107,051          |
| <b>Total Expenses</b>                 | <b>\$733,028</b>   | <b>\$785,607</b>   |
| <b>Operating Income (Deficit)</b>     |                    |                    |
| Depreciation                          | \$102,408          | \$100,636          |
| Net Deficit                           | (\$44,172)         | (\$115,212)        |

FYI serves record numbers of youth this year with upwards of 65 participants attending the Afterschool program daily. The Service-Learning program serves another 60 for the year. The Welcome Program, serving recent immigrants in elementary school, serves an additional 22 students.

Superstorm Sandy blows through NY. FYI partners with 2 NYC organizations, supporting their efforts with food, aid, and "kid-power." Two longtime out-of-state funders (Abram & Ray Kaplan and Charles A. Frueauff) support our efforts with emergency relief funding, enabling us to make a bigger impact.

Mad Science concentration takes off, thanks to funding from ConEdison. The program team also launches FYI Clubs, giving youth opportunities to choose and explore new activities and areas of learning.

FYI's absorption of the Cornerstone Learning Center is finalized by the NY State Attorney General's office. Corporate supporter TransCanada reinvests in FYI. Steve attends a press conference led by the Puerto Rican Family Institute, SOMOS, and the Hispanic Federation to address the needs and close the gap for Latino mental health.

Steve is a panelist at the Aspen Institute forum, "Building Community and Breaking Poverty," in D.C. Later that month, he and 2 staff members are interviewed on a popular Univision program, "En Tu Comunidad."

**September**

**July**

Summer Camp and Summer Job Training programs operate at full capacity. Youth new to FYI want to stay on for the school year.

**October**

FYI is named Organization of the Year by the United Palace Cathedral. Columbia University's Institute for Human Nutrition works with FYIers; they learn to read food labels, visit local farmers markets, and cook up healthy snacks.

**November**

**December**

Our college-readiness pilot program, Aspire, in its second year, increases in frequency from monthly to weekly.

**January**

**February**

FYI is accepted into the competitive Youth, I.N.C. Celebration program. Steve talks about FYI on the Radio Disney program, "Kids Concerns."

**March**

**April**

A special MPH seminar class from Columbia University takes on FYI as their rebranding and marketing seminar project, in preparation for our 20th anniversary next year.

**May**