

O r b i X

PRINTING PADS

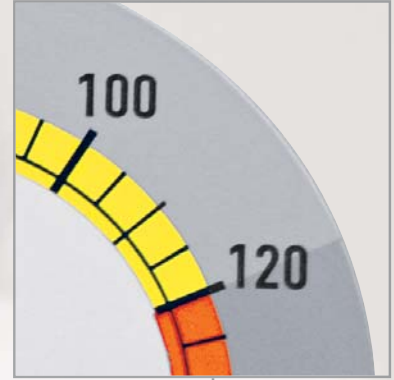
OrbiX – Characteristics



PRECISION



PERFECTION

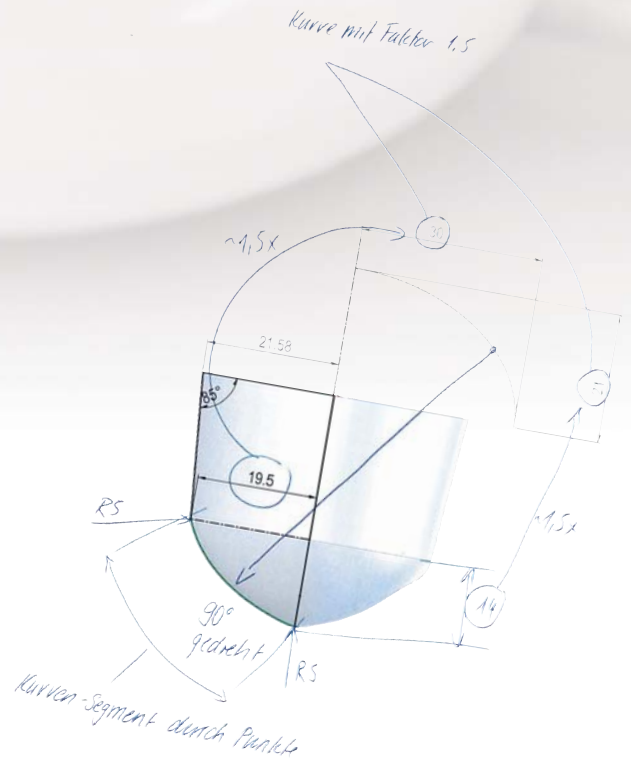


POSITIONAL ACCURACY

O r b i X

The perfect pad shape – nature's paradigm

With OrbiX, a new generation of printing pads for pad printers is available on the market. In addition to the silicone composition from which a pad is poured, the shape is the deciding criterion for optimal printing results. In this case, the laws of nature help to calculate the ideal pad shape. The surface geometry of the OrbiX-pads is derived from forms, similar to that of a parabola, which are often found in nature. This unique combination of experience and inspiration from nature provides the basis of design for the perfect printing pad. The resulting shape has been applied to the surface structure of all the pads of the OrbiX series. The new pad surface design provides for even pad compression during the ink transfer, which results in the visible improvement of print quality.



The results include:



- even pad pressure
- optimizes the unroll properties
- marked improvement in the print transfer
- improved print accuracy

The OrbiX pad range includes the following pad types:



Longlife
54 Shore
44 Shore



Green
44 Shore



Blue
64 Shore



Red
54 Shore



StarX
64 Shore
54 Shore
44 Shore
39 Shore

OrbiX – Formes

| | | |
|------------------------------------|------------------------------------|--|
| | | |
| <p>No. T8001 Applications:</p> | <p>No. T8002 Applications:</p> | <p>No. T8003 Applications:</p> |
| | | |
| <p>No. T8004 Applications:</p> | <p>No. T8005 Applications:</p> | <p>No. T8006 Applications:</p> |
| | | |
| <p>No. T8007 Applications:</p> | <p>No. T8008 Applications:</p> | <p>No. T8009 Applications:</p> |
| | | |
| <p>No. T8010 Applications:</p> | <p>No. T8011 Applications:</p> | <p>No. T8012 Applications:</p> |
| | | <p>All pads shown are available with an aluminum shaft as well. (Article number = T90XX insert the last two numbers of the pad shown) In addition to these shapes, others pad shapes are being designed.</p> |
| <p>No. T8013 Applications:</p> | <p>No. T8014 Applications:</p> | |

