



[info@independentimaging.org](mailto:info@independentimaging.org)

800-543-4424

## Illuminated "In Use" Door Signs

- Lighted sign focuses attention on exam room status.
- Enhances Radiation Safety by suggesting the risk of accidental entry into an active exam room.
- NOT a plug-in sign; *must be hardwired* @ 120VAC.
- Each sign measures 11 1/2" x 2 1/2" x 7 1/4" h.
- Shipping weight of each sign: 4 lbs.

cat.#	description	price
SLU-XR	X-RAY IN USE	\$169.00
SLU-CT	CT IN USE	\$169.00
SLU-MR	MRI IN USE	\$169.00

### Custom Signs

- Create your own illuminated sign for your specific needs.
- Artwork must fit 11 1/2" wide x 7 1/4" high.
- Shipping weight of each sign: 4 lbs.

cat.#	description	price
SLU-CX	Customer's Words	\$229.00



## Safe-Spot Safelight

- Adjustable swivel & pivot base.
- Safe for high speed film.
- Filter is GBX-2 compatible
- Pull chain switch.
- 15-watt incandescent lamp.
- Shipping weight: 3 lbs.



safe-spot  
#SSP-15 \$179.00

Replacement Filter (Dual Round)  
#SFR-45 \$88.00/ea.  
(Interior bulb can be replaced with 15-watt incandescent bulb.)



## Fluoro-Safelight

- Ceiling or wall mount.
- 15-watt, 18" fluorescent lamp.
- Blue/Green film type filter will not dry or crack with age; GBX-2 compatible.
- Pull chain switch and 6 foot power cord.
- Shipping weight: 8 lbs.

fluorescent safelight  
#SLS-15 \$225.00

Replacement Filter (Fluorescent)  
#SFT-40 \$117.00/ea.  
(White bulb can be replaced with any 15-watt cool white or warm white fluorescent tube.)



## Film Duplicator (copier)

- Compact design uses less counter space; single UV lamp.
- FLAT GLASS contact surface - extremely easy to use.
- Non-rigid, floppy lid contours to film for excellent contact.
- Electronic timer with automatic reset.
- All metal housing.
- 18" w x 15" d x 12" h
- 110 VAC standard
- 1 year warranty (excl. glass & bulbs)
- Shipping weight: 31 lbs.

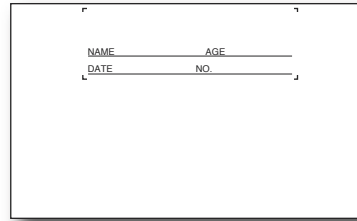
EASY! Place the original film and the copy film on the glass. Then, press "expose" and run through any standard processor.

#195D  
\$725.00

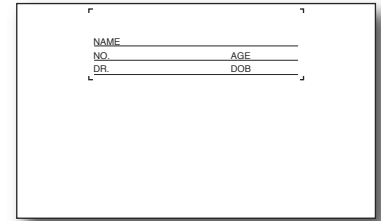


### I.D. Cards - Standard

- Standard Cards measure 3" x 5".
- Each card is imprinted with standard legend.
- Each pack contains 1,000 cards.
- Shipped from stock.



#IDS-02M \$46.00/pk  
Blank with 2-Line Legend

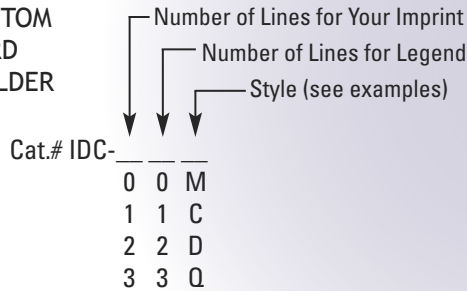


#IDS-03M \$46.00/pk  
Blank with 3-Line Legend

### I.D. Cards - Custom

- Custom Cards measure 3" x 5" with 1" x 3" imprint window (GE and Kodak compatible cards are 3<sup>1</sup>/<sub>4</sub>" x 7<sup>3</sup>/<sub>16</sub>" with 1" x 2<sup>1</sup>/<sub>2</sub>" imprint window).
- Each card is imprinted with:
  - Your Custom Imprint (0, 1, 2 or 3 lines);
  - Custom Legend (0, 1, 2 or 3 lines); (if not specified, standard legend will be used).
- Each pack contains 1,000 cards.

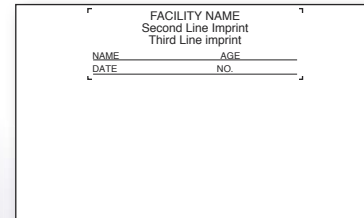
CUSTOM CARD BUILDER



Artwork may not be an exact match to that of other suppliers.

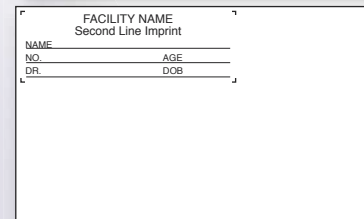
Custom Cards are non-returnable.

If not specified, standard legend will be used.

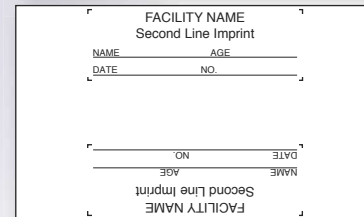


Example: #IDC-32M

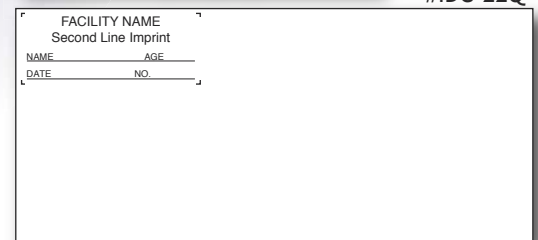
Most Popular Card!



Example: #IDC-23C



Example: #IDC-22D



Example: #IDC-22Q

style	imprint location	1000 cards	5000 cards*
M	Middle Top	\$55.00/M	\$49.00/M
C	Top Corner	\$55.00/M	\$49.00/M
D	Double Middle	\$63.00/M	\$57.00/M
Q	GE or Kodak (compatible)	\$65.00/M	\$59.00/M

(\*5000 quantity is priced per 1000 cards.)

(When ordering, a faxed diagram is most helpful.)



Pin Adapter can be set for use with middle or corner cards.

### I.D. Printer

#IDP-33  
\$315.00

- Fully automatic exposure for perfect image prints.
- Adjustable exposure timer for most film types.
- Film positioning guides for middle or corner ID cards.
- Durable, all-metal housing.
- Plug-in model only; 110/120 VAC.
- 8" w x 8" d x 3" h.
- Shipping weight: 6 lbs.



- Illuminators or "view boxes" are the ideal light source for the proper diagnosis and interpretation of x-ray radiographs.
- Can be mounted virtually anywhere.
- Two styles: Standard and Techno•Vision.
- Provides the right conditions for efficient film reading.
- Three sizes cover most viewing needs.



**single bank**  
#VBS-10 \$220.00  
14" w x 3 1/2" d x 21 3/4" h  
Shipping weight: 17 lbs.



**double bank**  
#VBD-20 \$420.00  
28" w x 3 1/2" d x 21 3/4" h  
Shipping weight: 34 lbs.



## Standard Illuminators (viewboxes)

- High quality, cost effective illuminators.
- Available in three models: 1, 2, and 4-bank.
- Upper and Lower Film Grips.
- Internal reflectors offer consistent illumination.
- Includes two 15-watt fluorescent lamps per viewing area.
- Use as stand alone or wall mounted.
- 6 foot power cord.
- UL listed.

**single bank**  
With Film Activated Switch  
#VVS-11 \$395.00  
21" w x 1 9/16" d x 20 1/4" h  
Shipping weight: 10 lbs.



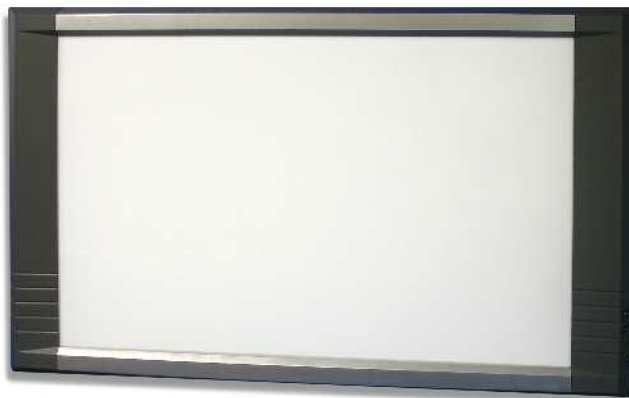
Single Units accept VESA monitor mounts! (mounts not included)

## Techno•Vision Illuminators (view surfaces)

Make the switch to high-tech lighting!

What's unique about Techno•Vision:

**double bank**  
With Film Activated Switch  
#VVD-21 \$725.00  
35" w x 1 9/16" d x 20 1/4" h  
Shipping weight: 16 lbs.



- Ultra-Slim design (only 1 9/16" thick!) gives a flush mounted look without the need for wall cut-outs.
- Over 90% light uniformity from edge to edge.
- Extra LONG LAMP LIFE at 50,000 hours!
- Single Bank units come with threaded holes to accept a standard 100mm VESA monitor mount (mount not included).
- Upper and Lower Film Grips.
- Film-Activated Switch available.
- EEFL lighting technology assures years of trouble-free service.
- Average light intensity is 5000 nits.
- 6 foot power cord.
- UL listed.

## Mammography Illuminator

- Light source specifically designed to meet ACR Mammography Viewing requirements.
- Unit offers two (2) side-by-side film viewing areas for 24 x 30 film.
- Light intensity: 4,200 nits.
- Upper and Lower Film Grips.
- White powder coat finish.
- Includes four (4) 15-watt fluorescent lamps.
- UL listed with 5-foot power cord.
- Overall size: 20<sup>1</sup>/<sub>2</sub>"w x 3<sup>1</sup>/<sub>2</sub>"d x 16<sup>3</sup>/<sub>4</sub>"h.
- Shipping weight: 17 lbs.



#VBM-24  
\$530.00



## Spinal Illuminator

- Light source designed for Orthopedic and Chiropractic film viewing.
- Unique viewing area for 14" x 36" film.
- Includes two 30-watt fluorescent lamps.
- Upper, Lower, and Mid-Height Film Grips.
- Stand alone or use the keyhole slots for wall mounting.
- White powder coat finish.
- UL listed.
- Overall size: 15"w x 3<sup>1</sup>/<sub>2</sub>"d x 39"h.
- Shipping weight: 25 lbs.



#VBO-36  
\$480.00



## View-Spot

- Aids in Dx by high-lighting specific areas of the film.
- Convenient desk stand.
- 75-watt incandescent bulb.
- 22,000 nits, light intensity.
- Remote, foot actuated switch.
- 6 foot power cord and UL listed.
- Shipping weight: 10 lbs.



#VSP-75  
\$290.00

