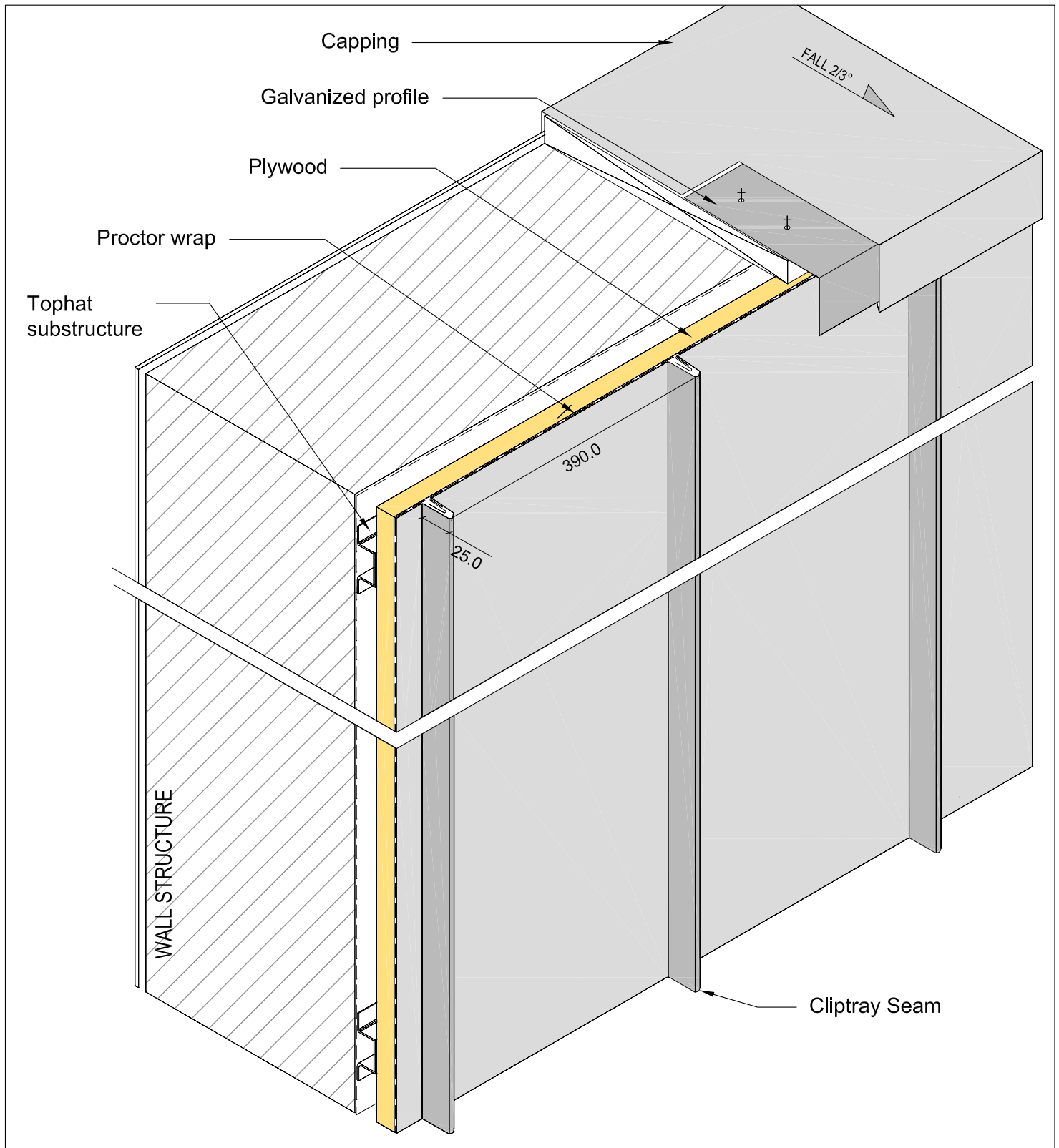


DESIGN DETAILS - FACADE

ARCHCLAD™ CLIPTRAY PANELS

FACADE AND CAPPING AXONOMETRY

PAGE 01



NOTE: The above are generic details and may not be applicable to your project. We suggest consultation with the Installer on site.



1-3 Commercial Rd. Notting Hill VIC 3168

T: 03 9561 0896

info@archclad.com.au

www.archclad.com.au

F: 03 9560 6903

ABN:13141735686

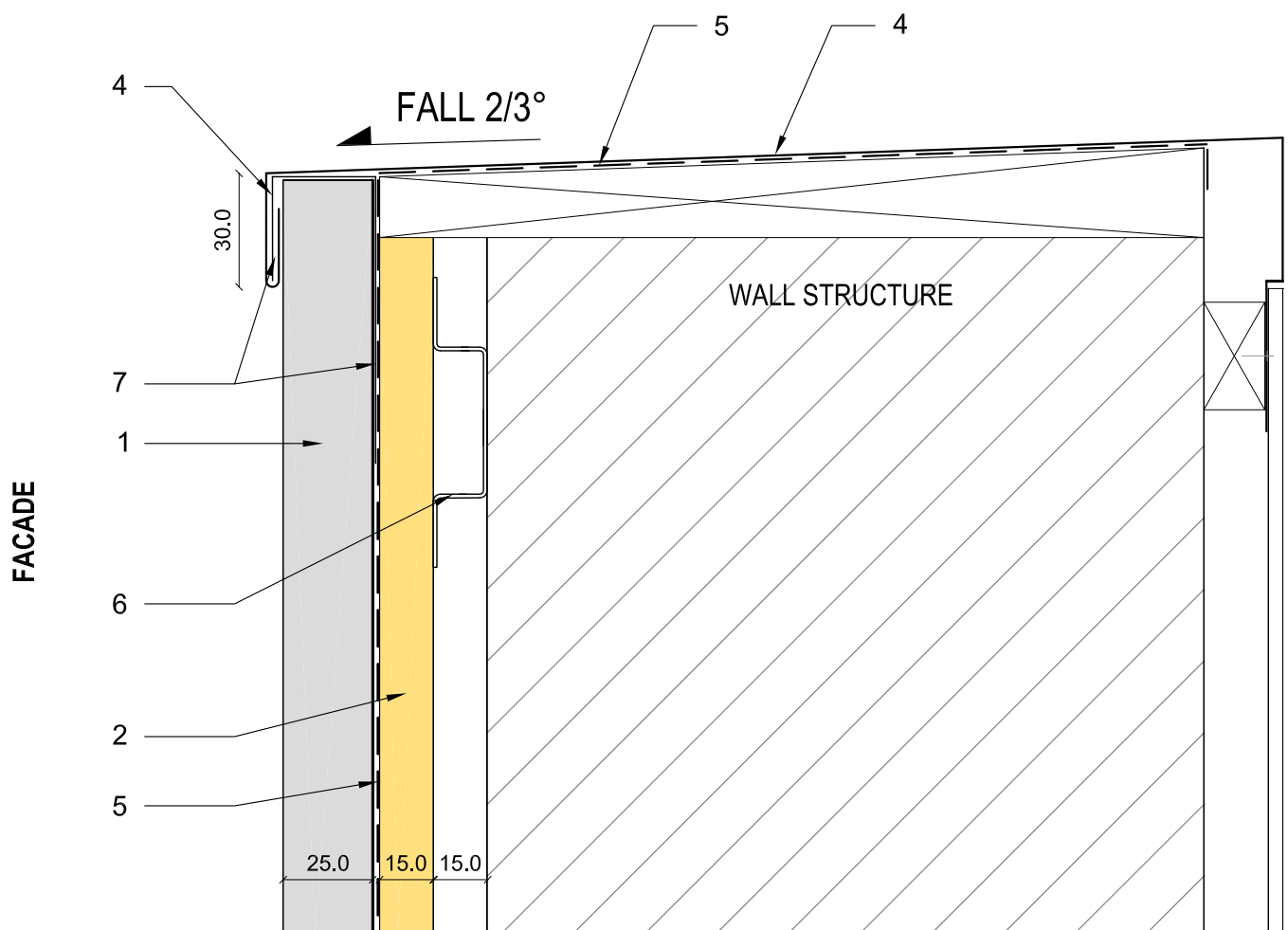
1300 CLADDING

DESIGN DETAILS - FACADE

ARCHCLAD™ CLIPTRAY PANELS

CAPPING DETAIL

PAGE 02



LEGEND:

1. ARCHCLAD™ Cliptray Seam
2. 15mm Plywood CD grade
4. Capping

5. Proctor waterproof, breathable membrane
6. Top hat substructure (see also Composite Foam Panels)
7. Galvanized profile

Material Available in Cliptray Panels: Aluminium, Titanium Zinc & Copper.

SCALE 1:2

NOTE: The above are generic details and may not be applicable to your project. We suggest consultation with the Installer on site.



1-3 Commercial Rd. Noting Hill VIC 3168

T: 03 9561 0896

info@archclad.com.au

www.archclad.com.au

F: 03 956 06903

ABN:13141735686

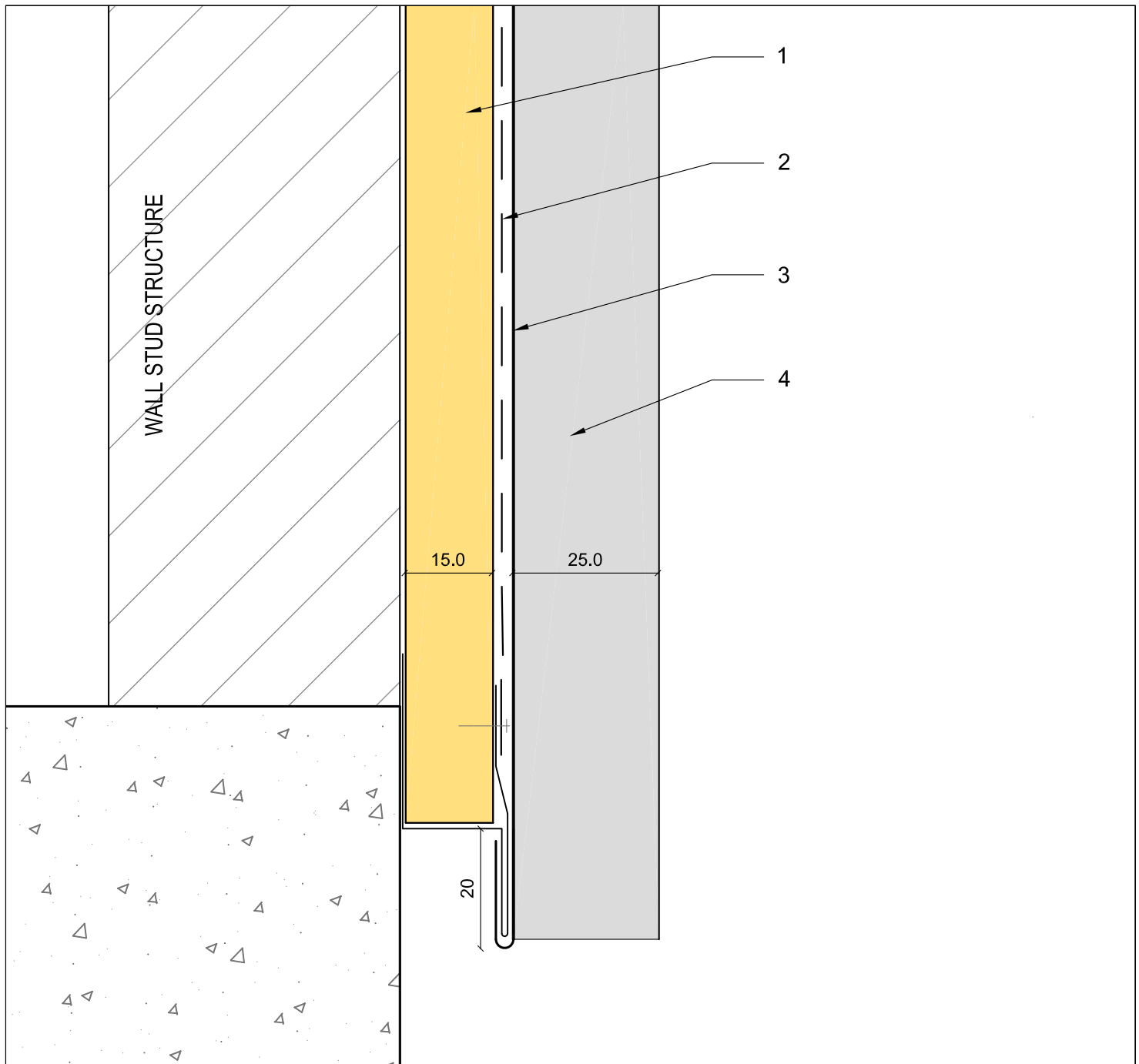
1300 CLADDING

DESIGN DETAILS - FACADE

ARCHCLAD™ CLIPTRAY PANELS

FOOTMOULD DETAIL

PAGE 03



- LEGEND:**
- 1. 15 mm Plywood CD grade
 - 2. Proctor waterproof, breathable membrane
 - 3. ARCHCLAD™ CLIPTRAY Panel
 - 4. ARCHCLAD™ Cliptray Seam

Material Available In Cliptray Panels: Aluminium, Titanium Zinc & Copper.

SCALE 1:1

NOTE: The above are generic details and may not be applicable to your project. We suggest consultation with the Installer on site.



1-3 Commercial Rd. Notting Hill VIC 3168

T: 03 95610896

info@archclad.com.au

www.archclad.com.au

F: 03 95606903

ABN:13141735686

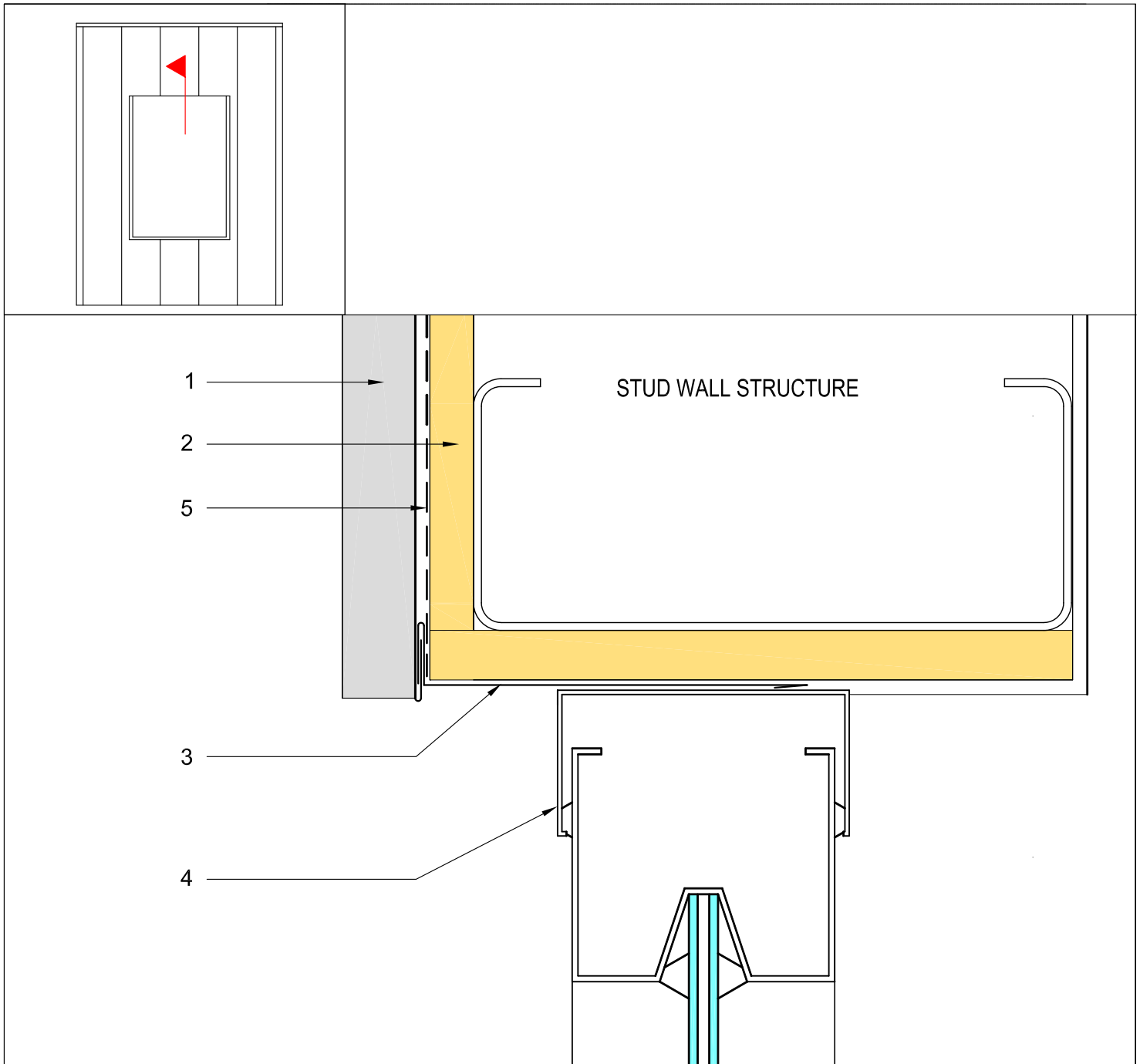
1300 CLADDING

DESIGN DETAILS - FACADE

ARCHCLAD™ CLIPTRAY PANELS

WINDOW HEAD

PAGE 04



LEGEND:

SCALE 1:2

- 1. ARCHCLAD™ Cliptray Seam
- 2. 15mm Plywood CD grade
- 3. Window Head Flashing

- 4. Window frame
- 5. Proctor waterproof, breathable membrane
Material Available in Cliptray Panels: Aluminium, Titanium Zinc & Copper.

NOTE: The above are generic details and may not be applicable to your project. We suggest consultation with the Installer on site.



1-3 Commercial Rd. Notting Hill VIC 3168

T: 03 9561 0896

F: 03 956 06903

info@archclad.com.au

ABN:13141735686

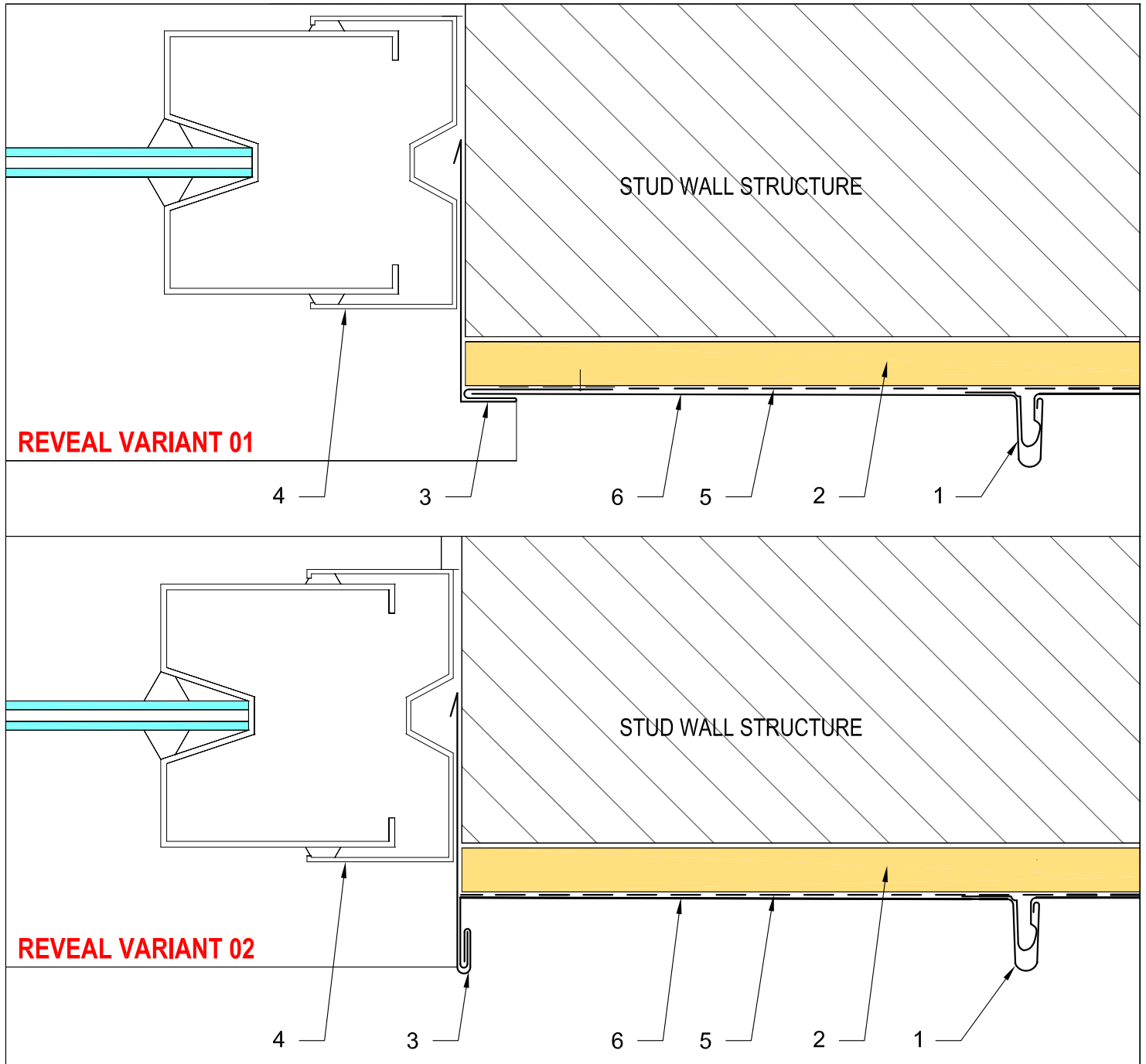
www.archclad.com.au

1300 CLADDING

DESIGN DETAILS - FACADE

ARCHCLAD™ CLIPTRAY PANELS

WINDOW REVEAL VARIANT 1&2



LEGEND:

SCALE 1:2

- | | |
|---------------------------|--|
| 1. Cliptray Seam | 4. Window frame |
| 2. 15mm Plywood CD grade | 5. Proctor waterproof, breathable membrane |
| 3. Window Reveal Flashing | 6. ARCHCLAD™ Cliptray Panel |

Material Available in Cliptray Panels: Aluminium, Titanium Zinc & Copper.

NOTE: The above are generic details and may not be applicable to your project. We suggest consultation with the Installer on site.



1-3 Commercial Rd. Notting Hill VIC 3168

T: 03 9561 0896

F: 03 956 06903

info@archclad.com.au

ABN:13141735686

www.archclad.com.au

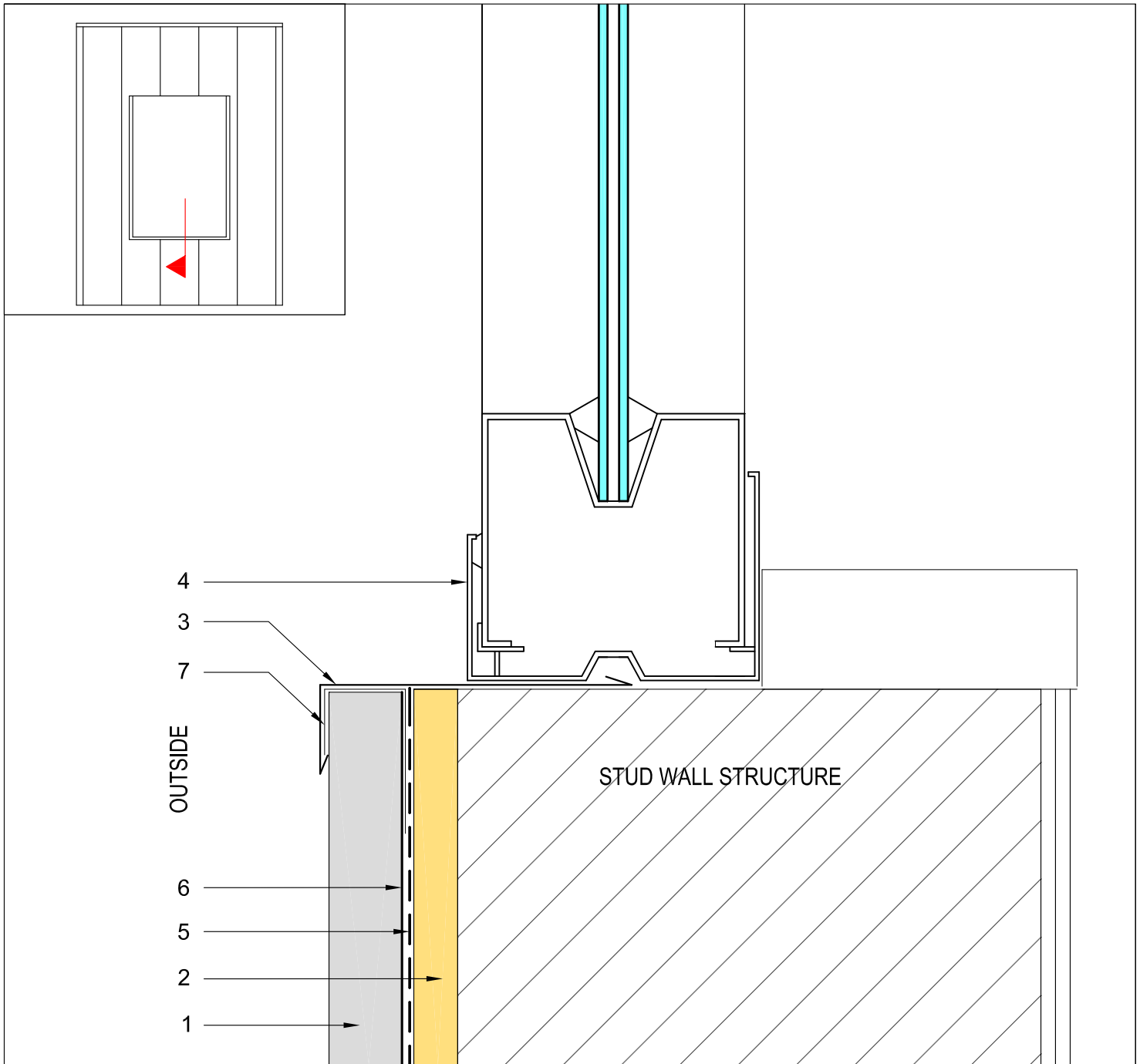
1300 CLADDING

DESIGN DETAILS - FACADE

ARCHCLAD™ CLIPTRAY PANELS

WINDOW SILL SECTION

PAGE 06



LEGEND:

SCALE 1:2

- 1. Cliptray Seam
- 2. 15mm Plywood CD grade
- 3. Window Sill Flashing
- 4. Window frame
- 5. Proctor waterproof, breathable membrane
- 6. ARCHCLAD™ Cliptray Panel
- 7. Galvanized profile

Material Available in Cliptray Panels: Aluminium, Titanium Zinc & Copper.

NOTE: The above are generic details and may not be applicable to your project. We suggest consultation with the Installer on site.



1-3 Commercial Rd. Notting Hill VIC 3168

T: 03 9561 0896

F: 03 956 06903

info@archclad.com.au

ABN:13141735686

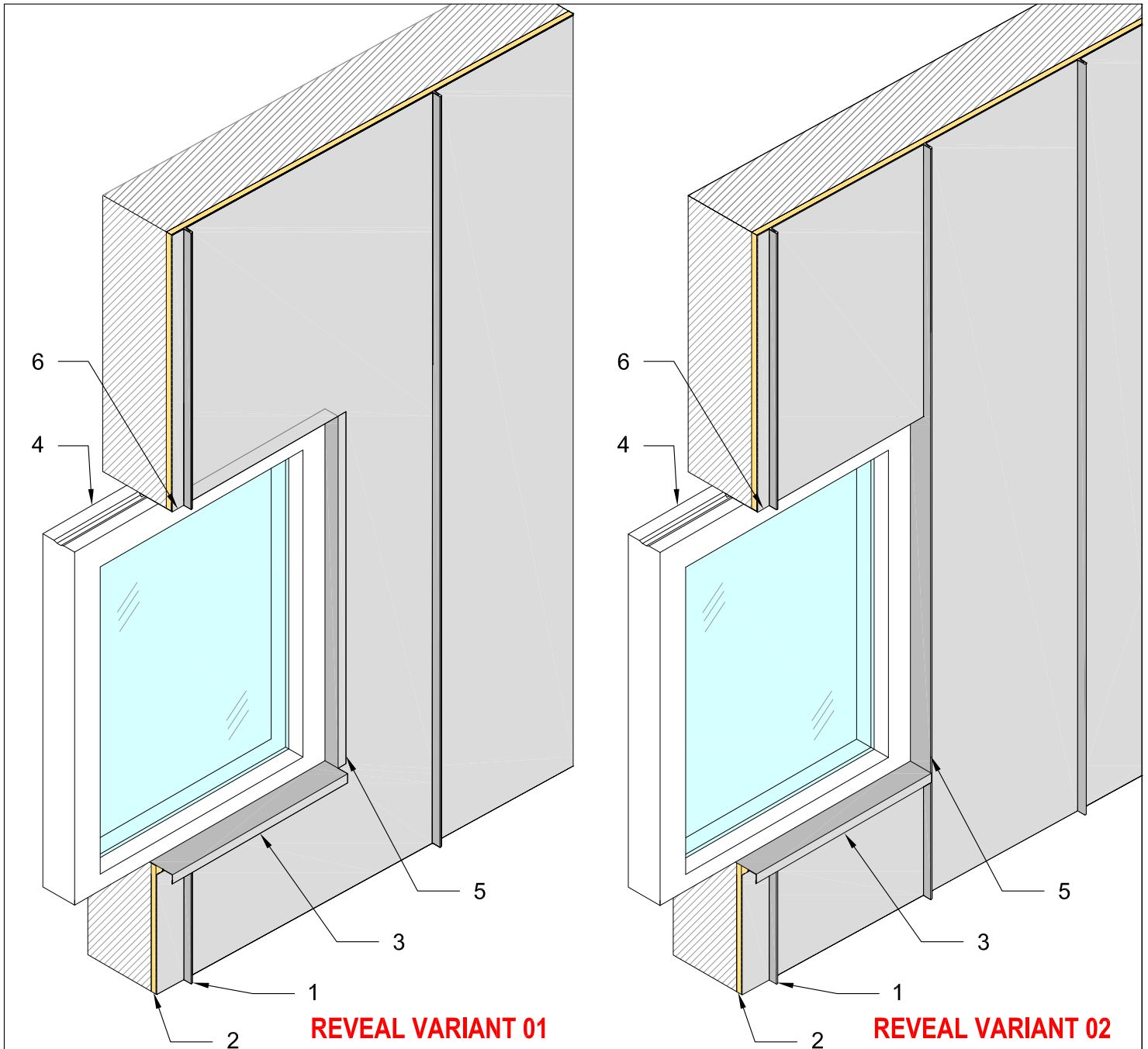
www.archclad.com.au

1300 CLADDING

DESIGN DETAILS - FACADE ARCHCLAD™ CLIPTRAY PANELS

WINDOW SIDE FLASHINGS

PAGE 07



LEGEND:

SCALE 1:2

- 1. Cliptray Seam
- 2. 15mm Plywood CD grade
- 3. Window Sill Flashing
- 4. Window frame
- 5. Window Side Flashing
- 6. Window Top Flashing

Material Available in Cliptray Panels: Aluminium, Titanium Zinc & Copper.

NOTE: The above are generic details and may not be applicable to your project. We suggest consultation with the Installer on site.



1-3 Commercial Rd. Notting Hill VIC 3168

T: 03 9561 0896

F: 03 956 06903

info@archclad.com.au

ABN:13141735686

www.archclad.com.au

1300 CLADDING