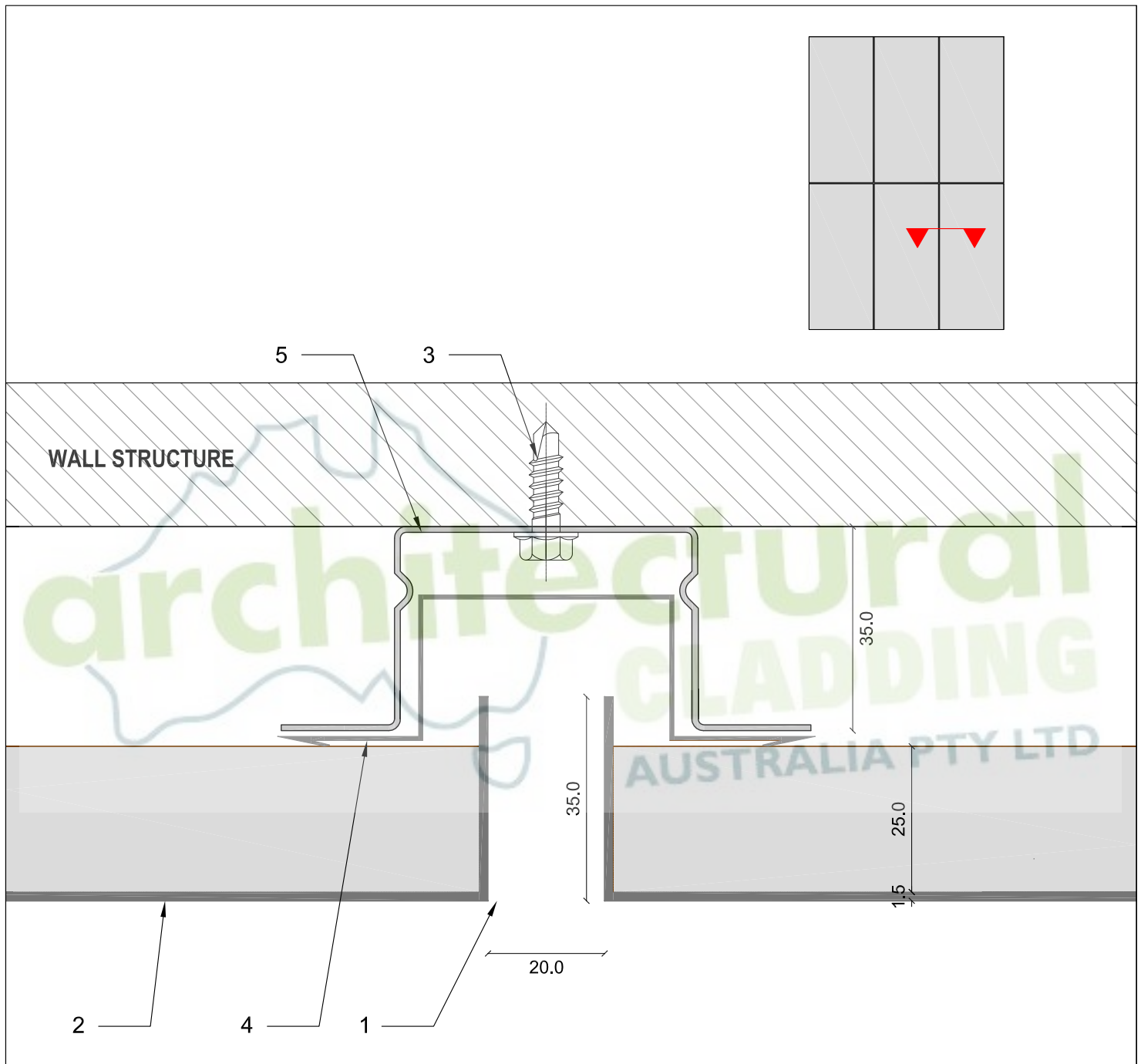


DESIGN DETAILS - FACADE

ARCHCLAD™ CASSETTE PANELS

HORIZONTAL SECTION

PAGE 01A



LEGEND:

- 1. Vertical joints
- 2. Corten A Cassette Panels
- 3. Fixing
- 4. Corten A Flashing
- 5. Tophat

SCALE 1:1

Material Available in Express Panels: Aluminium, Corten, Titanium Zinc & Copper.

NOTE: The above are generic details and may not be applicable to your project. We suggest consultation with the Installer on site.



1-3 Commercial Road, Notting Hill VIC 3168

T: 03 9561 0896

info@archclad.com.au

www.archclad.com.au

F: 03 9560 6903

ABN:13141735686

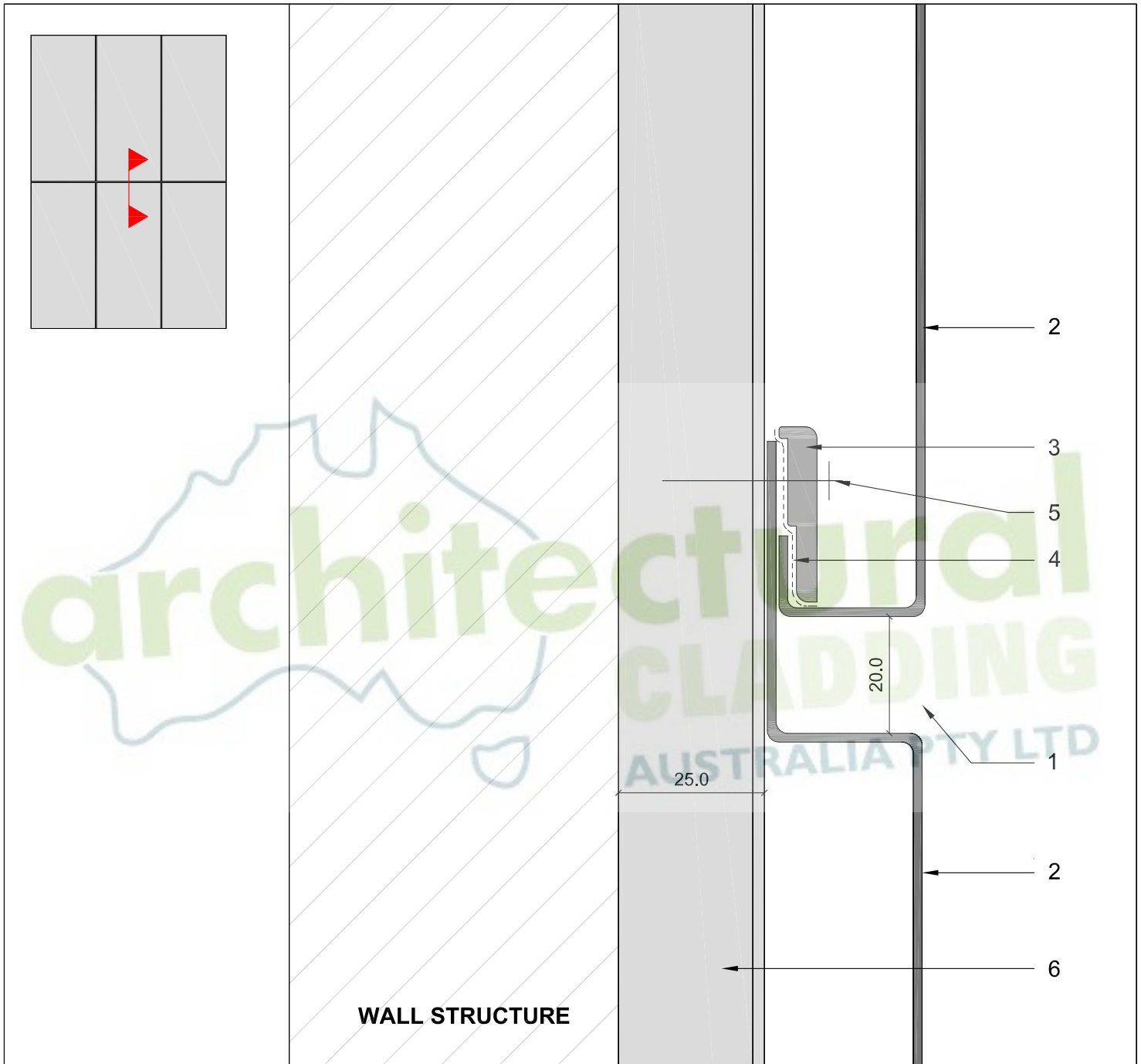
1300 CLADDING

DESIGN DETAILS - FACADE

ARCHCLAD™ CASSETTE PANELS

VERTICAL SECTION

PAGE 02A



LEGEND:

- 1. Horizontal joints
- 2. Corten A Cassette Panels
- 3. Fixing clip
- 4. Double sided tape
- 5. Fixing
- 6. Tophat (vertical)

SCALE 1:1

Material Available in Cassette Panels: Aluminium, Corten, Titanium Zinc & Copper.

NOTE: The above are generic details and may not be applicable to your project. We suggest consultation with the Installer on site.



1-3 Commercial Road, Notting Hill VIC 3168

T: 03 9561 0896

F: 03 9560 6903

info@archclad.com.au

ABN:13141735686

www.archclad.com.au

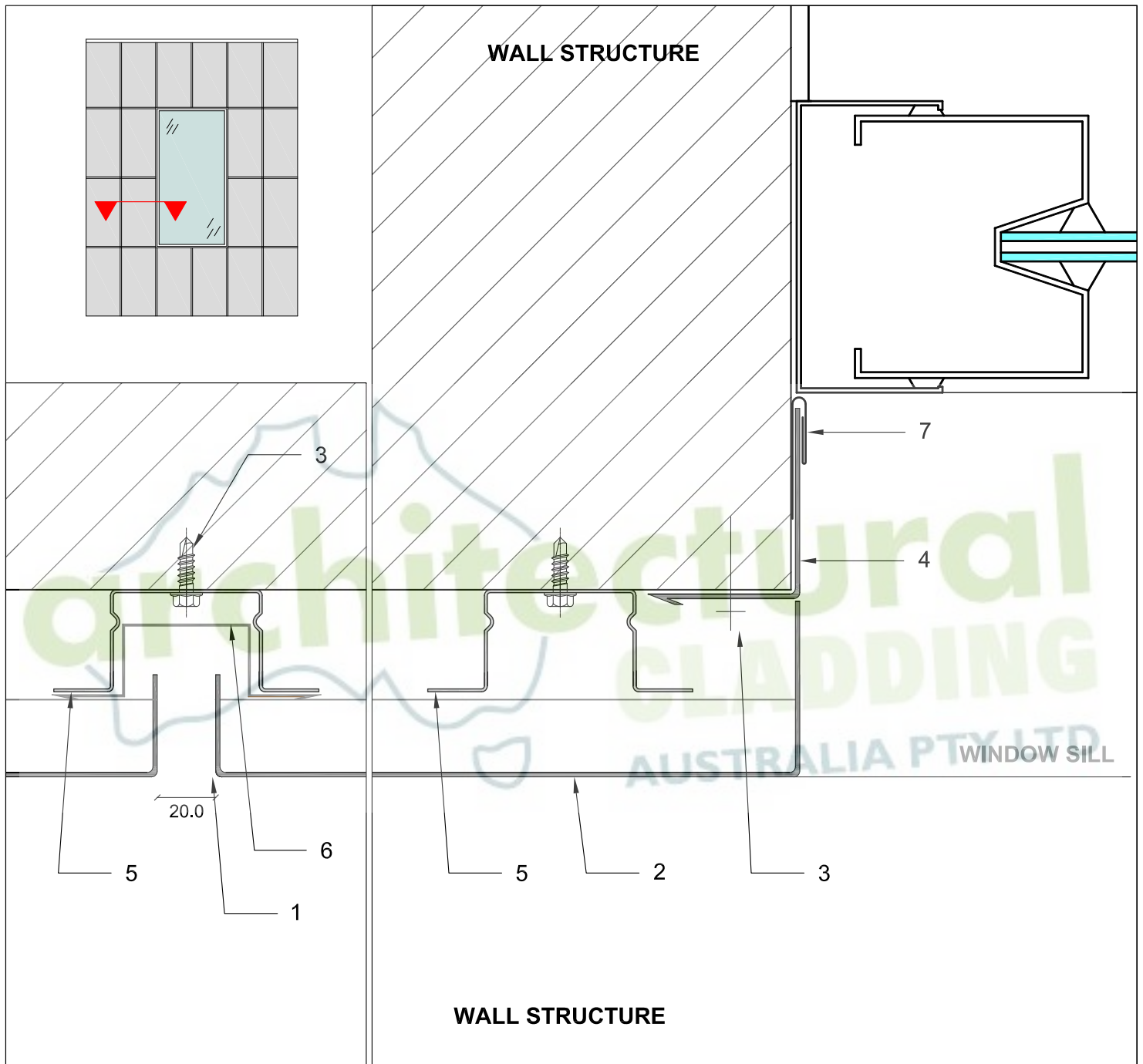
1300 CLADDING

DESIGN DETAILS - FACADE

ARCHCLAD™ CASSETTE PANELS

WINDOW HORIZONTAL SECTION

PAGE 03A



LEGEND:

- 1. Vertical joints
- 2. Corten A Cassette Panels
- 3. Fixing

- 4. Corten A Flashing
- 5. Tophat
- 6. Corten A vertical Channel
- 7. Corten A Push-in Flashing

SCALE 1:2

Material Available in Cassette Panels: Aluminium, Corten, Titanium Zinc & Copper.

NOTE: The above are generic details and may not be applicable to your project. We suggest consultation with the Installer on site.



1-3 Commercial Road, Notting Hill VIC 3168

T: 03 9561 0896

F: 03 9560 6903

info@archclad.com.au

ABN:13141735686

www.archclad.com.au

1300 CLADDING