

Hapeville Charter Middle School 6th Grade Newsletter November 14th, 2017 - November 28th, 2017



Mrs. Croshaw – Reading (mrcroshaw@hapevillecharter.org)

All class periods are continuing to read *Number the Stars*. We will be doing the reading in class because I do not have enough copies of the novel for each student to borrow; however, I have placed a link on Google Classroom where the book can be found in PDF format. If you would like, you may purchase your own copy for your child to have at home. If you do, please do **not** read ahead as I will be asking the students to make predictions regularly. We will continue to work on theme, plot structure, character traits and changes, making inferences, citing evidence, using context clues to determine word meaning or understanding what is going on in the text and using critical thinking skills to answer implicit questions. This type of question is tough for the students as they are not used to having to combine using background knowledge and prior experiences along with textual evidence in order to obtain an answer. This novel will have a quiz after every four chapters as well as a test at the end and vocabulary quizzes. I will also be asking your students to create a word search using new vocabulary for homework by the end of the week. The students will need to ensure that they are keeping up with the reading as well as the work we do in class with the novel. If your child is absent on a class day, s/he can stay in tutoring to catch up on the reading or borrow a book from me during lunch. The books will not be going home. I have also uploaded a link in Google Classrooms where a student found the book online, for free. Our second quiz on chapters 5 - 8 and the vocabulary will be this week.

Tuesday and Wednesday, Nov. 14/15: If your child has 65 or below in Reading, s/he will receive information on completing recovery work from Friday, Nov. 17 (after school) through Monday Nov. 27 (ends at 3:00 pm). This work will not be accepted late. Also, per the syllabus, the late work policy is: 1 school day - 90% maximum, 2 school days - 80% maximum, 3 school days - 70% maximum. No late work is accepted after the third school day. Reading logs are due: November 30/December 1 (three weeks' worth, 360 minutes) and December 14/15. Use loose-leaf paper for the logs. Three columns with date, title, and minutes for each session read and then a final parent signature at the bottom or along the side. Students are to read 20/night for a total of 280 minutes on each log. Every five minutes over the minimum equals one extra credit point.

Tutoring has begun from 3:15 - 3:45. Your child needs to tell me what s/he needs help with. This is **not** a time for making up missing work. Reminder: Now that the weather has begun to change, please remember that hoodies and sweaters must either be the school ones or navy blue with no emblems or other colors.

Ms Gibson – Math (dgibson@hapevillecharter.org)

The standards that will be covered in Ms. Gibson's class the next two weeks will be MGSE6.EE.1a, MGSE6.EE.2, MGSE6.EE.2a. Write, read, and evaluate expressions MGSE6.EE.2c Substitution of a variable for a number MGSE6.EE.3 Distributive Property, [MGSE6.EE.4](#) Equivalent Expressions, and MGSE6.NS.4 Greatest Common Factor and Least Common Multiple

We will review Unit 3 standards the entire first week. On December 5th and 6th will be the Unit 3 assessment. We will begin Unit 4 MGSE6.EE.5 substitutions and one step equations The student's interactive notebook, homework, and worksheets will be the best study guide. Additional resources are: Combine like terms https://www.youtube.com/watch?v=3NHSwiv_pSE

Distributive Property <http://www.algebra-class.com/distributive-property-equations.html> Interactive notebook, Google classroom

A study guide will be posted in google classroom to prepare for the Unit 3 Assessment. The students will have homework, study for quiz, and any makeup assignments for homework. Late assignments will now only be accepted within 3 days of original due date. Homework isn't given every night but it's given at least 3 nights a week.

Parents please work with your Middle School students to help them become more and more responsible for keeping up with homework, studying, and behaving correctly in class. In an effort to communicate effectively with all my parents I will send home tests for parent signature and correction of incorrect answers for extra credit of 30 points for the student. Please make sure your student takes advantage of this opportunity.

Senorita Vivanco – Spanish (svivanco@hapevillecharter.org)

Over this next week we will continue covering Physical Descriptions and Personality traits to describe people using Verb to BE (SER), and when we come back from holidays we will start talking about the other meaning of the verb to Be (ESTAR) in Spanish in order to express feeling and weather conditions.

Standards:

- MLI.INTID Demonstrate Novice-Mid proficiency in listening, viewing and reading comprehension.
- MLI.PIC Demonstrate Novice-Mid proficiency in oral and written exchanges with respect to proper pronunciation, intonation and writing mechanics.
- MLI.CCCB Apply previously learned skills from other subjects (ELA)
- MLI.IPIG Ask questions and provide responses based on topics such as self, family, people, etc.

Our goals for these two weeks is: Speak more Spanish using new vocabulary during class and learn how to work in groups. We will use: PAIR SHARE (two students will have to share their ideas about the topic. Each person speaks, listens and gives feedback) and RANDOM GROUPS

This Week's Highlights:

Monday

We will be talking about subject pronouns and verb to be: SER in order to keep learning how to describe somebody else. Students will be working on their warm up. After that I will explain the rules about the verb to BE: SER in Spanish. We will be practicing together some examples. As classwork: worksheet and Tic Tac Toe and textbook Que Chevere. Homework: bring to a class two images from a magazine or online resource of famous people from a Spanish speaking country due on Tuesday 14 (A DAY) and Wednesday 15

Tuesday/Wednesday

The students will be describing some pictures as a warm up. After that I will explain the group or shoulder partner activity. The teacher will explain the partner activity or small groups activity. Using images from a famous person from a Spanish Speaking country students will have to describe them After the biographies are completed, each member introduces his or her famous person to the class. Homework: Study for the quiz. I will post on Google classroom a study guide. The students using their handouts can resolve the study guide and be ready for their quiz due next class. Thursday, 16 (A Day) and Friday, 17 (B Day)

Thursday/Friday

The students will have some time to review their study guide and handouts. We will take the test. After that the students will be working in groups reading an article about the Hispanic Culture. We will use the Sticky Notes Reading strategy.

Monday (27th) /Tuesday (28th)

We will start a new class talking about new vocabulary feeling and emotions. The students will be answering questions about this vocabulary. I will be modeling the vocabulary. We will practice together pronunciation. Pair Share activity: Everybody will mention 3 adjectives to express how they are feeling. After that as classwork the students will complete a worksheet about feelings and emotions. Homework: Homework: students will have to complete 3 activities on QUIZLET (flashcards, spell and test) about Feeling and Emotions in Spanish due on Wednesday, 29 (A DAY) and Thursday, 30 (B DAY).

Wednesday/Thursday

We will be talking about subject pronouns and verb to be: ESTAR in order to learn how to express how someone else is feeling. Students will be working on their warm up. After that I will explain the rules about the verb to BE: ESTAR in Spanish. We will be practicing together some examples. As classwork: worksheet and textbook Que Chevere. Homework: google classroom worksheet form due on Friday 01 (A DAY) and Monday 04 (B DAY).

Friday/Monday

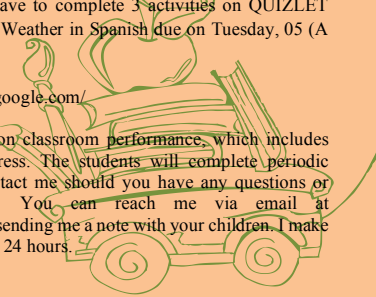
We will be talking about Weather and Seasons using the Verb to Be ESTAR. Students will be working on their warm up. After that I will be modeling the new vocabulary and explaining how to express weather conditions in Spanish. We will be practicing together pronunciation and expressing what is the weather like in different places around the world. As classwork: worksheet and textbook Que Chevere. Homework: students will have to complete 3 activities on QUIZLET (flashcards, spell and test) about The Weather in Spanish due on Tuesday, 05 (A DAY) and Wednesday, 06 (B DAY).

Useful links:

Google classroom: <https://classroom.google.com/>

Quizlet: <https://quizlet.com>

Remember grading is mostly based on classroom performance, which includes class participation, effort, and progress. The students will complete periodic assessments. I encourage you to contact me should you have any questions or concerns, or just to say hello! You can reach me via email at svivanco@hapevillecharter.org or by sending me a note with your children. I make every effort to return messages within 24 hours.



Ms Odell – ESOL

For my 6th and 7th grade ESOL students, I am now teaching a mix of Reading and ELA, along with WIDA standards in order to help my students be able to integrate themselves into the mainstream Reading and/or ELA classroom with success. Currently, the books we are reading are "Diary of a 6th grade ninja," "Number the Stars," and "The Boy in the Striped Pajamas." Seventh graders have just turned in their first project. Sixth graders turned in an Acrostic poem about Thanksgiving, and they will be given an exam later in the week with everything we have covered so far.

The Standards being covered this week are:

Analyzing how particular elements of a story or drama interact, as well as meaning and/or structure (and also being able to identify a poem)
Writing arguments to support claims with clear reasons and relevant evidence.

Demonstrating command of the conventions of standard English capitalization, punctuation, and spelling when writing.

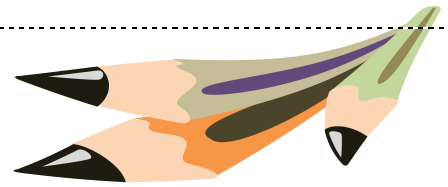
1. Use a comma to separate coordinate adjectives (e.g., It was a fascinating, enjoyable movie but not He wore an old [,] green shirt).
2. Spell correctly.

Reading:

Determining the meaning of words and phrases as they are used in a text, including figurative and connotative meanings.

Tracing and evaluating the argument and specific claims in a text.

Analyzing the interactions between individuals, events, and ideas in a text. This week, I will be ensuring students have an understanding of what we have gone over, and I will also make sure all students are properly assessed and understand their grades before Thanksgiving break. Students are continued to be encouraged to use the Myon reading program, as well as Duolingo, at home in order to improve comprehension skills.



Ms White – Social Studies (bwhite@hapevillecharter.org)

Hello Hornets!

Thank you parents for your patients while I was out. The students will receive detailed grade reports this Friday to be sent home so that they can see what their grades are going into thanksgiving break. I will also provide a make-up assignment via study island that will be due Sunday November 26, 2017. The number of assignments completed will replace any zeros they may have. Students will finish WWI and have a quiz this week. We will also start WWII in preparation for government and economics once we return from Thanksgiving break. If you have any questions, feel free to email me.

Ms. Corbin - Science (fcorbin@hapevillecharter.org)

We have officially started a new unit: The Water Cycle. The topics we are covering the next couple weeks are:

- Location of Water
- Composition and Location of the Oceans
- Temperature, Salinity, and Density

Additionally, any student who has below a 70% will receive a recovery packet this week, due on Monday, November 27th when we return from Thanksgiving break. No late work for this will be accepted.

Additional Resources: www.studyisland.com and www.ixl.com

Ms Merrell – ELA (mmerrell@hapevillecharter.org)

Over the next couple of weeks, 6th Grade ELA students will continue working towards mastery of the following objectives:

- Answer Constructed Response Questions using the R.A.C.E. Strategy
- Identify the Eight Parts of Speech (Noun, Pronoun, Adjective, Verb, Adverb, Preposition, Conjunction and Interjection)

By the end of the week (November 13th), students will be assessed on the R.A.C.E. Strategy.

All Students will be given a Parts of Speech Project this week. This project is due on December 7th (A-day students) and December 8th (B-day students). Students will be assessed on the eight parts of speech using the completed projects.

**B-day students received their ELA Grade Reports on Friday, November 10th. A-day students will receive ELA Grade Reports on Monday, November 13th. Please sign them and send them back to class as grade acknowledgment.

It is important that students complete all homework; this includes IXL.com Modules and studying their ELA Study Guides. Students will also have to write and explain each part of speech to their parents/guardians. Parents, please make sure you sign-off on this homework assignment for completion! Homework is always posted on the classroom board and available to be viewed on Google Classroom Online.

*****Some students are not bringing their ELA Study Guides or ELA Writing Journals to class, please remind them that they need them each class.***

If your student does not have an ELA folder (color-coded by class period: see Course Syllabus) they will need to bring it to class immediately.

Please feel free to e-mail me at mmerrell@hapevillecharter.org if you have any questions or concerns. Thanks in advance for your continued support.

Ms. Smith – 6th & 7th Grade Resource

(jsmith@hapevillecharter.org)

Your students have been doing a great job and progressing well in the past weeks! I encourage parents to continue the work with their student over the upcoming break and make sure their minds are not idle. I will be sending information to parents via email concerning upcoming data collection and progress as well as websites to use while home on break. In coming weeks' students will learn to determine the meaning of words and phrases as they are used in a text to include figurative language and literal meaning (ELAGSE6RI4). We will also be working on determining the sums, differences and, products and quotients decimals (MCC6.NS.2). Some key vocabulary terms include; simile, metaphor, personification, hyperbole, declarative, imperative, interrogative, exclamatory, estimate, decimal, thousandths and ten-thousandths.

Coach Andrews – PE

Students will be reviewing the study guide for volleyball test and we will continue to review safety issues.

Mr. Abercrombie – Study Skills

(cabercrombie@hapevillecharter.org)

This week we are reviewing over Order of Operations and Combining Like Terms.

We will have a quiz on Thursday and Friday.

And I'll be sending home a Thanksgiving packet for the students for to review.

