

SPRING
DIYs

WIN A
kitchen

MASSIMO CAPRA'S
favourite foods

DESIGN RULES
to break

CHOOSE THE
perfect lamp

CANADIAN HOME trends

CanadianHomeTrends.com

EXPERT TIPS!

FREE HOME
UPDATES

SUPER-EASY
makeovers
FOR EVERY BUDGET

17+
BACKYARD
IDEAS

money
Saving
secrets

DISPLAY UNTIL JULY 14, 2014

SPRING 2014 \$5.50



Plus 20% more
content in iPad version

Marc Stuydil

PM 41438018



- HIGH-QUALITY, CUSTOM DESIGN & BUILD
- EXPERT INTERIOR DESIGN & DECORATING
- PROFESSIONAL SPACE PLANNING & LAYOUT

QUICK QUOTE: Call 613.722.0839 today for your in-home consultation*

Luc Crawford Design Inc.
22 Antares Drive, Unit 101
613.722.0839 luc Crawford.com

NEW OFFICE LOCATION ▲

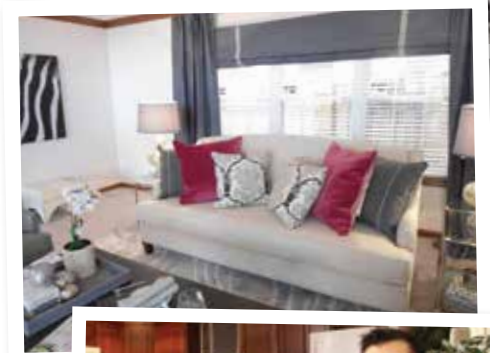
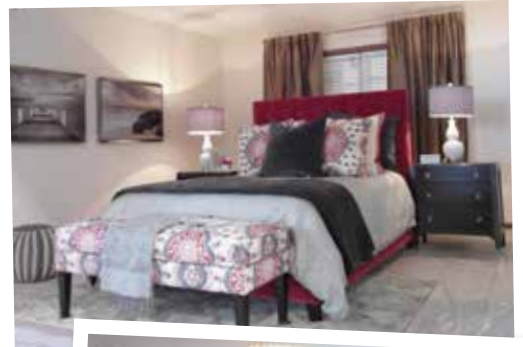


* In-home consultations may not be available outside the greater Ottawa area. Please call for eligibility and details.

special
thank you...

International Home Show

We would like to extend our gratitude to Bassett Furniture and Furnishings, Bouclair and ProSource for providing us with furniture, accessories and area rugs for the Canadian Home Trends Magazine Home at the International Home Show. We would also like to thank Evelyn Eshun and Lynn Spence for designing this beautiful home.



Custom Stainless Steel Countertops
by **ridalco**



DURABLE
and easy to
CLEAN

Our Contributors

continued...



Evelyn Eshun

Evelyn Eshun Interior Design
www.evelyneshun.com

My favourite place I've ever lived "is at a busy intersection in Toronto. I enjoyed being in the centre of a vibrant and friendly community with all the amenities close at hand."



Christina Marzilli

Decor-Rest Furniture
www.decor-rest.com

On my days off, I love to "get creative both indoors and outdoors – whether I'm planting trees, flowerbeds and organic vegetables on our family's farm, or renovating our grandparents' home in Boiano, Italy."



Michelle Cook

Indesign

A few things I can't live without are "my best friends, family, and canine. Every joy and emotion is heightened when spending time with them."

Paul Semkuley

re:source lifestyles
www.resourcelifestyles.com

While growing up, I wanted to be a "doctor, but later found my true calling as a designer."

In order to be irreplaceable one must always be different. - Coco Chanel



Eileen Marshall

Eileen Marshall Design
www.eileenmarshalldesign.com

Favourite room in my house is "my family room."

Luc Crawford

Luc Crawford Design Inc.
www.luccrawford.com

My design pet peeve is

"big, bright, white trim! This is the biggest one for me. You've GOT to have the right bones and architecture for it."



Follow us...

Did you know that you can also follow our design blogs on CanadianHomeTrends.com? Check out daily article updates from your favourite contributors.

SHED SOME LIGHT

Lamp shopping made easy with tips from design expert **EVELYN ESHUN**

Stand tall

To look proportionally correct, the height of the shade should be approximately two-thirds of the height of the lamp base.

Three's a party

Consider getting a lamp with a three-way bulb application. This will give you more flexibility to choose the amount of light you need for the task at hand.

In the shade

The shade should be at least one-inch larger than the base.

Line it up

If you're choosing a bedside lamp, the base of the shade should line up with your shoulder as you sit in bed against the headboard.

Let it shine

A metallic lamp base will reflect light from above and the lamp itself will shed more light.

70877 Kichler Lamp,
Living Lighting,
www.livinglighting.com

Mix it up

Don't be afraid to mix-and-match different lamp bases using the same shade in a room.

On Trend

1

Eclectic chic Combine flea market finds with designer fixtures.

2

Romantic charm Mix-and-match antiques with new fixtures in neutral colours.

3

Once you go brass, you never go back! Brass is the hottest metal in light fixtures this year. Expect to see this metal in stores across the country.