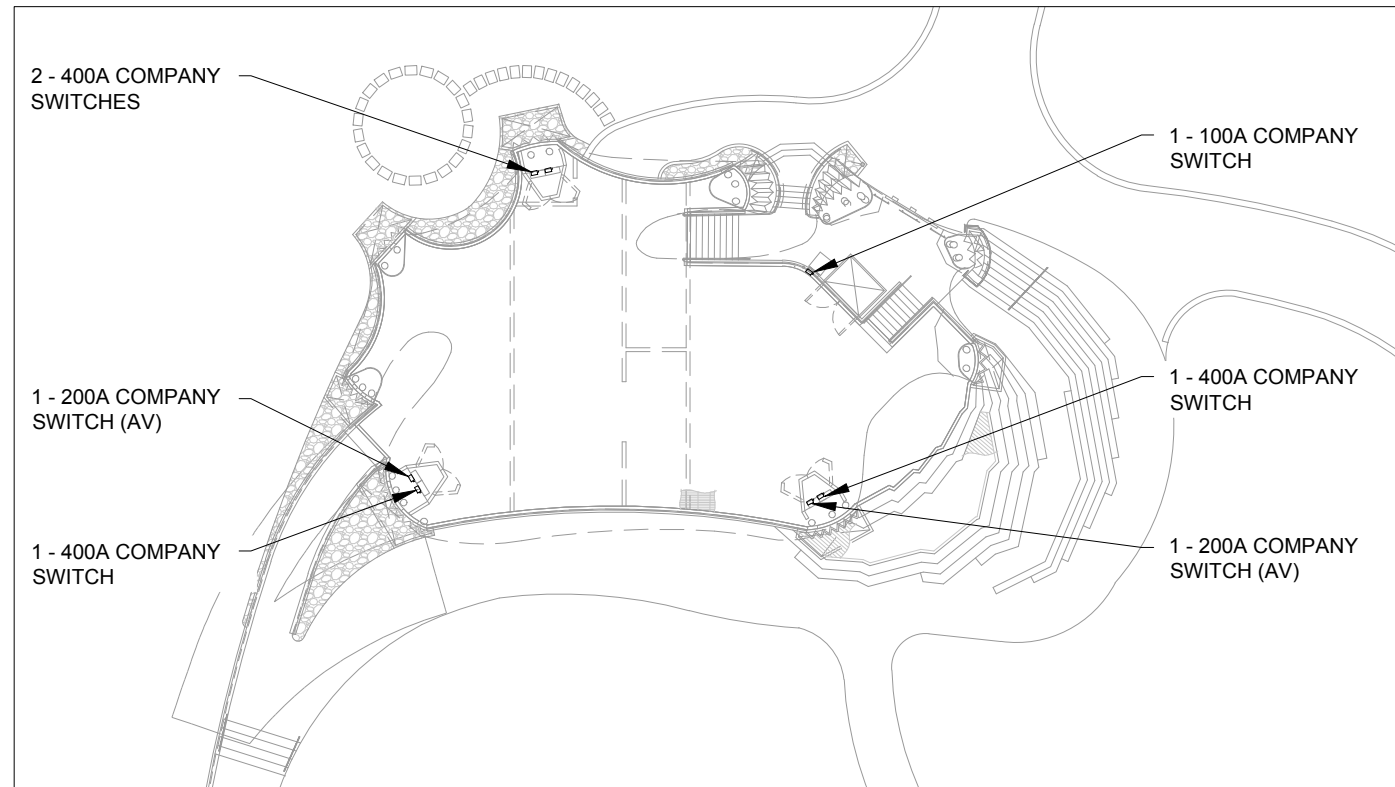
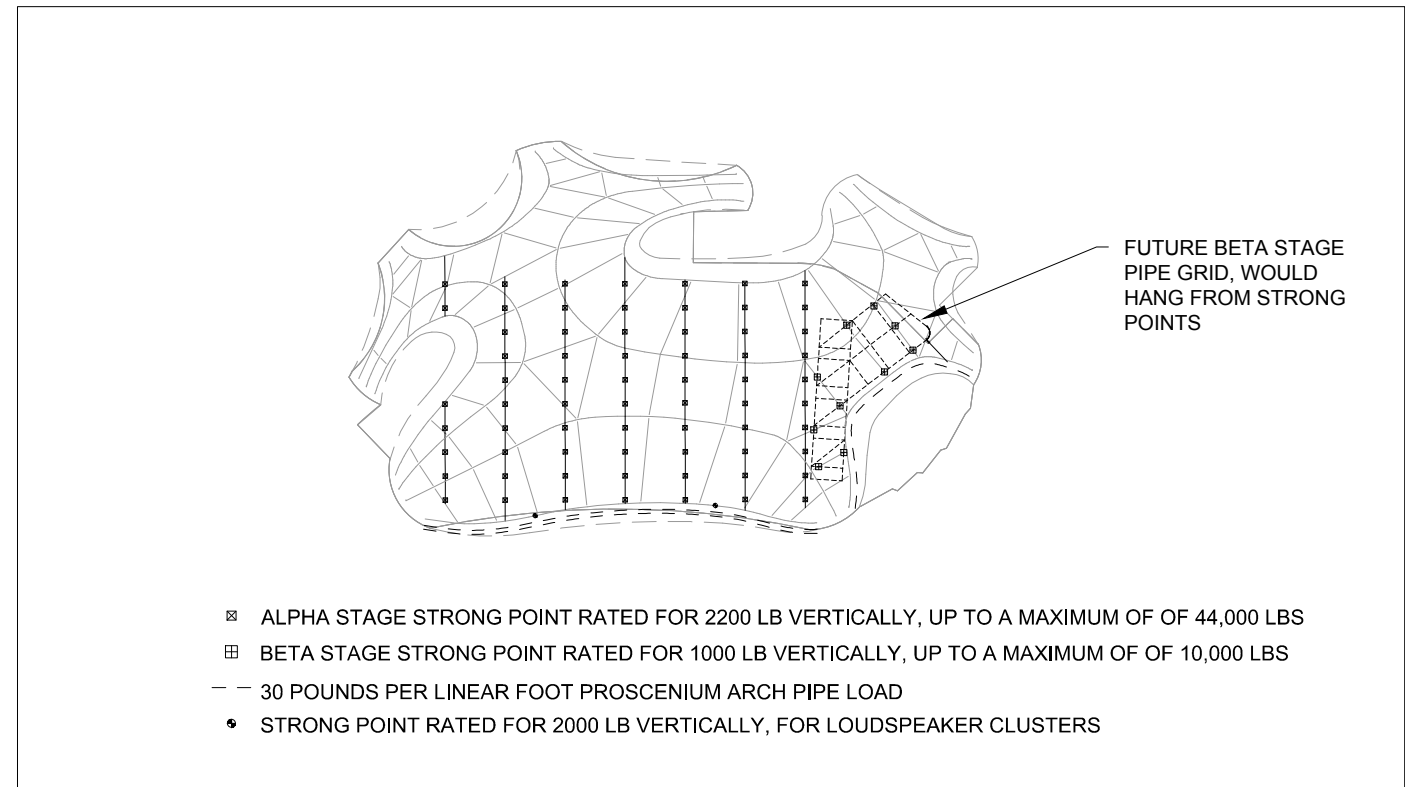


1 BASEMENT PLAN
 SCALE: 1/32" = 1'-0"



2 STAGE PLAN
 SCALE: 1/32" = 1'-0"

Chrysalis Technical Details	Alpha Stage	Beta Stage
Proscenium Width, approximate, ft	59'-6"	27'-3"
Proscenium Height, approximate, ft	40'-0"	23'-0"
Height to rigging points above stage, approximate, low	17'-0"	16'-0"
Height to rigging points above stage, approximate, high	45'-0"	31'-0"
Rigging point live loading capacity, lbs	2,200	1,000
Speaker Cluster Rigging Points live loading capacity, lbs	2,000	N/A
Total Capacity overhead rigging capacity, lbs	44,000	10,000
Stage floor live load capacity, psf	150	150
Future proscenium arch pipes, qty	2	1
Offset from structural tube	8" and 21"	8"
Future proscenium arch pipes, live loading capacity, pounds per linear foot	30	30
Electrical - All company switches are located at stage level beneath Chrysalis shell and can be used for either stage.		
400A Company Switches for Theatre Equipment & Production Lighting	4	
200A Company Switches for Audio (on Isolation Transformer)	2	
100A Company Switches for Chain Motor Rigging	1	
Production Lighting Dimmer Rack - a single dimmer rack of 96 - 20A circuits is installed in the basement. Circuits are distributed around the Chrysalis.		



3 REFLECTED CEILING PLAN - REFER TO LOADING DIAGRAM FOR MORE INFORMATION
 SCALE: 1/32" = 1'-0"

CHRYSLIS - THEATRE INFRASTRUCTURE COMPOSITE - DECEMBER 14, 2016