



A custom metal-and-glass screen from the Cristina Grajales Gallery visually separates the entry from the open living area. Layered pieces of handmade glass adorn a chandelier hanging above a Shir rug uniquely made with lengths of brass sewn into each end.

OPPOSITE: "Rosie," a wood statue by Harry Siter, overlooks a light-filled hallway located off the entry. Eva vertical sconce by Satori; rug by Tania Johnson.



high
style

In Park City, a talented team turns a mountain home into a showcase of sophisticated and surprising design.

BY
BRAD MEE
PHOTOS BY
SCOT ZIMMERMAN



Anne-Marie Barton knows how to make an entrance. For proof, one only needs to step through the front doors of her recent project, a remarkably remodeled Park City home. Once a space completely open to the home's great room, the new, spatially defined entry captivates with a dazzling art screen through which glimpses of the home's updated interior and chic, new décor flow. "We wanted to introduce the unexpected from the get-go," says Barton, principal of AMB Design.

Located in Park City's Glenwild community, the home boasts an enviable location affording spectacular mountain views that loom large through broad walls of windows. Barton and her client knew they wanted to complement rather than compete with the vistas as they transformed the interior's mountain style from predictable to sophisticated, warm and unmistakably modern. "The shell gave us great opportunities," says Barton, who teamed with architect Michael Upwall and contractor Steve Dubell, who masterfully executed the transformation throughout.

From the start, the client brought homebuilding know-how, a craving for the extraordinary and a certain avant-garde attitude to the project. Case in point: Rosie—a floral-headed wood sculpture—looks into

TOP LEFT: Throughout the home, new mixes with old, surprises mix with subtlety. In the living room, expanses of steel and a custom fireplace surround by Metalmorphic update a stone fireplace filled with stacked stone balls rather than firewood. Playa sectional by Holly Hunt; ottoman by Jean De Merry.

TOP RIGHT: Displayed in a custom frame, an art screen bejeweled with sparkling rondels links the entry and great room. Upholstered bench by Holly Hunt; console by Gregorius | Pineo.

OPPOSITE: A suspended wood ceiling trimmed in metal follows the curve of the original ceiling and serves as a canopy that visually warms and grounds the great room's space.





the entry from an end-of-the-hall inset where a coat closet originally existed. The hall, once dark and dreary, is now window-lined and light-filled. Its openness accentuates the sculpture's head-turning presence. "The homeowner allowed us to dream big and go out of bounds," Barton says. "It was so liberating and fun for everyone involved."

The transformed entry opens to a large, glass-walled great room that flows beneath a soaring curved ceiling and is comprised of the main living, dining and kitchen areas. Barton updated the existing stone fireplace with

a dark steel facing and surround. The same steel detail trims a spectacular dropped wood ceiling devised by architect Michael Upwall. "The suspended ceiling helps to warm and ground the space," says Barton, who furnished the sitting area below with a Holly Hunt sectional, Jean De Merry ottoman and a vintage Laverne cocktail table, all set on Warp & Weft rugs. "We layered the rugs to instill a little visual tension," Barton says.

In the adjoining dining area, Barton suspended a light fixture comprised of hand-blown glass tubes above a custom walnut-and-brass table. Above the nearby



ABOVE: A Coup Studio chandelier comprised of hand-blown glass tubes hangs above a custom walnut-and-brass table paired with Holly Hunt chairs. An Ochre antique mirror layered with art by Jill Barton rests on a custom console. Nearby, a uniquely designed island anchors the kitchen space beneath Roll & Hill pendants. Barton cleverly hid the hood in cabinets above the range. "This kitchen is all about restraint," she says.

TOP RIGHT: Integrated into the upper cabinets, an open shelf of stained wood displays a small collection of glasses and tableware.

BOTTOM RIGHT: At the island's end, a "block" of walnut appears to shoulder the slab of light-toned, honed stone. The wood also clads the underside of stone that frames the counter seating area.



kitchen island, reflective origami-shaped pendants showcase a decidedly dissimilar style. “The lights don’t compete but are both surprises,” she explains. The remodeled kitchen, while “quiet and sublime,” is riddled with similarly unexpected and intriguing features.

The island, for example, boasts a wood “block” that extends beyond the light-toned, honed stone at one end and a waterfall stone detail on the other. A pocket-doored breakfast bar, dressed with over-scaled nickel handles, opens to easily accessed appliances, and a stained-wood shelf notched into upper cabinets displays a small vignette of clustered dishes. While some features are eye-catching and others discreet, all are impressive design elements. Perhaps most notable is what is not visible at all. “We hid the hood in the cabinets above the range,” says Barton, who rejected an obvious hood to enable the island’s unique design to prevail.

Barton didn’t save all her surprises for the public areas of the home. Far from it. Large-scale floral wallpaper animates a guest bedroom, vibrant blue encaustic cement tile enlivens the laundry room, and flourishes of luxurious, sophisticated treatments elevate the style and comfort of the master suite. There, mountain views surround a freestanding tub and tear-like lights hanging above.

RIGHT: The light-filled office adjoins the master bedroom. Plum blossom wallpaper by De Gournay spans an entire wall. An antique crystal chandelier and a screen from Cristina Grajales Gallery add sparkle to the elegant space.







1



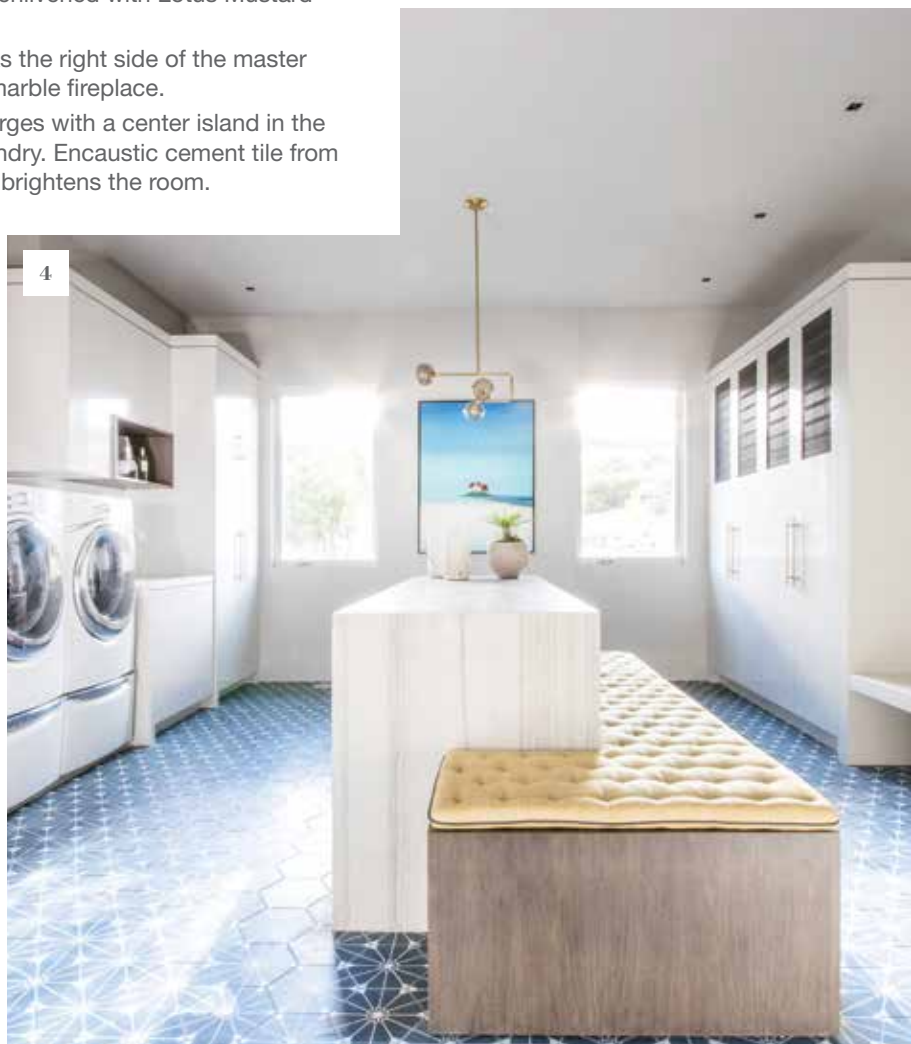
2

MASTERING THE DETAILS

1. Brass trims the mirrors and the window in the master bathroom. Cabinetry by Premier Woodwork & Design.
2. "Wallcovering changes the spirit of any room," Barton says, as proven by this bedroom enlivened with Lotus Mustard paper by Harlequin.
3. Narrow brass shelving flanks the right side of the master bedroom's floor-to-ceiling marble fireplace.
4. A tufted bench uniquely merges with a center island in the multipurpose mudroom/laundry. Encaustic cement tile from European Marble & Granite brightens the room.



3



4



A floor-to-ceiling marble fireplace warms the serene bedroom, and oversized plum blossom patterns span the wall of an ultra-chic office area. Perhaps most memorably, the art screen showcased in the entry makes a second appearance in the suite, making one fall in love with the unique feature all over again.

It all adds up to an engaging interior that is refined and understated, but full of memorable mo-

ments. "It was a mountain home begging for a sophisticated transformation," Barton recalls. Thanks to her deft use of detail and passion for compelling design, that's exactly what it received. ■

ABOVE: In the master bath, a Hydro Systems freestanding tub sits below a patinated-bronze-and-solid-glass droplight by Ochre. Views of the home's Park City mountain setting flood the lux space.

RIGHT: Anne-Marie Barton, principal of AMB Design

