

House VII

House 7 completes the basalt stone form and not only has a garage door that goes into the stone wall but also an arched stone opening into the entry plaza. House 7 has a vaulted 2 story form that anchors the house. It has similar detailing to House 6 and has shared a zero lot line wall. House 7 has varied forms, unique windows and multiple decks with views of the Cascades.



Home Size | 3,548 sf **Lot Size** | 9,007 sf
 lower 909 sf / main 1,195 sf / upper 1,444 sf

Bedrooms | 3 with en suite bathrooms

Car Storage | 2 car attached garage

Great Room/Living Room | with lots of glass and light, a large deck with views of the mountains, wood flooring and a media wall.

Gourmet Kitchen | Work island with zero radius stainless sink, Blanco Culino faucet, quartz countertops, custom cabinetry, stainless Fisher & Paykel appliances with a 36" Italian gas range, and exposed chimney range hood

Master Suite | upper level master bedroom with spacious walk-in closet and luxurious bath suite with soaking tub, walk in shower, large

format porcelain tile floors, and dual sinks

Family room on the Lower Level

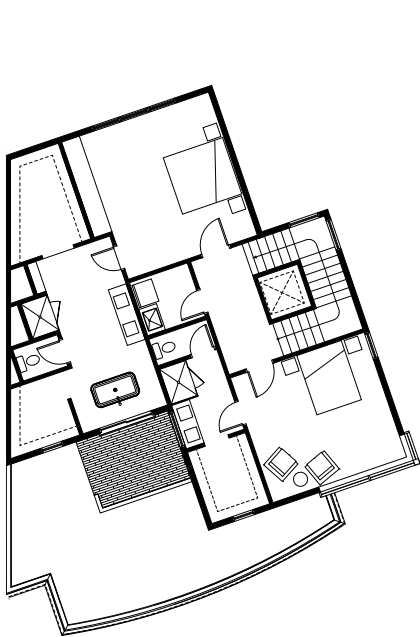
Master Suites 2 | upper level master bedroom with huge walk-in closets and luxurious bath suite with soaking tub, walk in shower, large format porcelain tile floors, and dual sinks

Laundry | 1 on upper, 1 on lower level

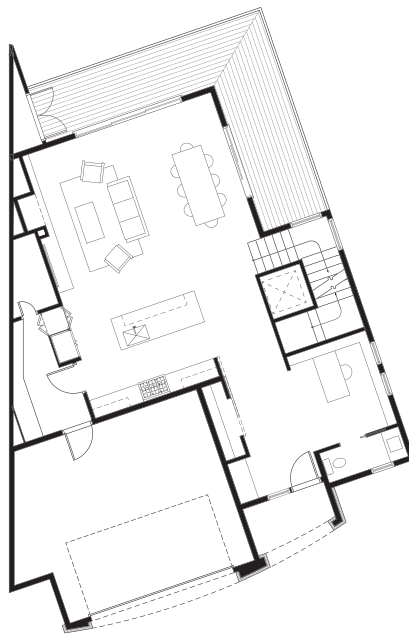
Linear Gas Fireplaces in Great Room and Master Bedroom

Exterior Materials | cement board siding, rain screen technology, single-ply membrane flat roof, metal barrel vault, fiberglass windows

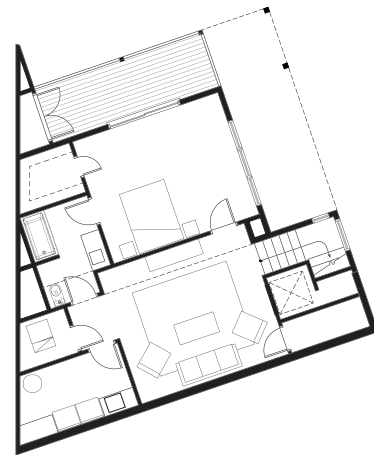
Earth Advantage Certified | dual zone heating system with high efficiency gas furnace and air conditioned upper level



UPPER FLOOR



MAIN FLOOR



LOWER FLOOR

