

House VI



House VI features a basalt stone wall that follows the curve of the property and street. The glass garage door punches into the stone wall creating an inviting street façade. The main entry is part of the two story sloped roof form that anchors the house. The 2nd story window extends from the building mass and complements the varied forms that create the house as it cascades down the hill. Multiple decks overlook the hillside water feature and the hillside with views of the mountains. The house shares a zero lot line with the adjacent House VII.

Home Size | 3,546 sf **Lot Size** | 5,303 sf
lower 931 sf / main 1,150 sf / upper 1,465 sf

Bedrooms | 3 with en suite bathrooms plus a bonus room (BR#4)

Car Storage | 2 car attached garage

Great Room/Living Room | with lots of glass and light, a large deck with views of the mountains, wood flooring and a media wall, contemporary open stair with metal railing

Gourmet Kitchen | Work island with zero radius stainless sink, Blanco Culino faucet, quartz countertops, custom cabinetry, stainless Fisher & Paykel appliances with a 36" Italian gas range, and exposed chimney range hood

Master Suite | upper level master bedroom with spacious walk-in closet and luxurious bath suite with soaking tub, walk in shower, large format porcelain tile floors, and dual sinks

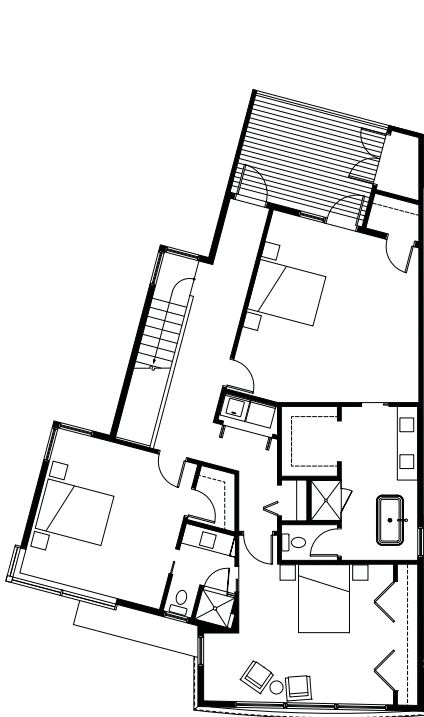
Family Room on lower lever

Laundry | 1 on upper, 1 on lower level

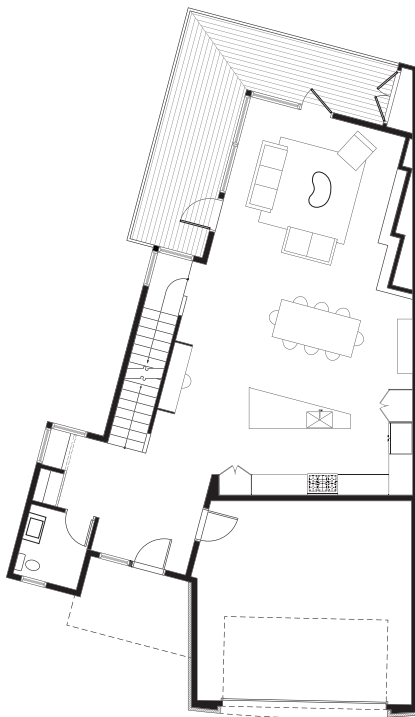
Linear gas fire place in great room

Exterior Materials | cement board siding, rain screen technology, single-ply membrane flat roof, metal barrel vault, fiberglass windows

Earth Advantage Certified | dual zone heating system with high efficiency gas furnace and air conditioned upper level



UPPER FLOOR



MAIN FLOOR



LOWER FLOOR

