

Sophisticated Curves

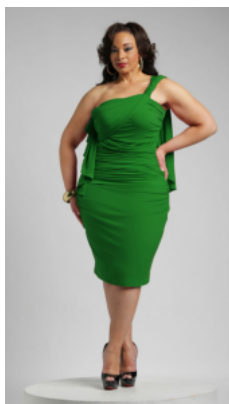
Online Plus Size Clothing Boutique

Menu

Apr
17
2016

Call I Pull Off an Asymmetrical Dress?

Author: [Jen Anderson](#) • Discussion: [No Comments](#)



Mina dress in Green (front)

An asymmetrical dress may seem a little out there. It's so trendy and high fashion. It's no wonder that some women think that they can't possibly wear an asymmetrical dress. But the truth is that asymmetry looks good on everyone.

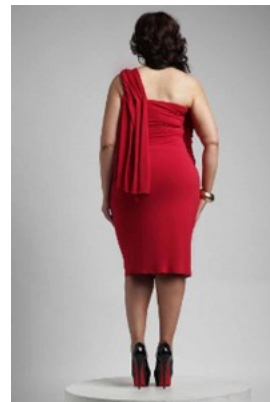
Let's consider the [Mina Dress](#) from Shavonne Dorsey. This dress flatters pear shaped women, hourglasses, rectangle shaped women and inverted triangle shaped women. (Apple shaped women look and feel better in clothes that skim over their stomach, which Mina doesn't do. They still look good in asymmetrical dresses – just not this one.)

This dress's asymmetry draws people's eyes towards the single strap and away from your stomach – which, by the way, only you are paying attention to. We all worry about how our belly looks in an outfit when everyone is actually looking at our faces. Asymmetry can help you feel more confident about how you look because it draws the eye away from what you might think are problem areas. You don't have to be a confident dresser to wear an asymmetrical dress. The dress supplies the confidence for you.

Mina features asymmetrical draping over the bust and a sweep of fabric that cascades down one side of the back – even more asymmetry. It may seem like a lot of look if you usually dress simply. But the different asymmetrical elements work together harmoniously to make an elegant look. [Mina](#) isn't understated, but it isn't high fashion, wearable art only meant for the runway either.

Once you learn to embrace asymmetry, you'll have a quick and easy way to be the most fashionable person in the room. Half the women at the party will think that you're so stylish and fashion forward because you're wearing a style they're afraid of. There's no need to let them in on the secret that they have nothing to fear.

Shavonne Dorsey's Mina Dress is available exclusively in plus sizes, in [green](#), [melon](#) and [black](#).



mina dress in melon (back)

Call I Pull Off an Asymmetrical Dress? was last modified: April 17th, 2016 by Jen Anderson

Tagged with: [cocktail dresses](#), [date night](#), [date night dresses](#), [plus size dress](#), [plus size dresses](#), [plus size fashion](#), [Plus Size Red Carpet Fashion](#), [shavonne Dorsey](#)

Posted in: [Shavonne Dorsey](#)

Post navigation

Previous Post: [Plus Size Trend: Red Carpet Glamor](#)

Next Post: [Plus Size Trend: Bodycon](#)

[Leave a reply](#)