

We recommend that you purchase a backflow bag for your backflow device.

Your backflow device needs to be **protected** against sudden cold snaps *if we have not yet performed your winterization OR we have started your system up in the early spring.*

We have researched the market for reliable protection and are pleased to offer a rugged Back-flow Blanket. It is an insulated polyfill core covering constructed with a 22 oz poly-vinyl cover that is UV resistant and waterproof. Each seam is double sewn to seal out all weather elements and it comes with two brass grommets to secure the bag. It has been tested for up to 10 hours in zero degree temperatures. This will allow you to utilize your irrigation system late into the fall or early in the spring without worrying about sudden cold snaps.



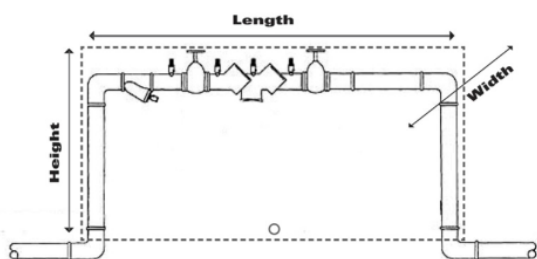
Order yours today:

\$175.00 includes customized blanket, delivery and set in place for units that measure up to 65 total linear inches.



Detach and send in with your payment of \$175.00.

date:	
technician:	
homeowner name:	
street address:	



exact height:	
exact length:	
exact width:	
order measurement 1 - height (add 2"):	
order measurement 2 - add length + width:	