

Forest Lake Eurasian Watermilfoil 2015

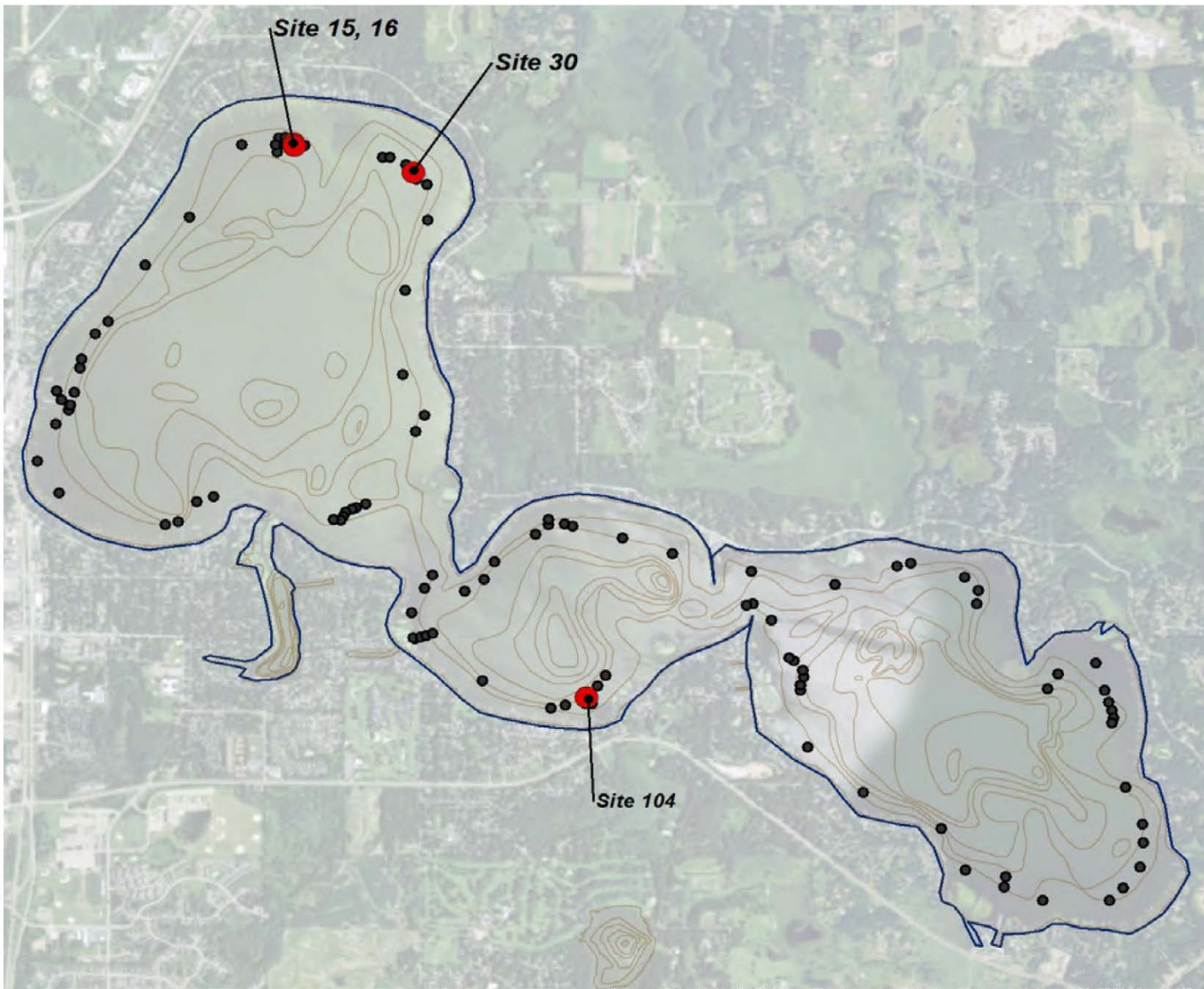


Figure 1. On June 10, 2015, Eurasian watermilfoil was found at 4 sites (shown with red dots). Black dots represent sites sampled with no EWM observed.

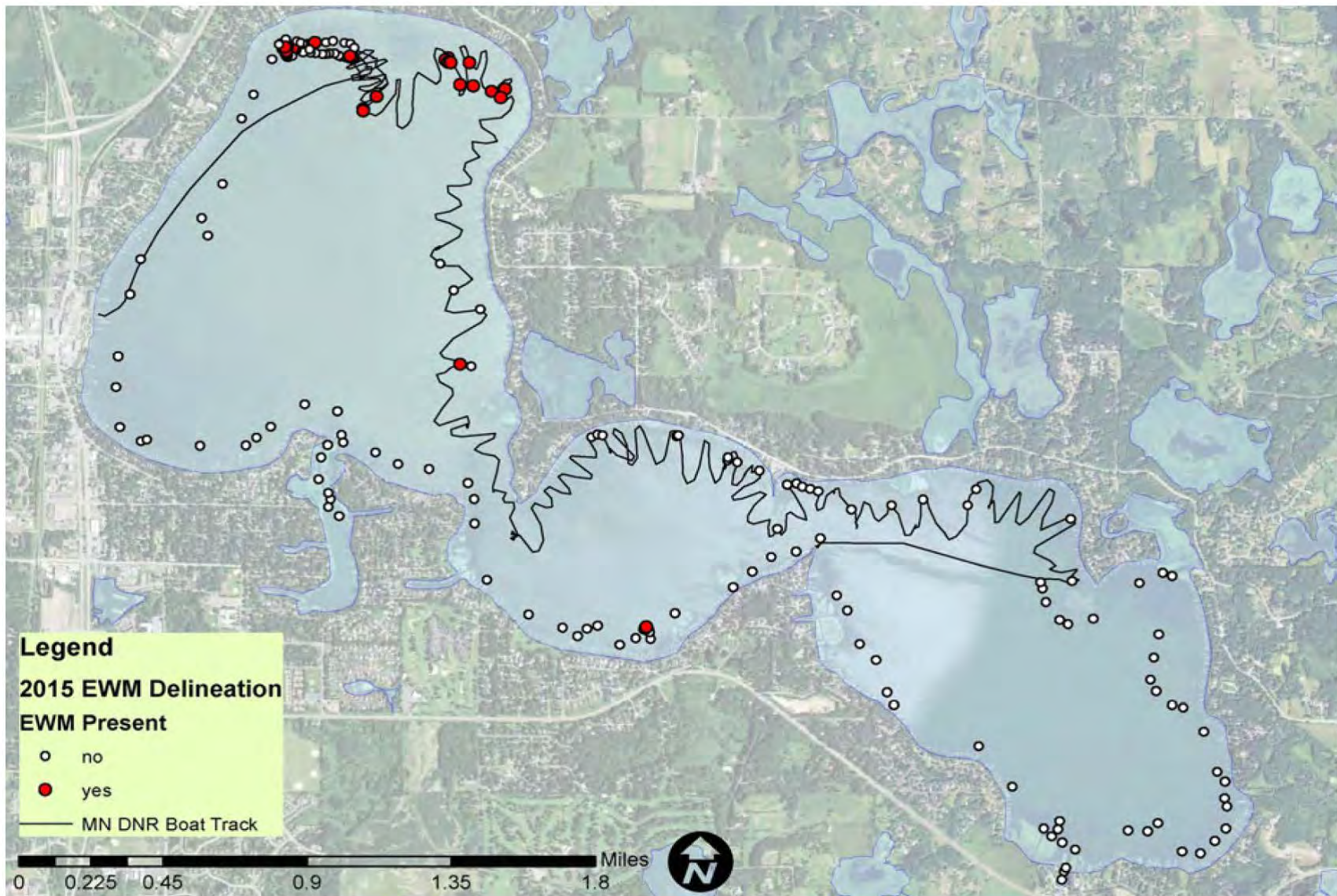


Figure S1. MnDNR EWM delineation combined with Blue Water Science delineation, June 23, 2015. All observed EWM was treated on July 1-2, 2015.

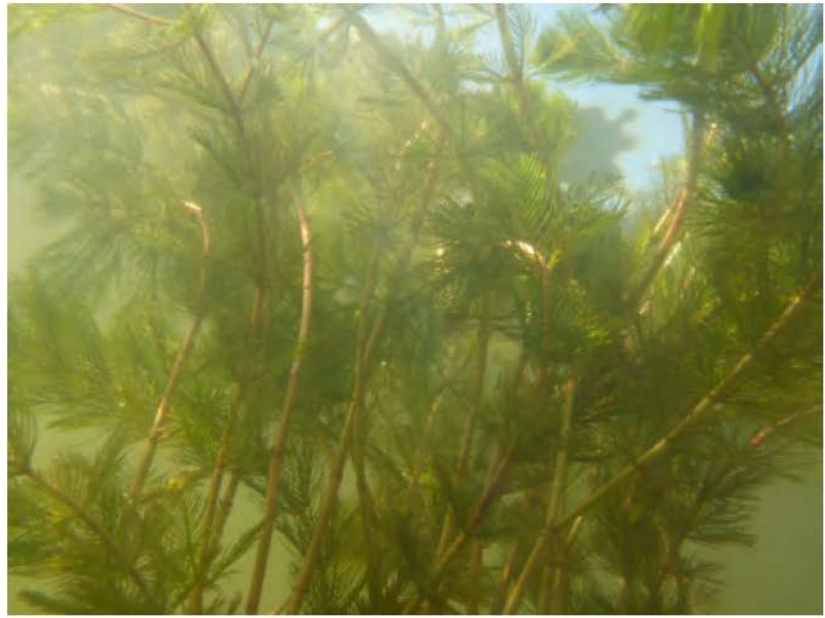


Figure 3. EWM sampling by Blue Water Science (left) and MnDNR (right). Examples of different growth patterns of EWM in Forest Lake on June 23, 2015 are shown in the bottom 4 pictures.

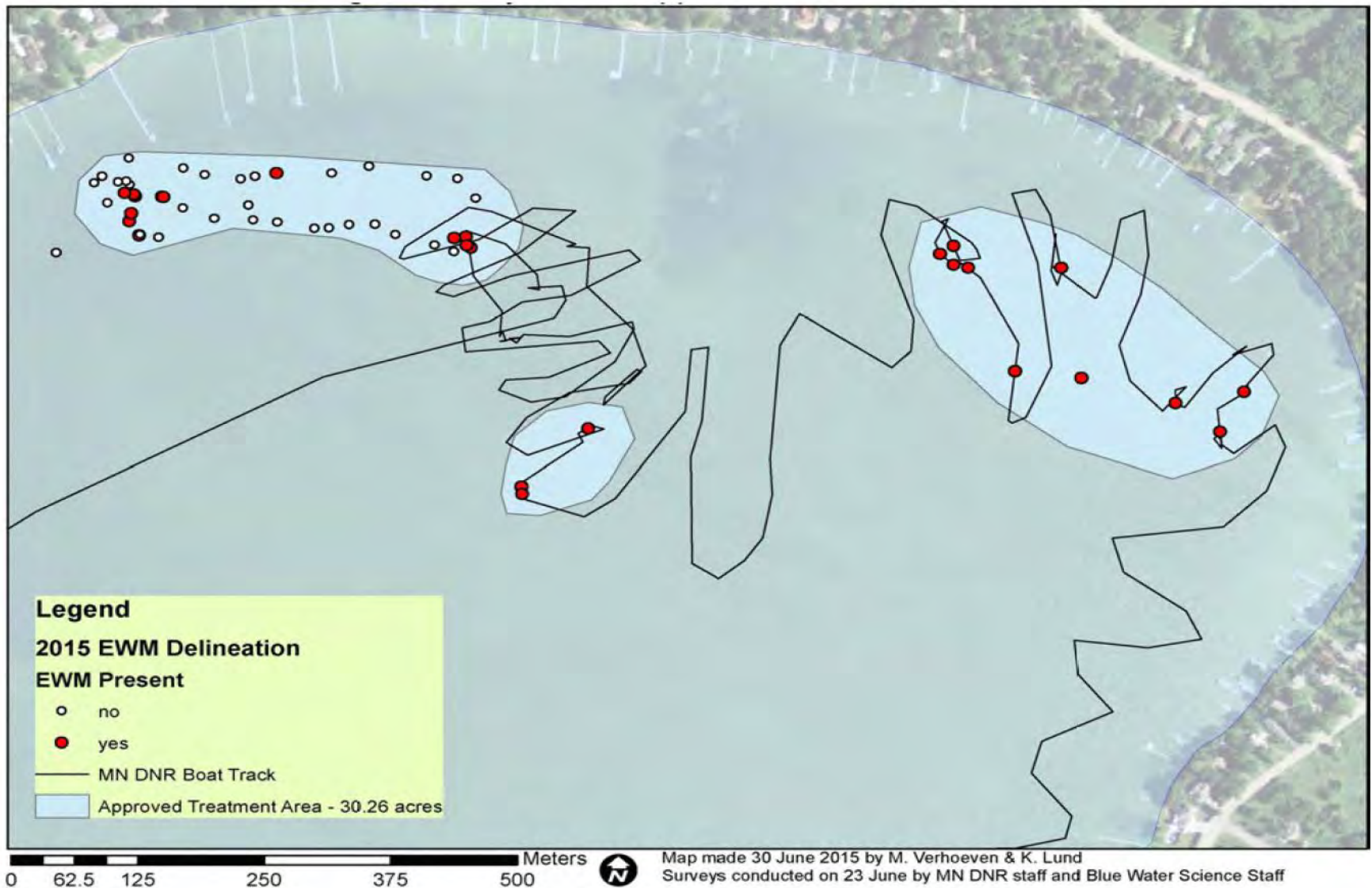
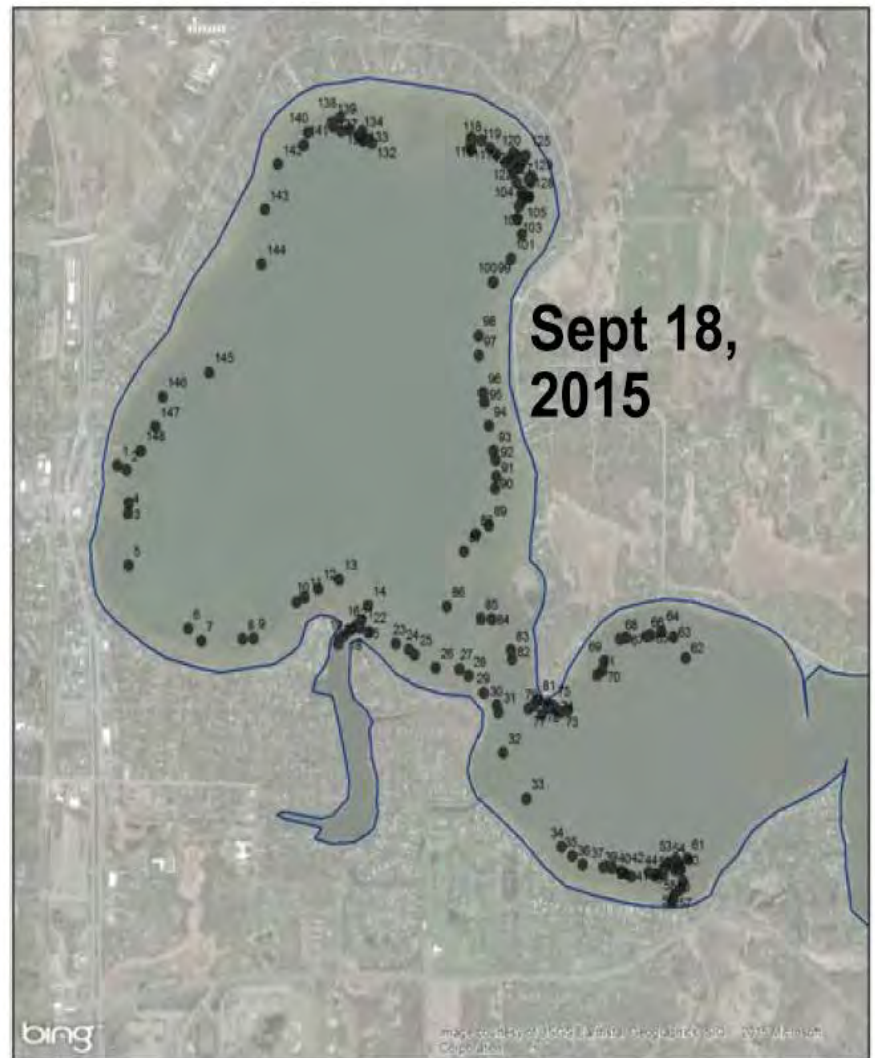
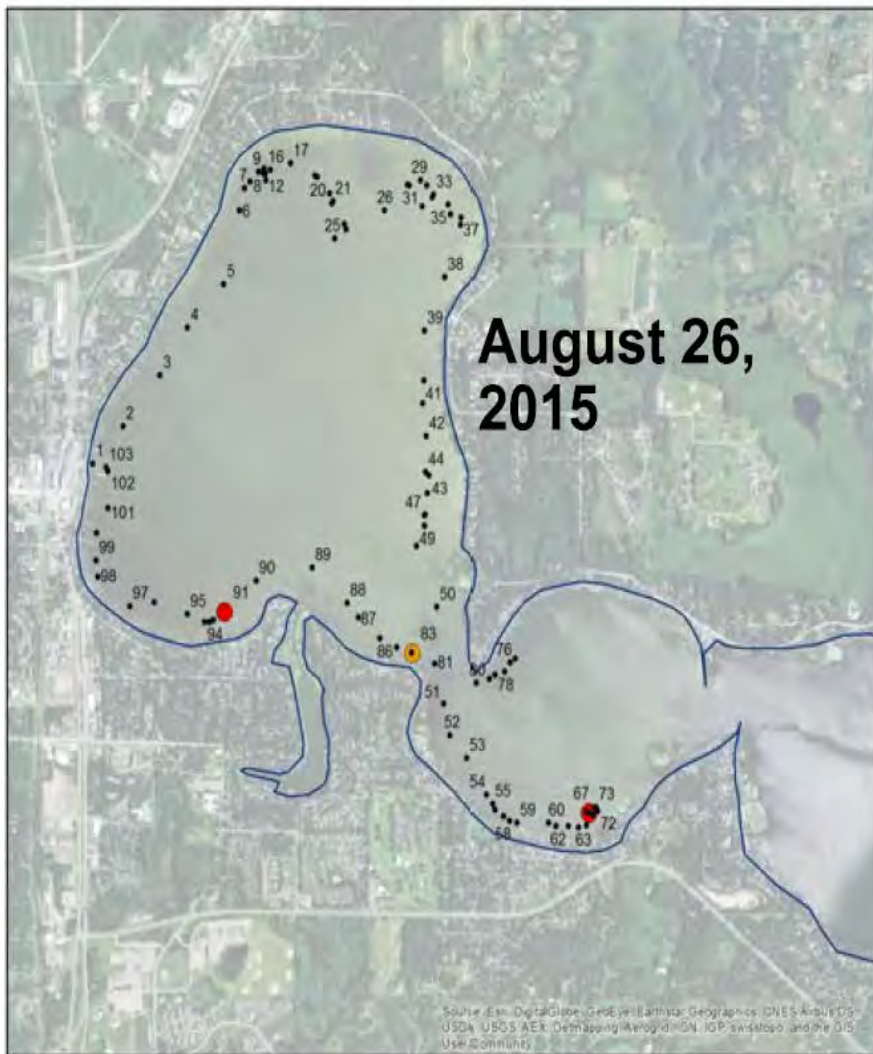


Figure 4. EWM approved treatment locations for 2015.



Forest EWM Assessment Aug. 26, 2015

- Floating Eurasian Milfoil
- Eurasian Milfoil Found
- No Eurasian

Forest Lake, Washington County
Inventory Number: 820-159-00

Blue Water Science
Steve McComas
UTM NAD 1983

- No Eurasian Watermilfoil

Sites Sampled September 18, 2015

Forest Lake, Washington County
Inventory Number: 820-159-00

Blue Water Science
Steve McComas
UTM NAD 1983

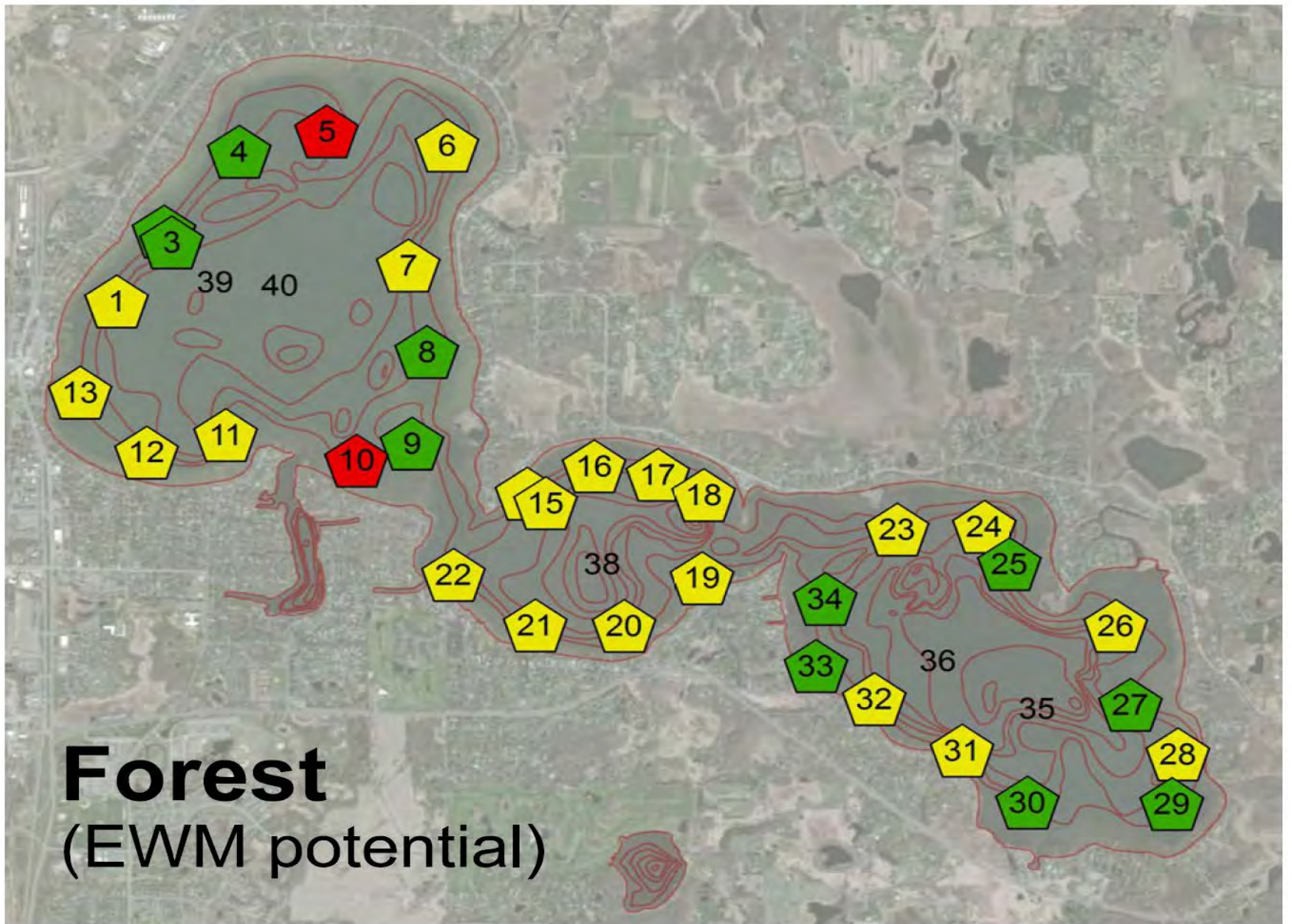


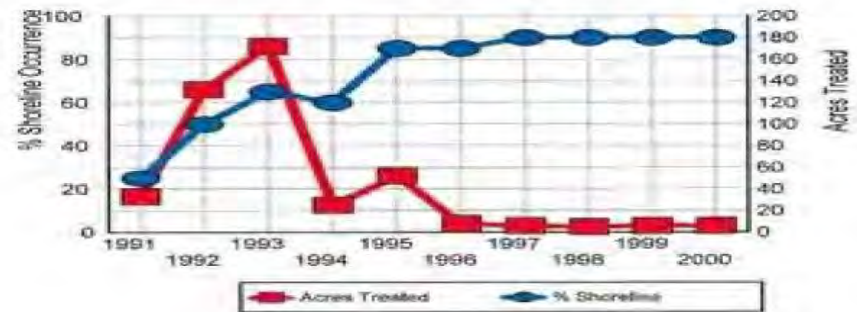
Figure 7. Eurasian watermilfoil potential growth based on lake sediment analyses.
Key: Green = light growth, yellow = moderate growth, red = heavy growth.

Once In a Lake, Milfoil Will Spread

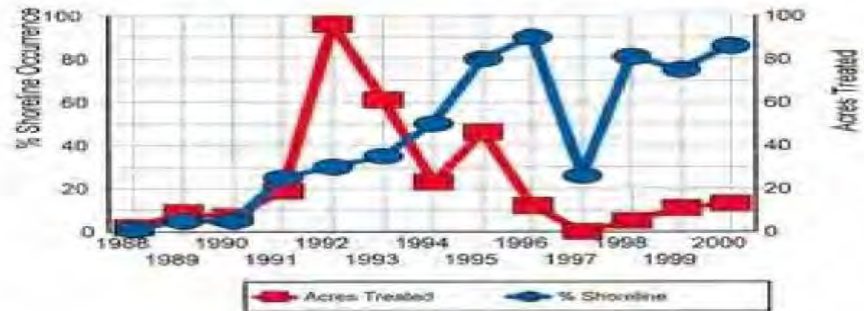
Seems to Take Up To 8 years to Get Around the Lake

The Question Is:
What kind of growth will milfoil or curlyleaf produce in a lake?

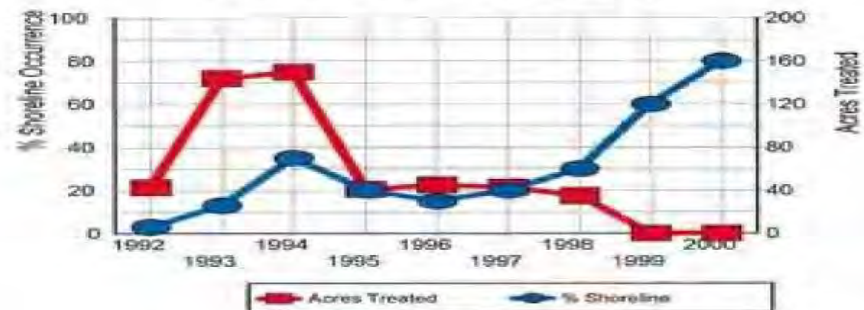
Lower Prior Lake (810 ac)



White Bear Lake (2,400 ac)



Rush Lake (2,800 ac)



The spread of EWM in 3 lakes over a number of years.