

Notes

- No lights on Grids 3,4,7,&12
- Grid Trim ~26'
- Final table placement TBD
- All Source 4 PARNels need to be set to full flood
- Back light may be replaced with ETC Source 4 Lustr+

Priority Days

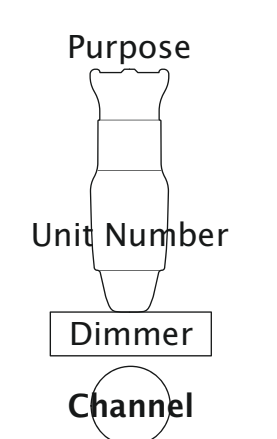
Drawn By: Anthony Miller

Venue: ABC Studio B

Date: 3/10/16

Key:

- ETC Source 4 26'
- ETC Source 4 36'
- ETC Source 4 50'
- ETC Source 4 PAR (WFL)
- ETC Source 4 PARnel



Revision:

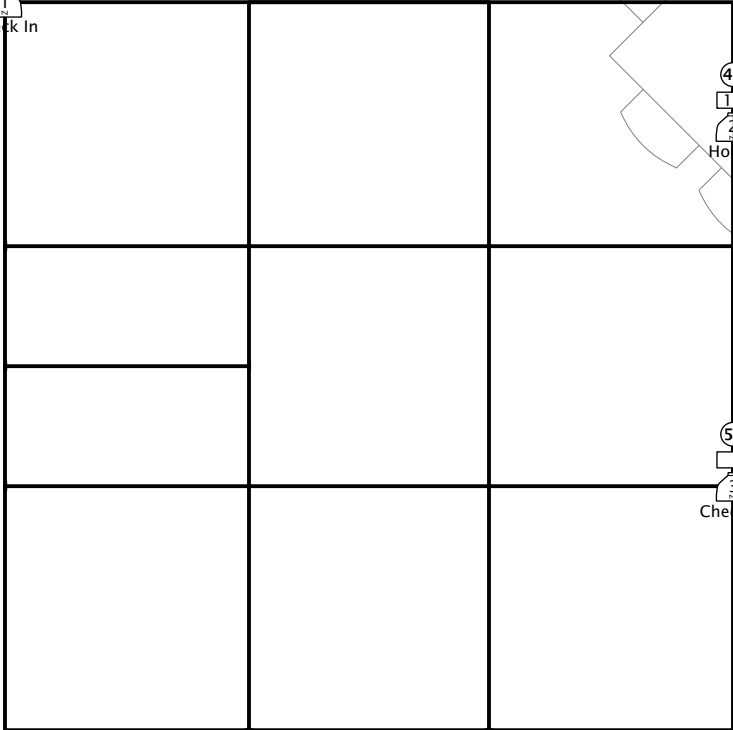
A



↑
US

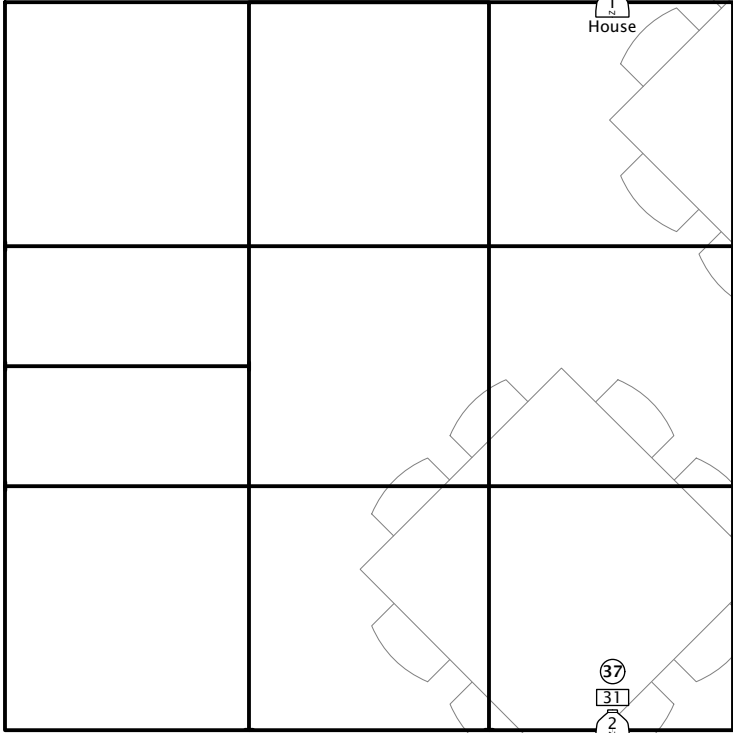
51
6
↓
Check In

Grid 1



41
18
2
House
52
3
Check In

Grid 2



31
36
1
House

37
31
2
House

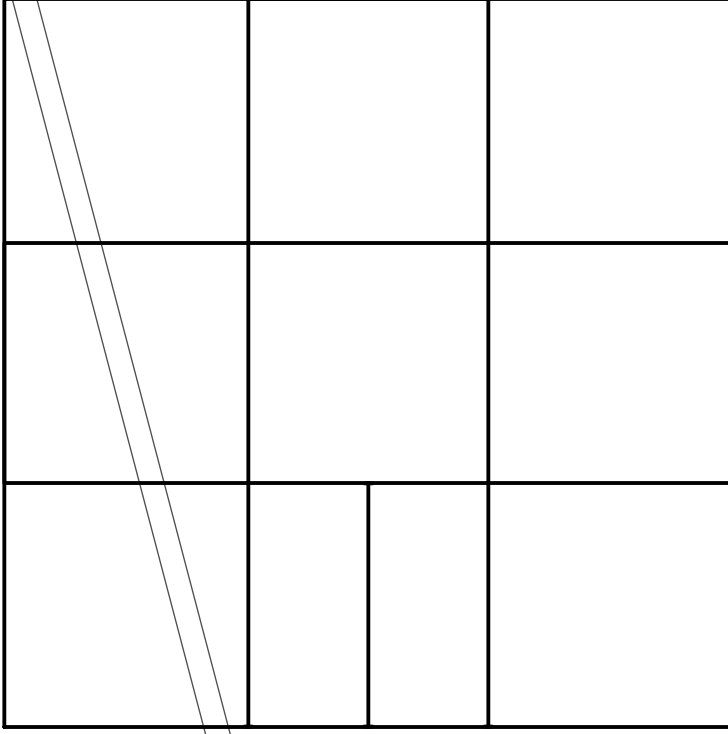
Grids 1 & 2

1
of
8

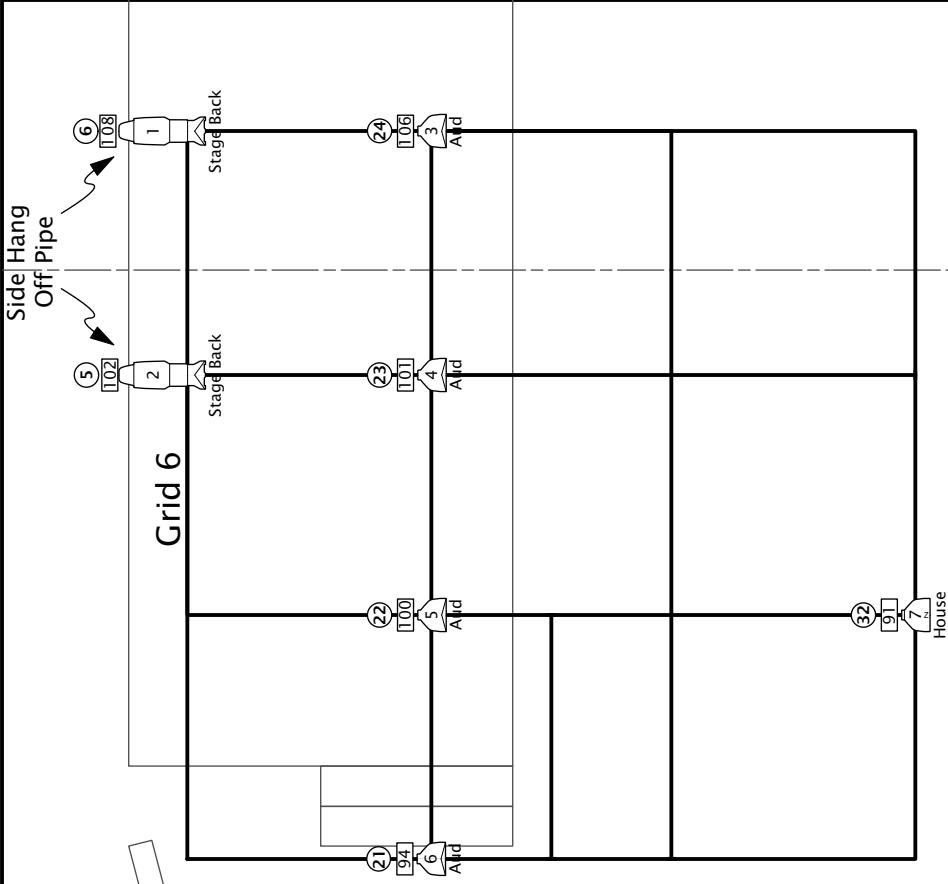
Priority Days

↑
US

Grid 3



Grid 6



Grids 3 & 6

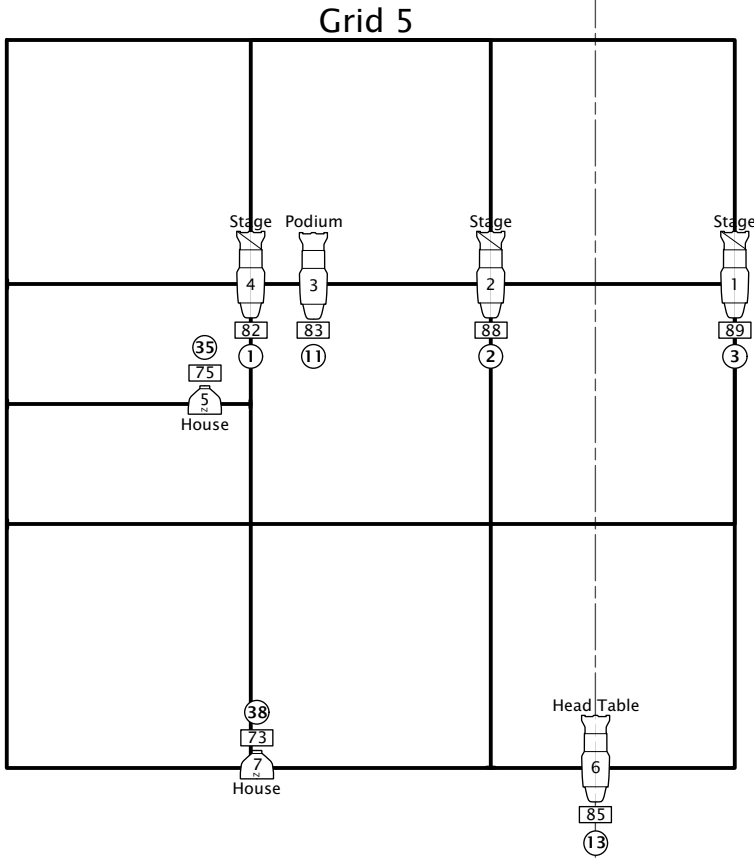
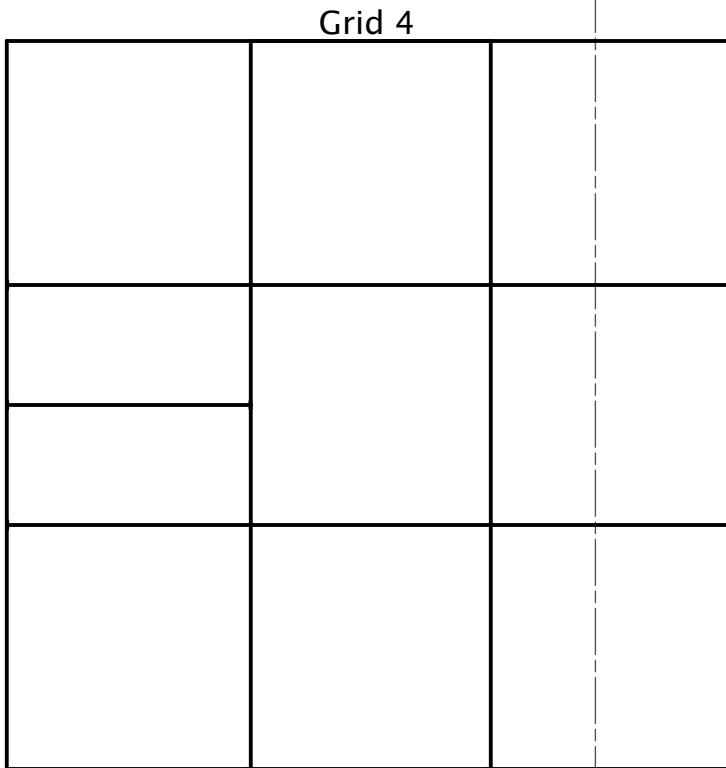
Priority Days

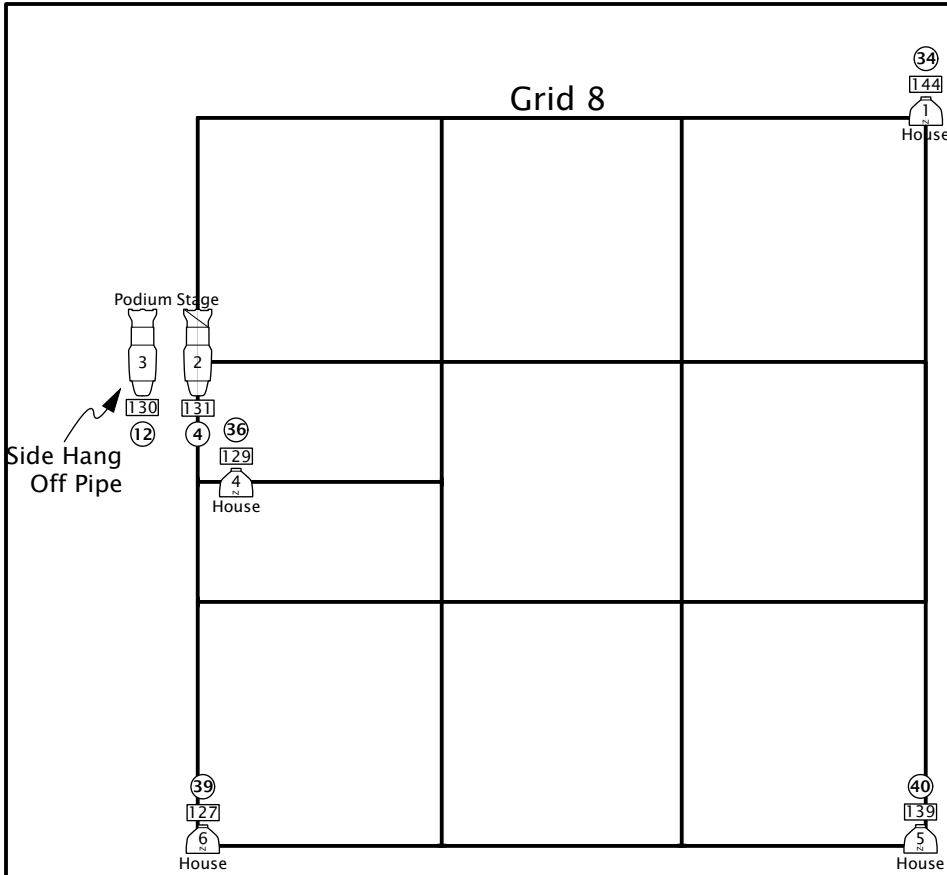
2
of
8

Grids 4 & 5

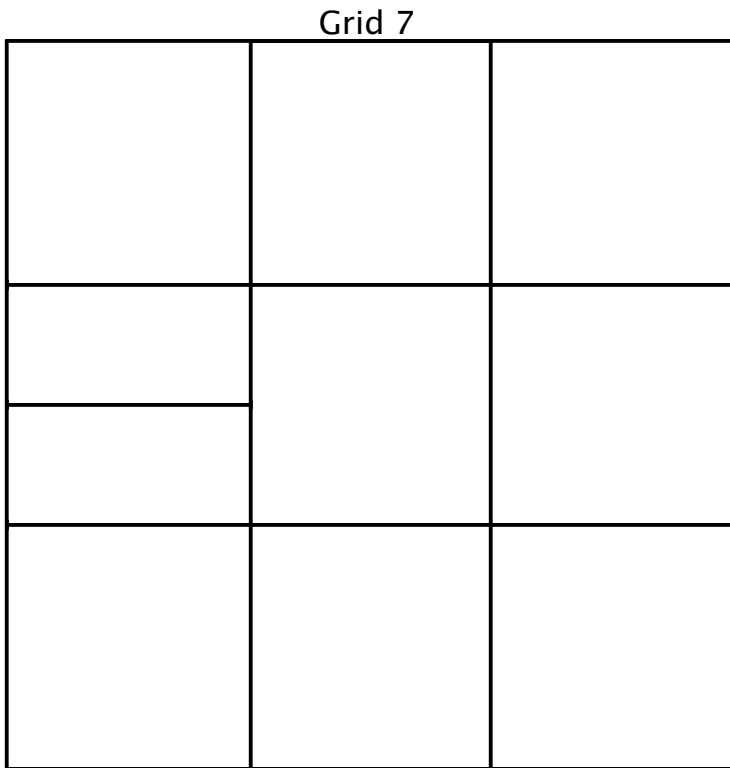
Priority Days

↑
US





↑
US



Grids 7 & 8

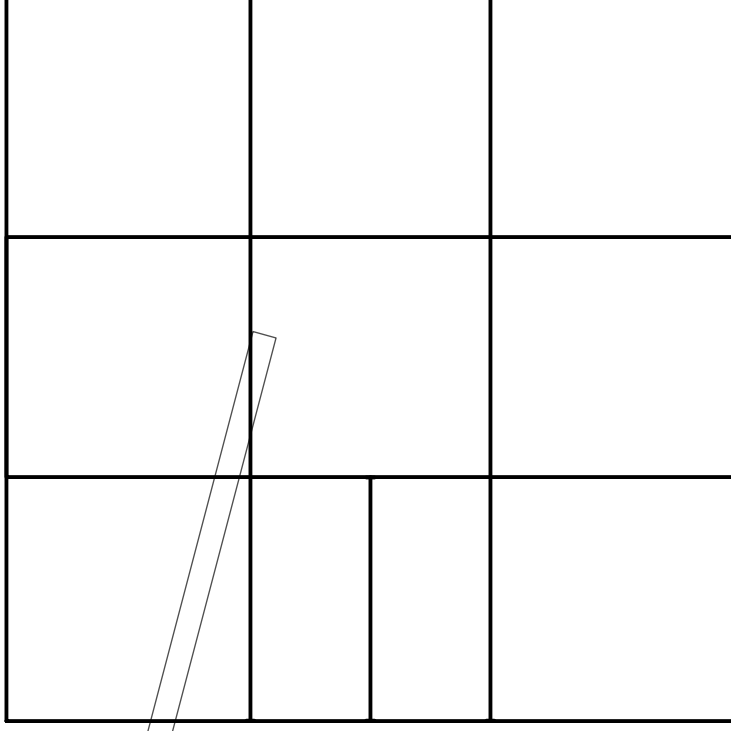
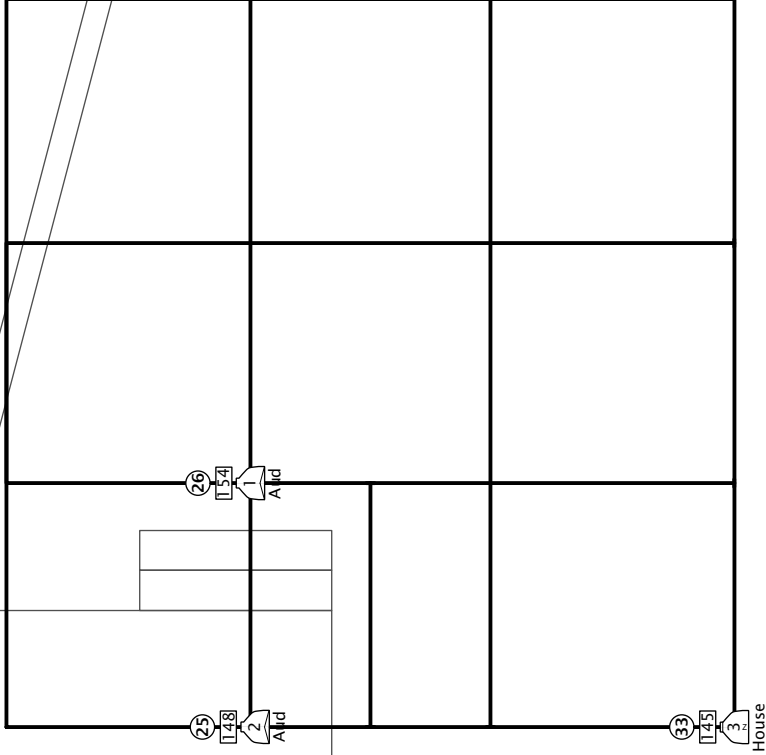
4
of
8

Priority Days

↑
US

Grid 9

Grid 12

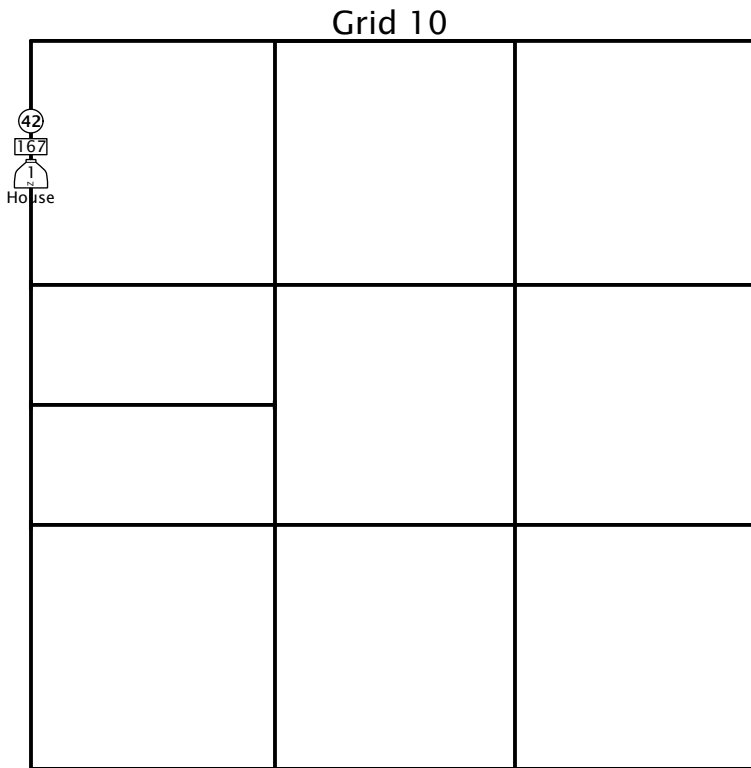
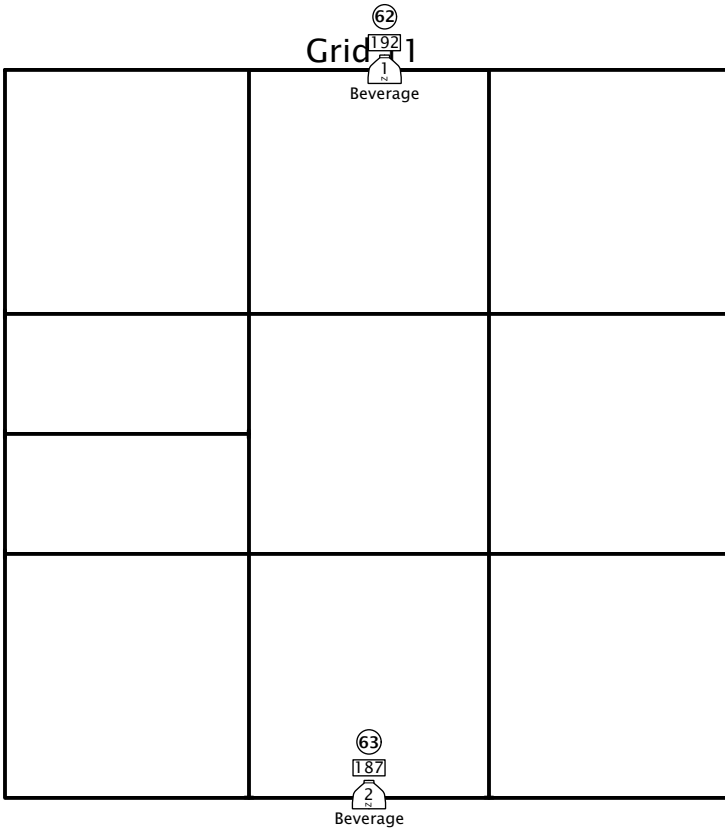


Grids 9 & 12

Priority Days

5
of
8

↑
US



Grids 10 & 11

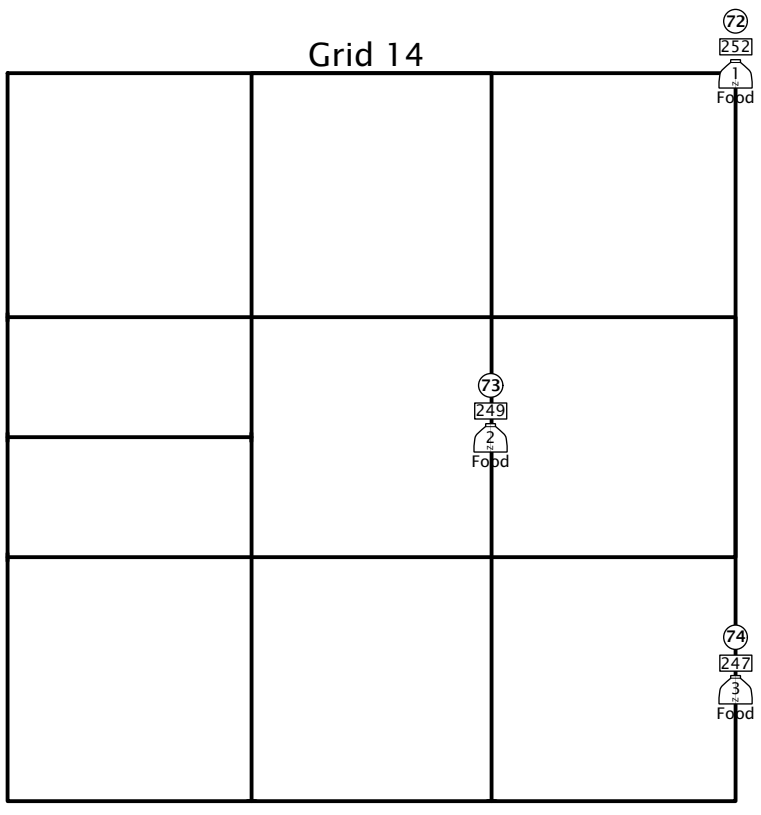
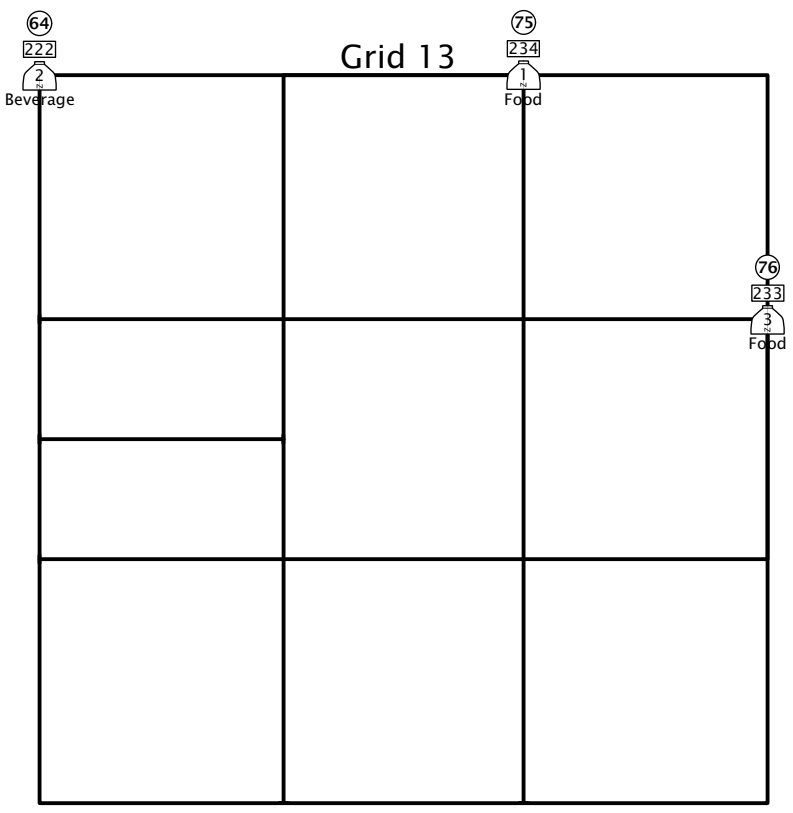
6
of
8

Priority Days

Grids 13 & 14

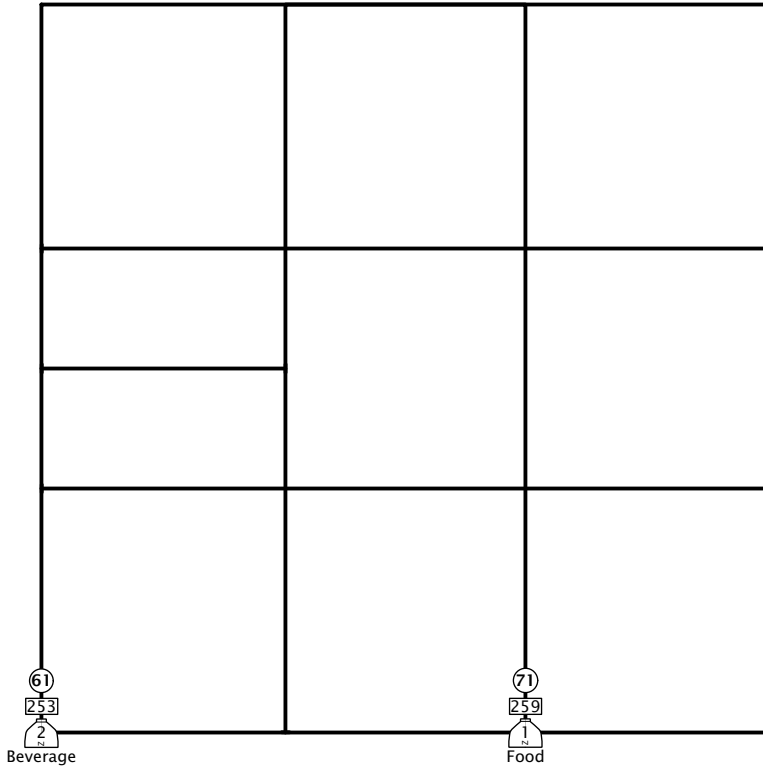
Priority Days

↑
US



↑
US

Grid 15



Grids 15

8
of
8

Priority Days