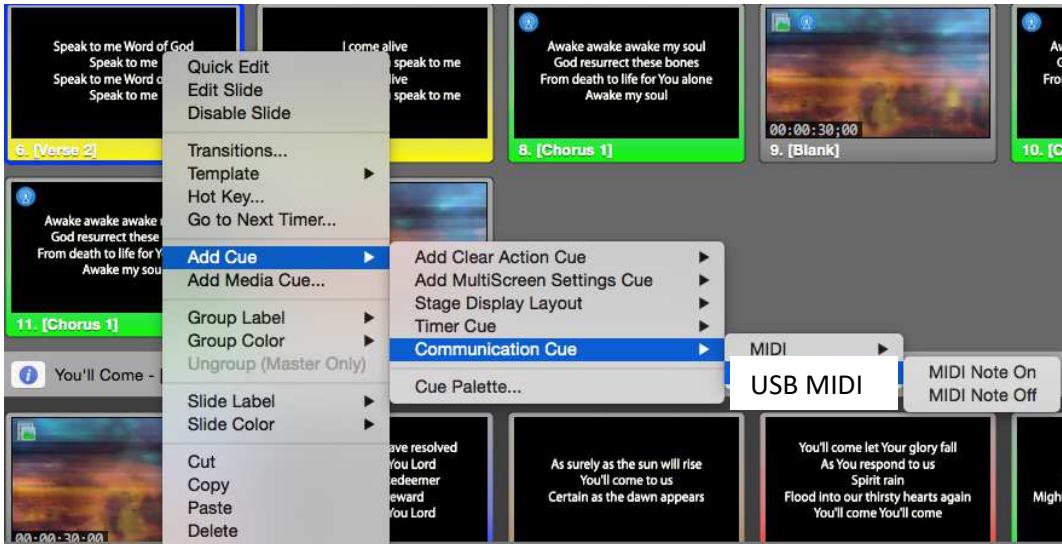


ProPresenter Ion Control

- ❖ Open ProPresenter
- ❖ Select the desired slide and add note
 - Right click and select “Add Cue> Communication Cue> **USB MIDI**> MIDI Note On”



- ❖ Set Note Options
 - Device= USB MIDI
 - Command= MIDI Note On
 - Channel and Note Info:
 - Go = Channel 1, Note 0
 - Back= Channel 1, Note 127
 - Cues 1-100= Channel 1, Notes 1-100
 - See Back for Subs
 - Intensity must be 1 or greater



Sub Information

(Channel 2, Note #)

Sub	Out	25%	50%	75%	Full
1	1	2	3	4	5
2	6	7	8	9	10
3	11	12	13	14	15
4	16	17	18	19	20
5	21	22	23	24	25
6	26	27	28	29	30
7	31	32	33	34	35
8	36	37	38	39	40
9	41	42	43	44	45
10	46	47	48	49	50