

## Tickets & Season-Ticket Packages

Tickets are available at the door, payable with cash, check, or credit card: \$30 general, \$25 senior (age 60+). You can also visit [www.early-music.org](http://www.early-music.org) for season-ticket packages, single concert tickets, or donations. Season-ticket packages can also be purchased using the order form on this brochure, payable by cash, check, or credit card. Discounted tickets for students with ID are available for purchase at the concert door for \$5.

## Special Services for Season-Ticket Holders

**Bring a Guest:** Each season-ticket holder will receive one free ticket for ONE guest at ONE concert of choice, *An Early Christmas* excluded. However, you must contact us at least 5 days in advance of the concert to reserve a seat for your friend guest. Call 512-377-6961 and leave a message or send an email to [boxoffice@early-music.org](mailto:boxoffice@early-music.org).

**VIP-Seating Add-On:** For an optional \$60 more, season-ticket holders can choose to pay extra for the VIP Preferred-Seating Package for the full season.

## About the Founder & Artistic Director, Daniel Johnson



Since its creation by founder and Artistic Director, Daniel Johnson, Texas Early Music Project has delighted central Texas audiences with intriguing, evocative, and innovative concerts. Johnson specializes in the music of Medieval and Renaissance Spain and France, the Sephardim, the early Baroque works of Monteverdi and Charpentier, and ballads from 17th- and 18th-century Scotland. He directs the Texas Toot Early Music Workshop and is a co-director of the Amherst Early Music Festival. He was inducted into the Austin Arts Hall of Fame in the spring of 2009.

## gathering again

February 23, 2020.

That was the date of our final, in-person performance before the “long intermission.” That was the last time we were able to gather—performers, audience, and crew—all in the same space. Since then, we have had many hours (~180) of recording, one or two people at a time, in an effort to keep each other as safe as possible. Those mini gatherings were joyful celebrations, providing a fleeting but necessary sense of normalcy. When we are next able to fully assemble our company again with you, our audience, it will have been more than 19 months since the last time! Gathering again will help us all regain a feeling of rediscovery of a missing treasure, our friends, and our TEMP community. In a way, we are picking up where we left off: The music for this season was previously scheduled for the 2020-2021 season, before the pandemic radically altered those plans.

### *gaderen:*

We are reprising our 2001 concert of Medieval English works and taking it a little further, into the early Renaissance with music by Dunstable and Leonel Power.

### *recolliget:*

Our annual Christmas concert explores many cultures and languages from Europe

### *ag bailiú arís:*

Scottish ballads have been in TEMP’s repertoire since the mid-90s. It’s time for some more!

### *arrekojermos de nuevo:*

Our most recent *Convivencia* concert was in 2015. Join us for our concert of dances, prayers, love songs, and more. Relive the feeling of diversity and coexistence within the Iberian Peninsula.

*Whether delayed by fate or by fortune, we hope you will join us for a joyful gathering again.*

TEXAS EARLY  
MUSIC PROJECT

13915 Burnet Road, Suite 402  
Austin, TX 78728

Texas Early Music Project: *Preserving the Past. Enriching the Present. Engaging the Future.*



NATIONAL  
ENDOWMENT  
OF THE ARTS

Austin Community  
FOUNDATION



Cultural Arts  
CITY OF AUSTIN  
ECONOMIC  
DEVELOPMENT

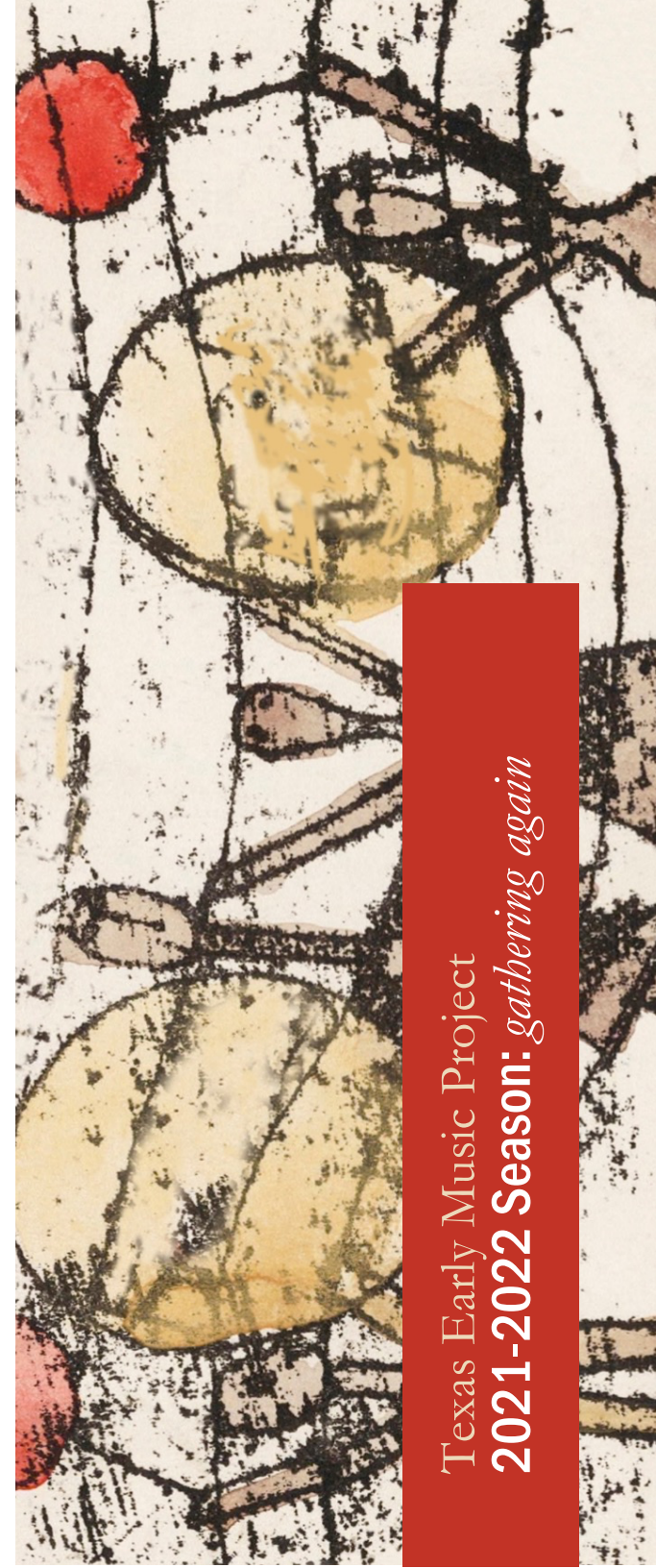


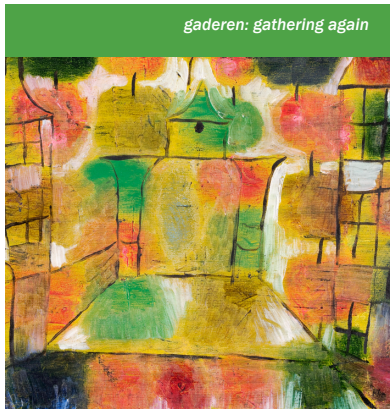
Artful Galleries  
ARTFULGALLERIES.COM



This project is supported in part by the Cultural Arts Division of the City of Austin Economic Development Department.  
This project is supported in part by an award from the National Endowment for the Arts.

Texas Early Music Project  
2021-2022 Season: *gathering again*



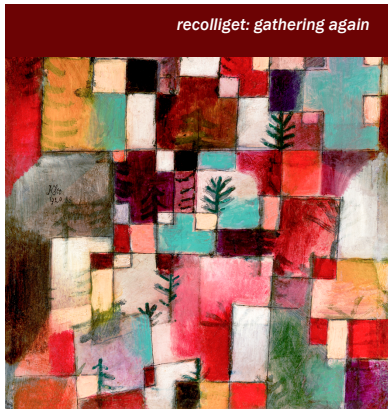


# 1 Mirie it is! *Medieval English Music*

**Saturday, October 2, 2021  
at 7:30 PM**  
Redeemer Presbyterian Church,  
2111 Alexander Ave.

**Sunday, October 3, 2021  
at 3:00 PM**  
Redeemer Presbyterian Church,  
2111 Alexander Ave.

Our first concert of the season explores music from England in the early 13th century up to about 1450, including the earliest surviving sacred and secular music from *really olde* England through the end of the early Renaissance. *Special guests include TEMP founding member Chris LeCluyse!*



# 2 An Early Christmas

**Saturday, December 11, 2021  
at 7:30 PM**  
Redeemer Presbyterian Church,  
2111 Alexander Ave.

**Sunday, December 12, 2021  
at 3:00 PM**  
TBD

We explore the intangible essence of Christmas as TEMP puts its unique stamp on beautiful and joyful carols, motets, dances, and traditional songs with innovative arrangements for solo voices, small chorus, harp, violin, flute, mandolin, viols, and lutes.

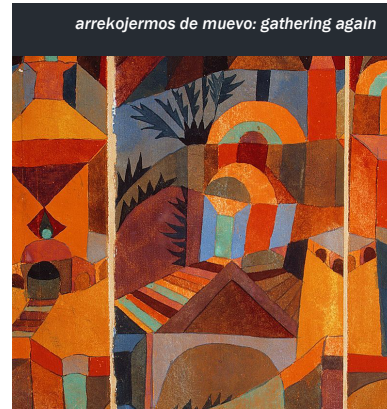


# 3 Celtic Crossings

**Saturday, February 12, 2022  
at 7:30 PM**  
Redeemer Presbyterian Church,  
2111 Alexander Ave.

**Sunday, February 13, 2022  
at 3:00 PM**  
Redeemer Presbyterian Church,  
2111 Alexander Ave.

TEMP presents evocative, heartfelt, and humorous Scottish ballads, Irish dances, and more for Valentine's weekend! This 16<sup>th</sup>- to 18<sup>th</sup>-century repertoire from Ireland and Scotland—a musical link to another time and place—is still vibrantly alive and flourishing.



# 4 Convivencia: *The Three Worlds of Renaissance Spain*

**Saturday, May 14, 2022  
at 7:30 PM**  
Temple Beth Shalom,  
7300 Hart Lane

**Sunday, May 15, 2022  
at 3:00 PM**  
Redeemer Presbyterian Church,  
2111 Alexander Ave.

The term *Convivencia* (or *Coexistence*) refers to the time period when the three great cultures of early Spain (Muslim, Jewish, and Christian) coexisted in the Iberian Peninsula. The intermingling of the three peoples resulted in intercultural influences on all aspects of life: social, intellectual, political, and artistic.



## Become a TEMPster!

We are excited to expand our TEMPster program this season to include a valuable segment of our TEMP family: our donors! Your annual cumulative giving of \$50 or more earns your place in the TEMPster Circle, complete with TEMPster perks. Please visit [www.early-music.org/membership-2021-2022](http://www.early-music.org/membership-2021-2022) to view benefits at each level of giving. You may donate online or mail in your donation with the address provided in the panel on the right.

Images for this season are by Swiss-born German artist Paul Klee (1879-1940). In the public domain, this small sample of his work represents a special gathering of its own: the joys and mysteries of expressionism, cubism, and surrealism in one. For more Klee info, please visit [www.early-music.org/2021-22-image-credits](http://www.early-music.org/2021-22-image-credits)

## Order Season/VIP-Seating Packages

Ticket holders must choose their preferred dates of attendance at the time of purchase.

**Season-Ticket Packages are for 4 concerts.**

Regular Ticket Package: \_\_\_\_\_ X \$108 = \$ \_\_\_\_\_  
Senior (60+) Ticket Package: \_\_\_\_\_ X \$ 90 = \$ \_\_\_\_\_  
Optional VIP-Seating Package: \_\_\_\_\_ X \$ 60 = \$ \_\_\_\_\_

**Ticket Package Total:** \$ \_\_\_\_\_

*If you arrive after the published start time, VIP seating may not be available.*

**Circle the appropriate dates to indicate your reservation.**

<b>MIRIE IT IS!</b>	Saturday, October 2, 2021, 7:30 PM Sunday, October 3, 2021, 3:00 PM
<b>AN EARLY CHRISTMAS</b>	Saturday, December 11, 2021, 7:30 PM Sunday, December 12, 2021, 3:00 PM
<b>CELTIC CROSSINGS</b>	Saturday, February 12, 2022, 7:30 PM Sunday, February 13, 2022, 3:00 PM
<b>CONVIVENCIA</b>	Saturday, May 14, 2022, 7:30 PM Sunday, May 15, 2022, 3:00 PM

### Ticket Package & Donation Form

Purchase season-ticket packages with a credit card at [www.early-music.org](http://www.early-music.org) or mail this panel with your information to:

**Texas Early Music Project**  
13915 Burnet Road, Suite 402  
Austin, TX 78728 (512) 377-6961

Make checks payable to: **Texas Early Music Project** or **TEMP**. Please include your mailing address below.

### Ticket Holder/Donor Information

Name: \_\_\_\_\_  
Address: \_\_\_\_\_  
City/State/Zip: \_\_\_\_\_  
Phone: \_\_\_\_\_  
Email: \_\_\_\_\_

**Make a Donation** (Donations are tax deductible.)

**Donation Total:**  
\$ \_\_\_\_\_  
 I wish my donation to remain anonymous.