

SEEKING SUPPORT & PARTNERSHIPS

For Collaborative Art-Science Projects

Making | Teaching | Facilitating

Hannah Perrine Mode



WHAT I'M SEEKING



I am seeking...

- **COLLABORATION** for glacial fieldwork and art-science co-production
- **FUNDING** to support equipment, materials, travel, and research
- **PARTNERSHIPS** for educational programming and public outreach
- **OPPORTUNITIES** for exhibitions and teaching positions

WHO I AM

Hi, I'm Hannah!

I'm an artist, educator, and designer. I work at the confluence of art and environmental science to create permeable borders and open exchange between these fields. I collaborate with kindred minds to expand the ways we learn and communicate about Earth science, to make space for more intersectional and inclusive approaches.



MY VISION



I develop project that:

- **VISUALIZE** connections between humans and Earth systems
- **ESTABLISH** intersectional approaches to climate justice
- **EXPLORE** empathy, storytelling, stewardship, and memory-keeping
- **FOSTER** cross-disciplinary exchange between art and environmental science

WHAT I DO

As an educator, I:

- **CREATE** unique educational experiences for people to approach the natural world with a creative and scientific lens
- **CONNECT** people to glaciers, geologic processes, and environmental systems
- **FACILITATE** co-production and collaboration between artists and scientists
- **INTEGRATE** art methods as valid ways of research, experimentation, and storytelling into broader scientific field
- **DEVELOP** more inclusive approaches to Earth science education by valuing different kinds of knowledge production and learning styles



WHAT I DO



As an artist, I:

- **RECORD** geologic forces, the passage of time, glacial melt, and human interaction with the environment
- **TRANSLATE** the immensity and complexity of climate systems to an intimate, approachable scale
- **COMBINE** human perspectives with glacial processes to promote a deeper understanding of the impacts of climate change
- **CONFRONT** masculine ideals and extractive histories of western geoscience, fieldwork, and landscape photography with creative practices rooted in empathy and exchange

WHAT I MAKE

I make installations, sculptures, photographs, and paintings using site-specific materials and methods.

I write love letters to glaciers, create installations of melting ice, tie knots out of raw clay, trace my body along fault lines, and imagine new constellation shapes.

Whether performed socially or in solitude, each gesture is an exercise in generosity, hope, and (sometimes) futility; an attempt to reimagine the flow of the future.



PROJECT | SOFT MONUMENTS



SOFT MONUMENTS

2019-ongoing | cyanotype on fabric

SOFT MONUMENTS

large-scale sewn fabric collages

In the field, I create **cyanotype*** prints of glaciers, and the landscapes they form. Back in my studio, I collage and sew these fabric prints into flag-like tapestries that memorialize human connections to glacial ice. Each piece ranging in scale, *Soft Monuments* can be displayed in an immersive installation and paired with educational events, inviting audiences to contemplate the past, present, and future of glaciers.

*see glossary



PROJECT | SOFT MONUMENTS



IN THE FIELD | GULKANA GLACIER, AK

PROJECT | SOFT MONUMENTS



ON VIEW | CENTRAL MICHIGAN UNIVERSITY

PROJECT | SOFT MONUMENTS



PAST PROJECT SUPPORT

- **Juneau Icefield Research Program**
 - Summer 2017, 2018, 2019
- **Vermont Studio Center**
 - Artist Residency, 2019
- **Central Michigan University**
 - Artist residency, 2020
- **McCarthy Artist Residency**
 - With Erratics, 2021

CURRENTLY SEEKING

- Fieldwork partnerships & funding to expand the project to more glaciers
- Support for dedicated time to work on this project, including research into related topics
- Exhibition and public outreach opportunities

PROJECT | ICE FIELDS



ICE FIELDS

2017-ongoing | cyanotype on paper | each 4x5in



ICE FIELDS

field photography

Year after year, I have visited the Juneau Icefield to document changes to the glacial environment. Using a large-format camera, glacial meltwater, and a **cyanotype*** printmaking process, I create long-exposure photographs of glaciers that explore and record glacial **albedo*** by capturing entire days of light. To date, I have created approximately 30 prints in this series which can be exhibited as a whole or as individual artworks.

*see glossary

PROJECT | ICE FIELDS



IN THE FIELD | LEMON CREEK GLACIER

PROJECT | ICE FIELDS



ON VIEW | ANCHORAGE MUSEUM, AK



PAST PROJECT SUPPORT

- **Juneau Icefield Research Program**
 - Summer 2017, 2018, 2019
- **Anchorage Museum**
 - *Extra Tough: Women of the North*, 2020–2021

CURRENTLY SEEKING

- Fieldwork partnerships & funding to expand the project to more glaciers
- Funding to acquire an 8x10 camera to create larger prints
- Funding & expertise to build a portable, extra-large format camera to scale image size
- Exhibition and public outreach opportunities

PROJECT | ICE CORE SCULPTURES



ICE CORE SCULPTURES

2017-ongoing | glacier meltwater, rope, vessels, found materials

ICE CORE* SCULPTURES

time-based installation and performance

Through scientific fieldwork and collaboration, I collect water samples, glacial silt, or moraine till and combine these elements with pigments to refreeze into cylindrical sculptures. Each sculpture has cordage frozen into its center which, during exhibition, is connected to a larger dynamic rope system. With multiple pieces of ice attached to the same rope, the installation shifts based on the rate of each ice core's* melt. Dripping sounds are amplified throughout the space and the ice melt collects in/on ceramic, glass, or paper vessels below.

*see glossary



PROJECT | ICE CORE SCULPTURES



ON VIEW | OOBLECK PROJECTS & THE EAST CUT, SAN FRANCISCO, CA

PROJECT | ICE CORE SCULPTURES



PERFORMANCE | MILLS COLLEGE ART MUSEUM, OAKLAND, CA

PROJECT | ICE CORE SCULPTURES



PAST PROJECT SUPPORT

- **Juneau Icefield Research Program, AK**
 - Summer 2017, 2018, 2019
- **Oobleck Projects, San Francisco, CA**
 - *Earth/Body*, 2017
- **The East Cut, San Francisco, CA**
 - *Tiny Atlas Climate Benefit*, 2017
- **Mills College Art Museum, Oakland, CA**
 - *Figure Eight: MFA Thesis Show*, 2018

CURRENTLY SEEKING

- Fieldwork partnerships & funding to collect more water samples from glaciers
- Funding to acquire an industrial freezer to create larger-scale sculptures
- Exhibition and public outreach opportunities



PROJECT | COLLECTIVE MEMORY

COLLECTIVE MEMORY

2016–ongoing | glacier meltwater, rope, vessels, found materials

COLLECTIVE MEMORY

site specific installation

In each iteration of the project, I work in community to collect stories of local environmental and social change. Simultaneously, I source nearby water samples to mix with watercolor pigment and freeze into large pieces of ice. Presented in public, the ice melts onto paper, creating unique patterns with the colored pigments. The resulting paintings are displayed with a related community memory, then redistributed to the public via free postcards.

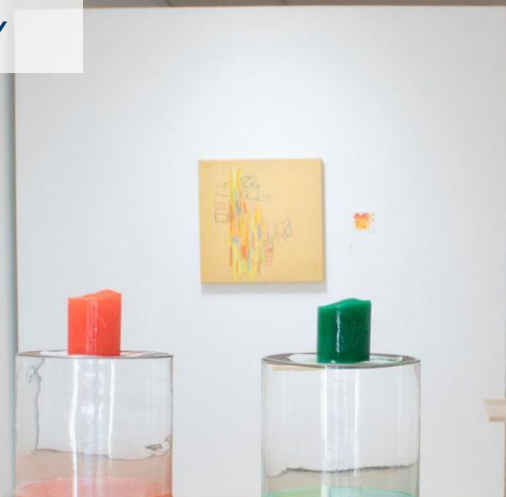


PROJECT | COLLECTIVE MEMORY



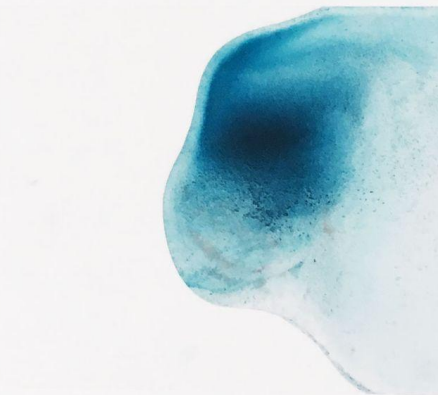
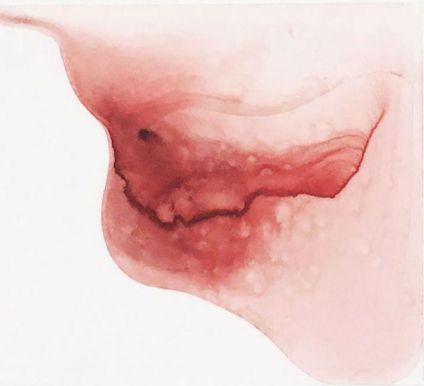
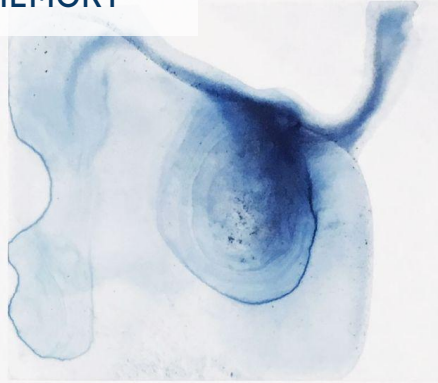
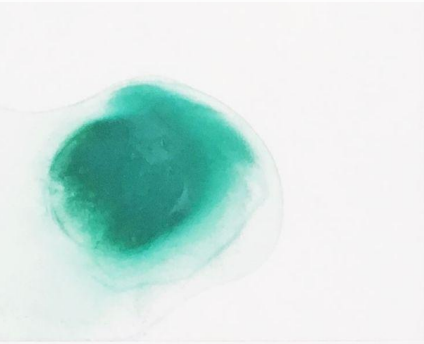
ON VIEW | INTERNATIONAL ARCTIC SCIENCE COMMITTEE, ICELAND

PROJECT | COLLECTIVE MEMORY



ON VIEW | NIAD ART CENTER, RICHMOND, CA

PROJECT | COLLECTIVE MEMORY



PAST PROJECT SUPPORT

- **Mills College, Oakland, CA**
 - Public project & installation, 2017
- **International Arctic Science Committee & University of Akureyri, Iceland**
 - Public project & installation, 2018
- **NIAD Art Center, Richmond, CA**
 - Public project & installation, 2019

CURRENTLY SEEKING

- Institutional partnerships and funding for new versions of this project
- Exhibition and public outreach opportunities

PROJECT | ERRATICS



ERRATICS

2019-ongoing | research collective

ERRATICS

Hannah Perrine Mode, Nina Elder, Tyler Rai

Research collective

Erratics is a collaborative art collective that explores geologic and human intimacy, centering personal responses to climate change. Together we:

- **CREATE** opportunities for other artists generate new insights and reach diverse audiences
- **CONDUCT** interdisciplinary research
- **AMPLIFY** art-science co-production strategies
- **FACILITATE, CURATE, and PRODUCE** dialogues, events, publications, podcasts, and exhibitions



PROJECT | ERRATICS



IN THE FIELD | KENNICOTT GLACIER, AK

PROJECT | ERRATICS



IN THE FIELD | ROOT GLACIER, AK



PAST PROJECT SUPPORT

- **Anchorage Museum, AK**
 - Podcast series, Spring 2021
- **Santa Fe Art Institute, NM**
 - Artist residency, 2023
- **Eckelberry Foundation, Rockland, ME**
 - Artist residency, 2022
- **GHOST: Thwaites Glacier Collaboration**
 - Collaborative project proposal, 2022-3
- **516 Arts, NM**
 - Exhibition, 2024

CURRENTLY SEEKING

- Support and partnerships for a traveling museum exhibition
- Funding and support for research and artist residency opportunities
- Funding for publications and exhibitions

GLOSSARY

ALBEDO

The proportion of light reflected by the surrounding snow and ice. As glaciers melt, their ice reflects less sunlight and more of the sun's radiation is absorbed by the darker rocks and surrounding environment – a positive feedback loop that increases glacial melt and retreat.

ICE CORE SCIENCE

Glaciers hold information about the history of our planet, and scientists can learn these stories by analyzing ice core samples from different depths of glaciers. Analyzing them chronologically, scientists can interpret how past climate patterns inform the present and future of our planet.

CYANOTYPE

A light-sensitive 2-part chemical solution that turns a deep blue when exposed to UV light, cyanotype was first used by botanist Anna Atkins in 1843 to create photographic prints of algae.

CO-PRODUCTION

A framework in which direct connection and collaboration between researchers and practitioners guides transdisciplinary knowledge production and informs decision-making.



WHY IT MATTERS

Creative practices provide unique pathways into planetary science as methods for:

- Inclusive **ACCESS** to STEAM educational programs
- Collaborative **RESEARCH** methods Earth systems and glaciology
- Frameworks to **SYNTHESIZE** complex data and abstract information
- Effective ways to **COMMUNICATE** scientific research to wider audiences
- **IMAGINE** innovative new solutions for the climate crisis





WHY IT MATTERS

“...Alternative representations [of glaciers] from the visual and literary arts do more than simply offer cross-disciplinary perspectives on the cryosphere.

Instead, they reveal entirely different approaches, interactions, relationships, perceptions, values, emotions, knowledges, and ways of knowing and interacting with dynamic environments.

They decenter the natural sciences, disrupt masculinity, deconstruct embedded power structures, depart from homogenous and masculinist narratives about glaciers, and empower and incorporate different ways of seeing, interacting, and representing glaciers...”

(Carey, et al, *Glaciers, gender, and science*, *Progress in Human Geography*, 2016.)

CV HIGHLIGHTS

EDUCATION

MFA Visual Art, Mills College, 2018
BS Studio Art, Skidmore College, 2011

SELECT TEACHING EXPERIENCE

Juneau Icefield Research Program, Alaska
Academic Council Member, 2020–present
Art Faculty, 2018–present
JEDI Committee Co-Founder & Member, 2020–22

Inspiring Girls* Expeditions, Alaska & New Zealand
Girls* on Ice Alaska, Art Instructor, 2022–present
Girls* on Ice New Zealand, Art Instructor, 2024

Bishop O’Dowd High School, Oakland, CA
Visiting Artist, 2022

Chulengo Expeditions, Chile & Alaska
Art Faculty, 2022
Visiting Artist, 2019

Central Michigan University, Michigan
Barstow Artist in Residence, 2020
Visiting Art Faculty, 2021

PUBLIC ART

Google HQ, Mountain View, CA
Bishop O’Dowd High School, Oakland, CA

SELECT RECENT EXHIBITIONS

Sarasota Art Museum, FL, 2023
Huntsville Museum of Art, AL, 2023
Society of the Four Arts, Palm Springs, FL, 2022
Bedford Gallery, Walnut Creek, CA, 2021
The Social and Public Art Resource Center, Venice, CA, 2021
Anchorage Museum, AK, 2021
Central Michigan University, Mount Pleasant, MI, 2020
NIAD Art Center, Richmond, CA, 2019
Blueprint Projects, Waltham, MA, 2019
Stanford University, Palo Alto, CA, 2018
Mills College, Oakland, CA, 2018
SOMArts, San Francisco, CA, 2017

SELECT RECENT ARTIST RESIDENCIES

Santa Fe Art Institute (with Erratics), NM, 2023
Directangle Press, Bethlehem, ME, 2022
Eckelberry Foundation (with Erratics), Rockland, ME, 2022
Central Michigan University, Mount Pleasant, MI, 2020
Vermont Studio Center, Johnson, VT, 2019
Google, Mountain View, CA, 2019
The Chilkoot Trail, Alaska + Canada, 2019
The International Arctic Science Committee, Iceland, 2018
Alaska State Parks, 2018



CONTACT & MORE INFO



Let's chat!

Email: hannahpmode@gmail.com

More info:

Website: www.hannahpmode.com

Instagram: [@hannahpmode](https://www.instagram.com/hannahpmode)

Erratics: www.erraticproject.com

I am based in Providence, RI, spend my summers in Alaska. I love to travel for projects, especially if there are glaciers involved! :)