

19TH & SHEPHERD

PHASE II

Houston Heights



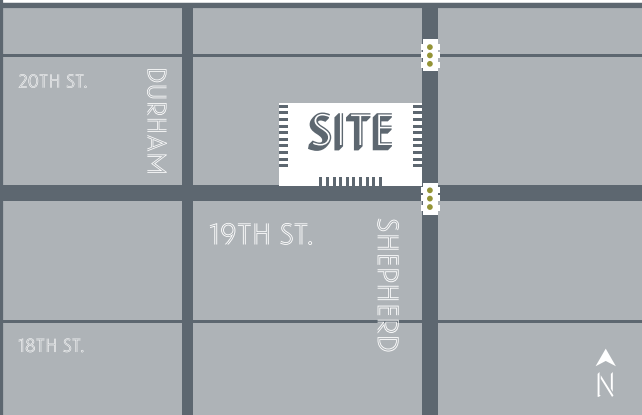
LOCATION :	SIZE :	THE HIGHEST TRAFFICKED INTERSECTION IN HOUSTON HEIGHTS FRONT DOOR TO THE 19TH STREET HISTORIC SHOPPING DISTRICT AMONGST LARGEST CLUSTER OF RETAIL IN THE HOUSTON HEIGHTS SHORT DRIVE TIME TO GARDEN OAKS UNIQUE ARCHITECTURE IN THE HEART OF THE HEIGHTS
721 W. 19TH ST.	4,295 SF. BUILDING 13,100 SF. LAND	
NORTH WEST CORNER OF 19TH & SHEPHERD	TRAFFIC COUNTS:	
	35,000 CARS A DAY	
AREA TRAFFIC GENERATORS :		



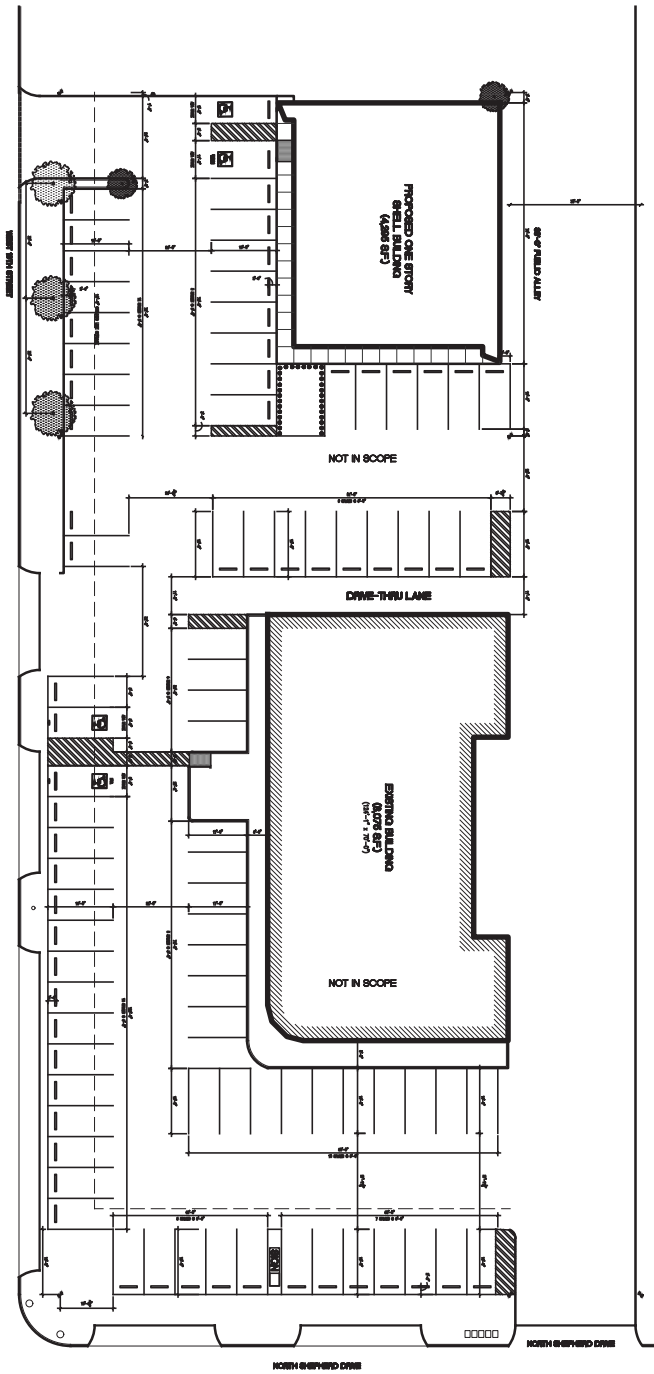
CONTACT **BRYAN DANNA** : PRINCIPAL

C : 832.455.4343 | O : 713.357.5800

REVIVECO.COM | BRYAN@REVIVECO.COM



THIS IS WHAT A WIN-WIN LOOKS LIKE.



PROPOSED SITE PLAN
SCALE: 1/8" = 1'-0"

SITE A: 30 PARKING SPOTS
5 ADA ACCESSIBLE
SITE B: 54 PARKING SPOTS
5 ADA ACCESSIBLE
TOTAL: 87 PARKING SPOTS



<p>A10</p>	<p>WEST 10TH FIREAL CENTER 721 W 10TH STREET HOUSTON TX 77008</p>	<p>OMNEROS DESIGN STUDIO, ARCHITECTS LLC 2500 Summer St, Suite 1220 Houston, Texas 77007 (713) 715-250-7716 (713) 715-250-2884</p>
	<p>NOT FOR CONSTRUCTION FOR ARCHITECTURAL CONSULTANTS</p>	<p>OMNEROS DESIGN STUDIO, ARCHITECTS LLC Copyright 2013 Design and construction are trademarks of services are not and shall remain the property of the architect. The architect, its agents, its employees, its consultants and its subcontractors shall not be responsible for construction, construction management, or construction administration. The architect, its agents, its employees, its consultants and its subcontractors shall not be responsible for construction, construction management, or construction administration.</p>

