

The Woman's Club of Palo Alto

June 2010 Newsletter

CALENDAR OF UPCOMING EVENTS

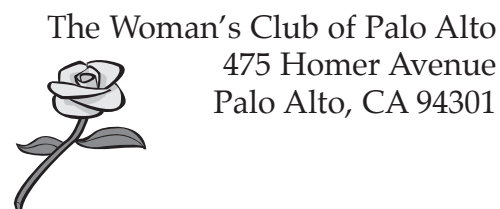
Wednesday, June 2 - Board Meeting 5:00 pm at the Club House

Tuesday, June 8 - Drop In Social 5:00-7:00 pm at the Club House
Hosted by Celiene O'Hara 367-8122. .

Thursday, June 10 - Cine'Circle and the Reel Buffs at 7:00 pm at the Club House
This month's movie is TBA. Check your email for more details.
Hosted by Melaine Bales and Jeanne Aufmuth. Call Melaine at 650-326-0776 for more information.

Wednesday, June 16 - Luncheon at 11:30 am at the Club House
Lisa Hendrickson, CEO, Avenidas, Senior Services
HOSTED BY KATHIE MCGINN & JOANNE PINSKY

Tuesday, June 22 - Book Group at 7:30 pm at the Club House
Call Jeanne McDonnell 321 5260



The Woman's Club of Palo Alto
475 Homer Avenue
Palo Alto, CA 94301

www.womansclubofpaloalto.org

Friendship, Self-Improvement, and Community Involvement

Co-Presidents: Christine Shambora, Sandra Pearson

Editor: Carol Hubenthal

Presidents' Letter

One of our goals this year was to strengthen our sense of community. For those of you who participate in one of the monthly activities – the book club, Cine Circle, the writing group, the drop-in social – you have begun to form some new relationships, to strengthen an attachment to the Woman's Club. This month many new friendships were formed by those who worked on the Kitchen Tour. Elizabeth Moder-Stern and Debbie Nichols, as co-chairs, provided inspired leadership. They had a very able committee of twelve who met frequently and did everything from selling ads for the tour pamphlet and baking delectables for the refreshment table, to getting donations for the raffle and effectively publicizing the event in our newspapers. For the 40plus of us who volunteered to be docents or ticket takers, we were proud to be a small part of a truly lovely day. Our voices might have been hoarse, our feet a bit weary, but the friendships we made and the increased awareness in the community of who we – the Woman's Club of Palo Alto – are, made the effort very worthwhile. A special thanks to all of the volunteers, as well as to those of you who supported this event by enjoying the beautiful homes and gardens.

We also have tried to clarify our roles as philanthropists and to strengthen our community involvement. The Outreach and Philanthropy Committees continue coordinating efforts to provide opportunities for club members to volunteer time and expertise to the myriad of nonprofits who benefit from our grants. We have been touched by the difference our modest grants made to our recipients as they accepted their awards at our May luncheon.

We give our deepest thanks to the outgoing Executive Board who provided insights, sensitivity,



Wednesday, June 16

Lisa Hendrickson

CEO, Avenidas, Senior Services

*Here and Away,
Including Avenidas Village,
Beacon Hill Model West*

HOSTED BY KATHIE MCGINN & JOANNE PINSKY

- | | |
|-------|--|
| 11:30 | Member and Guest Sign-in |
| 12:00 | Luncheon is Served |
| 12:15 | General Meeting, Budget Approval,
Program & Dessert |

Luncheon is offered at \$5.00 for members, \$10 for guests. Call Joanne Pinsky at 321-2516 for guest reservations.

Look Inside!

Proposed Budget, Directory Photos, Kudos Corner, In Memoriam, Philanthropy, Luncheon Notes, Book Club, History Corner

(continued on page 2)

www.womansclubofpaloalto.org



Book Group

The Dragon by Rory MacLean

Tuesday, June 22, 7:30 p.m.

At the club, we will discuss *Under the Dragon* by Rory MacLean, the last book in our Asia series. New members welcome.

Jeanne McDonnell

KUDOS CORNER

Anne Ercolani – recognition at the District Convention as Outstanding VP!

Jean Dawes and Liz Lillard-Bernal, as co-chairs of philanthropy, and organizing an inspiring program.

Joann Meredith, Julie Jerome, and Barb Spreng for their vision and perseverance to create the 2010-11 Directory .

COMMUNITY RECOGNITION

The Woman's Club received a Preservation Award from the Palo Alto Stanford Heritage(PAST) and the Palo Alto Historical Association for the "remodeling of the Woman's Club restrooms created to fit the Craftsman interior of the clubhouse." The event was chaired by President, Grace Hinton. Accepting the award on our behalf was Jana Stevens, Chair of House and Grounds, along with our contractor, Mike Smith, and Sarit Sela from Cody Anderson Wasney Architectural firm. Our thanks to all of you who contributed time and money to make the restroom renovation possible.

History Corner Anna Zschokke

From the minutes of the earliest club years, Anna Zschokke's name stands out as a person of great influence in the field of social welfare, an endeavor that helped make Palo Alto a special place. During the club's first year, she headed the Philanthropy committee and was secretary of the board of directors. She helped in 1898 to found a reading room sponsored by the club, which later influenced Palo Alto to consider funding a public library.

In the early 1900s, child labor was rampant throughout the nation, and Anna Zschokke led a committee to investigate local industrial conditions as they affected women and children, as well as school attendance, which was a related concern.

Another of her very early achievements was working with other club members to originate a gymnasium with equipment and a trainer for school children. The schools then did not have a gym or a physical education program of any kind.

As another achievement that might still be needed, she prepared a report for the State Federation of Clubs on short cuts in housekeeping.

The City has recognized her for offering her home as a school so the children would not have to walk all the way to Mayfield, now the California Avenue area, and the City has also recently named a quite insignificant park in her honor, on the west side of High Street between University and Hamilton, a space with an interesting bike rack, some newly planted trees, and a cement walkway to an office building and a town parking garage.

Maybe we need a guard to see that local women of historical importance receive the honor they deserve.

Jeanne McDonnell

Presidents' Letter continued

tand creativity as we faced various challenges this past year. We are looking forward to working with the new Board, and each of you, as we continue to seek new ways to bring meaning to our membership in the Woman's Club of Palo Alto.

Sincerely,

Sandra and Christine

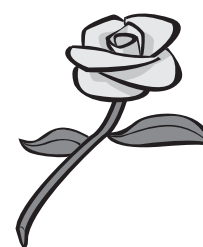
In Memoriam

Trudy Margaret Lung was a rare combination of gentility, optimism, kindness and hard work. A Woman's Club member for 30 years, she served as a Board Officer and Director, Hospitality Chair and Bridge Chair. Trudy and I kept in touch when she moved from Palo in 2000. Each letter was cheerful and newsy but never failed to mention fond memories of her "wonderful Club." Trudy's last note said "I am still saying the Collect for Club Women, that will always be with me." And, to Trudy, I say "You will always be with me."

Margaret Feuer

Carolyn Reller was a much beloved and admired philanthropist and active member of our community. In addition to her contributions to the Woman's Club, she served on the board of Avenidas, Channing House, the Children's Health Council active in the Palo Alto Garden Club. She and her husband built Palo Alto Commons to provide quality care for the elderly. As Karen Olson, her lifelong friend remarked, Carolyn "had a natural ability to make everybody feels as if they were a close friend. She was elegant and gracious, but she was also down to earth." Another longtime friend and neighbor remarked, "God picks his prettiest flowers his garden," and that would surely apply to her.

Rosemary Donahue, a long time Palo Alto resident, mother of three and avid sports fan, died May 22nd after a courageous fight with brain cancer. Rosemary was an angel in disguise, always helping others. She will be missed by her husband of fifty years, Paul, her children, grandchildren, her many friends and neighbors.



Luncheon Chairs

As Luncheon Chair, I want to express my profound gratitude to the women who have so ably and generously "chaired" the monthly committees that provide delicious lunches to all of us.

I particularly want to express my admiration and appreciation as these volunteers have not only managed menus and food purchases, organized monthly committees, and arranged food preparation, serving and cleaning up, but have also had to deal with a few committee members who do not realize that serving on a Luncheon Committee is an essential part of being a Woman's Club member; this donated labor gives not only food and camaraderie but also gives the membership itself the gift of our lovely lunches at the 1960's price of \$5.00.

May all future Luncheon Chairwomen receive the utmost in cheerful cooperation when committees are being activated to prepare the monthly luncheons.

Of course, as well, our thank you to all our monthly Luncheon Committee members whose energy, time, devotion and labor have made our monthly luncheons so very unique.

Finally then, our special "thank you" to the Luncheon Chairwomen of 2009/2010: Iris Korol, Louise Beattie, Joan Urquhart, Carol MacPherson, Carol Muller, Linda Bader, Donna Bohling, Jennifer Kleckner, Julie Jerome, Sarah French, Sue Krumbein, Lolly Osborne, Eileen Brooks, Deanna Dickman, Emily Renzel, Ellie Heister, Barbara Carlitz, Pat Starrett, Nancy Schoener, Kathie McGinn and Joanne Pinsky.

Most Gratefully,

Jan Heilman

Directory — Final Call

The last two days for portrait taking at the Clubhouse are June 8 and June 15. You can go on-line to www.womansclubofpaloalto.org and click on Membership to schedule or call Julie Jerome at 493-8645. If you cannot go on one of those days, Please call Dennis at LifeTouch (408-313-4895) and he will try to schedule you at another near by location.

Important note: if you want to be guaranteed a copy of the photo directory, be sure to have your photo taken!

2010-11 BUDGET NOTES

The Finance Committee has prepared the enclosed budget for next year. It was reviewed by the Board and is now presented to you for approval at the June General Meeting. The total budget is \$112,650.00

Joan Johnston

Finance Officer and Chair of Finance Committee

Some highlights:

INCOME:

Luncheons: Assumption that 100 members will pay \$5 for at each monthly lunch.

Membership: We are assuming a full membership of 225 members

Rentals: Assuming 2 full rentals each month. (This year's budget assumed 2.5)

Fundraising: Assuming increasing success of Kitchen tour and other donations.

EXPENSES:

Each Committee was asked to submit their estimates of expenses in the coming year. These expenses along with maintenance and other on-going expenses make up the total.

We are also budgeting a transfer of funds to both the building reserves and the operating reserves.

If you have any questions, comments, or suggestions, please email me (joanjohnston@comcast).

PROPOSED BUDGET 2010-2011

PROPOSED INCOME:

Interest	\$700.00	0.62%
Luncheons	\$5,000.00	4.44%
Membership	\$33,950.00	30.14%
Rentals and Deposits	\$60,000.00	53.26%
Fundraising and Donations	\$13,000.00	11.54%
TOTAL INCOME	\$112,650.00	

PROPOSED EXPENSES:

Ads	\$2,200.00	1.95%
Building and Garden *	\$38,970.00	34.59%
Committee Expense	\$2,750.00	2.44%
Fees/ Permits/Dues/Contingency	\$870.00	0.77%
Fundraising Expenses	\$2,500.00	2.22%
GFWC	\$5,310.00	4.71%
Insurance	\$4,000.00	3.55%
Luncheons/ Socials/ Programs	\$2,000.00	1.78%
Newsletter/ Yearbook/ Office&Postage	\$2,700.00	2.40%
Philanthropy	\$5,000.00	4.44%
Professional Accountant	\$2,000.00	1.78%
Real Estate Taxes	\$2,950.00	2.62%
Rental Refunds	\$12,000.00	10.65%
Telephone/ Internet/ Web/ Utilities	\$11,400.00	10.12%
Transfers to Reserves	\$18,000.00	15.98%
TOTAL EXPENSES	\$112,650.00	

* This category includes: Gardener, House and Grounds, House Maintenance, Household Supplies and Janitorial.

Philanthropy Presentations

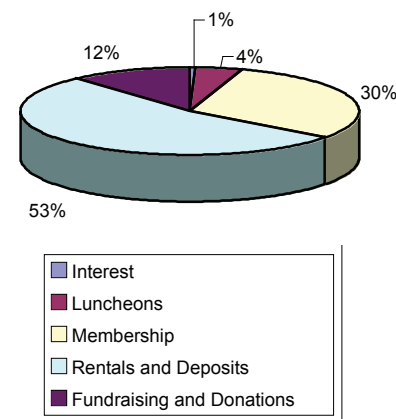
Recipients of the Woman's Club annual philanthropy awards were guests at our May luncheon. Local non-profits were suggested in the fall by members aware of their work in our community. Seventeen organizations were nominated, twelve were selected for site visits, and of those seven were chosen for awards. This year we allocated a total of \$7300 to the following groups:

- **THE ART OF YOGA PROJECT** which, through the use of yoga and mentors, supports teen girls currently in the California juvenile justice system towards accountability to self and community as they transition out of the system.
- **EASTPALO ALTO KIDS FOUNDATION** to support funds for micro-grants to teachers in East Palo Alto and East Menlo Park.
- **EASTPALO ALTO YOUTH COURT** to support funding for educational field trips and after school tutoring. The program provides a community based diversion program through which young people who have committed criminal offenses make amends for the harm done and constructively contribute to the East Palo Alto community through positive peer influence.
- **FOOTHILL COLLEGE EXTENDED OPPORTUNITY PROGRAM (EOSP)** to fund the purchase of textbooks for low-income students.
- **FOUNDATION FOR A COLLEGE EDUCATION** to support a college prep program designed to increase the number of students of color from East Palo Alto and surrounding communities who graduate with a four-year college degree.
- **PALO ALTO HOUSING CORPORATION** to pay for books and materials for a Children's Health Council Workshop that teaches Techniques for Positive Discipline to 20 Families to improve parent/child communication and to break the cycle of Punitive/physical discipline.
- **SHELTER NETWORK- HAVEN FAMILY HOUSE** to purchase instructional supplies for the Therapeutic Child Development Center. This organization serves homeless families and is the primary provider of emergency and homeless shelter and support services in San Mateo County.

Much good work is done in our community by some dedicated and inspiring people. It was a privilege to work with a great committee and represent the Woman's Club as we offer support to a few of these worthy organizations. We were moved as their representatives shared their work and their hopes for future achievements with us. We look forward to next year in the hope that we can serve with even more success. Do consider joining us!

Liz Lillard-Bernal and Jean Dawes

Source of Funds



How We Spend

