



What is CARF?

The Commission on Accreditation of Rehabilitation Facilities, or CARF, is an international independent, nonprofit accreditor of health and human services in nine service areas.

Rauch is required by state funding sources to undergo CARF's accreditation process every 3 years. Rauch's survey will take place December 14-16, 2011.

The Accreditation Process

Service providers like Rauch begin the CARF accreditation process with an internal examination of program and business practices. Then an on-site survey is conducted by a team of experts selected by CARF. During the survey, the provider must demonstrate that it conforms to a series of rigorous and internationally recognized CARF standards. Once the survey is complete, a report is



Building Blocks Comprehensive Campaign

*We are in our **final 3 days**
to raise **\$3 million by December 1!**
Less than \$2,000 remains!*

Beginning early in 2011, Rauch set out on an endeavor the agency had never before attempted. We needed the public's support to accomplish multiple goals for the organization through a **\$3 million comprehensive fundraising campaign**. This campaign was kicked off with **\$1.8 million in state and federal funds to support our housing development at Hawthorn Glen** and a **\$900,000 anonymous individual contribution**.

Throughout the year, we have met with our core supporters to advance these goals through the **\$300,000 public portion of the campaign**:

- To **build a clubhouse at Rauch's housing development at Hawthorn Glen**. This clubhouse, not eligible for state or federal funding, will become a focal point for the entire development. Clients will be able to participate in recreational and educational offerings, families will have a place to gather with their loved ones, and staff will benefit from the efficiencies associated with centralized office and training space.
- To **address infrastructure needs** across agency sites, we have sought unrestricted support for program

made and presented to the agency and its stakeholders.



Halloween at Rauch

ADA and ACCESS know how to party! Every year, the programs come together for Halloween to dress up, load up on sugar, and just have fun. The sheriff, a queen, and even Wilma Flintstone made an appearance for this exclusive event.

This year, the clients also participated in the agency pumpkin decorating contest. Some dug right in and helped clean out pumpkins and carve while others took the less messy approach and painted their pumpkin. You can see the finished pumpkin masterpieces on [Rauch's Facebook page](#).

All the pumpkins were generously donated by Book Farms in Starlight, Indiana.



development, technological improvements, and other expenses associated with maintaining efficiency and flexibility.

- To encourage individuals, businesses and foundations to become **regular philanthropic supporters** of Rauch. Your support has become more vital than ever to our agency's continued viability.

In support of the **\$300,000 public portion** of the campaign, we have been incredibly fortunate to garner the support of

- The **Ogle Foundation through a \$100,000 matching grant**, payable when the campaign reaches \$3 million total
- A **\$50,000 grant** from the **James Graham Brown Foundation**
- A **\$20,000 grant** from the **Gheens Foundation**
- A **\$5,000 grant** from **Brown-Forman Corporation**
- A tremendous number of **individuals and businesses like YOU**

We are in our **final days to raise the remaining funds to receive payment on our Ogle grant**. We must reach \$3 million in one-time gifts and 3-year pledges by **December 1**. If you have already supported our campaign, THANK YOU! If you have not, we ask that you please consider making a gift to help us reach our goal. **Less than \$2,000 remains!**

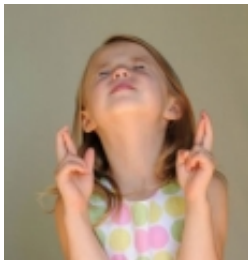
Ways to make a gift:

- [Donate now online](#) – you can make one-time, monthly, quarterly, or annually recurring gifts via our secure website!
- [Download a pledge card](#) and return it to us at: 845 Park Place, New Albany, IN 47150

For more information about the campaign, [visit our website](#) or contact Teresa Jackson, Director of Development, at tjackson@rauchinc.org or 812-945-4063.

Thank you for your past, present and future support of Rauch, Inc.!



**Wish List:**

Bottled water
 Body wash
 Deodorant
 Detergent
 TARC tickets
 Resume paper
 Office supplies
 Disposable
 dinnerware
 Wii games
 Large flat screen TV
 Admission to local:
 museums, ball
 games, movies,
 attractions
 Staff rewards:
 movie passes
 store/restaurant
 gift cards
 iPads
 Computers/netbooks
 Playground equipment
 Crayons
 Coloring books
 New toys/stuffed animals
 Diapers and wipes

Volunteers:

We're always happy to accept volunteers to:

- Read to clients
- Present to clients about music, dance, & fitness
- Professionally photograph our clients
- Organize & inventory donations

Donate Now
 Secure donations through
 Network for Good

Imagine Awards

Nominations Update

The nominations are in for the 12th annual Imagine Awards! There were many great nominees this year and our team of judges will soon be hard at work to determine the winners.

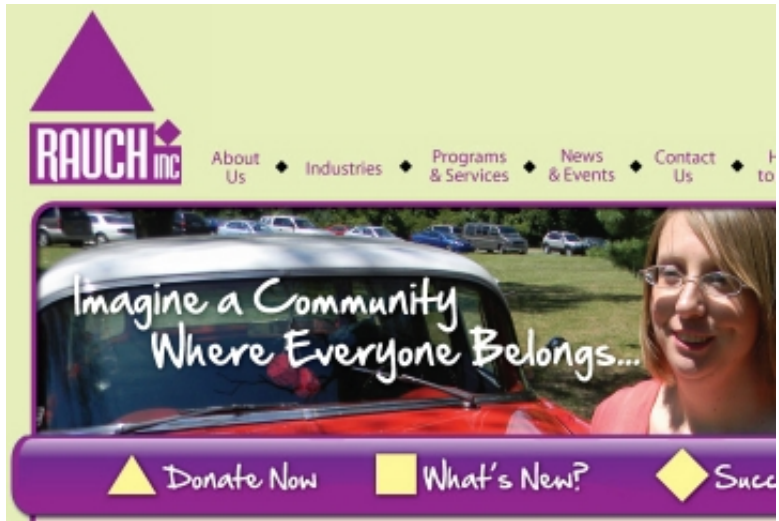
Sponsorships

The Imagine Awards Committee is hard at work planning an amazing event for 2012! They are finalizing the speaker, selecting the delicious menu, and collecting great auction items. All that's missing is YOU! Please consider joining us in making this year's event a success. Sponsorship packages are available to fit your needs and budget, ranging from \$1,000 to \$7,500. The Imagine Awards benefit the Rauch Foundation, Inc., a 501(c)3 organization, and a portion of your contribution is tax deductible. As a sponsor, you will be recognized as a partner with the Rauch Foundation in media and event materials which will be distributed throughout the region. More information on the Rauch Foundation or sponsorships, please contact Teresa Jackson at 812-945-4063 or tjackson@rauchinc.org.



The Search is On!

We have begun our search for great live and silent auction items for the approaching Imagine Awards. This year, we are placing a special focus on unique, one-of-a-kind items, and experiences. Any and all donations are greatly appreciated! If you would like to aid us in our search by donating an item or know the perfect person or business to ask, please let us know! You can contact Teresa Jackson at tjackson@rauchinc.org or Lindsey Davis at ldavis@rauchinc.org or call 812-945-4063 for more information.



Rauch's website has a new look!

We hope you enjoy a fresh view of our programs, clients and agency. Check it out at www.rauchinc.org.

845 Park Pl | New Albany, IN 47150 US

This email was sent to . To ensure that you continue receiving our emails, please add us to your address book or safe list.

[manage](#) your preferences | [opt out](#) using TrueRemove™

Got this as a forward? [Sign up](#) to receive our future emails.

Network  for Good.
EmailNow powered by Emma