

FOR LEASE



CARDINAL
COMMERCIAL PROPERTIES™



119 Rutherford Rd., Greenville, SC 29609

SQUARE FEET: 3,500 +/-

COUNTY: GREENVILLE
(Outside City Limits)

LEASE RATE: \$15.45 SF

LEASE TYPE: NNN

- 1,710 UP TO 3,500 +/- SF.
- Zoned C-2 by Greenville County.
- Multiple points of ingress/egress.
- Conveniently located less than 2 miles from downtown.
- Free-standing building.
- Space may be demised.
- Recently updated interior.

**FOR MORE INFORMATION
CONTACT:**

Robert Leland Brissie Jr., CCIM
Broker-in-Charge
864-559-8227

rob@cardinalcommercialproperties.net

Lou Brissie
Senior Associate
864-421-4447

lou@cardinalcommercialproperties.net

CardinalCommercialProperties.Net

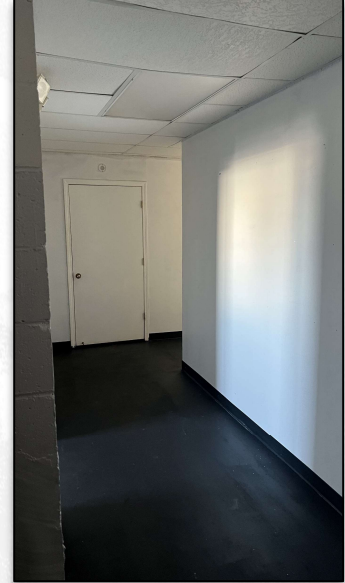
Information contained in this marketing brochure has been obtained from sources that are deemed reliable. We have no reason to doubt the accuracy contained herein but do not guarantee it. All information should be verified prior to purchase or lease. All properties are subject to change or withdrawal without prior notice.



FOR LEASE



CARDINAL
COMMERCIAL PROPERTIES™



**FOR MORE INFORMATION
CONTACT:**

Robert Leland Brissie Jr., CCIM
Broker-in-Charge
864-559-8227

rob@cardinalcommercialproperties.net

Lou Brissie
Senior Associate
864-421-4447

lou@cardinalcommercialproperties.net

CardinalCommercialProperties.Net

Information contained in this marketing brochure has been obtained from sources that are deemed reliable. We have no reason to doubt the accuracy contained herein but do not guarantee it. All information should be verified prior to purchase or lease. All properties are subject to change or withdrawal without prior notice.

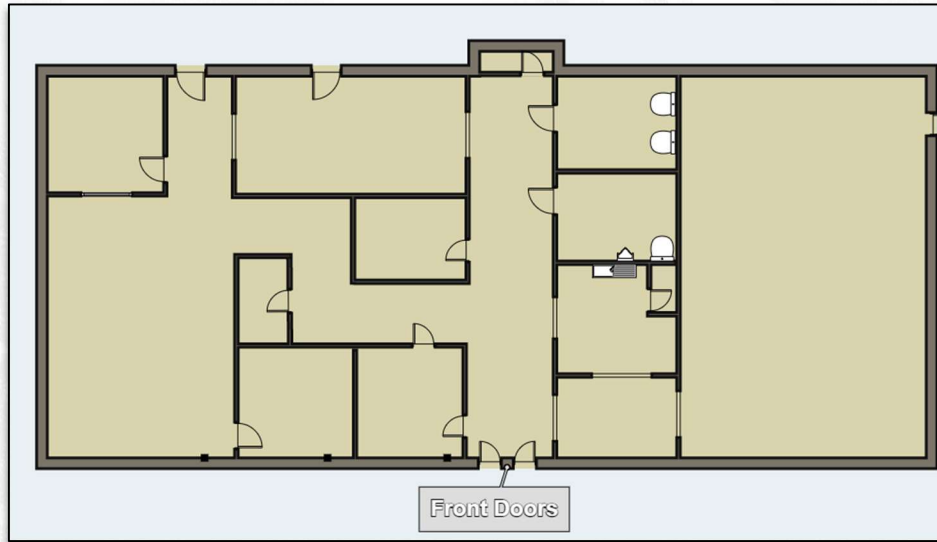


FOR LEASE

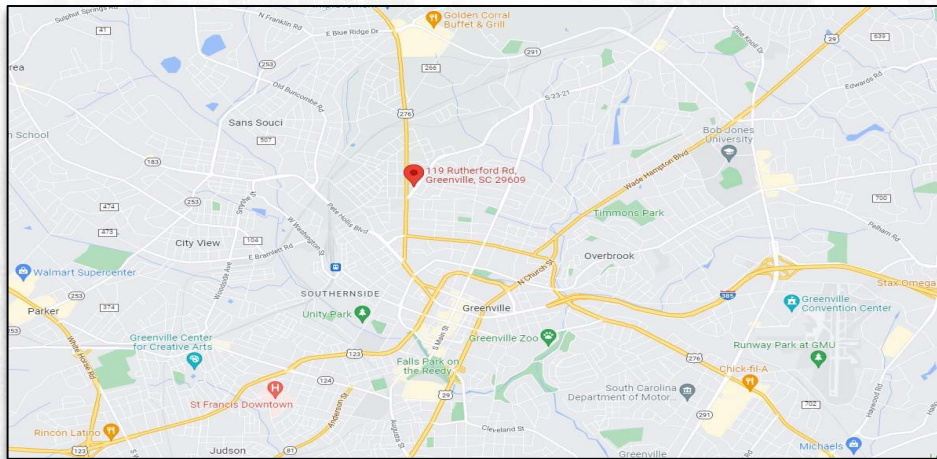


CARDINAL
COMMERCIAL PROPERTIES™

Floor Plan



Map



**FOR MORE INFORMATION
CONTACT:**

Robert Leland Brissie Jr., CCIM
Broker-in-Charge
864-559-8227

rob@cardinalcommercialproperties.net

Lou Brissie
Senior Associate
864-421-4447

lou@cardinalcommercialproperties.net

CardinalCommercialProperties.Net

Information contained in this marketing brochure has been obtained from sources that are deemed reliable. We have no reason to doubt the accuracy contained herein but do not guarantee it. All information should be verified prior to purchase or lease. All properties are subject to change or withdrawal without prior notice.

