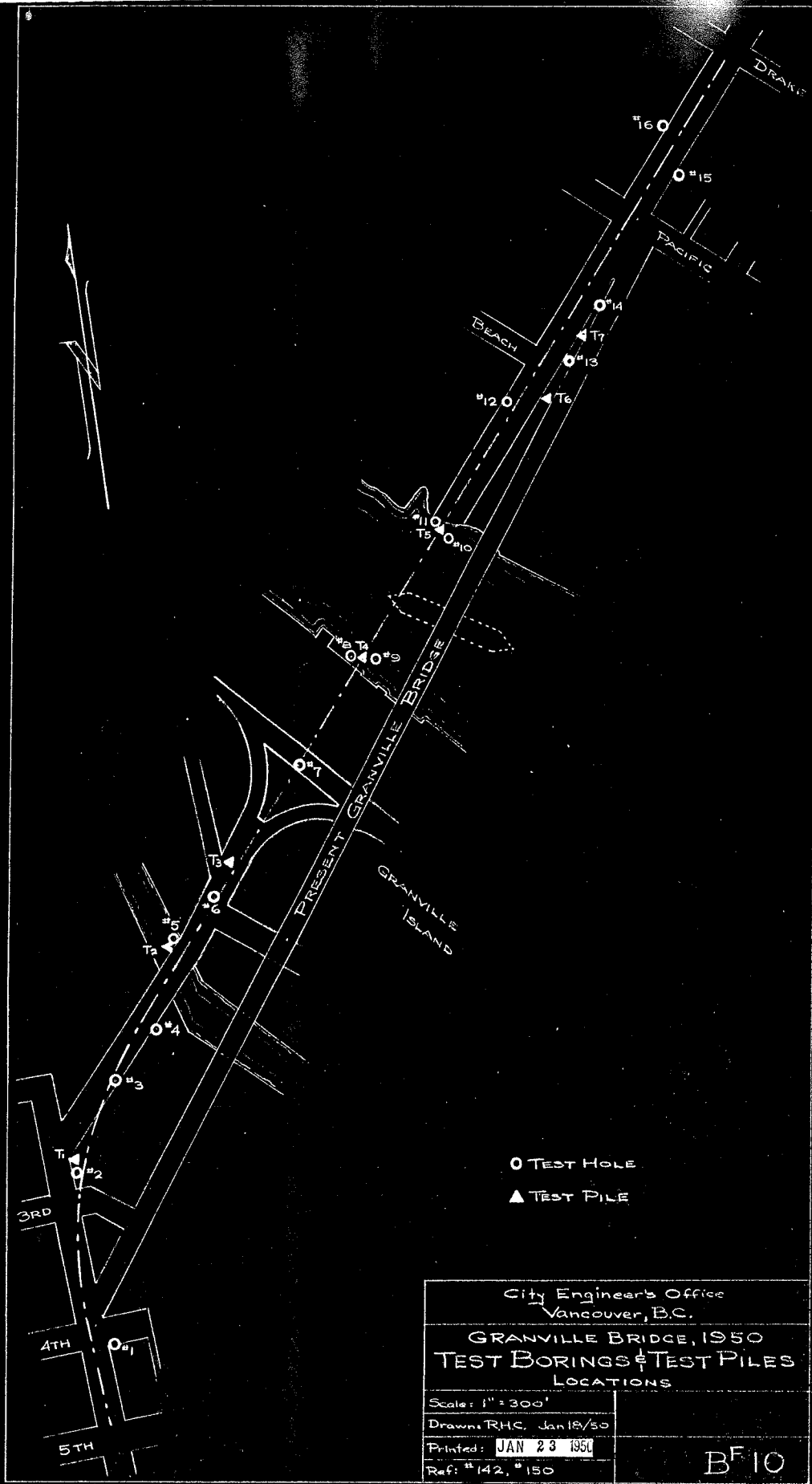


J.R. Lyall

GRANVILLE BRIDGE 1950

TEST HOLE LOGS

"THE CITY OF VANCOUVER ACCEPTS  
NO RESPONSIBILITY OR LIABILITY  
FOR THE ACCURACY OR COMPLETE-  
NESS OF THE INFORMATION SHOWN  
OR CONTAINED"



City Engineer's Office  
 Vancouver, B.C.  
 GRANVILLE BRIDGE, 1950  
 TEST BORINGS & TEST PILES  
 LOCATIONS

|                       |
|-----------------------|
| Scale: 1" = 300'      |
| Drawn: RHC, Jan 18/50 |
| Printed: JAN 23 1950  |
| Ref: #142, #150       |

B<sup>F</sup> 10

GRANVILLE BRIDGE, 1950

- TEST HOLE NO. 1 -

(RELOCATED)

Vertical Scale 1" = 10'

Drilling: Jan 9th - 10th

Hours: 24 1/2

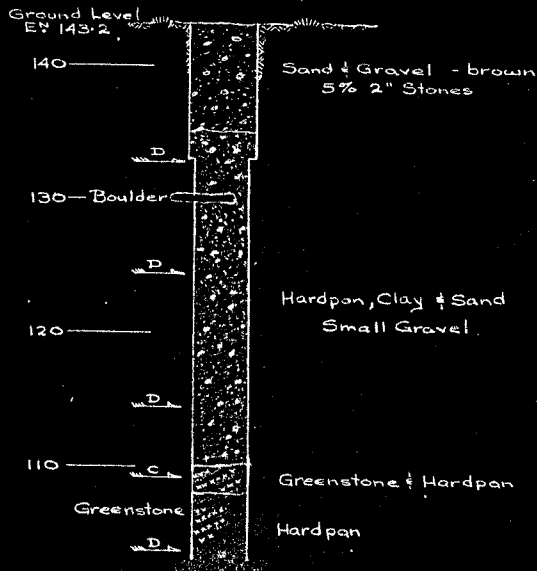
Depth: 40'-0"

Rock: not reached

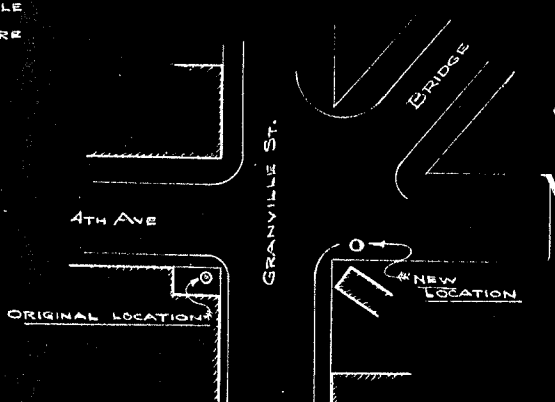
Casing: 4" φ to E# 133.2

3" φ to E# 125.2

remainder uncased



D indicates DRY SAMPLE  
 C indicates ROCK CORE



SKETCH SHOWING RELOCATION  
 1" = 100'

City Engineer's Office

Vancouver, B.C.

Jan. 11/1950

RHC

B<sup>F</sup>9-p

GRANVILLE BRIDGE, 1950

~TEST HOLE NO 2~

Vertical Scale 1"=10'

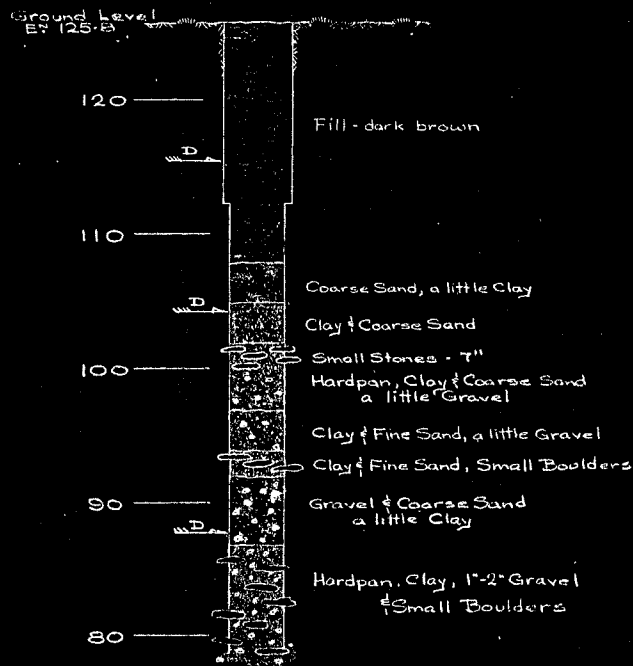
Drilling: Jan 6th - 8th

Hours: 20 1/2

Depth: 47'-0"

Rock: not reached

Casing 4"φ to E# 112-3  
remainder uncased



D  
indicates DRY SAMPLE

City Engineer's Office  
Vancouver B.C.  
Jan. 10/1950

R.H.C.

BFS-0

GRANVILLE BRIDGE, 1950

~TEST HOLE NO. 3~

Vertical Scale 1"=10'

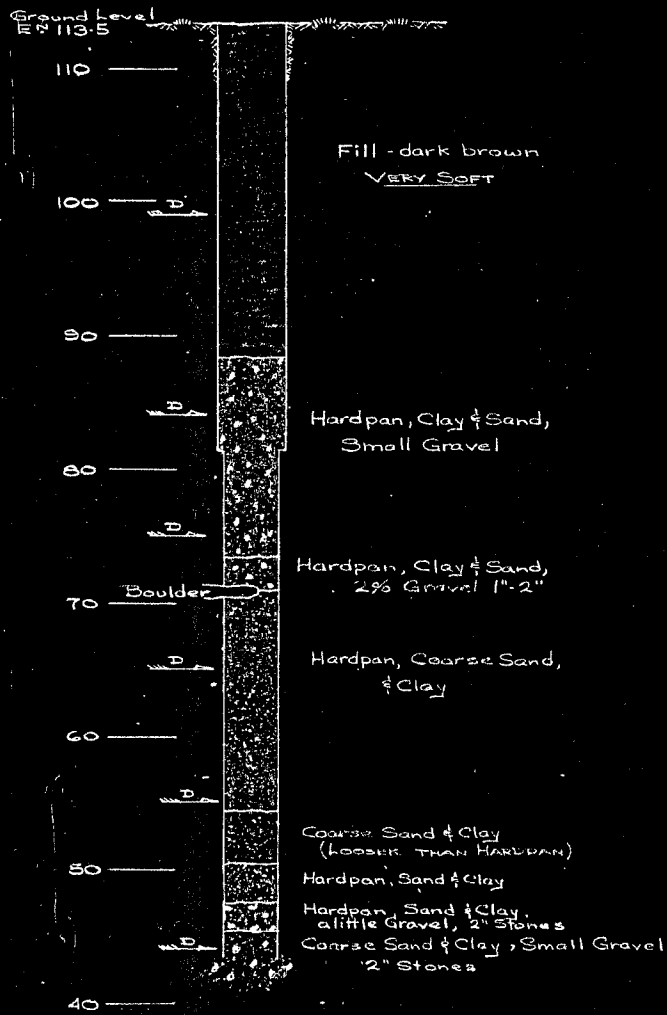
Drilling: Jan 5th - 6th

Hours: 21

Depth: 70'-0"

Rock: not reached

Casing: 4"  $\phi$  to 61.5  
remainder uncased



D denotes DRY SAMPLE

City Engineer's Office

Vancouver, B.C.

Jan. 10/1950

RHC

BFG-n

# GRANVILLE BRIDGE, 1950

## ~TEST HOLE NO. 4~

Vertical Scale 1" = 10'

Drilling: Nov. 29th - Dec 3rd

Hours: 68

Depth: 97'-6" from bed of creek

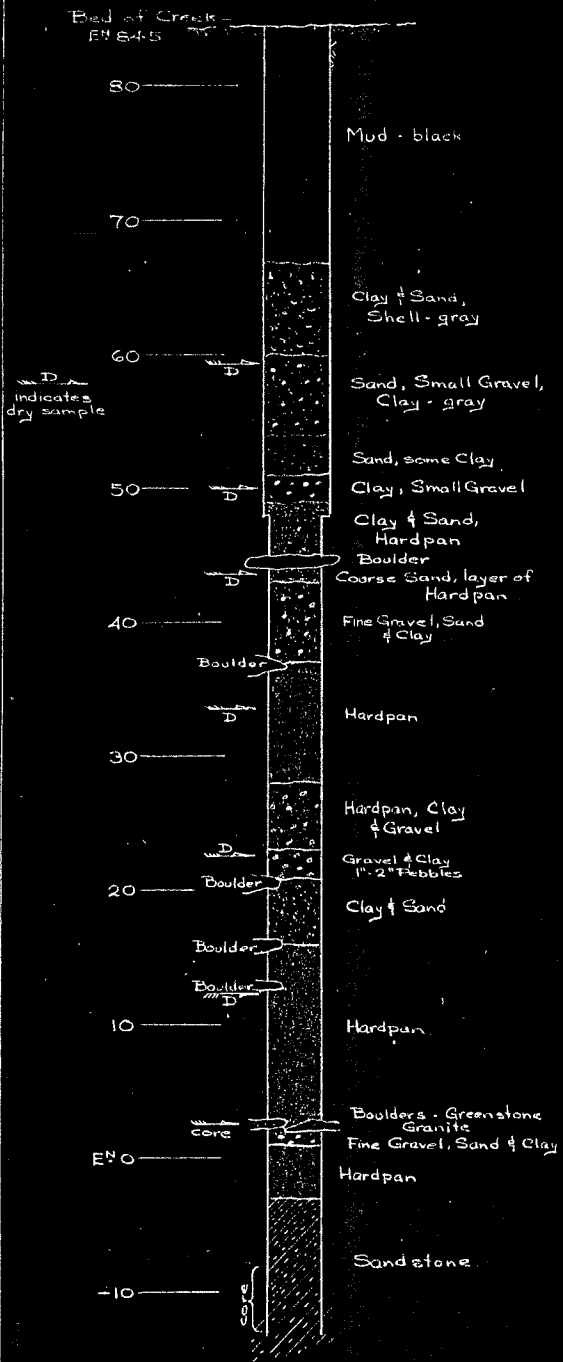
Total Depth: 115'-0" from collar at platform

Rock at Elevations: -3.0

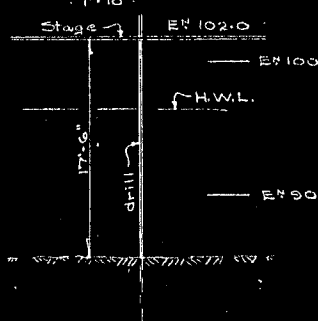
Casing: 4"  $\phi$  to EN 48.0

3"  $\phi$  to EN -2.0

remainder uncased



### SKETCH OF WORKING STAGE



City Engineer's Office

Vancouver, B.C.

Dec. 6/1949

RHC

B<sup>F</sup>9-h

# GRANVILLE BRIDGE, 1950

## - TEST HOLE NO. 5 -

Vertical Scale: 1" = 10'

Drilling: Nov. 22nd - 28th

Hours: 85

Depth: 111'-11" from bed of creek

Total Depth: 126'-6" from collar at platform

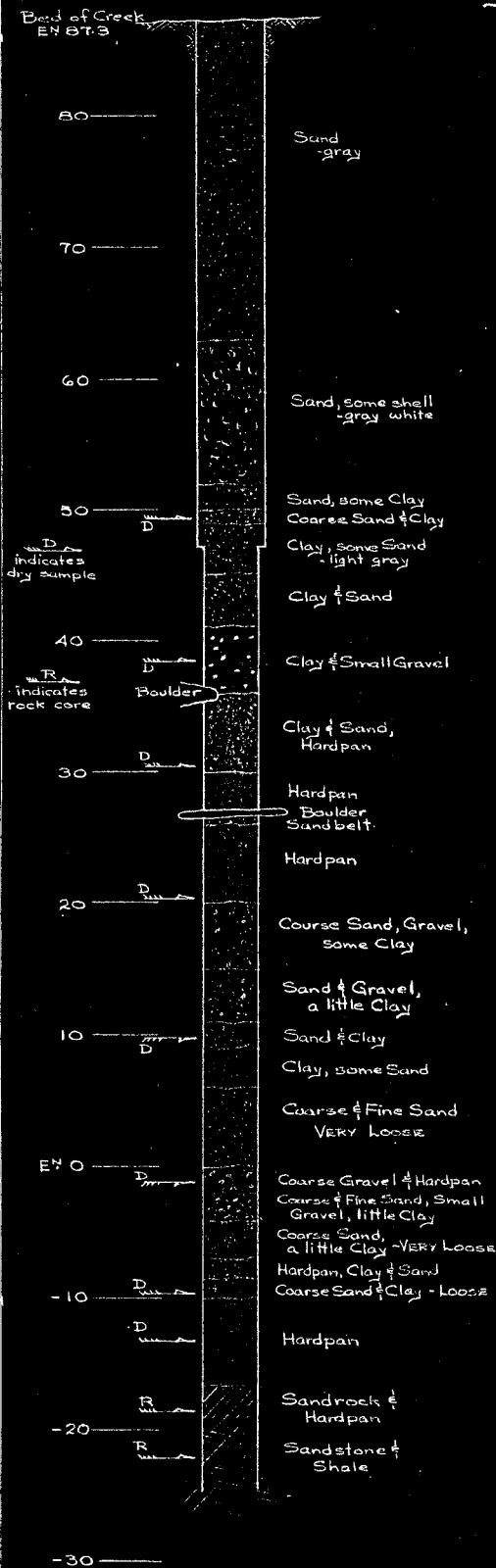
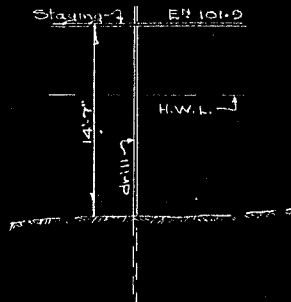
Rock at Elevation: -20.1

Casing: 4"  $\phi$  to E<sup>n</sup> 47.2

3"  $\phi$  to E<sup>n</sup> -15.8

remainder uncased

### SKETCH OF WORKING STAGE



City Engineer's Office

Vancouver, BC

Nov. 29/1949

RHC

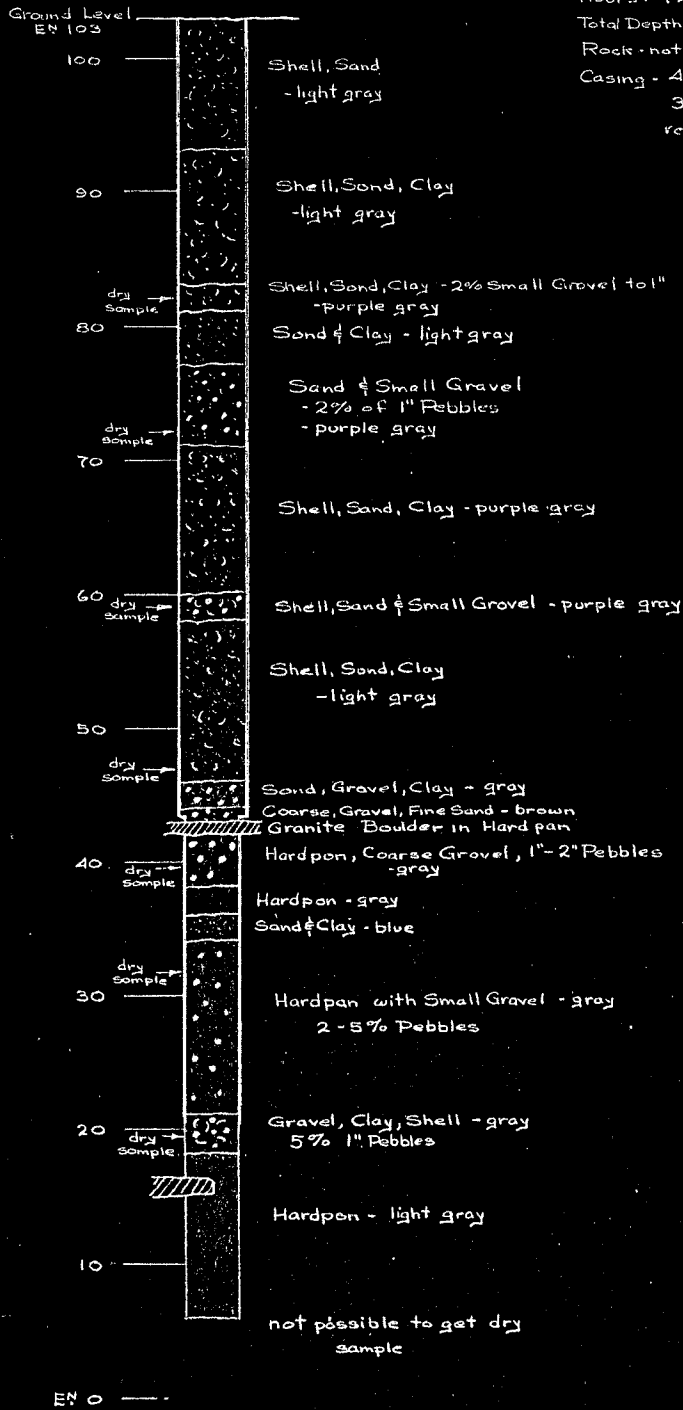
B<sup>F</sup>9-2

# GRANVILLE BRIDGE, 1950

## ~TEST HOLE NO. 6~

Vertical Scale 1" = 10'

Drilling: Oct. 12th - 17th  
 Hours: 72  
 Total Depth: 97'-0"  
 Rock - not reached  
 Casing - 4" to 59'-6"  
 3" to 82'-6"  
 remainder uncased



City Engineer's Office  
 Vancouver B.C.  
 Oct. 18/1949

RHC

B<sup>F</sup>9-b



Ground Level  
Elev 103

# GRANVILLE BRIDGE, 1950

## - TEST HOLE NO. 7 -

Vertical Scale 1" = 10'

Drilling: Oct. 3rd - 8th, 11th & 12th

Hours - 82

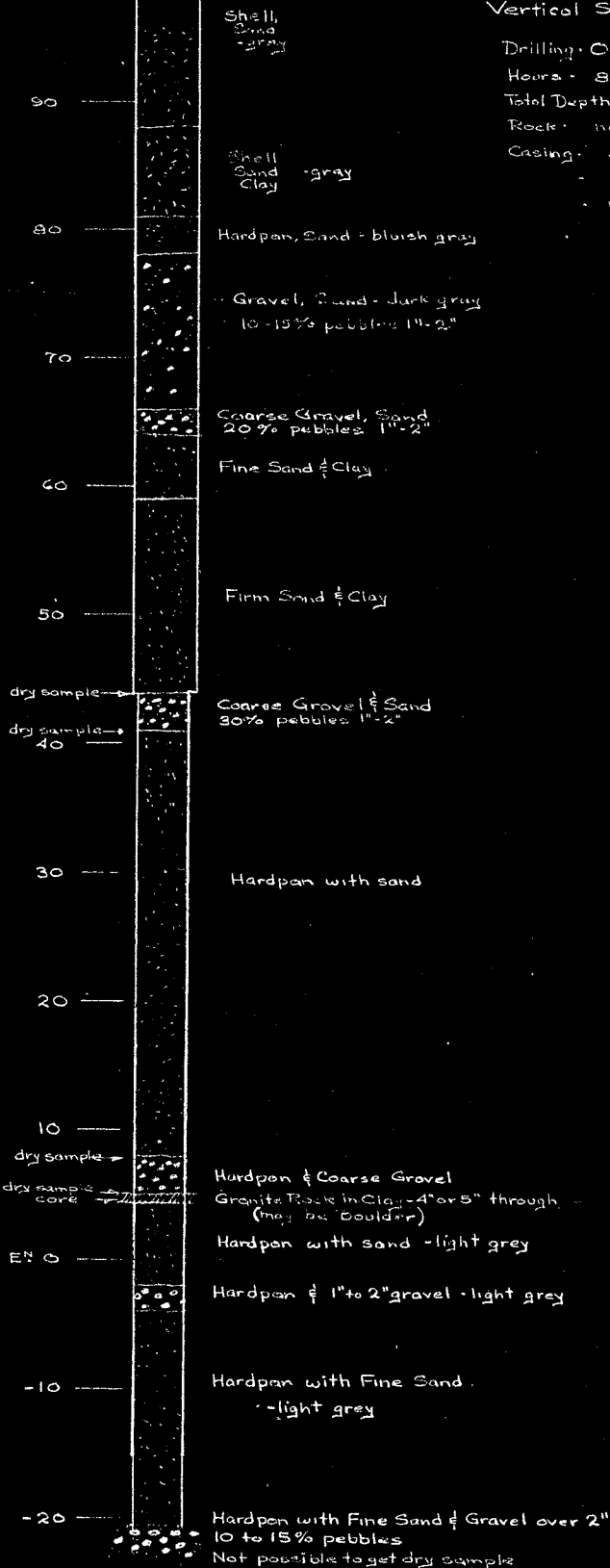
Total Depth - 123'-6"

Rock - not reached

Casing - 4" to 59'

- 3" to 118'

- remainder uncased



City Engineer's Office

Vancouver, BC

Oct. 13/49

R.H.C.

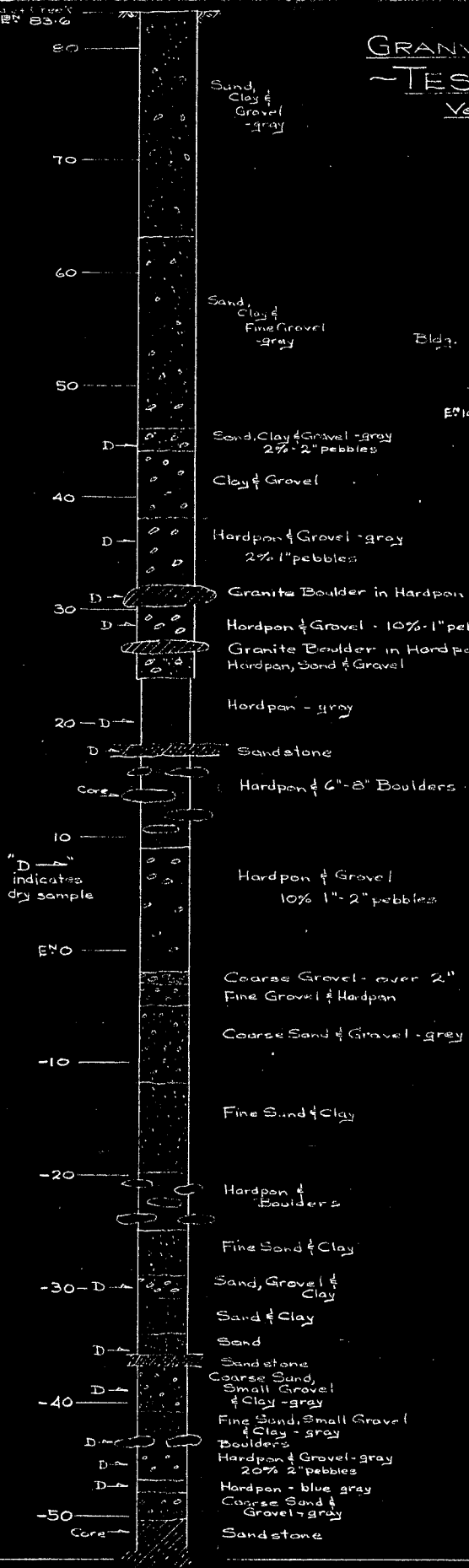
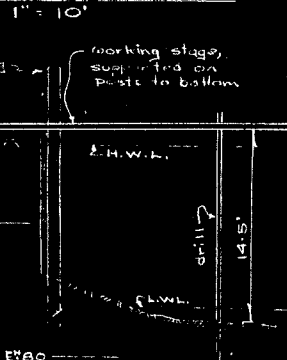
B<sup>F</sup>9-a

# GRANVILLE BRIDGE, 1950 ~ TEST HOLE NO. 8 ~

Vertical Scale: 1" = 10'

Drilling: Oct. 17th - 25th  
Hours: 14.8  
Depth: 136' 0" from Bed of Creek  
Total Depth: 150' 6" from collar at platform  
Rock at Elevation: -50.5  
Casing: 4" to EM 25.0  
3" to EM -35.8

## SKETCH OF WORKING STAGE



Sand, Clay & Gravel - gray

Sand, Clay & Fine Gravel - gray

Sand, Clay & Gravel - gray  
2% 2" pebbles

Clay & Gravel

Hardpan & Gravel - gray  
2% 1" pebbles

Granite Boulder in Hardpan

Hardpan & Gravel - 10% 1" pebbles  
Granite Boulder in Hardpan  
Hardpan, Sand & Gravel

Hardpan - gray

Sandstone

Hardpan & 6"-8" Boulders

Hardpan & Gravel  
10% 1"-2" pebbles

Coarse Gravel - over 2"  
Fine Gravel & Hardpan

Coarse Sand & Gravel - gray

Fine Sand & Clay

Hardpan & Boulders

Fine Sand & Clay

Sand, Gravel & Clay

Sand & Clay

Sand

Sandstone

Coarse Sand, Small Gravel & Clay - gray

Fine Sand, Small Gravel & Clay - gray

Boulders

Hardpan & Gravel - gray  
20% 2" pebbles

Hardpan - blue gray  
Coarse Sand & Gravel - gray

Sandstone

City Engineer's Office  
Vancouver, BC  
Oct. 28 / 1949

R.H.C. Revid, Nov. 3, Nov. 22 Bf9-c

Bed of Creek  
Elev. 76.4

# GRANVILLE BRIDGE, 1950 - TEST HOLE No. 9 -

Vertical Scale 1" = 10'

Drilling: Oct. 26<sup>th</sup> - Nov. 5<sup>th</sup>

Hours: 158

Depth: 154' 0" from bed of creek

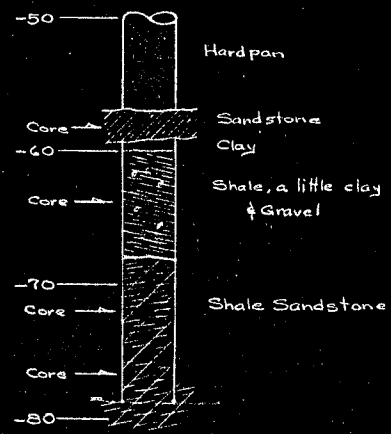
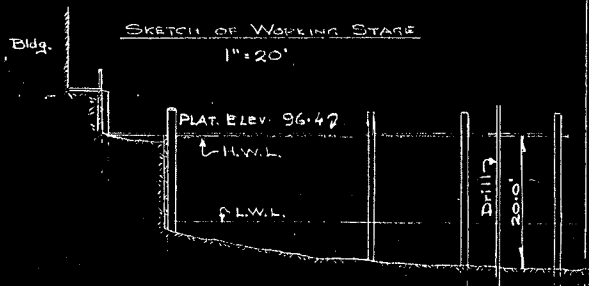
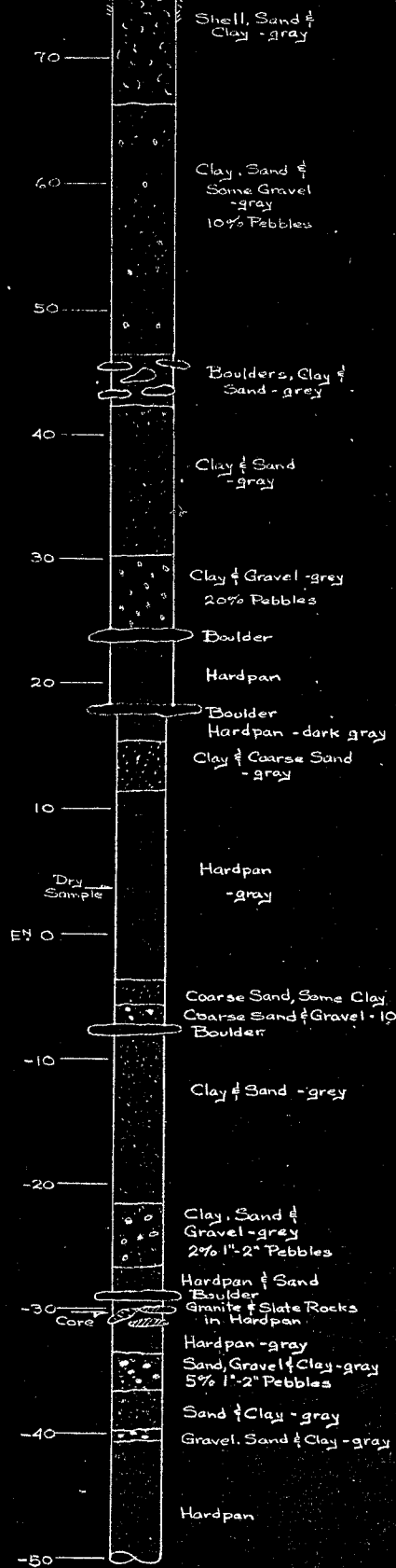
Total Depth: 174' 0" from collar at platform

Rock at Elevation: -56.6

Casing: 4" φ to E<sup>n</sup> 18.4

3" φ to E<sup>n</sup> -56.6

remainder uncased



City Engineer's Office

Vancouver, B.C.

Nov. 8, 1949

Revised Nov. 22

R.H.C.

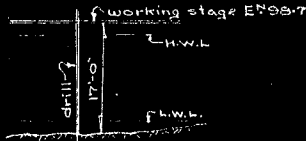
BF9-d

# GRANVILLE BRIDGE, 1950

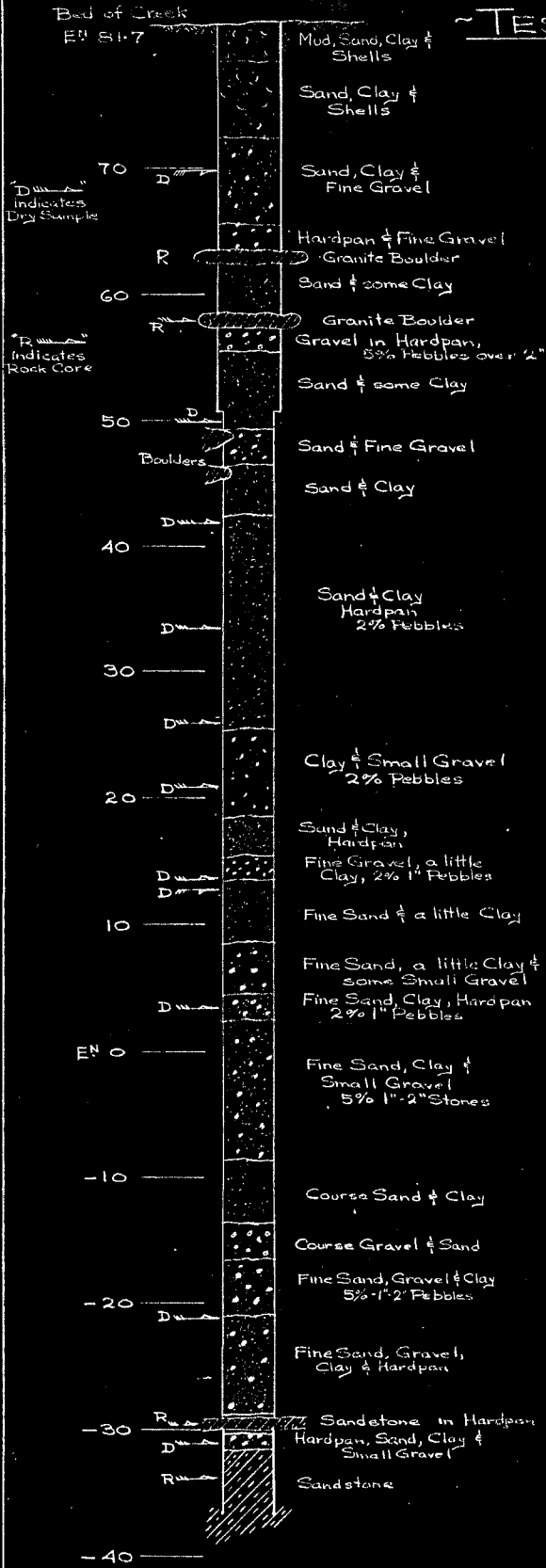
## ~ TEST HOLE NO. 10 ~

Vertical Scale 1" = 10'

Drilling: Nov. 15th - 21st  
 Hours: 10?  
 Depth: 118' from bed of creek  
 Total Depth: 135' from collar at platform  
 Rock at Elevation -31.3  
 Casing: 4" φ to EN 51.0  
 3" φ to EN -26.1



SKETCH OF WORKING STAGE  
 1" = 20'



City Engineer's Office  
 Vancouver, BC  
 Nov. 24/1949

R.H.C.

BF9-f

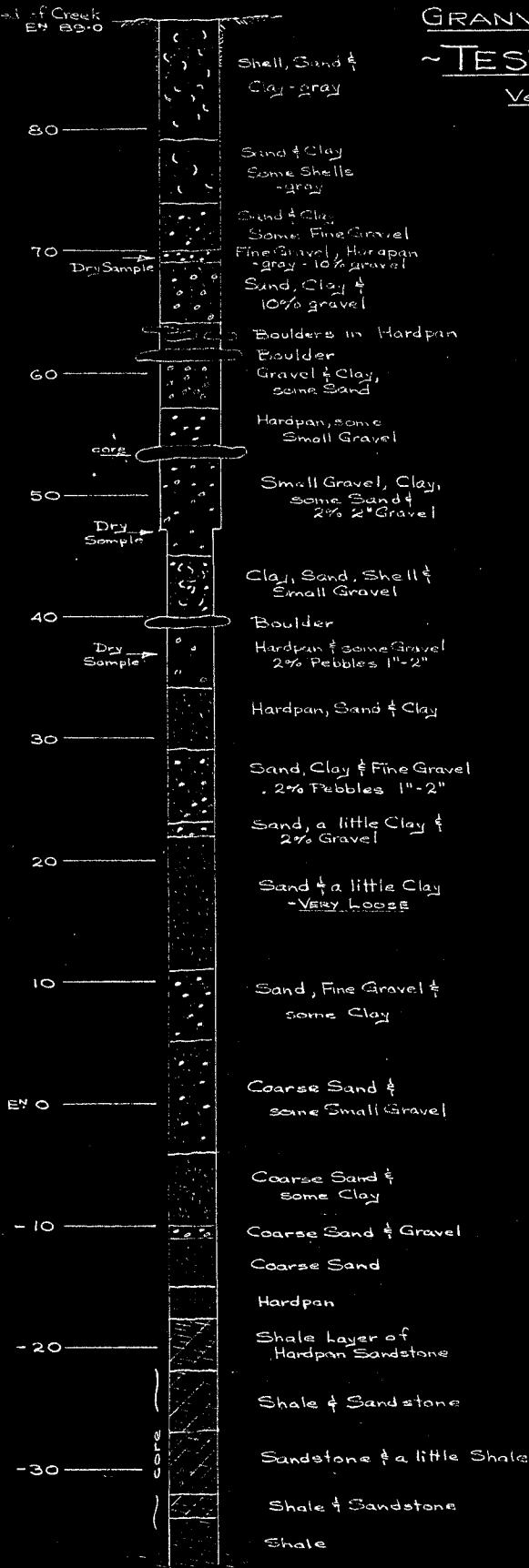
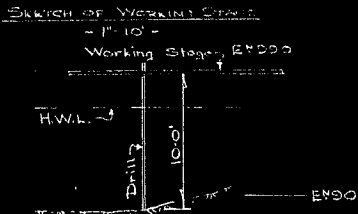
Bel. of Creek  
Elev. 83.0

# GRANVILLE BRIDGE, 1950

## ~ TEST HOLE NO. 11 ~

Vertical Scale 1" = 10'

Drilling: Nov. 7th - 14th  
 Hours: 102 1/2  
 Depth: 127'-0" from Bel. of Creek  
 Total Depth: 137'-0" from collar at platform  
 Rock at Elevation: -17.5  
 Casing: 4" φ to E<sup>n</sup> 47.25  
 3" φ to E<sup>n</sup> -18.5  
 remainder uncased



City Engineer's Office  
 Vancouver, BC  
 Nov. 16, 1949  
 RHC. Revd. Nov. 22 BFO-e

# GRANVILLE BRIDGE, 1950

## - TEST HOLE No. 12 -

Vertical Scale 1" = 10'

Drilling: Dec. 5th - 12th

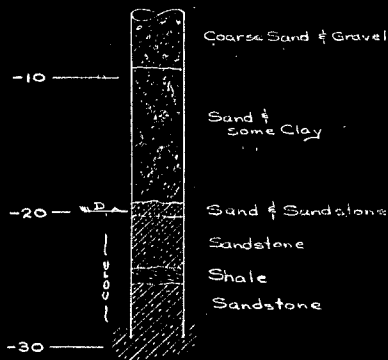
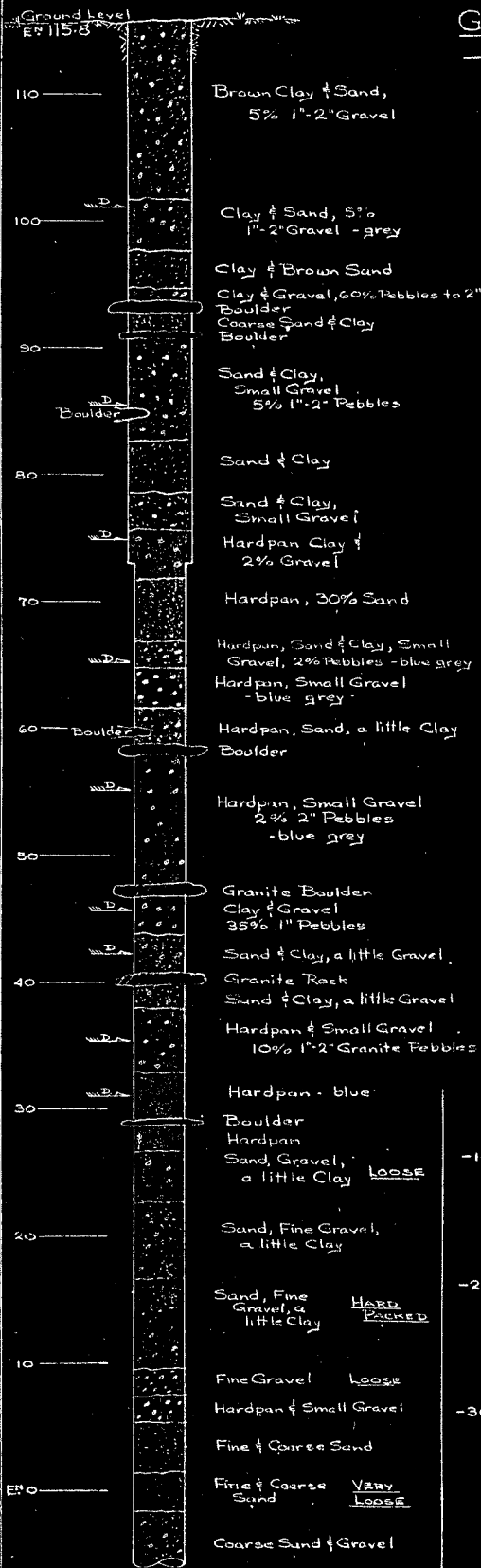
Hours: 117½

Depth: 145 ft.

Rock at Elevation: -19.2

Casing: 4" φ to E<sup>m</sup> 73.1

3" φ to E<sup>m</sup> -19.2



WD indicates dry sample

City Engineer's Office  
Vancouver, B.C.  
Dec. 14/1949

R.H.C.

B<sup>F</sup>9-i

# GRANVILLE BRIDGE, 1950

## ~ TEST HOLE NO. 13 ~

Vertical Scale 1" = 10'

Drilling: Dec 13th - 18th

Hours: 25

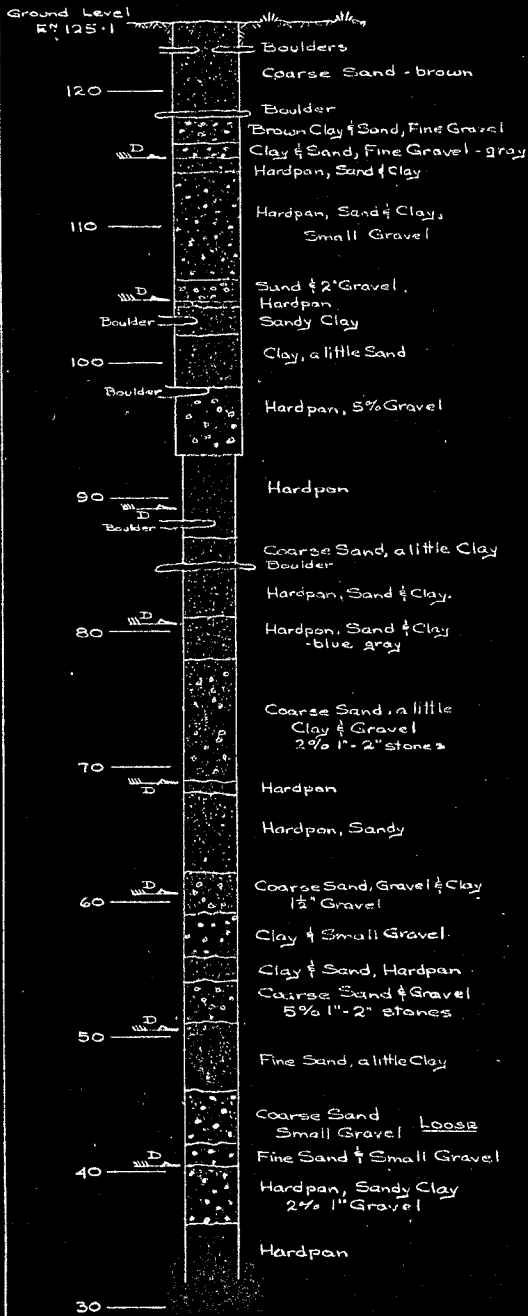
Depth: 93 ft

Rock: not reached

Casing: 4" φ to E<sup>n</sup> 93.1.

3" φ to E<sup>n</sup> 34.5

Remainder uncased.



D  
indicates  
Dry Sample

City Engineer's Office

Vancouver, BC

Dec. 20/1949

RHC.

B<sup>F</sup>9-j

# GRANVILLE BRIDGE, 1950

## TEST HOLE No. 14

Vertical Scale 1" = 10'

Drilling: Dec. 19th - 22nd

Hours: 59½

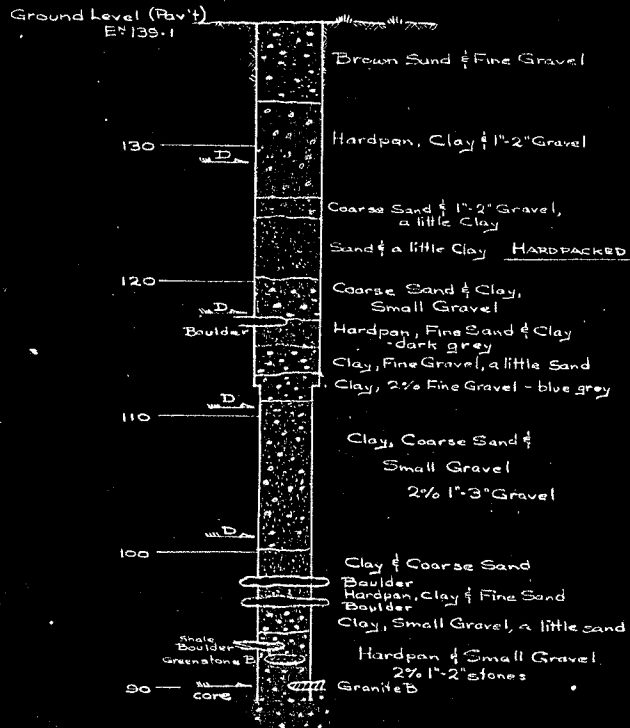
Depth: 50'

Rock: not reached

Casing: 4" φ to E# 112-3

3" φ to E# 93-B

remainder uncased



D indicates Dry Sample

City Engineer's Office

Vancouver, B.C.

Dec 29/1949

R.H.C.

B<sup>F</sup>9-k



# GRANVILLE BRIDGE, 1950

## ~TEST HOLE NO. 15~

Vertical Scale 1" = 10'

Drilling: Dec. 31st, Jan 3rd & 4th

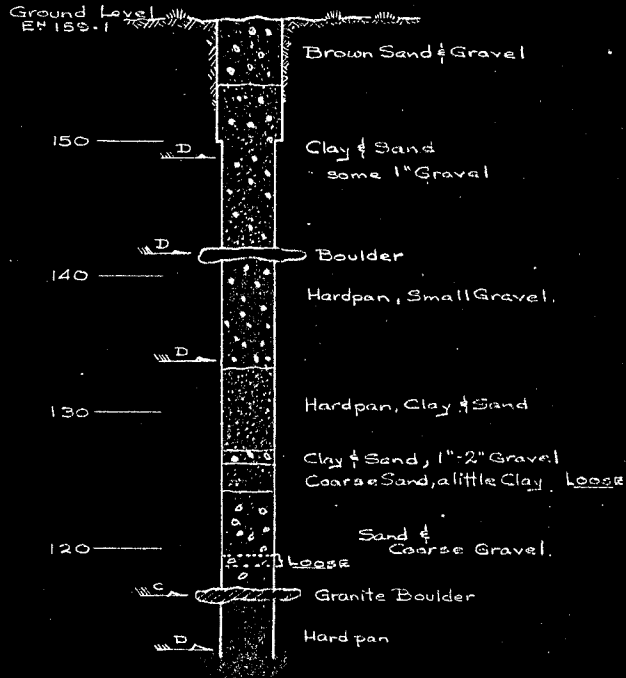
Hours: 42

Depth: 47'-0"

Rock: not reached

Casing: 4"  $\phi$  to E<sup>n</sup> 150-1

remainder uncased



D indicates DRY SAMPLE

C indicates ROCK CORE

City Engineer's Office

Vancouver B.C.

Jan. 6/1950

R.H.C.

B<sup>F</sup>9-m

# GRANVILLE BRIDGE, 1950

## ~ TEST HOLE NO. 16 ~

Vertical Scale 1" = 10'

Drilling: Dec. 28th - 30th

Hours: 51

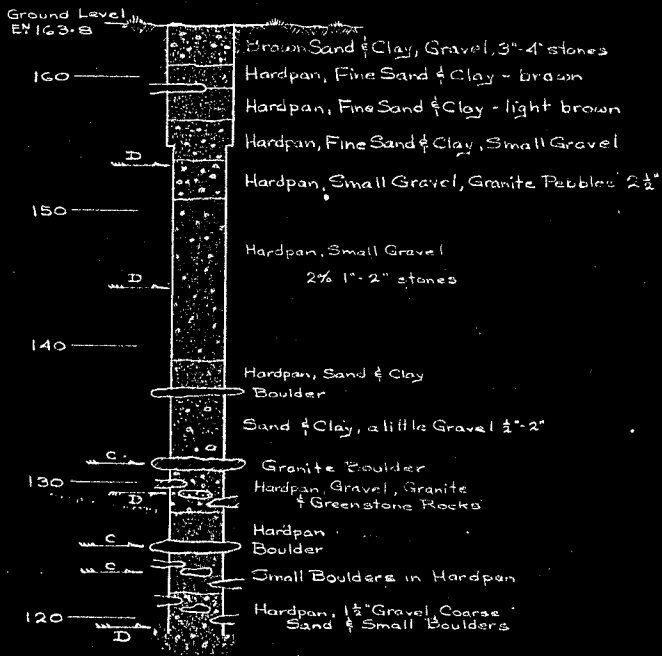
Depth: 45' 0"

Rock: not reached

Casing: 4" to E<sup>n</sup> 154.8

3" to E<sup>n</sup> 132.8

remainder uncased



Indicates Dry Sample  
 " Rock Core

City Engineer's Office

Vancouver B.C.

Jan 4/1950

RHC

BF9-1