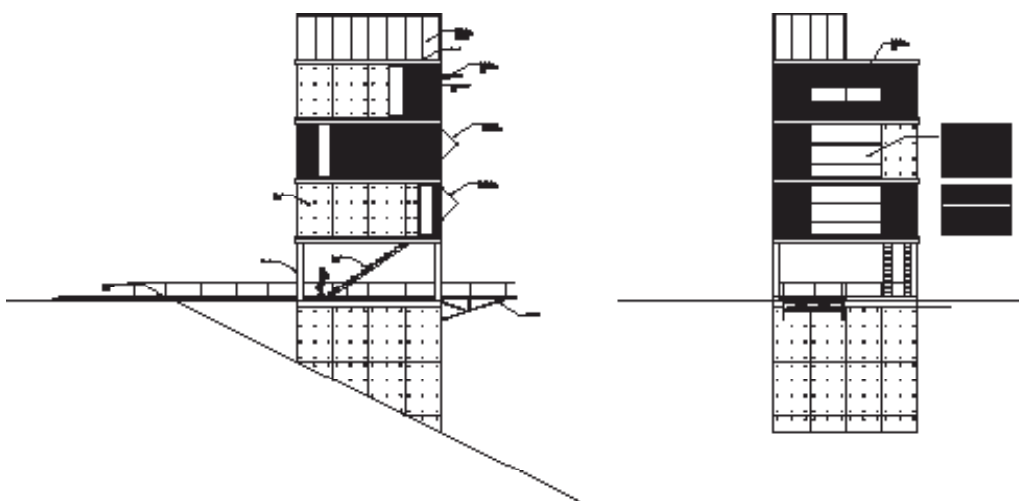


### VERTICAL HOUSE

The vertical house offers urban living on a rural site. The concept of a townhouse transposed to the country offers a unique solution to a difficult topology, and affords spectacular views. A long and dramatic bridge provides entry to a viewing platform from which one ascends a staircase into the house. The kitchen and dining areas are located on the first level, the living area is on the second level, and the master bedroom is on the third level. An open air garden is situated on the roof. The intention is that over time the house will be covered with vines descending from the roof, in effect making it into a modern ruin.

01 Sections 02 Entry bridge to viewing platform 03 Exterior view, hillside 04 Model 05 Floor plans

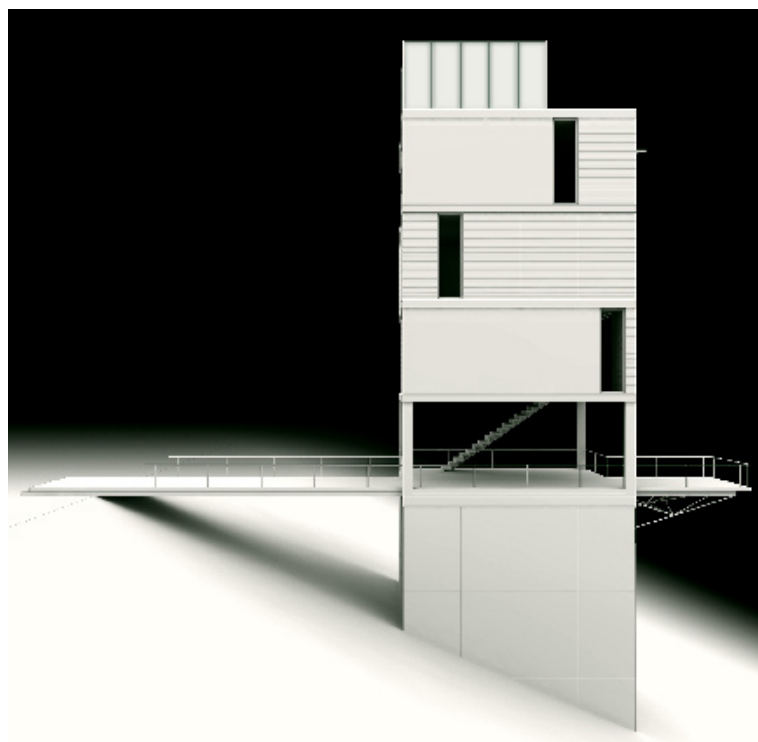
Photos: XXXXXXXXXXXXX



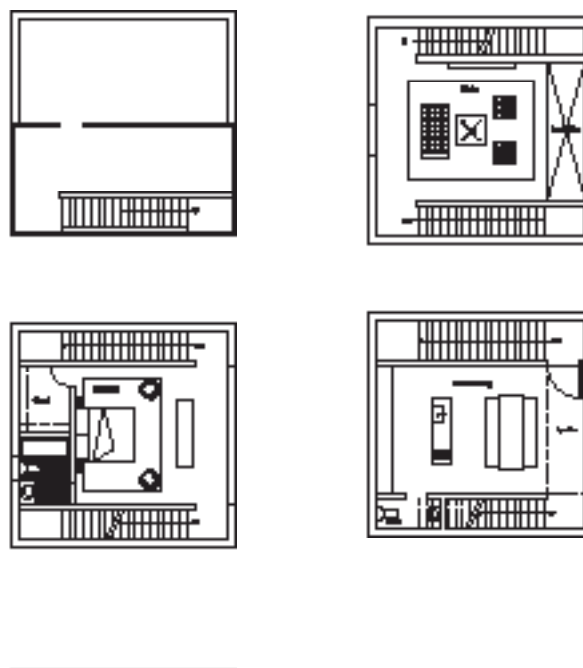
02



03



04



05