

BOND STREET



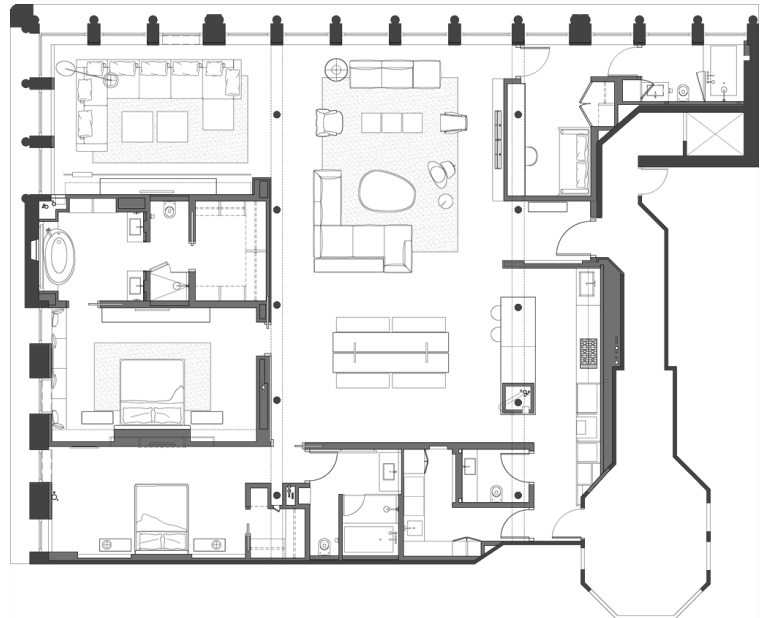


Inspired by

BOND STREET

Ovit faccust plignim odigenis dolu
ptate ped quibus, sit velles eatolutis

WORDS JULIA FREEMANTLE | PHOTOGRAPHS SIMON UPTON / The Interior Archive



The Robbins & Appleton Building is a historic building located at 1-5 Bond Street in New York.

Built in 1871, the building was used to manufacture watch cases. It was designed by architect Stephen Decatur Hatch in the Second Empire style. The building features an ornate cast iron facade and stunning blue mansard roof.

Our client (the director of a global hedge fund) bought the apartment and asked us to design a luxury minimalist backdrop with a neutral palette for his growing collection of young emerging artists including Aaron Curry, Adam McEwen, Jonas Wood, Hugh Scott Douglas Adam Pendleton, Eddie Martinez and Sam Moyer. His girlfriend, Karine Haimo is a director at the Metro Pictures, she helped him curate the collection. They found our firm and work on the Internet.

Our main design challenge was to give the voluminous apartment a nice scale, and to create a variety of seating options, for entertaining. A muted color palette was suggested by the client at an early stage in the design development process. So we selected warm greys, taupe and greige tones for much of the furniture. There are pops of color in the clean-lined contemporary

furnishings from B&B Italia, Flexform, Poltrona Frau and other companies. The design is deliberately understated so that the art becomes the primary focus. All of the furniture and objects are new, the clients brought nothing with them. Included in the scheme are a concrete feature wall and soft grey wide plank floors with hot-rolled steel detailing, the columns are the existing cast-iron columns, all lending a nice materiality to the space.

There are a lot of built-ins, including a rolling library ladder and LCD TV screens. The loft has a Crestron home automation system, and each room has iPod docks built into the walls. There is even a shoe closet. The west side of the apartment looks out over landmarked Shinbone Alley, which inspired a Broadway musical and, fittingly, a song by the Spin Doctors.

What makes the project successful - is that it's contemporary without being cold, and glamorous without being overly decorated. I always say that were only as good as our client, and for this project we had a very good one.

Interior Design: Axis Mundi Design LLC, New York; Designers: John Beckmann with Nick Messerlian, Architect: NemaWorkshop





The Robbins & Appleton Building is a historic building located at 1-5 Bond Street in New York. Built in 1871, the building was used to manufacture watch cases. It was designed by architect Stephen Decatur Hatch in the Second Empire style. The building features an ornate cast iron facade and stunning blue mansard roof.

Our client (the director of a global hedge fund) bought the apartment and asked us to design a luxury minimalist backdrop with a neutral palette for his growing collection of young emerging artists including Aaron Curry, Adam McEwen, Jonas Wood, Hugh Scott Douglas Adam Pendleton, Eddie Martinez and Sam Moyer. His girlfriend, Karine Haimo is a director at the Metro Pictures, she helped him curate the collection. They found our firm and work on the Internet.

Our main design challenge was to give the voluminous apartment a nice scale, and to create a variety of seating options, for entertaining. A muted color palette was suggested by the client at an early stage in the design development process. So we selected warm greys, taupe and greige tones for much of the furniture. There are pops of color in the clean-lined contemporary furnishings from B&B Italia, Flexform, Poltrona Frau and other companies. The design is

deliberately understated so that the art becomes the primary focus. All of the furniture and objects are new, the clients brought nothing with them. Included in the scheme are a concrete feature wall and soft grey wide plank floors with hot-rolled steel detailing, the columns are the existing cast-iron columns, all lending a nice materiality to the space.

There are lot of built-ins, including a rolling library ladder and LCD TV screens. The loft has a Crestron home automation system, and each room has iPod docks built into the walls. There is even a shoe closet. The west side of the apartment looks out over landmarked Shinbone Alley, which inspired a Broadway musical and, fittingly, a song by the Spin Doctors.

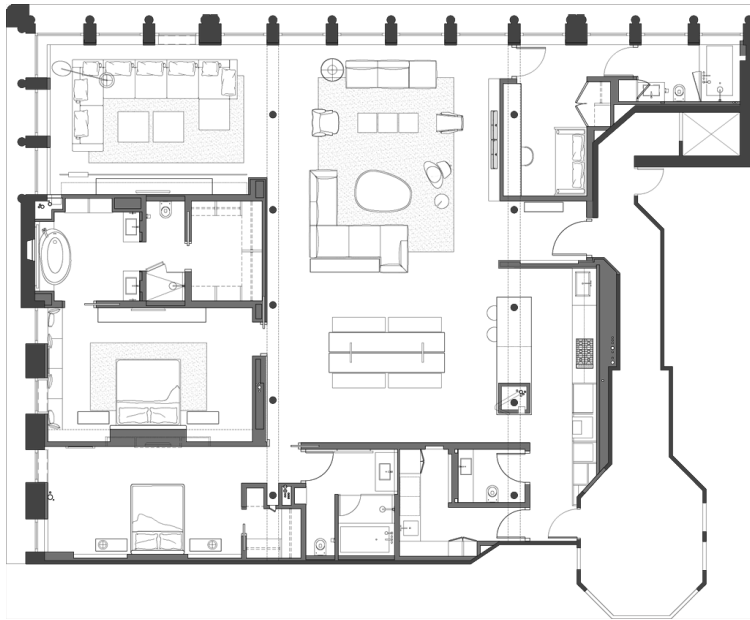
What makes the project successful - is that it's contemporary without being cold, and glamorous without being overly decorated. I always say that were only as good as our client, and for this project we had a very good one.

*Interior Design: Axis Mundi Design LLC, New York;
Designers: John Beckmann with Nick Messerlian, Architect;
NemaWorkshop*

CLOCKWISE FROM LEFT: In the bathroom the antique oak-rimmed bath is made of galvanised iron with a large framed animal print hanging above never used but simply there as a piece of art. Smothered in a mature wisteria the pergola provides a long covered walkway by the side of the house. The studio is tucked away at the end of a long pergola in the garden. The kitchen island is a large marble-topped antique Am sinctecatur re sim rem estrume venectemo eaque que consed moluptatior assinvel ium solor saped mil id quia voluptio odis ea volese







The Robbins & Appleton Building is a historic building located at 1-5 Bond Street in New York. Built in 1871, the building was used to manufacture watch cases. It was designed by architect Stephen Decatur Hatch in the Second Empire style. The building features an ornate cast iron facade and stunning blue mansard roof. Our client (the director of a global hedge fund) bought the apartment and asked us to design a luxury minimalist backdrop with a neutral palette for his growing collection of young emerging artists including Aaron Curry, Adam McEwen, Jonas Wood, Hugh Scott Douglas, Adam Pendleton, Eddie Martinez and Sam Moyer. His girlfriend, Karine Haimo is a director at the Metro Pictures, she helped him curate the collection. They found our firm and work on the Internet. Our main design challenge was to give the voluminous apartment a nice scale, and to create a variety of seating options, for entertaining. A muted color palette was suggested by the client at an early stage in the design development process. So we selected warm greys, taupe and greige tones for much of the furniture. There are pops of color in the clean-lined contemporary

furnishings from B&B Italia, Flexform, Poltrona Frau and other companies. The design is deliberately understated so that the art becomes the primary focus. All of the furniture and objects are new, the clients brought nothing with them. Included in the scheme are a concrete feature wall and soft grey wide plank floors with hot-rolled steel detailing, the columns are the existing cast-iron columns, all lending a nice materiality to the space. There are a lot of built-ins, including a rolling library ladder and LCD TV screens. The loft has a Crestron home automation system, and each room has iPod docks built into the walls. There is even a shoe closet. The west side of the apartment looks out over landmarked Shinbone Alley, which inspired a Broadway musical and, fittingly, a song by the Spin Doctors. What makes the project successful - is that it's contemporary without being cold, and glamorous without being overly decorated. I always say that were only as good as our client, and for this project we had a very good one.

Interior Design: Axis Mundi Design LLC, New York; Designers: John Beckmann with Nick Messerlian, Architect: NemaWorkshop

