



Tucker County, WV

Community Profile

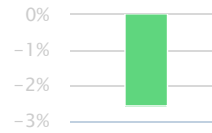
TOTAL POPULATION

6,958

The total population of the County of Tucker County is 6,958. The median age is 47.07.



The population in Tucker County has decreased -2.56% since 2012.



Age Distribution



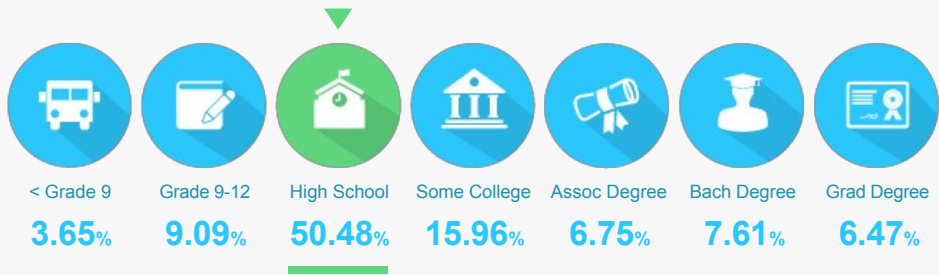
50.45%
Male

49.55%
Female

47.07
Median Age

EDUCATIONAL ATTAINMENT

The majority of the population in Tucker County has completed at least a high school degree.



20.83%
of the population
has a college degree.



offer Associate's Degree
or Certificate

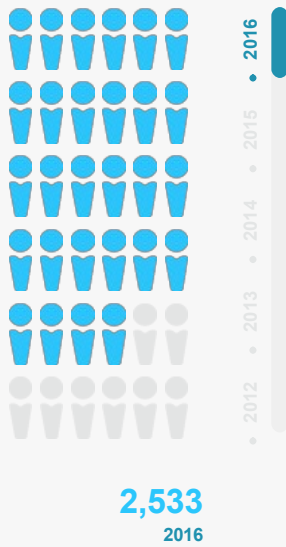


offer Bachelor's Degree
or Higher

LABOR FORCE 3,220

Tucker County has a labor force of 3,220 people, with a job growth rate of -1.05% since 2015, and an unemployment rate of 6.3%.

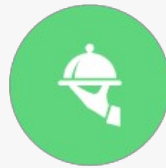
TOTAL EMPLOYEES



5 TOP TALENT

Where are the top jobs by occupation?

Food Preparation/Serving



19.19%

486

Sales



11.88%

301

Construction and Extraction



5.29%

134

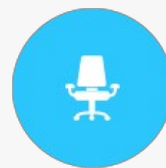
Office and Administrative support



13.54%

343

Executive, Managers, and Administrators



7.19%

182

The work distribution of total employees in Tucker County is.



48%

Blue Collar



51%

White Collar

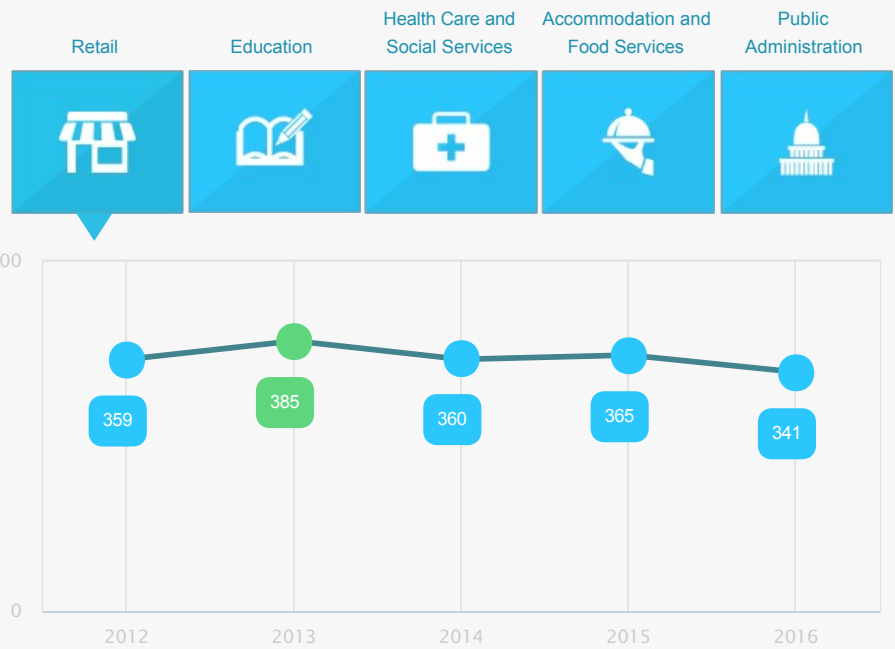
TOTAL ESTABLISHMENTS 247

BUSINESSES AND JOBS

Tucker County has a total of 247 businesses. In 2016, the leading industries were:

Retail, Education, Health Care and Social Services, Accommodation and Food Services, and Public Administration

Which are the top 5 industries by jobs?



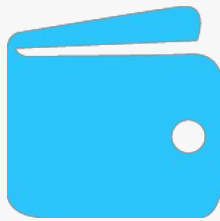
How many employees do businesses in Tucker County have?

1-4 Employees	64.37%
5-9 Employees	17%
10-19 Employees	9.72%
20-49 Employees	6.07%
50-99 Employees	1.21%
100+ Employees	1.62%

INCOME AND SPENDING

Workers in Tucker County earn a median yearly household income of \$39,144. 29.43% of the households earn more than the national average each year. Household expenditures average \$43,952 per year. The majority of earnings get spent on Shelter, Transportation, Food and Beverages, Health Care, and Utilities.

There are 297% more households who own their homes than there are renters.



MEDIAN

**HOUSEHOLD
INCOME**
\$39,144

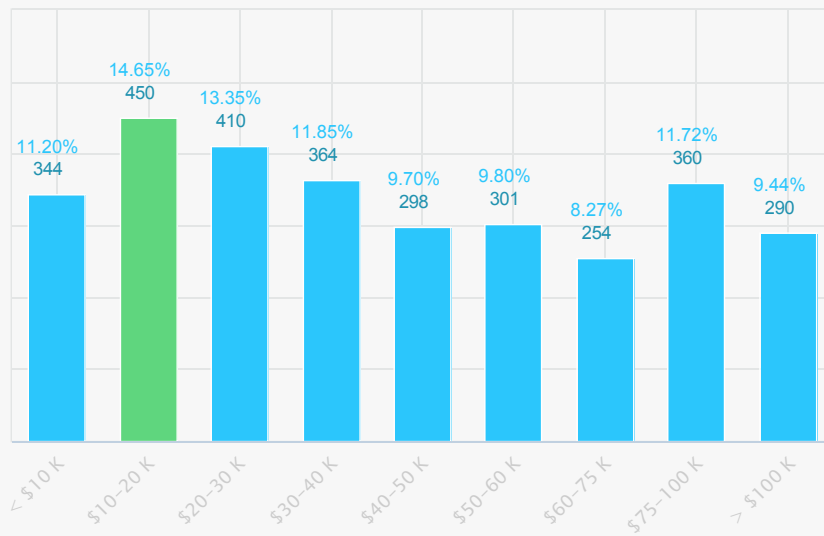
8%

less than the
state

30%

less than the
nation

Income Distribution



How do people spend much of their money?

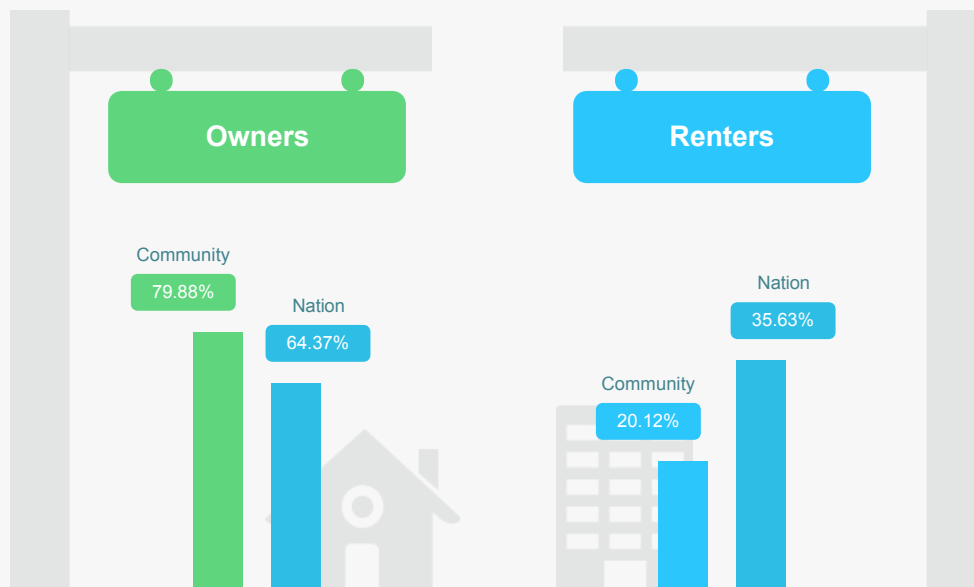
\$ PER HOUSEHOLD



The average household expenditure in Tucker County is:

\$43,952

HOUSING



TRANSPORTATION

Residents spend an average of 28 minutes commuting to work. Tucker County is served by 18 airports within 50 miles. Rail can be accessed within the community. Interstates can be accessed 22 miles away.



